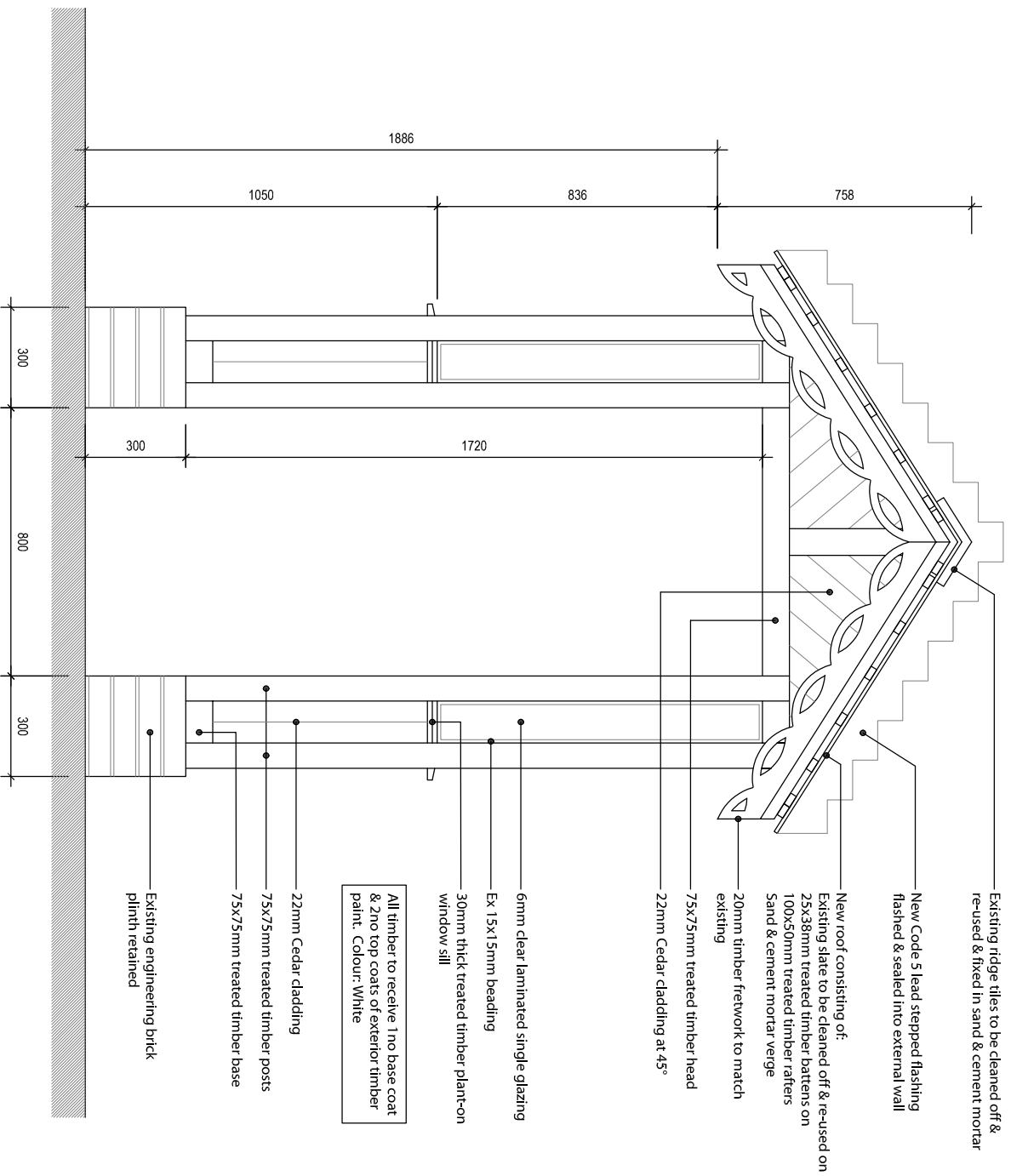


Any discrepancies should be reported immediately.

Any surveyed information incorporated within this drawing cannot be guaranteed as accurate unless confirmed by a fixed dimension. All dimensions are in millimetres unless noted otherwise.

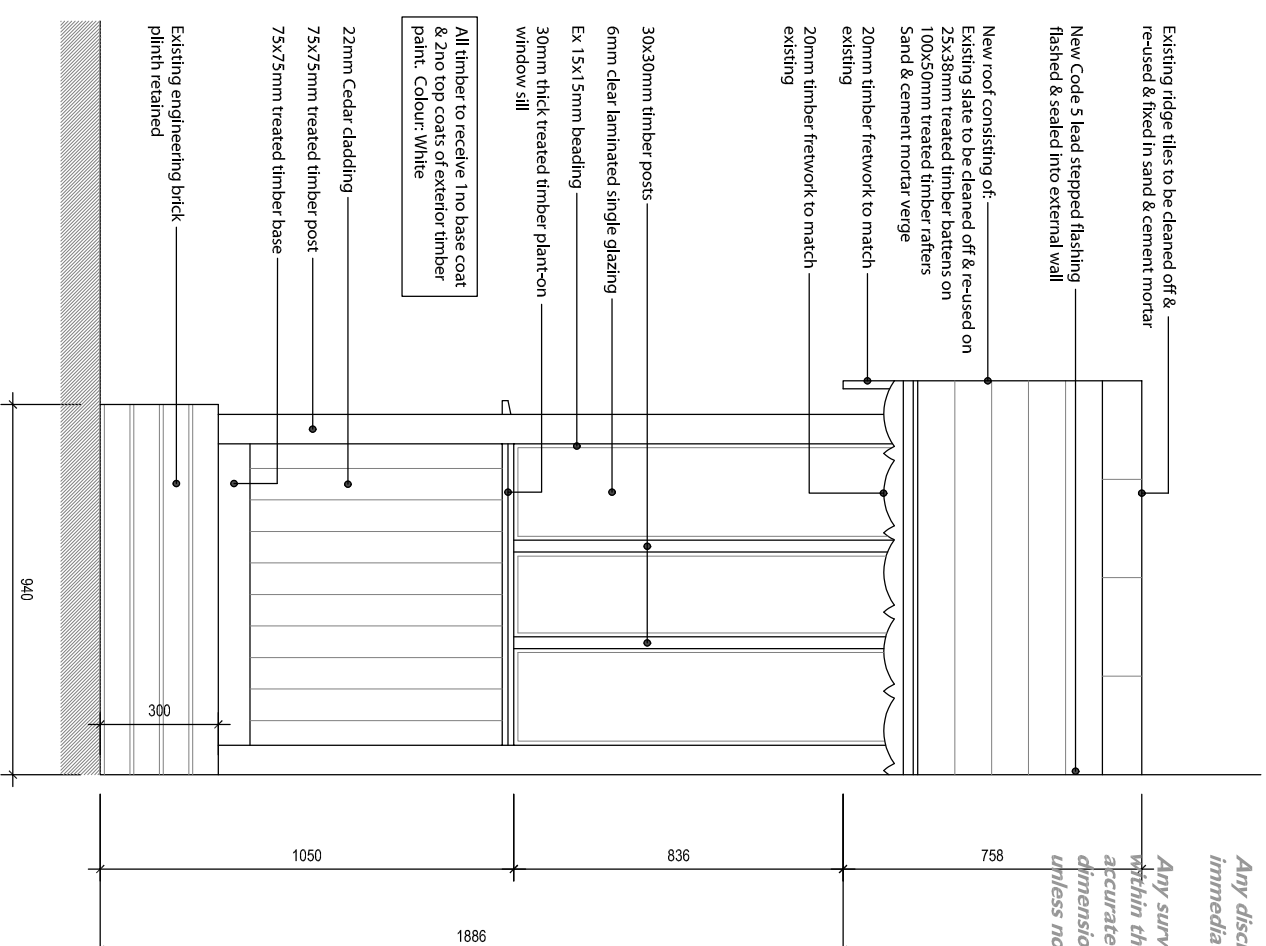


All timber to receive 1 no base coat & 2 no top coats of exterior timber paint. Colour: White

Existing engineering brick plinth retained

All timber to receive 1 no base coat & 2 no top coats of exterior timber paint. Colour: White

30x30mm timber posts
6mm clear laminated single glazing
Ex 15x15mm beading
30mm thick treated timber plant-on window sill
Existing engineering brick plinth retained
75x75mm treated timber posts



All timber to receive 1 no base coat & 2 no top coats of exterior timber paint. Colour: White

Existing engineering brick plinth retained

Project :- Proposed Extension & Alterations to Cwm Gwyn, Llanbrynmair, Powys, SY19 7DY	
Drawing Status :- Stage 3a: Planning	Drawing Title :- Proposed Details Sheet 2
Scale :- 1:20@A3	Date :- 03.08.21
Drawn by :- NB	Checked :- DH
Drawing No :- U064.3a.3.201	Rev :-