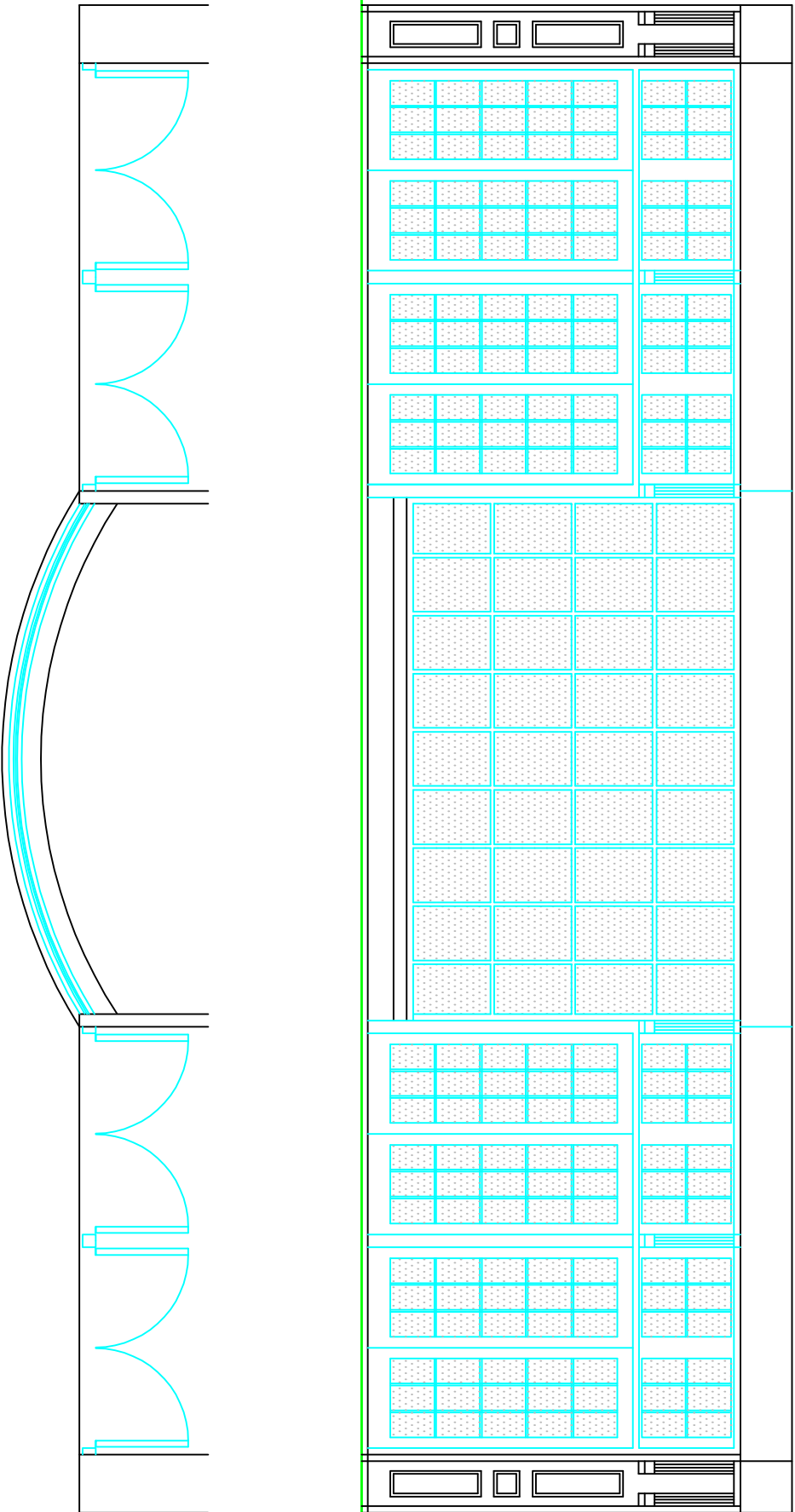


Hollingworth Dean-Walker Associates Ltd

2 Crownhill Meadow, Catshill, Bromsgrove, Worcestershire, B61 9HH

Tel: 07808471940

Email: NHHollingworth@aol.com



'Sherlock's', 23 Queen Street, Blackpool, FY1 1NL - Replacement & Remodelling Of Existing Shop Front
Existing Part Elevation - Ground Floor to Queen Street 1:50@A4 September 2021 21:78:02