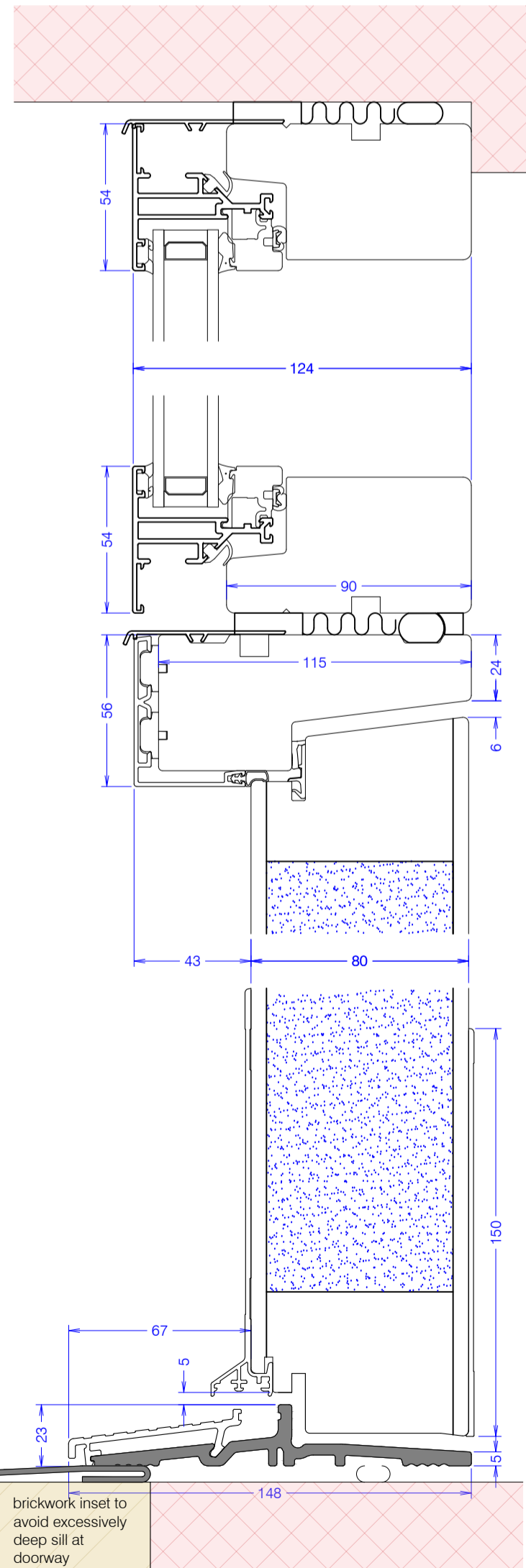
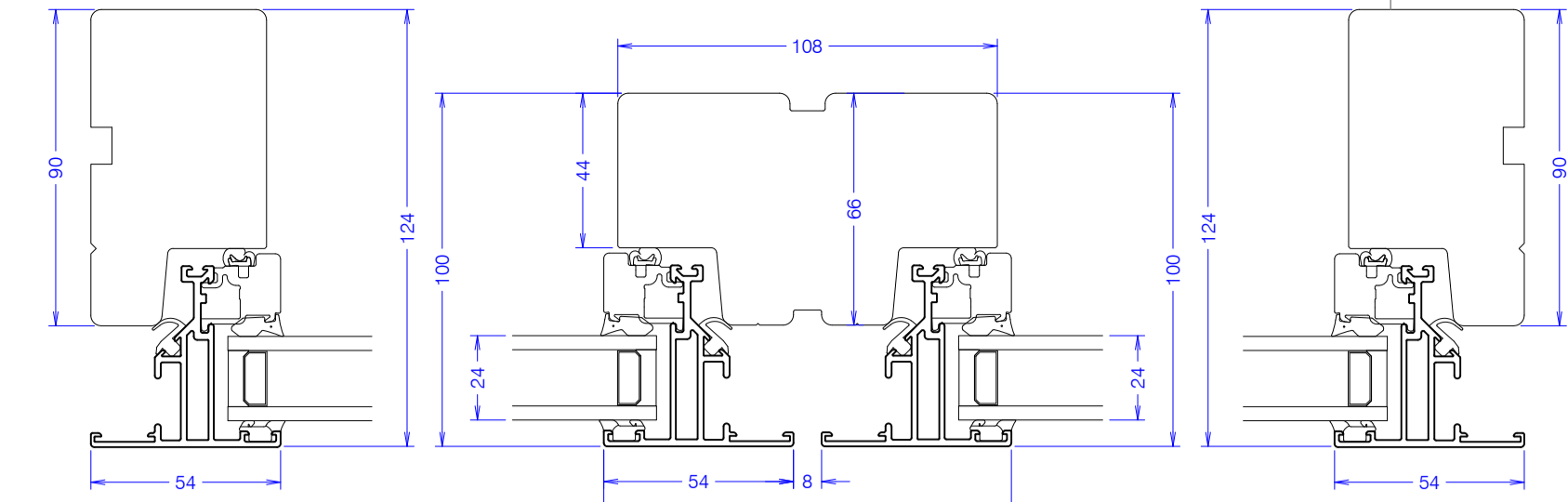


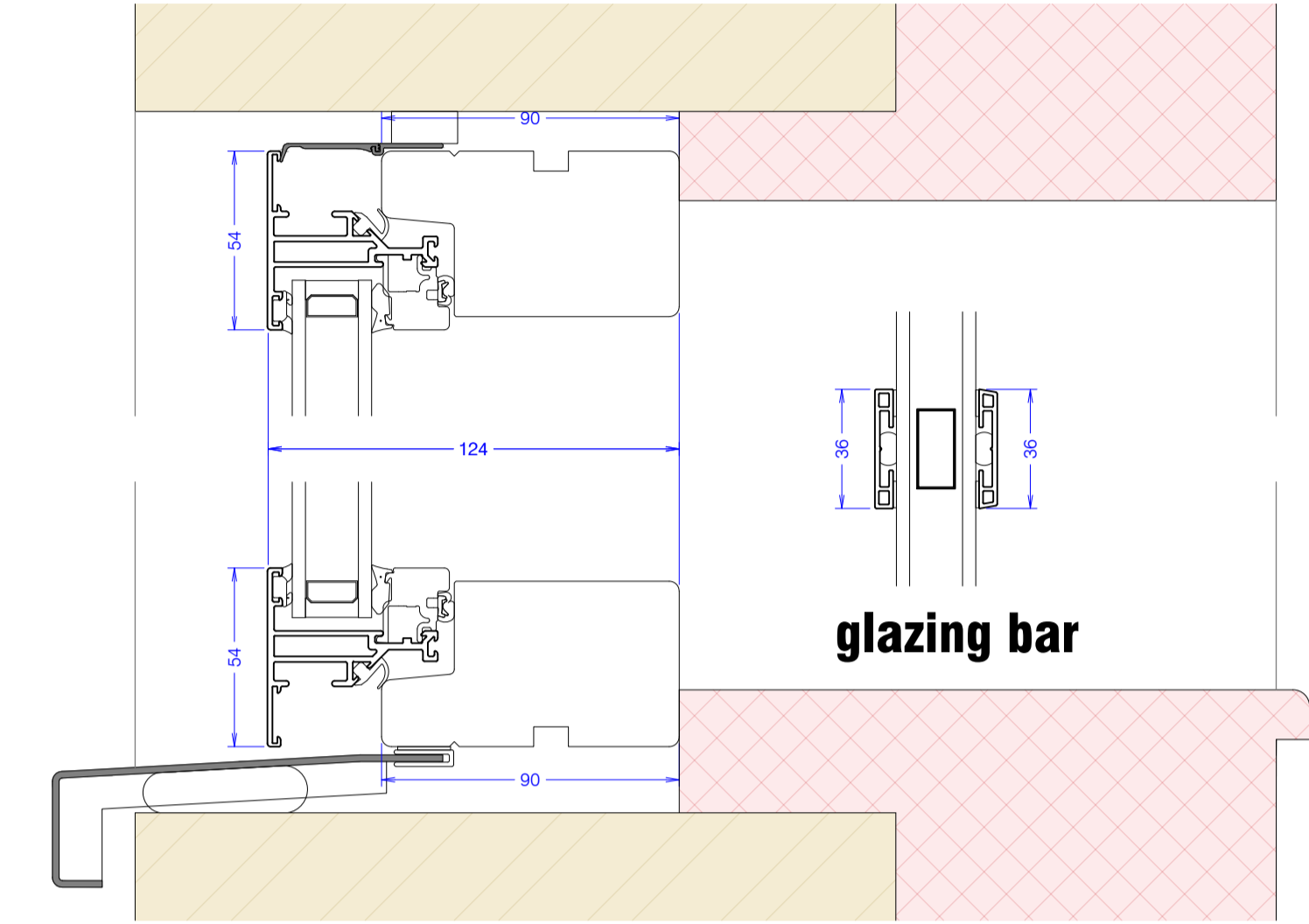
**vertical section
BARN DOOR TOPLIGHT WINDOWS**
1:2



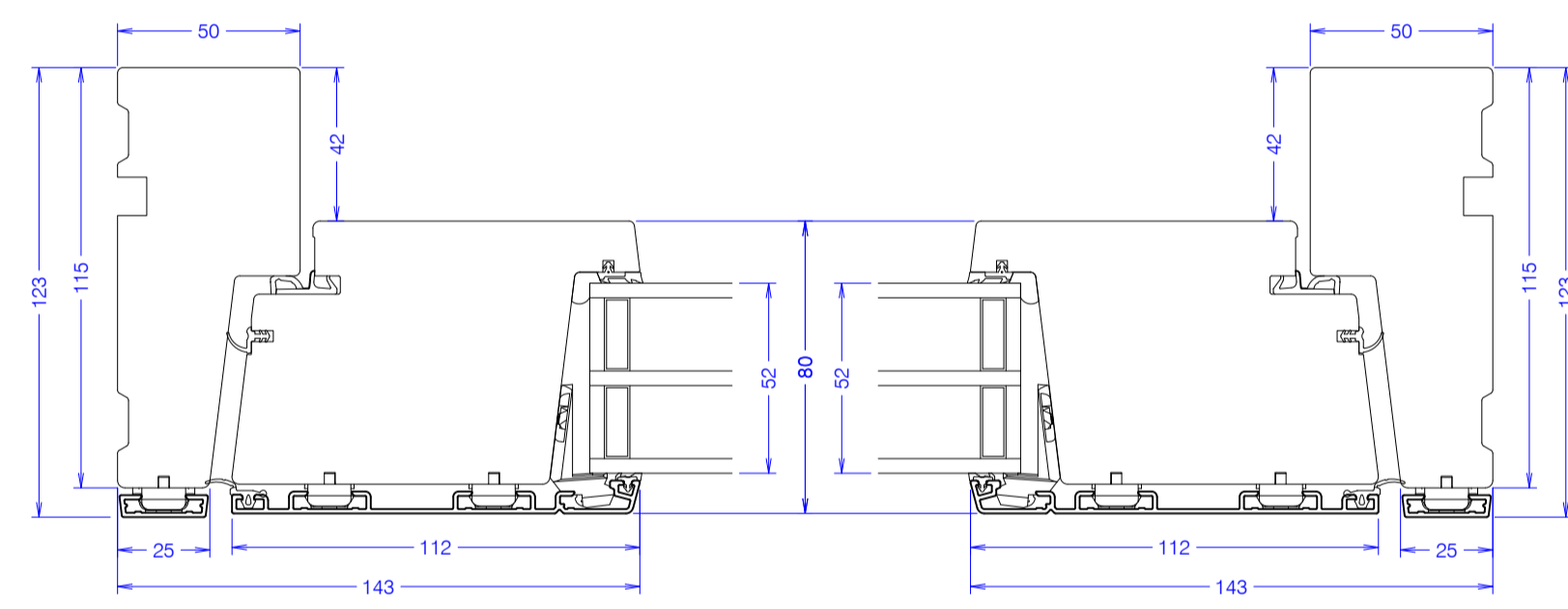
**vertical section
ENTRANCE SCREEN**
1:2



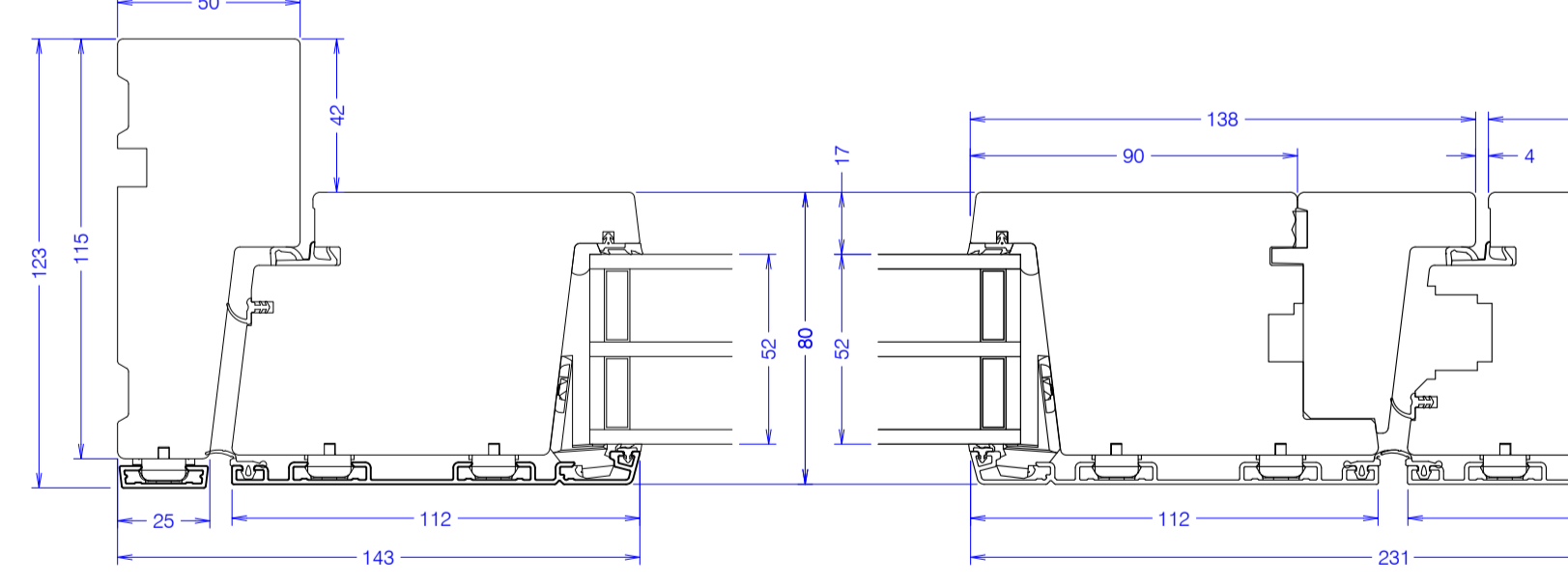
**horizontal section
TOPLIGHTS & SOUTH EAST GABLE WINDOW**
1:2



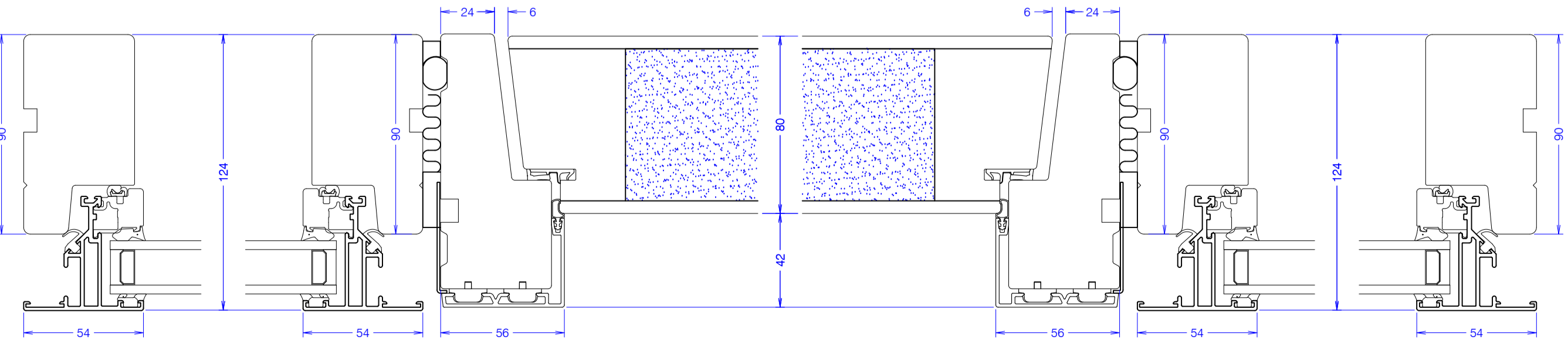
**vertical section
CASEMENT WINDOWS**
1:2



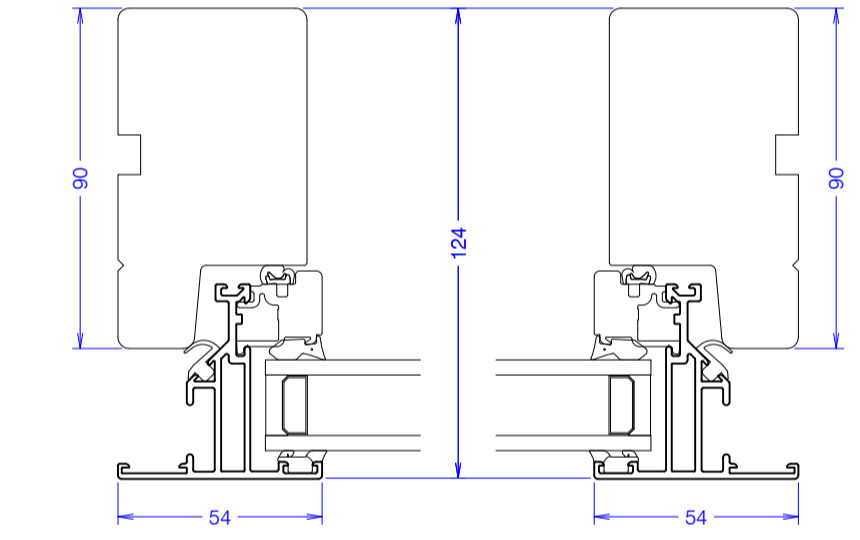
**horizontal section
REAR DOOR**
1:2



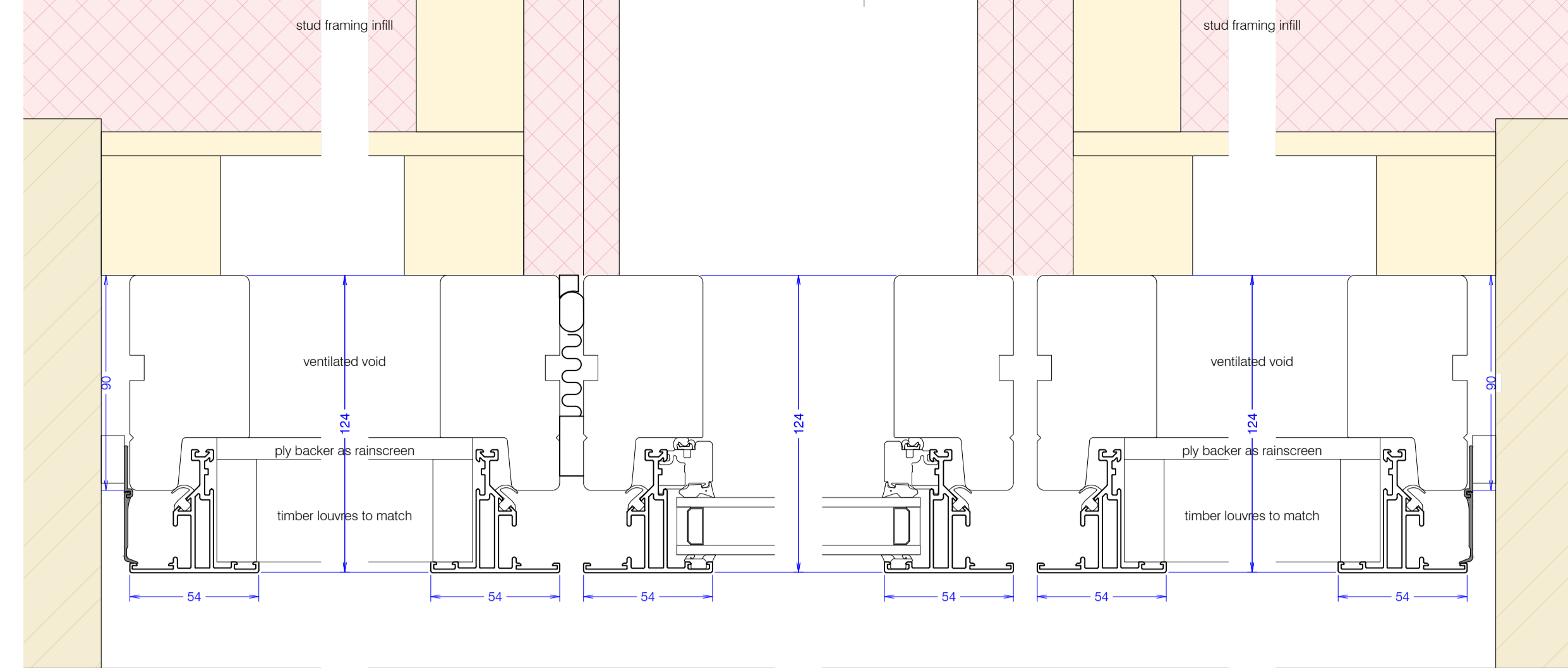
**horizontal section
REAR FRENCH DOOR**
1:2



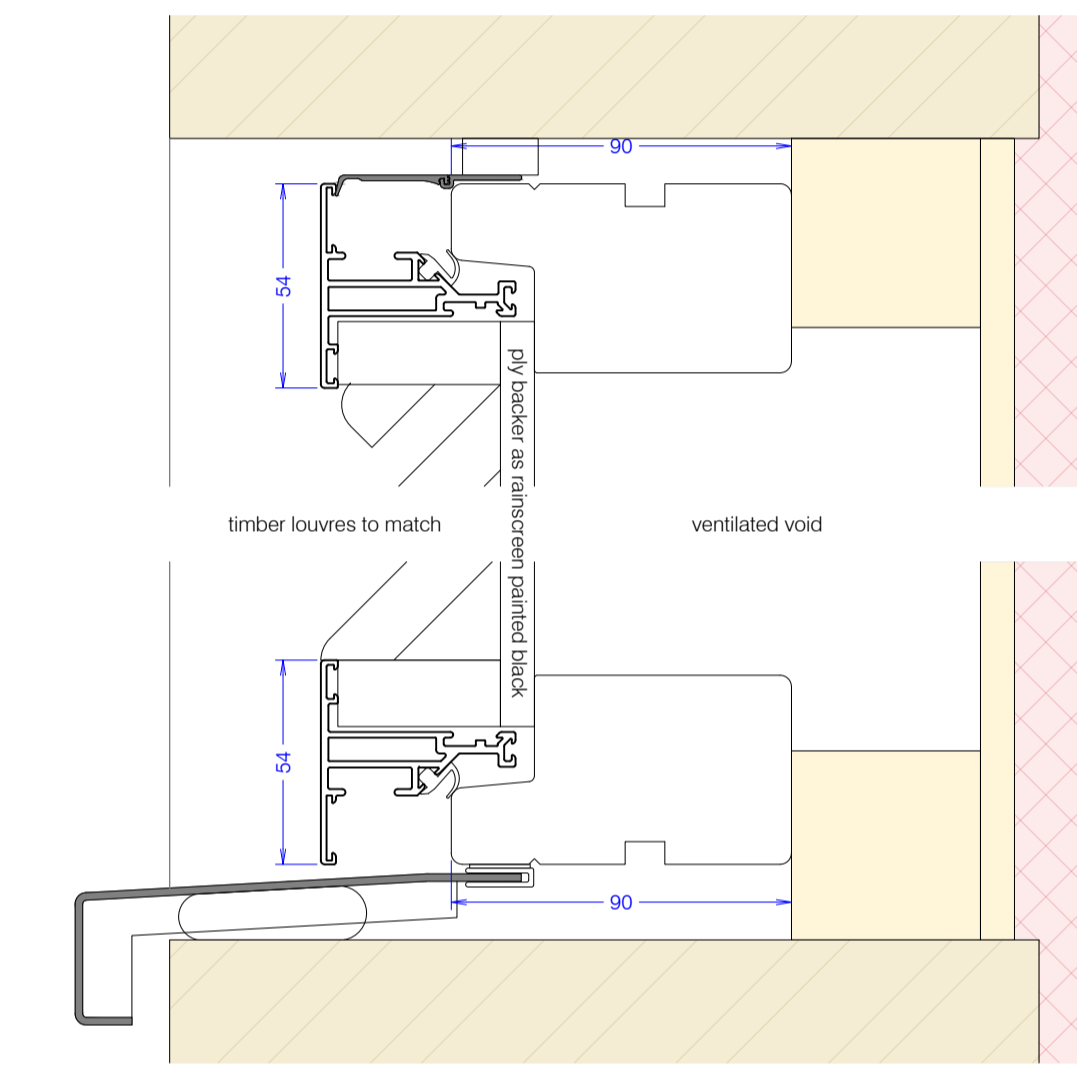
**horizontal section
ENTRANCE SCREEN**
1:2



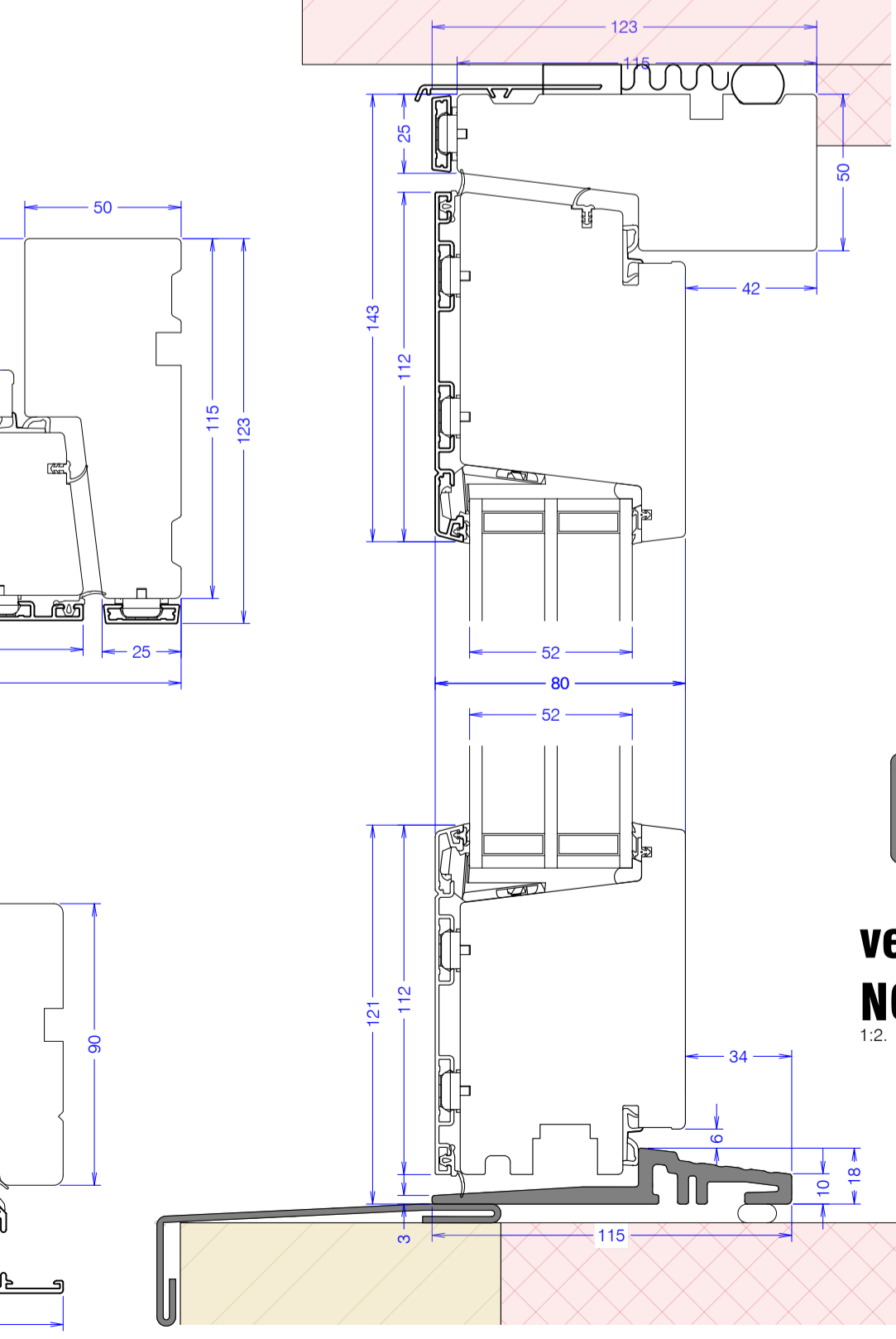
**horizontal section
SINGLE CASEMENT WINDOWS**
1:2



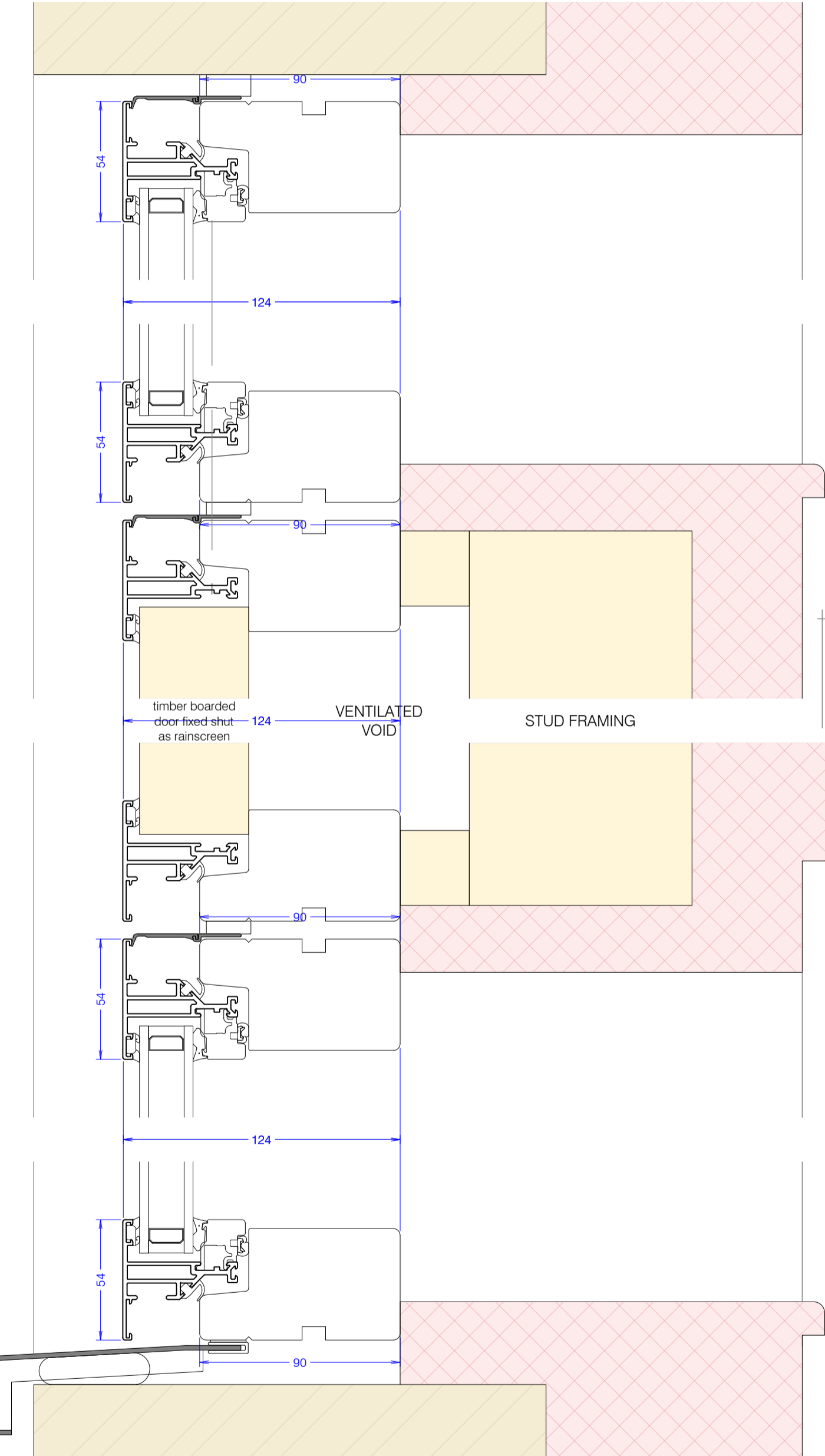
**horizontal section
NORTHWEST GABLE LOUVRES**
1:2



**vertical section
NORTHWEST GABLE LOUVRES**
1:2



**vertical section
REAR DOORS**
1:2



**vertical section
NORTHWEST GABLE ASSEMBLY**
1:2

UNLESS STATED OTHERWISE ALL DOORS & WINDOWS ARE TO BE FROM THE VELFAC FLUSH ALUMINIUM/TIMBER RANGE. SEE DRAWING 776-1a-005A FOR 1:10 ELEVATIONS.

ON THESE SECTIONS EXTERIOR IS LEFT/DOWN AND INTERIOR IS RIGHT/UP.