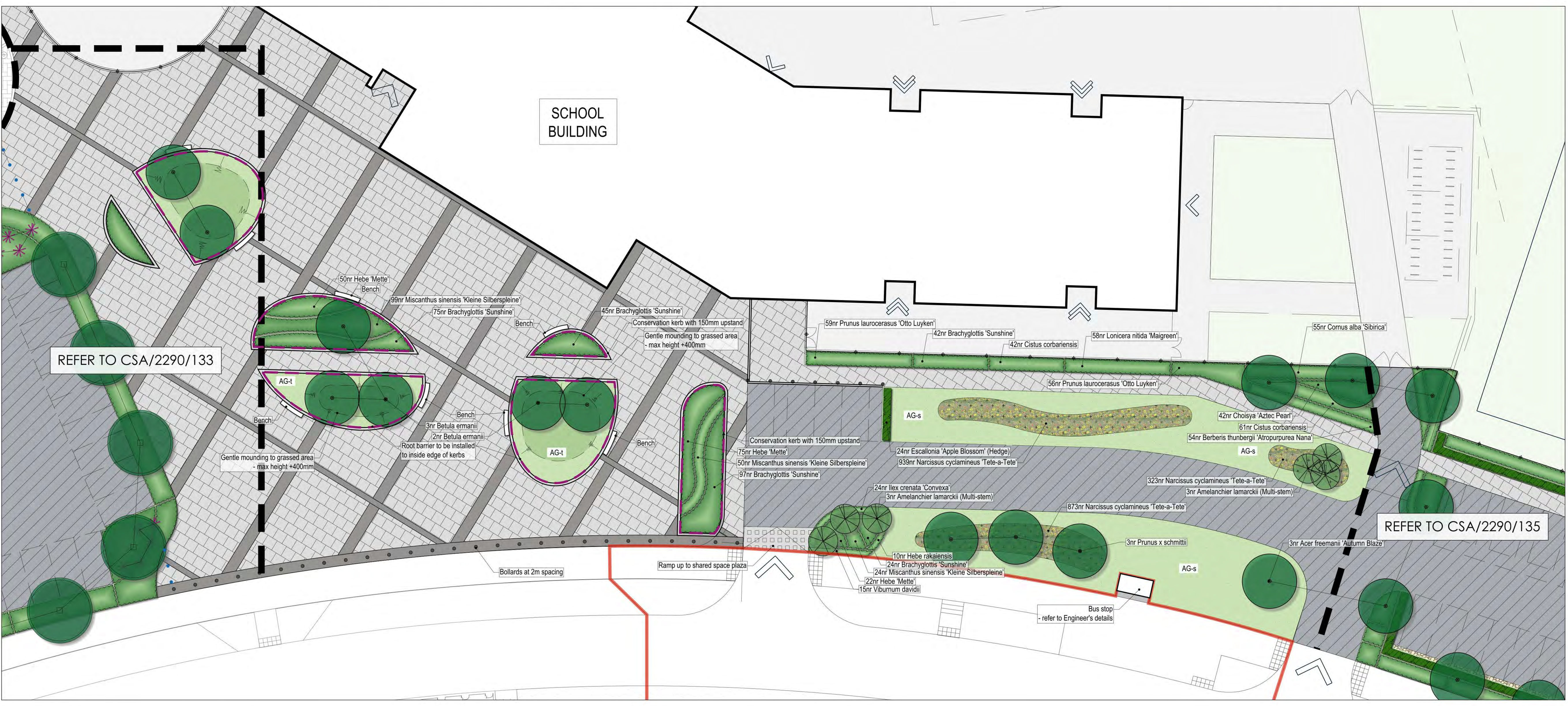


**Notes**

- Refer to CSA/2290/135 for Planting Specification and Plant Schedule;
- Refer to CSA/2290/136-137 for Play Area Proposals;
- Refer to CSA/2290/145 for Landscape Masterplan;
- Refer to Architec's drawings for boundary treatment details

**LEGEND**

	<b>APPLICATION BOUNDARY</b>
	<b>EXISTING TREES / VEGETATION</b>
	<b>Softworks</b>
	<b>SEMI-MATURE TREE</b>
	<b>EXTRA HEAVY STANDARD TREE</b>
	<b>STANDARD TREE</b>
	<b>MULTI-STEM TREE</b>
	<b>NATIVE HEDGE PLANTING</b>
	<b>ORNAMENTAL HEDGE PLANTING</b>
	<b>ORNAMENTAL SHRUB / HERBACEOUS / GRASS PLANTING</b>
	<b>SPECIMEN SHRUB PLANTING</b>
	<b>CLIMBING SHRUB PLANTING</b>
	<b>AMENITY GRASS SEEDING - 'A22 (Low Maintenance)' seed mix by Germinal Seeds Ltd or equal and approved. 50g / m<sup>2</sup>, overseed rate, 20g / m<sup>2</sup>.</b>
	<b>AMENITY GRASS TURF - 'Medallion' turf by Rolawn or equal and approved.</b>
	<b>BULB PLANTING</b>
	<b>LINEAR RIBBED ROOT BARRIER - soft landscaped area to be lined with linear ribbed root barrier as shown on plan, in order to protect paving from tree roots, type ReRoot by GreenBlue Urban Ltd. or equal and approved. Refer to Planting Specification on plan CSA/2290/135 for specification.</b>
	<b>Hardworks</b>
	<b>BITUMINOUS MACADAM SURFACE - to footpath to Engineer's specification.</b>
	<b>BITUMINOUS MACADAM SURFACE - to vehicular areas to engineers details.</b>
	<b>CONCRETE FLAG PAVING - to plaza 'Saron' concrete flag paving by Marshalls Ltd. 600x600x50mm, Natural colour, textured finish, staggered bond laying pattern.</b>
	<b>CONCRETE BLOCK PAVING - to plaza 'KeyBlock Pencil Edge' concrete block paving by Marshalls Ltd. 200x100x80mm, Charcoal colour, stretcher course laying pattern.</b>
	<b>FLAG PAVING - area adjacent to Formal Pond 'Conservation Textures' flag paving by Marshalls Ltd. 450x450x50mm, Silver Grey colour laid stack bond pattern.</b>
	<b>CONCRETE SETT PAVING - ramps 'Conservation' concrete block paving by Marshalls Ltd. 100x100x100mm, laid stack bond, textured finish, silver grey colour. NB: Kerb to be 'Conservation' kerb (250mm x 145mm) by Marshalls Ltd. silver grey colour; laid flush either side of rumble strip.</b>
	<b>GRAVEL - pea shingle laid to a depth of 100mm over non-biodegradable geotextile membrane. Finished level to be 20mm below adjacent ground level.</b>
	<b>CONSERVATION KERB - to edge of oval grassed areas, laid with 150mm up-stand, supplied by Marshalls Ltd. 145x25mm, Silver Grey - laid flush to demark transition between surfaces, supplied by Marshalls Ltd. 145x25mm, silver grey.</b>
	<b>Street Furniture</b>
	<b>CONCRETE BENCH - 'Orwell' backless concrete bench by Bailey Streetscene Ltd. L: 2428mm x D:400mm x H:450mm, Light Grey colour, Dressed finish; or equal and approved.</b>
	<b>STAINLESS STEEL BOLLARD - Mild steel stainless steel bollard by Bailey Streetscene Ltd. 1200mm high x 101mm dia. fixed 900mm above ground, or equal and approved.</b>
	<b>PAVING STUDS - to delineate school boundary Stainless steel, 90mm diameter, set flush with paved surface.</b>
	<b>CYCLE STAND - type Sheffield available from Broxap or equal and approved.</b>



**Notes:**

- All surface materials are to be installed as specified or equal or approved specification to be agreed with Landscape Architect.
- All kerbs to bituminous macadam areas to be British Standard concrete kerb (by Marshalls or equal and approved) with upstand to footways to engineers specification (nominally 100mm) or laid flush where different paving types meet (eg. driveways).
- All block paved areas to receive 'Conservation' kerbs by Marshalls or equal and approved, upstand to engineers details (nominally 20-50mm upstand).
- All block paved parking bays to be demarked using 'T' marker blocks in white colour, 200 x 100 x 80mm.
- All parking bays in macadam areas to be demarked by thermoplastic white lining paint.
- Refer to Site Plan by Architect for School and Community Centre boundary treatment details.

D	08.09.21	AM	Plaza design revised re: Client Comms.
C	15.03.20	AM	MUGA moved north to suit LPA Comms.
B	17.04.20	AM	Redline Boundary updated
A	01.04.20	SW	Hedge species changed to address Landscape Consultee's comments

Rev Date By Description

Drawing Status

**FOR PLANNING**

**CSA**  
environmental

Dixies Barns, High Street,  
Ashwell, Hertfordshire SG7 5NT

01462 743647  
ashwell@csaenvironmental.co.uk  
csaenvironmental.co.uk

Project North Wellingborough

Title School and Community Centre  
Landscape Proposals  
Sheet 2 of 3

Client Northants LLP

Scale 1:200 @ A1 Drawn SW

Date January 2020 Checked GC

Drawing No. CSA/2290/134 Rev D