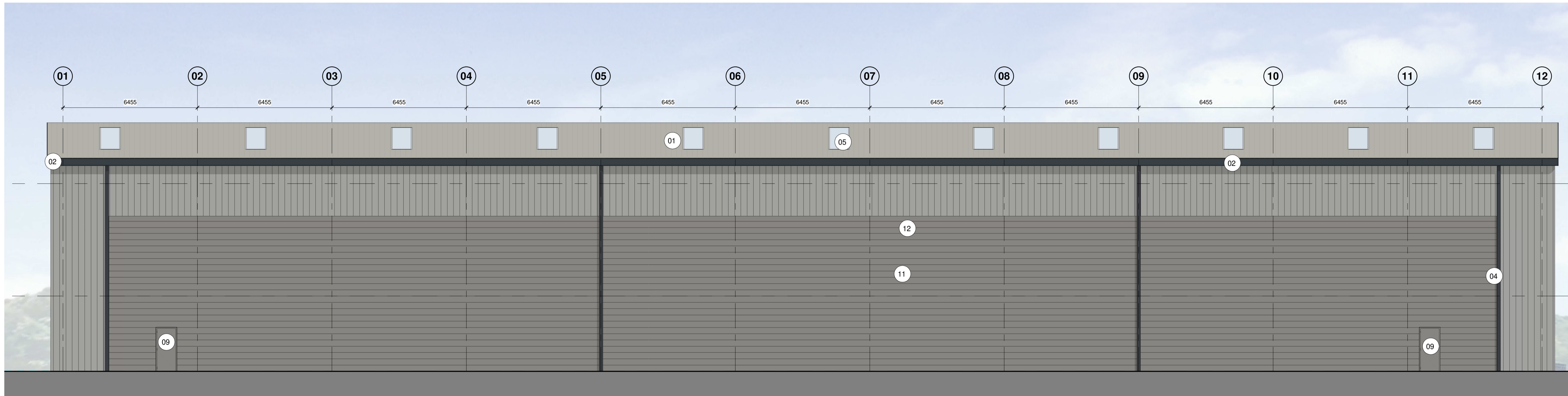
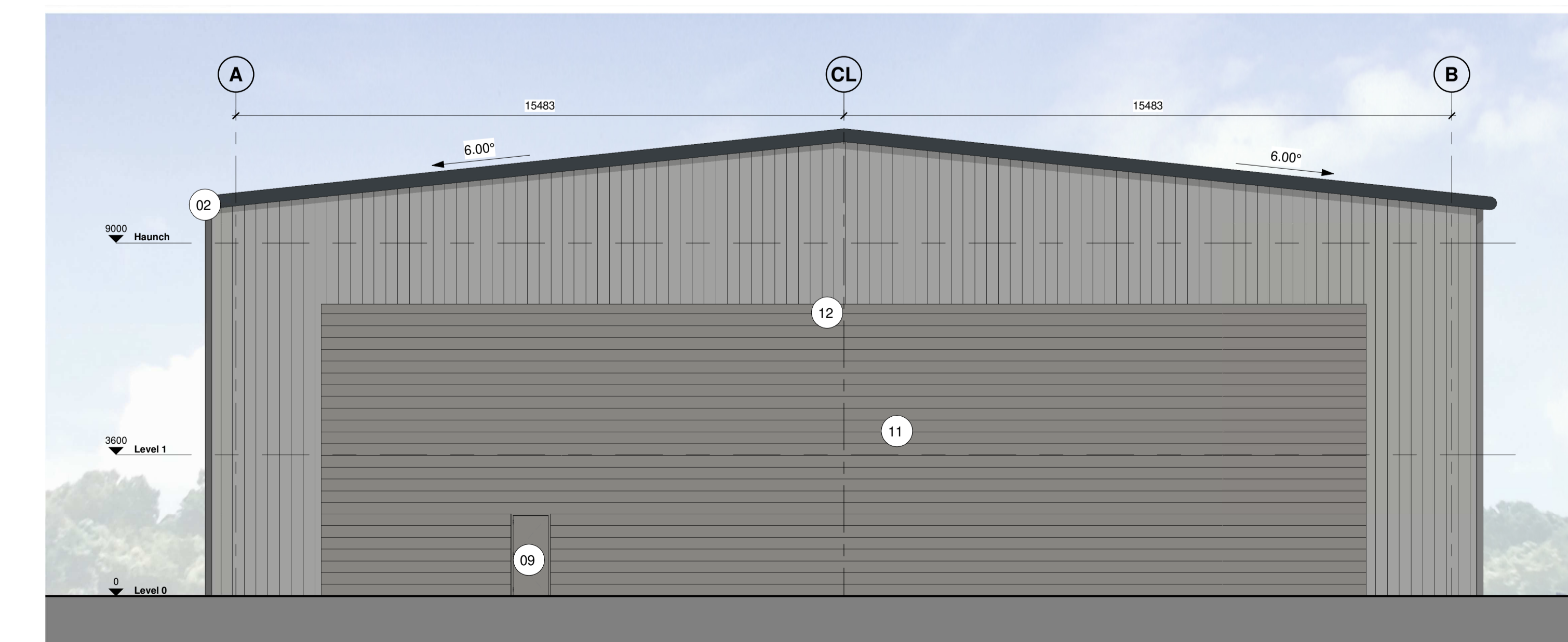


Hazard Identification		
ref	hazard	date



2 21-ZZ\_Unit 01 Elevation D  
1:100



1 21-ZZ\_Unit 01 Elevation C  
1:100

Material Key	
Number	Material
01	Insulated sectional overhead industrial doors in White Aluminium RAL 9006
02	Feature entrance Glazed Canopy
04	Bullnose Eaves, Gutters & RWP's in Anthracite Grey (RAL 7016).
05	Integrated Kingspan KS1000 DLTR Lay-Lite Trapezoidal rooflights (or similar approved).
06	Double glazed aluminium framed curtain walling system, with double doors in Anthracite Grey (RAL 7016).
07	Glazed spandrel panel to floor junctions in White Aluminium RAL 9006.
09	External steel fire escape doors in Grey Aluminium RAL 9007(external) Pure white RAL 9010 (internal).
10	External steel fire escape doors in White Aluminium RAL 9006 (external) Pure white RAL 9010 (internal).
11	Horizontal KS1000 Microrib built up wall cladding system external capping sheet in Anthracite Grey (RAL 7016).
12	Vertical Trapezoidal 32/1000 profile built up wall cladding system external capping sheet in White Aluminium (RAL 9006).
13	Norclad Timber cladding system, European Redwood
14	Integrated Norclad Timber cladding louvre system, European Redwood
15	Unit Signage, Aluminium signage fixed back to anthracite cladding behind. Signage by occupier.

P1 First Issue of Drawing	BE 07.07.21	DC
Rev	Revision Details	Drawn   Date   Checked

**C4 Projects**

Quayside,  
Widnespool Business Park,  
Stockton Heath,  
WAA GH,  
t: 01925 751 852  
e: info@c4projects.co.uk  
www.c4projects.co.uk

Project Management • Architecture • Building Surveying • Cost Consultancy

Client  
**Redsun Projects**

Project  
**Croft Retail Park  
Bromborough**

Drawing Title  
**Unit 01  
Elevations (C&D)**

Status Purpose of Issue  
**S2 SUITABLE FOR INFORMATION**

Drawn by BE Created 04.12.20

C4 Job no.	19053	Scale	As indicated @ A1
Dwg no.	19053-C4P-B17-ZZ-DR-A-2101	Rev	P1