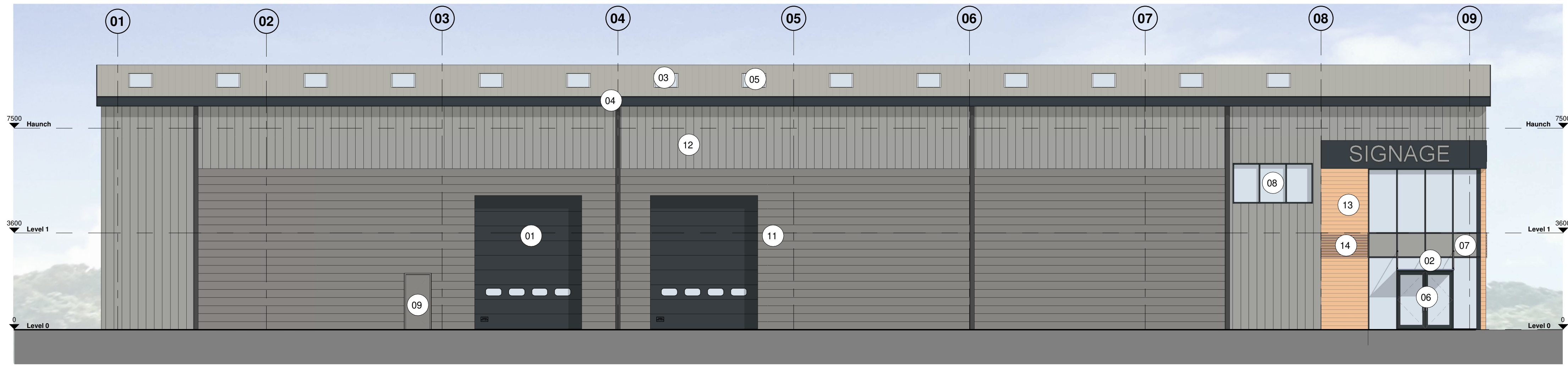
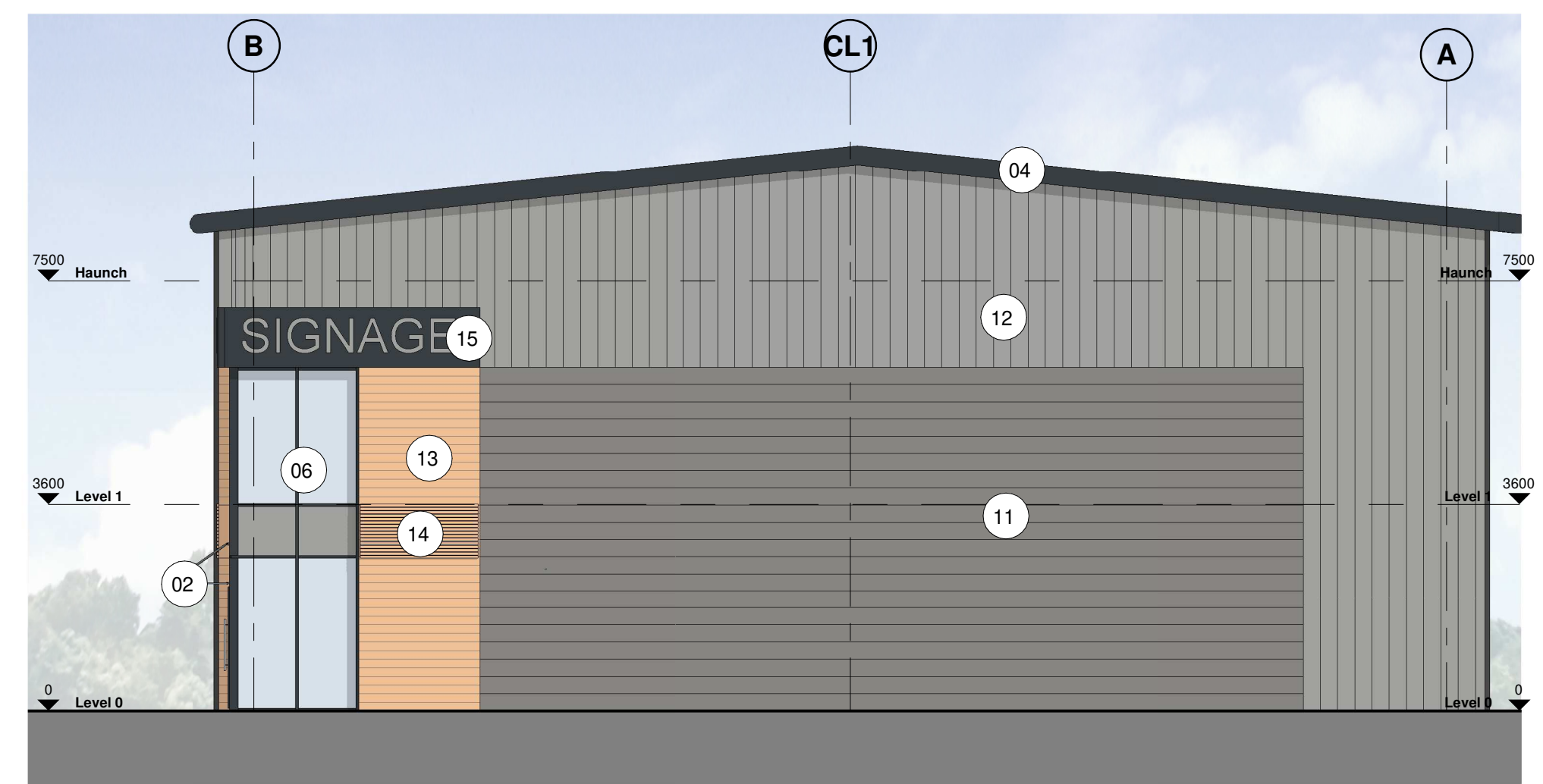


Hazard Identification		
ref	hazard	date

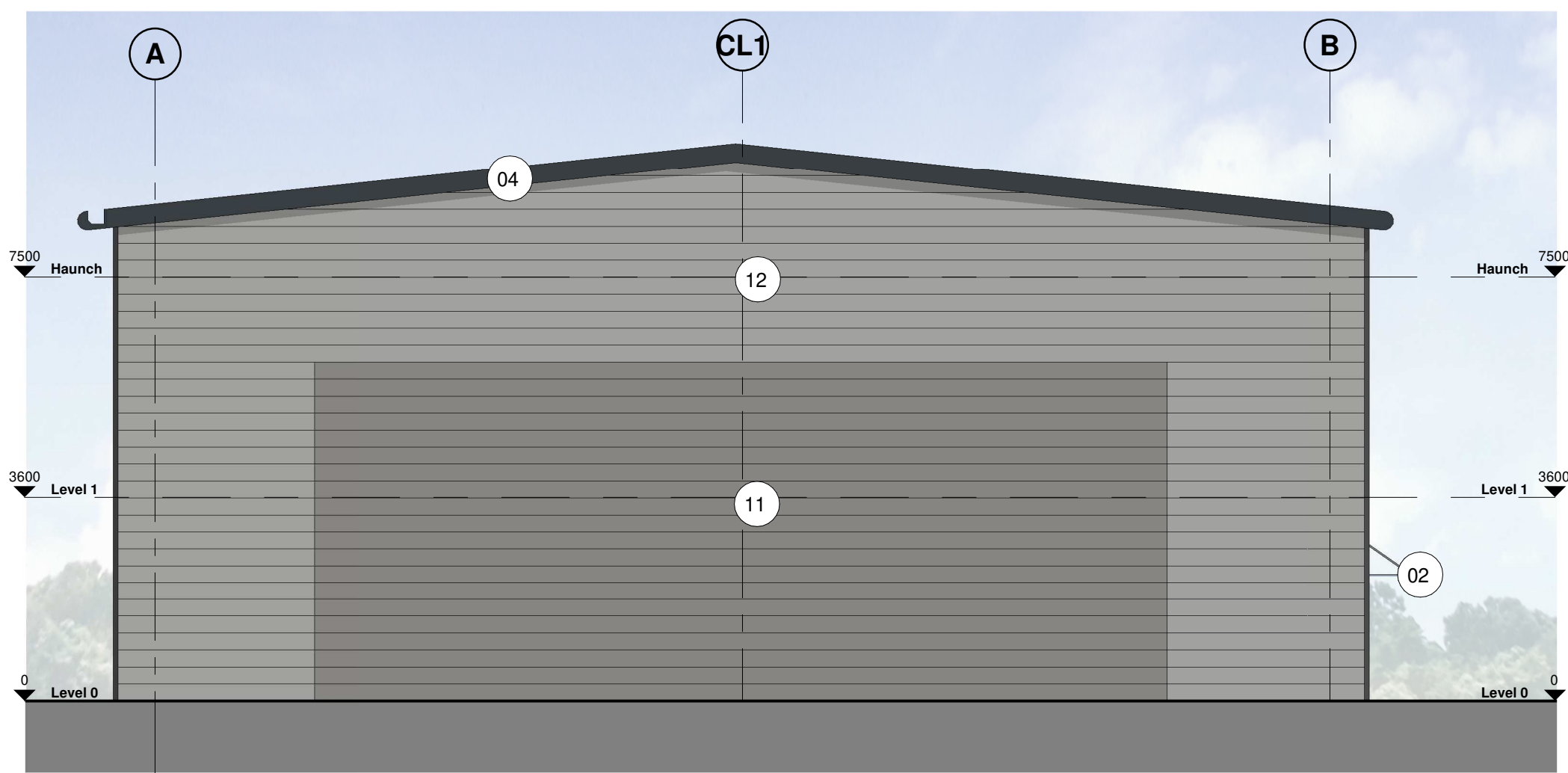
Material Key	
Number	Material
01	Insulated sectional overhead industrial doors in White Aluminium RAL 9006
02	Feature entrance Glazed Canopy.
03	Trapezoidal profile built up cladding roof system in Goosewing Grey (BS 10 A 05).
04	Bullnose Eaves, Gutters & RWP's in Anthracite Grey (RAL 7016).
05	Integrated Kingspan KS1000 DLTR Lay-Lite Trapezoidal rooflights (or similar approved).
06	Double glazed aluminium framed curtain walling system, with double doors in Anthracite Grey (RAL 7016).
07	Glazed spandrel panel to floor junctions in White Aluminium RAL 9006.
08	Windows set within cladding system; window frames to be in Anthracite Grey (RAL 7016) to match curtain walling system. Spandrel panel at floor junction.
09	External steel fire escape doors in Grey Aluminium RAL 9007(external) Pure white RAL 9010 (internal).
11	Horizontal KS1000 Micromb built up wall cladding system external capping sheet in Anthracite Grey (RAL 7016).
12	Vertical Trapezoidal 32'1000 profile built up wall cladding system external capping sheet in White Aluminium (RAL 9006).
13	Norclad Timber cladding system, European Redwood
14	Integrated Norclad Timber cladding louver system, European Redwood
15	Unit Signage, Aluminium signage fixed back to anthracite cladding behind. Signage by occupier.



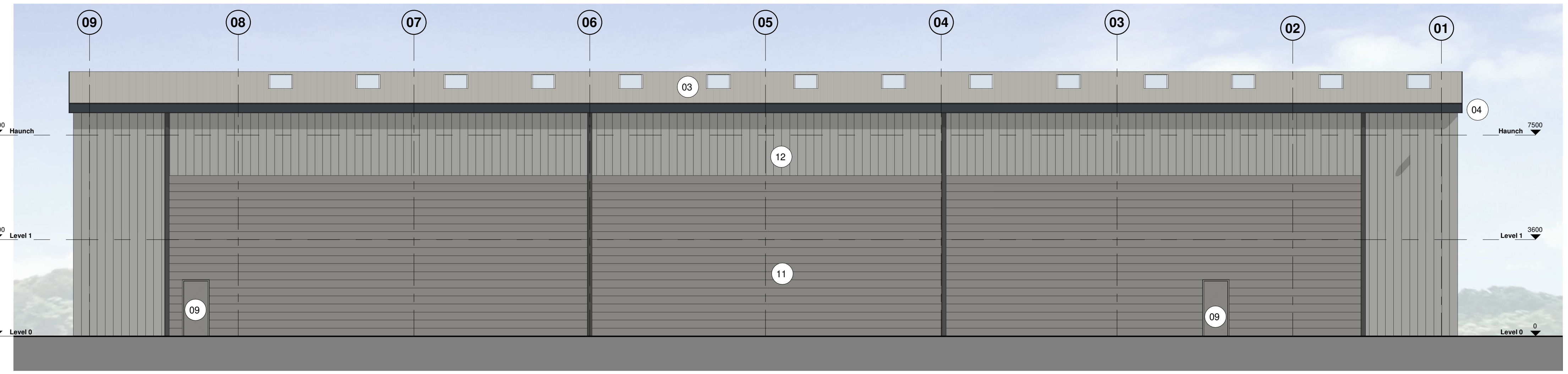
1 21-ZZ Unit 04_ Indicative Elevation A
1 : 100



2 21-ZZ Unit 04_ Indicative Elevation B
1 : 100



3 21-ZZ Unit 04_ Indicative Elevation C
1 : 100



4 21-ZZ Unit 04_ Indicative Elevation D
1 : 100

P5	Drawing updated for Planning	BE	16.07.21	DC
P4	Drawing updated	BE	16.02.21	DC
P3	Drawing updated	BE	05.02.21	DC
P2	Drawing updated for Planning	BE	15.12.20	DC
P1	First Issue of Drawing	AW	15.10.20	DC
Rev	Revision Details	Drawn	Date	Checked

C4 Projects

Quayside, Walspool Business Park, Stockton Heath, Warrington, Cheshire, WA4 6HL
t: 01925 751 852
e: info@c4projects.co.uk
www.c4projects.co.uk

Project Management • Architecture • Building Surveying • Cost Consultancy

Client
Redsun Projects

Project
Croft Retail Park
Bromborough

Drawing Title
Unit 04
Indicative Elevations

Status Purpose of Issue
S2 SUITABLE FOR INFORMATION

Drawn by AW **Created** 15.10.20
C4 Job no. 19053 **Scale** As indicated @ A1

Drg no.	19053-C4P-B43-ZZ-DR-A-2100	Rev	P5
----------------	-----------------------------------	------------	-----------