

Drawing Status
PLANNING

This drawing is © C4 Projects and is not to be copied, reproduced or re-distributed either in whole or in part without the prior written permission of the originator.

The originator shall have no responsibility for any liability, loss, cost, damage or expense arising from or relating to any use of this document other than for its intended purpose on this project.

This drawing shall be read in conjunction with all other relevant drawings, specifications and associated documentation. Any discrepancies, errors or omissions are to be reported to the originator before proceeding with work.

All dimensions are to be checked on site by the contractor prior to proceeding with any work. This drawing shall not be scaled to ascertain any dimensions, work to figured dimensions only.

DISCLAIMER
When this drawing is issued in CAD, it is an uncontrolled version issued for information only, to enable the recipient to prepare their own documents/ drawings for which they are solely responsible.

SOFTWARE INTEROPERABILITY
C4 Projects prepared this drawing using Autodesk REVIT Architecture.

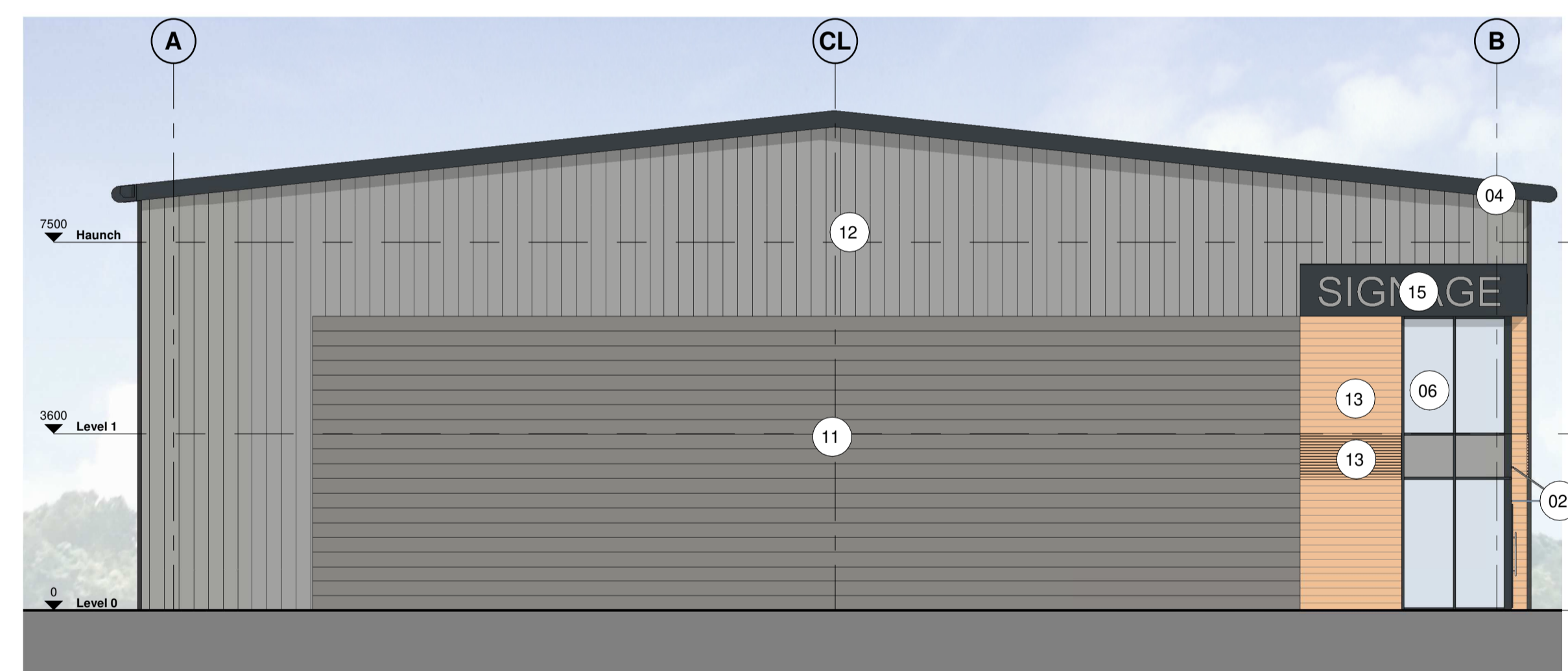
C4 Projects does not accept liability for any loss or degradation of any information held in the drawing resulting from the translation from the original file format to any other file format or from the recipient's reading of it in any other programme.

Hazard Identification		
ref	hazard	date

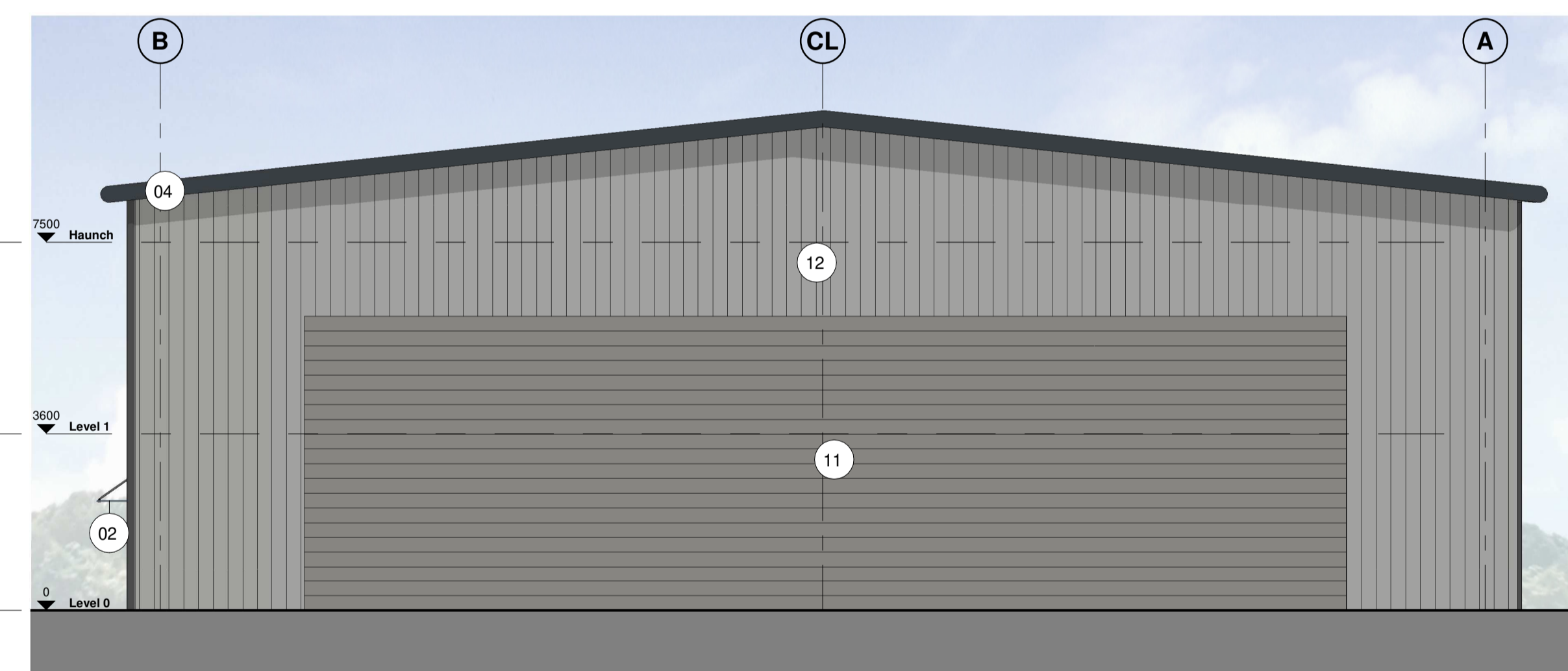
Material Key	
Number	Material
01	Insulated sectional overhead industrial doors in White Aluminium RAL 9006
02	Feature entrance Glazed Canopy
03	Trapezoidal profile built up cladding roof system in Goosewing Grey (BS 10 A 05)
04	Bullnose Eaves, Gutters & RWP's in Anthracite Grey (RAL 7016)
05	Integrated Kingspan KS1000 DLTR Lay-Lite Trapezoidal rooflights (or similar approved)
06	Double glazed aluminium framed curtain walling system, with double doors in Anthracite Grey (RAL 7016)
07	Glazed spandrel panel to floor junctions in White Aluminium RAL 9006
09	External steel fire escape doors in Grey Aluminium RAL 9007(external) Pure white RAL 9010 (internal)
11	Horizontal KS1000 Microrib built up wall cladding system external capping sheet in Anthracite Grey (RAL 7016)
12	Vertical Trapezoidal 32/1000 profile built up wall cladding system external capping sheet in White Aluminium (RAL 9006)
13	Norclad Timber cladding system, European Redwood
15	Unit Signage, Aluminium signage fixed back to anthracite cladding behind, Signage by occupier.



1 21-ZZ Unit 03_ Indicative Elevation A
1:100



2 21-ZZ Unit 03_ Indicative Elevation B
1:100



3 21-ZZ Unit 03_ Indicative Elevation C
1:100



4 21-ZZ Unit 03_ Indicative Elevation D
1:100

P2 Updated for Planning Issue	BE 08.07.21
P1 Drawing Issued for Planning	BE 04.03.21 DC
Rev / Revision Details	Drawn Date Checked

C4 Projects
Quayside, Wilderspool Business Park, Stockton Heath, W44 8HL, t: 01925 751 852 e: info@c4projects.co.uk www.c4projects.co.uk

Project Management • Architecture • Building Surveying • Cost Consultancy

Client
Redsun Projects

Project
Croft Retail Park Bromborough

Drawing Title
Unit 03 Elevations

Status Purpose of Issue
S2 SUITABLE FOR INFORMATION

Drawn by AW **Created** 15.10.20

C4 Job no. 19053 **Scale** As indicated @ A1

Dwg no.	Rev
19053-C4P-B36-ZZ-DR-A-2100	P2