

0m 2m 4m 6m 8m
VISUAL SCALE 1:100 @ A1

Drawing Status
PLANNING

This drawing is © C4 Projects and is not to be copied, reproduced or re-distributed either in whole or in part without the prior written permission of the originator.

The originator shall have no responsibility for any liability, loss, cost, damage or expense arising from or relating to any use of this document other than for its intended purpose on this project.

This drawing shall be read in conjunction with all other relevant drawings, specifications and associated documentation. Any discrepancies, errors or omissions are to be reported to the originator before proceeding with work.

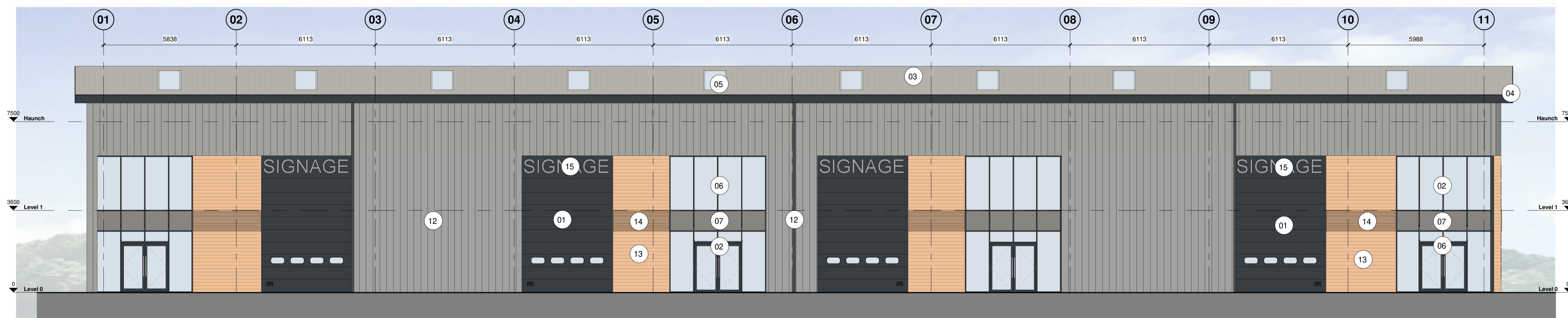
All dimensions are to be checked on site by the contractor prior to proceeding with any work. This drawing shall not be scaled to ascertain any dimensions, work to 'figured dimensions' only.

DISCLAIMER
When this Drawing is issued in CAD, it is an uncontrolled version issued for information only. To enable the recipient to prepare their own documents/drawings for which they are solely responsible.

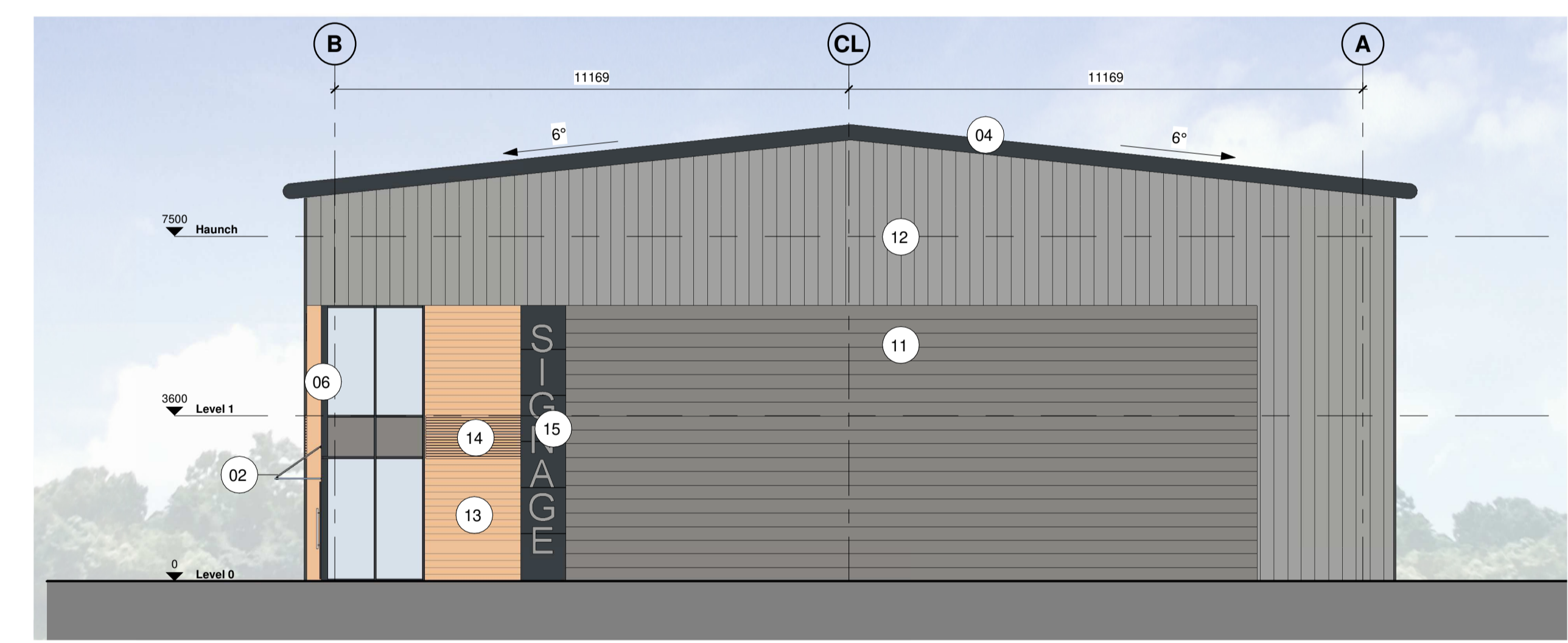
SOFTWARE INTEROPERABILITY
C4 Projects prepared this drawing using Autodesk REVIT Architecture.

C4 Projects does not accept liability for any loss or degradation of any information held in the drawing resulting from the translation from the original file format to any other file format or from the recipient's reading of it in any other programme.

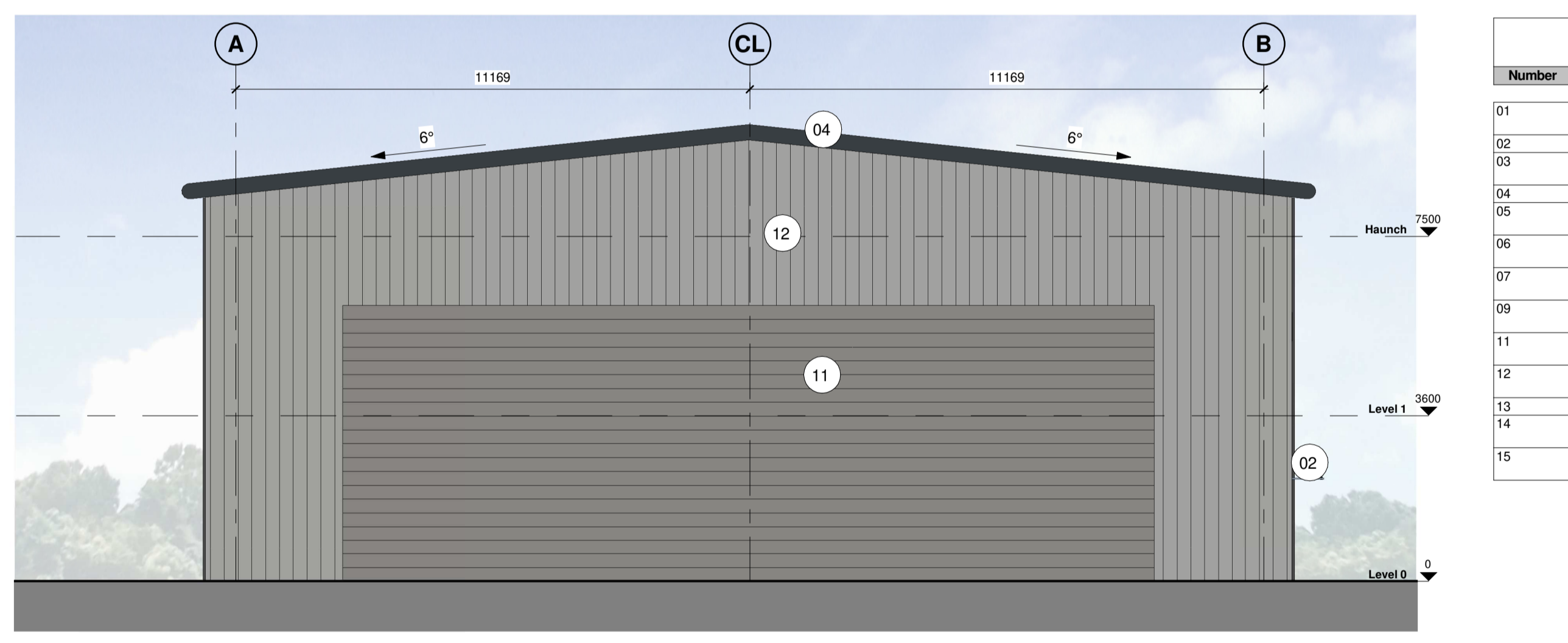
| Hazard Identification | | |
|-----------------------|--------|------|
| ref | hazard | date |
| | | |



1 21-ZZ_Unit 02_Indicative Elevation A
1:100

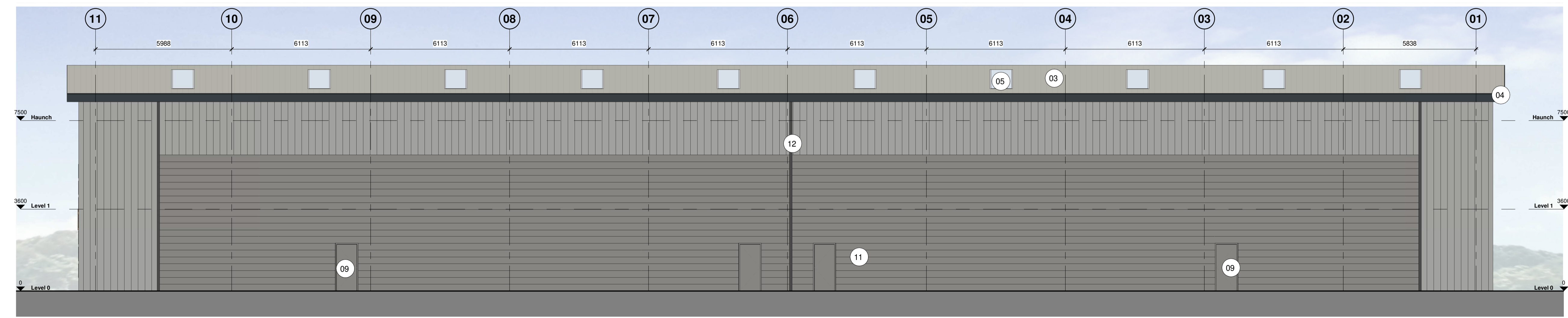


2 21-ZZ_Unit 02_Indicative Elevation B
1:100



3 21-ZZ_Unit 02_Indicative Elevation C
1:100

| Material Key | |
|--------------|---|
| Number | Material |
| 01 | Insulated sectional overhead industrial doors in White Aluminium RAL 9006 |
| 02 | Feature entrance Glazed Canopy |
| 03 | Trapezoidal profile built up cladding roof system in Goosewing Grey (BS 10 A 05) |
| 04 | Bullnose Eaves, Gutters & RWP's in Anthracite Grey (RAL 7016) |
| 05 | Integrated Kingspan KS1000 DLTR Lay-Lite Trapezoidal rooflights (or similar approved) |
| 06 | Double glazed aluminium framed curtain walling system, with double doors in Anthracite Grey (RAL 7016) |
| 07 | Glazed spandrel panel to floor junctions in White Aluminium RAL 9006 |
| 09 | External steel fire escape doors in Grey Aluminium RAL 9007(external) Pure white RAL 9010 (internal) |
| 11 | Horizontal KS1000 Microrib built up wall cladding system external capping sheet in Anthracite Grey (RAL 7016) |
| 12 | Vertical Trapezoidal 32/1000 profile built up wall cladding system external capping sheet in White Aluminium (RAL 9006) |
| 13 | Norclad Timber cladding system, European Redwood |
| 14 | Integrated Norclad Timber cladding louver system, European Redwood |
| 15 | Unit Signage, Aluminium signage fixed back to anthracite cladding behind. Signage by occupier. |



4 21-ZZ_Unit 02_Indicative Elevation D
1:100

| | | | |
|----|------------------------------------|----|-------------|
| P4 | Updated for Planning | BE | 08.07.21 |
| P3 | Drawing Updated following comments | BE | 15.02.21 DC |
| P2 | Drawing Updated | BE | 05.02.21 DC |
| P1 | First Issue of Drawing | AW | 13.10.20 DC |

C4 Projects
Quayside, Widnespool Business Park, Stockton Heath, Warrington, Cheshire, WA4 6HL
t: 01525 751 852
e: info@c4projects.co.uk
www.c4projects.co.uk

Project Management • Architecture • Building Surveying • Cost Consultancy

Client
Redsun Projects

Project
Croft Retail Park
Bromborough

Drawing Title
Unit 02
Indicative Elevations

Status Purpose of Issue
S2 SUITABLE FOR INFORMATION

Drawn by AW **Created** 13.10.20

C4 Job no. 19053 **Scale** As indicated **@ A1**

| Dwg no. | Rev |
|----------------------------|-----|
| 19053-C4P-B28-ZZ-DR-A-2100 | P4 |