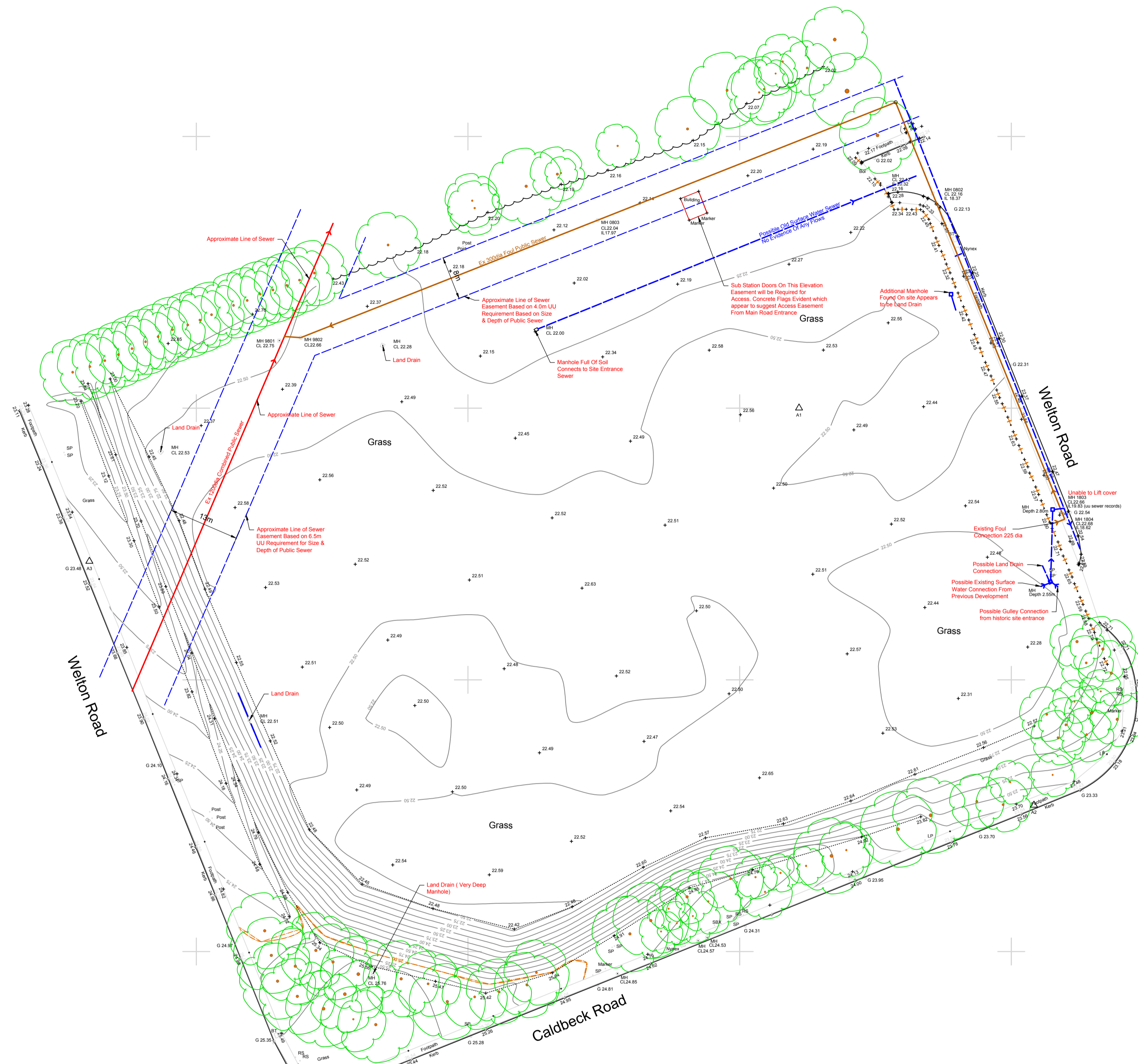


NOTES

1. This drawing to be read in conjunction with all relevant architect's, engineer's and mechanical and electrical engineer's drawings, specifications etc.
2. All dimensions to be checked on site.
3. Any discrepancies, contradictions to be notified to project architect / engineer.



SEWER EASEMENT LOCATIONS ARE BASED ON APPROXIMATE POSITION OF SEWER BASED ON VISUAL ALIGNMENT FROM ABOVE GROUND.

Preliminary

P3	17.10.2018	UPDATED SEWER ALIGNEMENT FOLLOWING SITE INVESTIGATION	INFORMATION	MDJ
P2	11.10.2018	EXISTING PUBLIC SEWER EASEMENTS ADDED	RECORDED	MDJ
P1	05.10.2018	FIRST ISSUE	PRELIMINARY	MDJ
Rev.	Date	Description	Status	Drawn by

Project The Croft
Caldbeck / Welton Road
Bromborough



Title Preliminary Drainage Investigations

This drawing is the property of Muir Associates (UK) LIMITED and must not be reproduced without permission.

Director	Proj. Eng.	Client	
Drawn by	Checked by	Drawing Number	Rev.
Scale 1:500 @ A1	Date Oct 2018	18-1029-SK001	P3