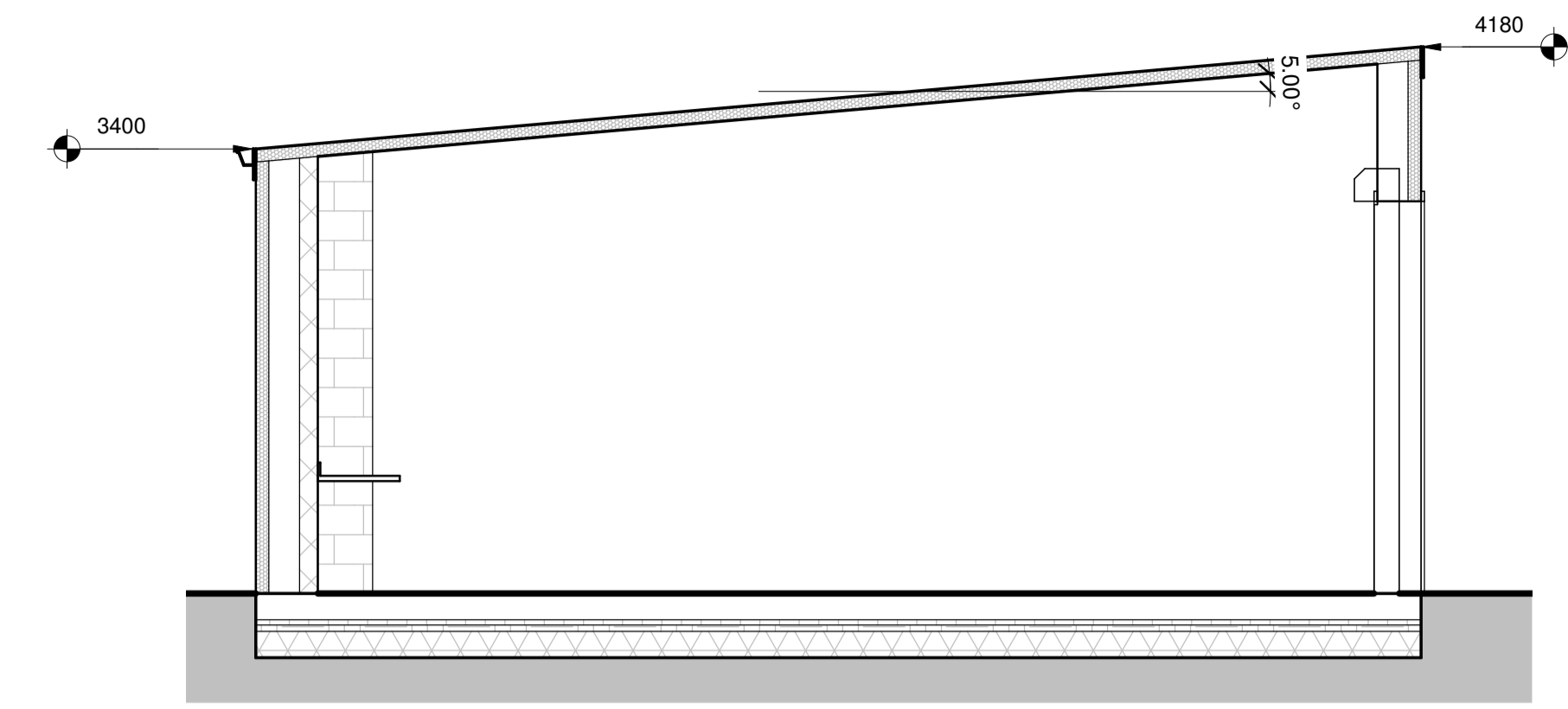


00 Floor Plan  
1 : 50



01 Section 1  
1 : 50

**CONSTRUCTION NOTES**

**FLOOR TO VALET BAY:**  
REINFORCED CONCRETE SLAB PER ENGINEER'S SPEC WITH POWER FLOATED FINISH WITH SUITABLE SEALANT APPLIED FOR DUST SUPPRESSION.. 45MM KINGSPAN KOOLTHERM K103 INSULATION BELOW WITH SEPERATION LAYER ABOVE AS KINGSPAN RECOMMENDATIONS. 1200 GAUGE VISQUEEN DPM/DPC TO ENGINEERS SPEC.

**EXTERNAL WALLS TO VALET BAY:**  
KINGSPAN KS1000RW TRAPEZOIDAL VERTICAL COMPOSITE PANEL 100MM CORE THICKNESS.  
COLOUR ANTHRACITE RAL 7016 EXTERNALLY, WHITE INTERNALLY. INCLUDE FOR INSULATED PREFORMED CORNERS AND REVEALS TO WINDOWS AND DOORS TO MATCH CLADDING COLOUR.  
INTERNAL FINISH TO BE 140MM LIGHTWEIGHT PAINT GRADE BLOCKWORK TO RECEIVE WHITE PAINT FINISH TO FULL HEIGHT.

EXHAUST EXTRACTION TO BE SUPPLIED AND FITTED BY GARAGE EQUIPMENT UK. ALLOW FOR ALL TERMINATIONS THROUGH WALL CLADDING.

**INTERNAL WALLS TO VALET BAY:**  
INTERNAL FINISH TO BE 140MM LIGHTWEIGHT PAINT GRADE BLOCKWORK TO RECEIVE WHITE PAINT FINISH.

STEEL COLUMNS TO REAR ELEVATION AND ANY OTHER ELEVATION WHICH REQUIRED FIRE RESISTANCE AS A RESULT OF BOUNDARY PROXIMITY TO BE FULLY ENCASED IN BLOCKWORK. NOTED INDICATIVELY ON PLAN.

**ROOF TO VALET BAY:**  
KINGSPAN TRAPEZOIDAL KS1000RW COMPOSITE ROOF PANELS 120MM CORE THICKNESS.

**GUTTERS AND DOWN-PIPES:**  
GUTTER WITH GUTTER SUPPORT, TO BE STEEL, COLOUR COATED PVF2 FINISH. COLOUR GREY RAL 7016 TO MATCH WALL CLADDING PANELS.  
RAINWATER PIPES TO BE STEEL, COLOUR COATED PVF2 FINISH, COLOUR GREY RAL 7016 TO MATCH WALL CLADDING PANELS.

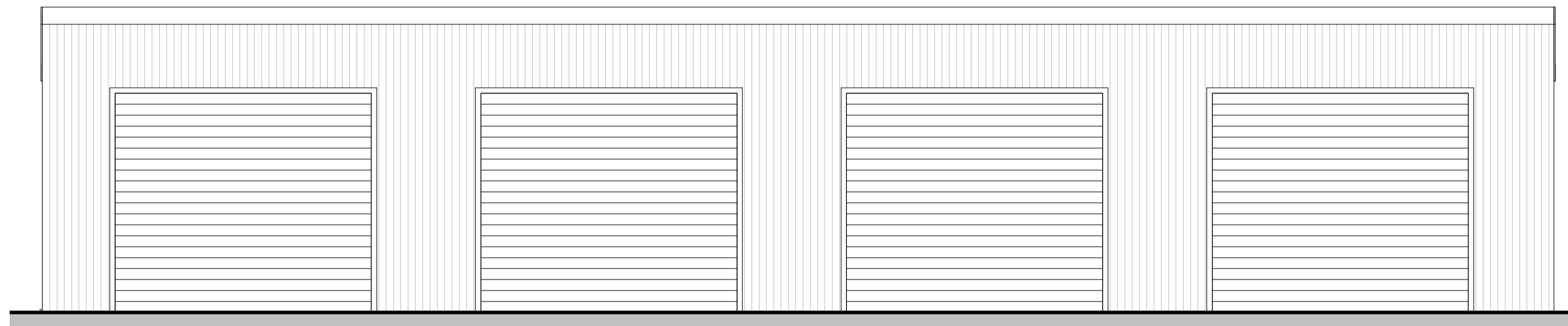
**EXTERNAL DOORS:**  
VEHICLE DOORS - ELECTRICALLY OPERATED WITH SENSOR ACTIVATION EXTERNALLY AND PUSH BUTTON ACTIVATION INTERNALLY, THERMALLY INSULATED ROLLER SHUTTER DOORS. ALUMINIUM FRAMES.  
COLOUR ANTHRACITE RAL 7016.  
VEHICLE DOORS 3500X3000MM CLEAR OPENINGS.

EXTERNAL FIRE ESCAPE SINGLE STEEL INSULATED DOORSETS (COL: ANTHRACITE) WITH PUSH PAD ESCAPE IRONMONGERY WITH LOCK ON EXTERNAL SIDE.

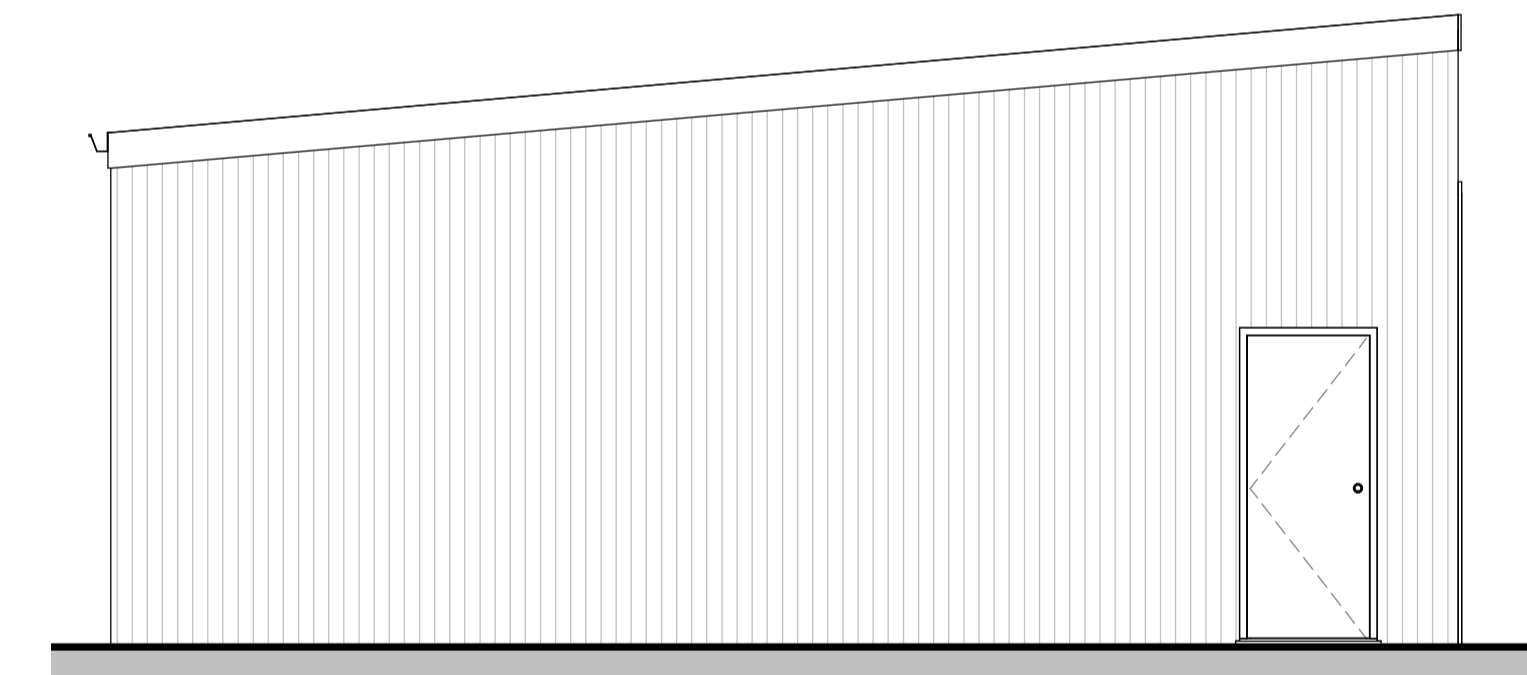
**EMERGENCY LIGHTS**  
BOXED EXIT UNITS TO BE LOCATED INSIDE AND ABOVE FINAL EXIT FIRE DOORS  
BULKHEAD E/L UNIT LOCATED EXTERNALLY ABOVE FINAL EXIT DOORS  
E/L TWIN SPOTS AS REQUIRED INSIDE UNIT

**FIRE ALARM AND DETECTION SYSTEM**  
FIRE ALARM/DETECTION TO BE INSTALLED IF REQUIRED. IF REQUIRED, WHERE POSSIBLE, LINKED TO EXISTING SYSTEM.

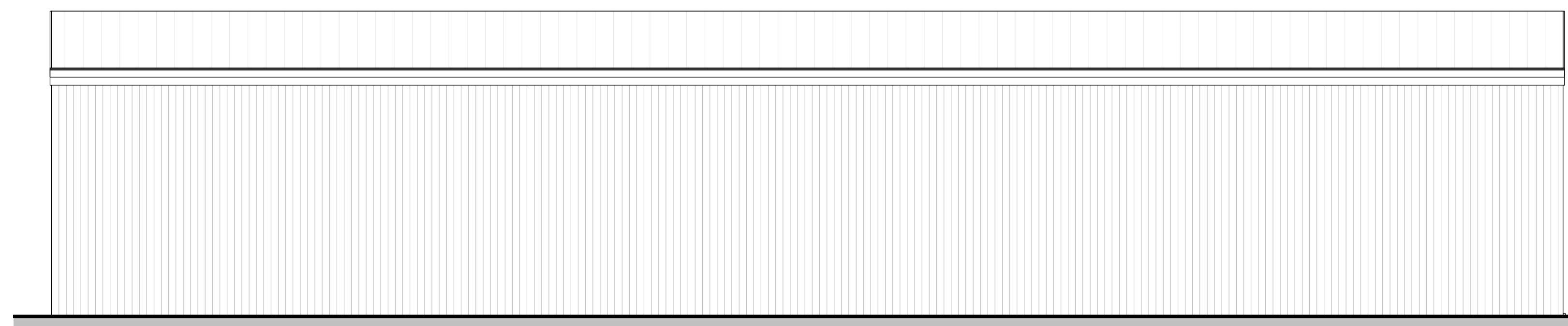
**PORTABLE FIRE FIGHTING AND SIGNAGE**  
ASSURE ALARMS TO INSTALL REQUIRED PORTABLE FIREFIGHTING EQUIPMENT AND SUPPLY REQUIRED SIGNAGE.



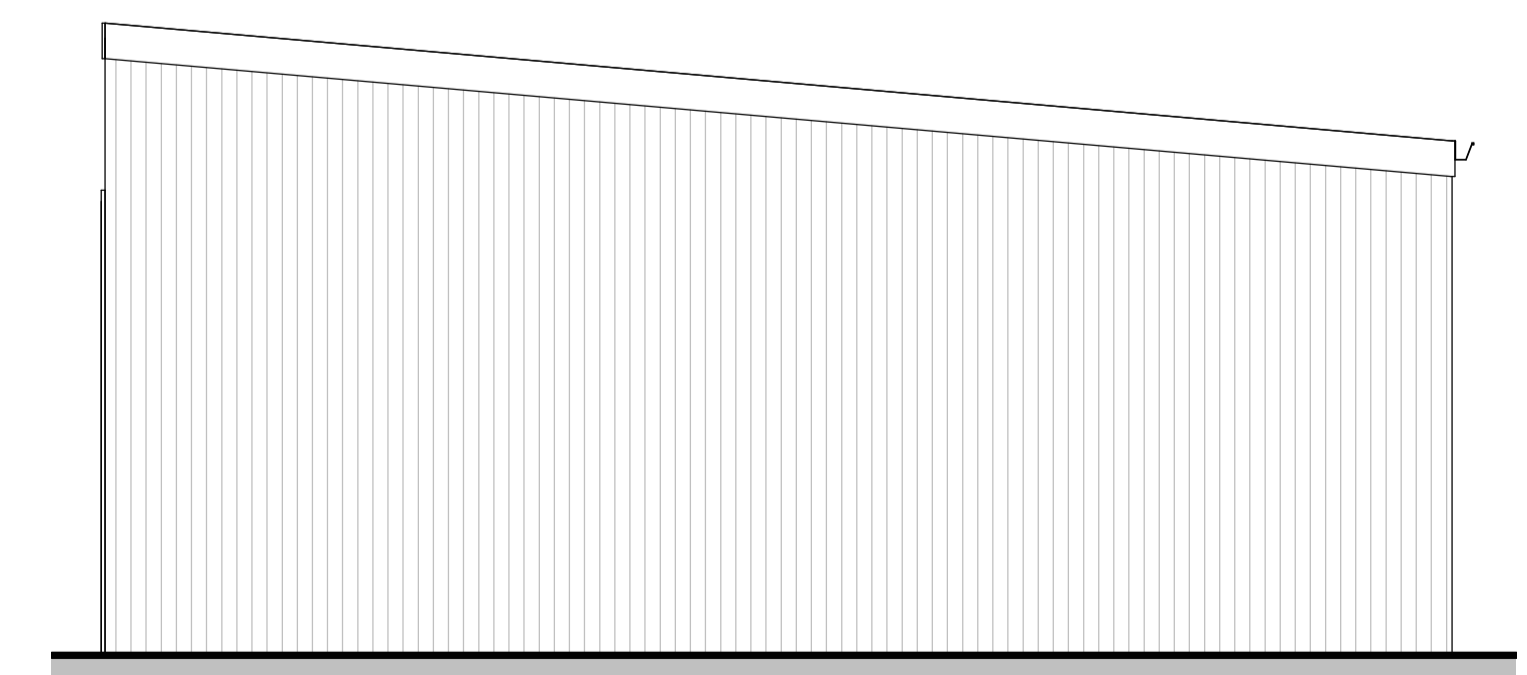
01 Elevation 1  
1 : 50



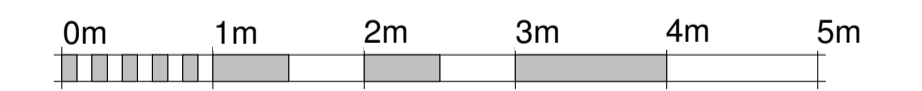
03 Elevation 3  
1 : 50



02 Elevation 2  
1 : 50



04 Elevation 4  
1 : 50



VISUAL SCALE 1:50 @ A1

**PRELIMINARY**

Size A1

Revision	Date	Amendment	MA	By
A	26/08/2021	Fire safety notes added		

**Arnold Clark**  
Blackpool Vauxhall  
**New Valet Building**  
**Proposed Plans/Elevations**

