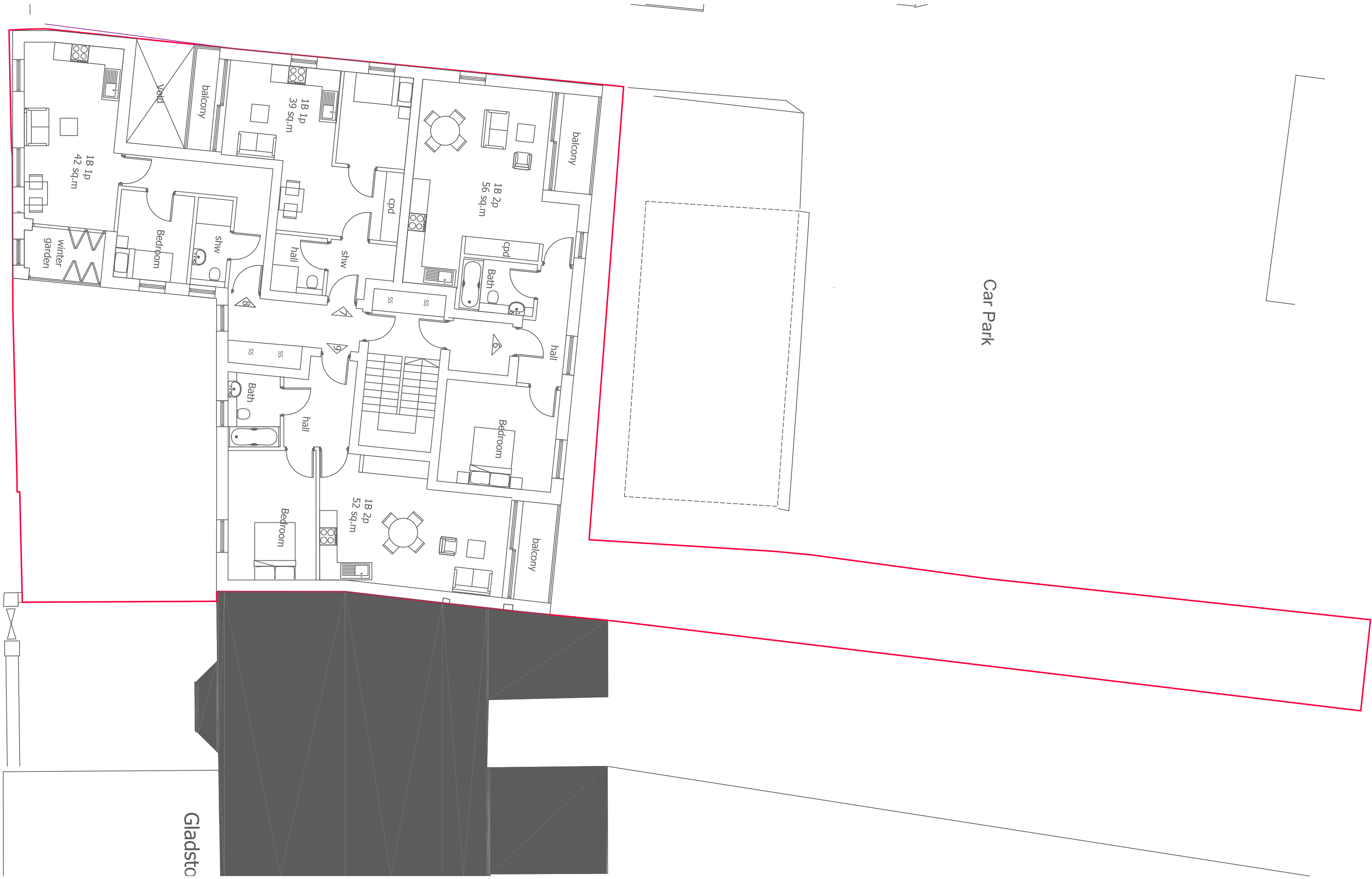


AREAS KEY:
(Gross Internal Floor Areas)

Ground Floor	
Commercial Space	150m2
Laundry Space	7m2
Staff Room	17m2
Flat 1 -1bed, 2p & External Terrace	52m2 12m2
First Floor	
Meeting Room	14m2
Flat 2- 1bed, 1p & External Terrace	39m2 4m2
Flat 3- 1bed, 1p & External Terrace	39m2 10m2
Flat 4- 1bed, 1p & External Terrace	42m2 5m2
Flat 5- 1bed, 2p & External Terrace	52m2 4m2
Second Floor	
Flat 6- 1bed, 2p & External Terrace	56m2 4m2
Flat 7- 1bed, 1p & External Terrace	39m2 3m2
Flat 8- 1bed, 1p & External Terrace	42m2 5m2
Flat 9- 1bed, 2p & External Terrace	52m2 4m2
Third Floor	
Flat 10- 1bed, 1p External Terrace	39m2 10m2
Flat 11- 1bed, 1p External Terrace	39m2 13m2
Flat 12- 1bed, 2p External Terrace	51m2 10m2
Circulation/Service Risers	103m2



Roof Plan



Second Floor Plan



Third Floor Plan

- E 210816 PLANNING ISSUE**
- D 210811 Draft Planning Issue
- C 210723 Draft Planning Issue
- B 210807 Amendments following fire consultants initial comments and changes to commercial space following client's initial comments
- A 1st & 2nd fir-to fire heights altered to 3m, windows increased in width, amended terrace size to flat 11. Added: internal bedrooms, commercial unit layout, winter gardens, balcony to flat 7

rev date

description

1:100 @A1 | draw:JG | check: BH | issued: 16/08/21

LOMAX

LOMAX

LOMAX

Client: Southdown Housing Association

Project: 186-187 Lewes Road

Drawing Name: Proposed 2nd, 3rd & Roof Plan

Drawing No.: 21033 PA/007

Rev : E

hello@loma.design

Do not scale from this drawing