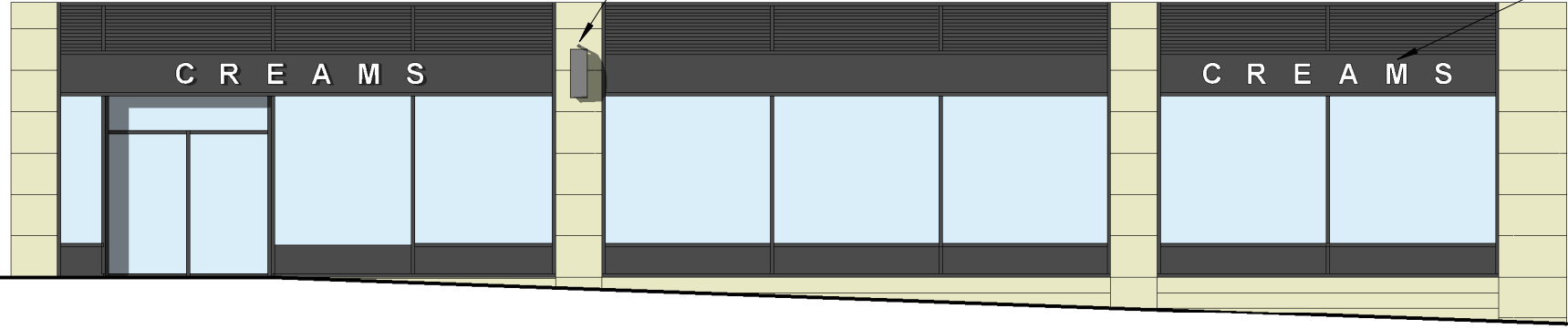


EXISTING SIGNAGE (APPROX 300mm HIGH LETTERING) FIXED DIRECTLY TO SUBSTRATE WITH FACE MOUNTED BULB LIGHTING SET WITHIN THE LETTERING.

EXISTING FRONT ELEVATION

1 : 100



PROPOSED HANGING SIGNAGE ATTACHED TO EXISTING HANGING SIGN POLE FIXED BACK TO BUILDING

MAX 300mm HIGH ALUMINIUM STAND-OFF SIGNAGE WITH REAR HALO LED LIGHTING IN COOL WHITE

LETTERING TO BE PPC RAL 9010. LETTERING STAND-OFF TO BE MAXIMUM 50mm FROM FASCIA

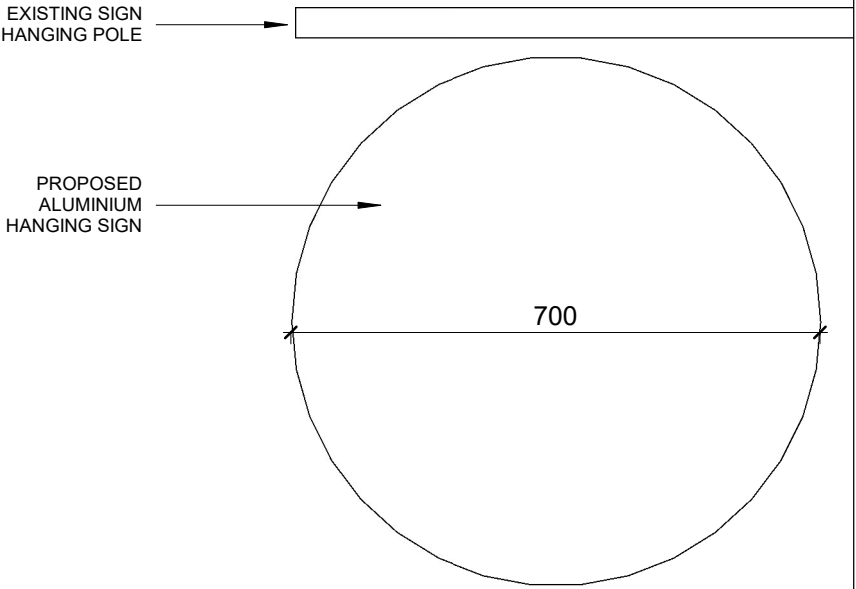
PROJECTION FROM FRONT OF CURTAIN PANEL. SIGNAGE FIXED BACK TO EXISTING CURTAIN SYSTEM ALUMIUM PANEL WITH STAND-OFF SYSTEM FIXINGS

PROPOSED FRONT ELEVATION

1 : 100

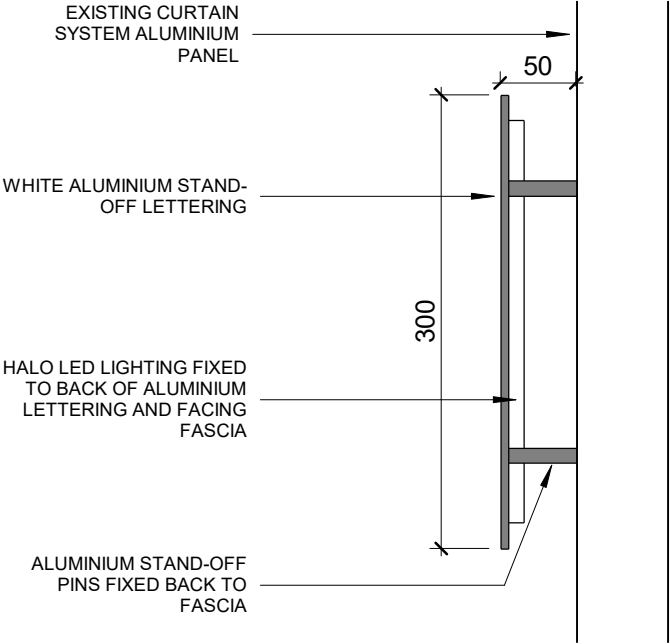


PROPOSED HANGING SIGNAGE (already in place)



PROPOSED HANGING SIGNAGE

1 : 10



PROPOSED SIGNAGE SECTION

1 : 5

| REVISIONS | | | |
|---------------------------------------------------------------------------------------------------------------------------------------------------------|---------------------------------------------------------|----------|-------------|
| Rev. | Description | Chk'd | Date |
| P01 | First Issue | DH | 14.06.21 |
| P02 | Signage height reduced to 300mm | DH | 23.06.21 |
| P03 | Signage details amended following consultation with WDC | DH | 21.06.21 |
| NOTES: | | | |
| SCALE: As indicated | | | |
| PROJECT TITLE 16 CREAM CAFE SIGNAGE | | | |
| DRAWING TITLE EXISTING AND PROPOSED SIGNAGE | | | |
| CLIENT ; «D#k fi'hD#k l V t p l fi a # | | | |
| <div>Summerbell</div> <div>Architecture</div> <div>FLAT 5 15 CLARENDON SQUARE LEAMINGTON SPA WARWICKSHIRE CV32 5QT TEL: 07792764096</div> | | | |
| SUITABILITY | DRN: PT | CHK'D DH | APP'D DH |
| Drawing No: 1002-SUMM-DR-001 | | | Rev: P03 |