

NORTH ELEVATION

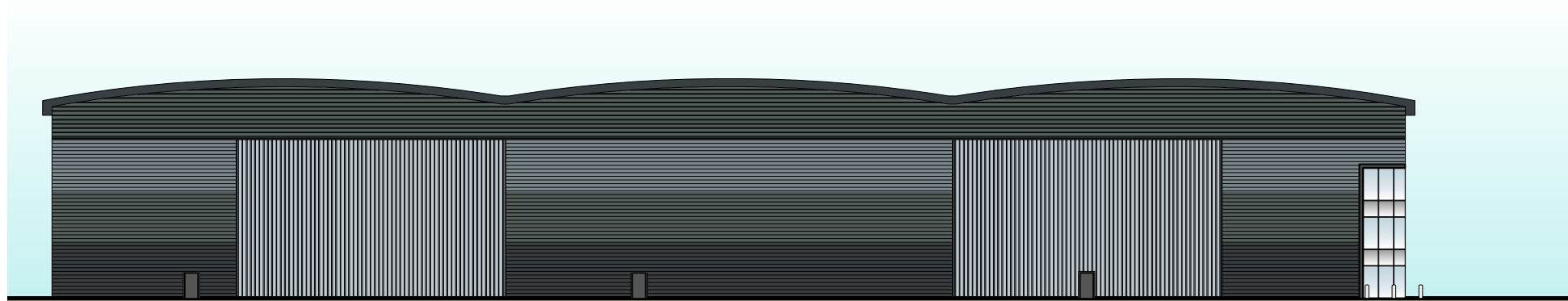


SOUTH ELEVATION

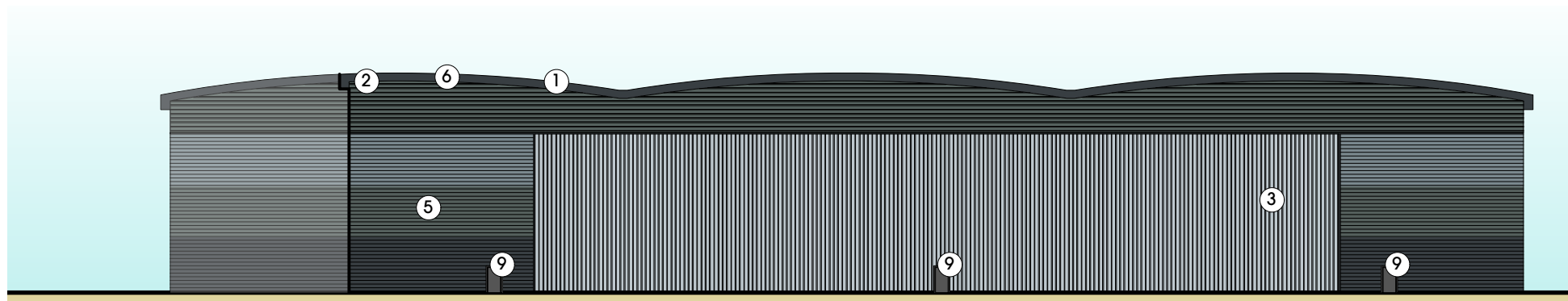
MATERIALS NOTES

ALL NOTES ARE TO BE READ IN CONJUNCTION WITH THE GOODRICH EMPLOYERS SPECIFICATION.

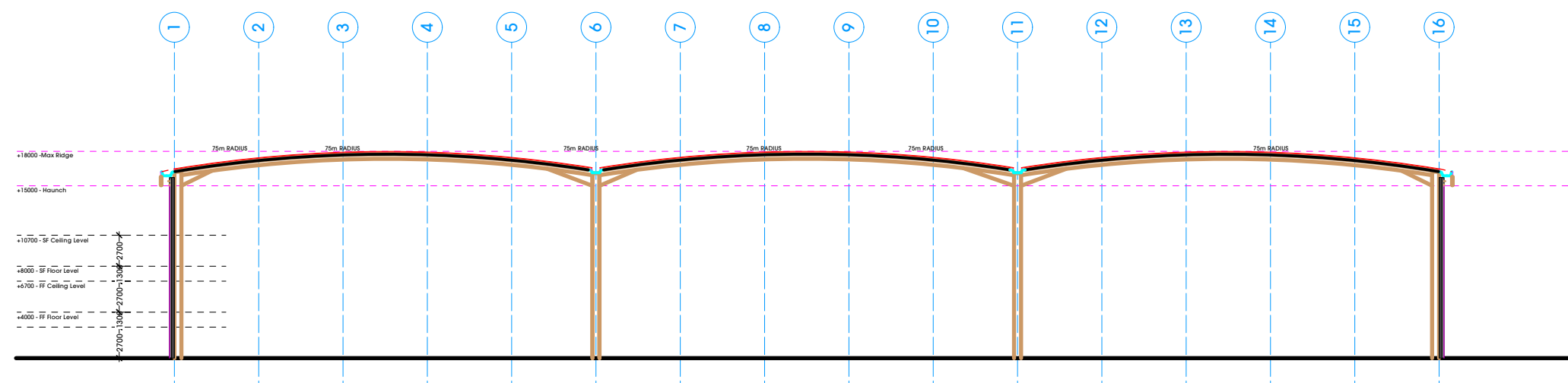
- 1 ROOF
CURVED ROOF TO BE CONSTRUCTED USING BUILT UP STEEL CLADDING - TATA SYSTEM.
RADIUS SET TO INSIDE OF LINER SHEET AT 75m
COLOUR - GOOSEWING GREY BS10A05
- 2 FASCIA DETAILING
TWO / THREE PIECE 2MM PC ALUMINIUM TO FACIAS, EAVES AND VERGES TO PROVIDE HIGH QUALITY FINISH AND DETAILING AROUND THE PERIMETER OF THE BUILDING
COLOUR - ALBATROSS (RAL 240 80 05)
- 3 WALLS
FULL HEIGHT CLADDING TO PERIMETER OF BUILDING. CLADDING ZONES TO BE EITHER:
- HORIZONTAL BUILT UP TATA 300MR CLADDING
BAND 1 - ALASKA GREY (RAL 7000) (Top band)
BAND 2 - MERLIN GREY (RAL 180 40 05)
BAND 3 - ANTHRACITE GREY (RAL 7016) (Bottom band)
- 4 VERTICAL BUILT UP TATA CLADDING (TWIN THERM OR SIMILAR).
COLOUR - PURE GREY RAL 00 55 00 STANDARD TATA HPS COLOUR RANGE)
- 5 HORIZONTAL BUILT UP TATA CLADDING (TWIN THERM OR SIMILAR)
COLOUR - ALBATROSS (RAL 240 80 05)
- 6 ALL TRIMS AND FLASHINGS TO BE ANTHRACITE GREY (RAL 7016)
- 7 SERVICE DOORS
4m WIDE x 4.8m HIGH LEVEL ACCESS SECTIONAL DOORS.
3m WIDE x 3m HIGH DOCK LEVELLER SECTIONAL DOORS (STANDARD DOCKS)
3m WIDE x 3.5m HIGH EURO-DOCK LEVELLER SECTIONAL DOORS (EURO DOCKS)
ALL DOCK LEVELLER SHELTERS / AND EQUIPMENT TO BE PROVIDED AS NOTED IN THE SPECIFICATION.
- 8 DOORS TO INCLUDE VISION PANELS AS INDICATED ON DRAWINGS.
COLOUR - ANTHRACITE GREY (RAL 7016)
- 9 DOCK LEVELLER AREA WALL
TO BE CONSTRUCTED IN INSULATED PRE CAST CONCRETE PRO WALL AS INDICATED ON ELEVATIONS
- 10 FIRE EXIT DOORS
GALVANISED STEEL DOORS AND FRAMES.
COLOUR - ANTHRACITE GREY (RAL 7016). POWDER COATED FINISH
- 11 CURTAIN WALLING / ENTRANCE DOORS
FEATURE PC ALUMINIUM CURTAIN WALLING SYSTEM WITH DOUBLE GLAZED TOUGHENED UNITS. GLAZING TO BE TINTED.
MANUAL ENTRANCE DOORS WITH GLAZED CANOPY
STAINLESS STEEL BOLLARDS TO PROTECT CURTAIN WALLING AS INDICATED ON PLANS.
FRAME COLOUR - ANTHRACITE GREY (RAL 7016)
- 12 OFFICE WINDOWS
2mm PC ALUMINIUM FRAMED DOUBLE GLAZED UNITS WITH OPENING LIGHTS EVERY SECOND WINDOW.
SPANDREL PANELS INSTALLED LOCALLY TO GLAZING INLINE WITH OFFICE WALL SETTING OUT AS NOTED ON PLANS.
- 13 PC ALUMINIUM FLASHING
2mm FEATURE PC ALUMINIUM FLASHING TO OFFICE ELEMENT OF SCHEME AS INDICATED ON ELEVATIONS. ANY SECONDARY STEELWORK REQUIREMENTS TO BE HIDDEN.
FEATURE PC ALUMINIUM FLASHING TO DOCK LEVELLER PRO WALL SURROUND.
COLOUR - ANTHRACITE GREY (RAL 7016)
- 14 EAVES / RAINWATER GOODS
SIPHONIC DRAINAGE SYSTEM BY SPECIALIST -ALL RAINWATER PIPES INTERNAL.



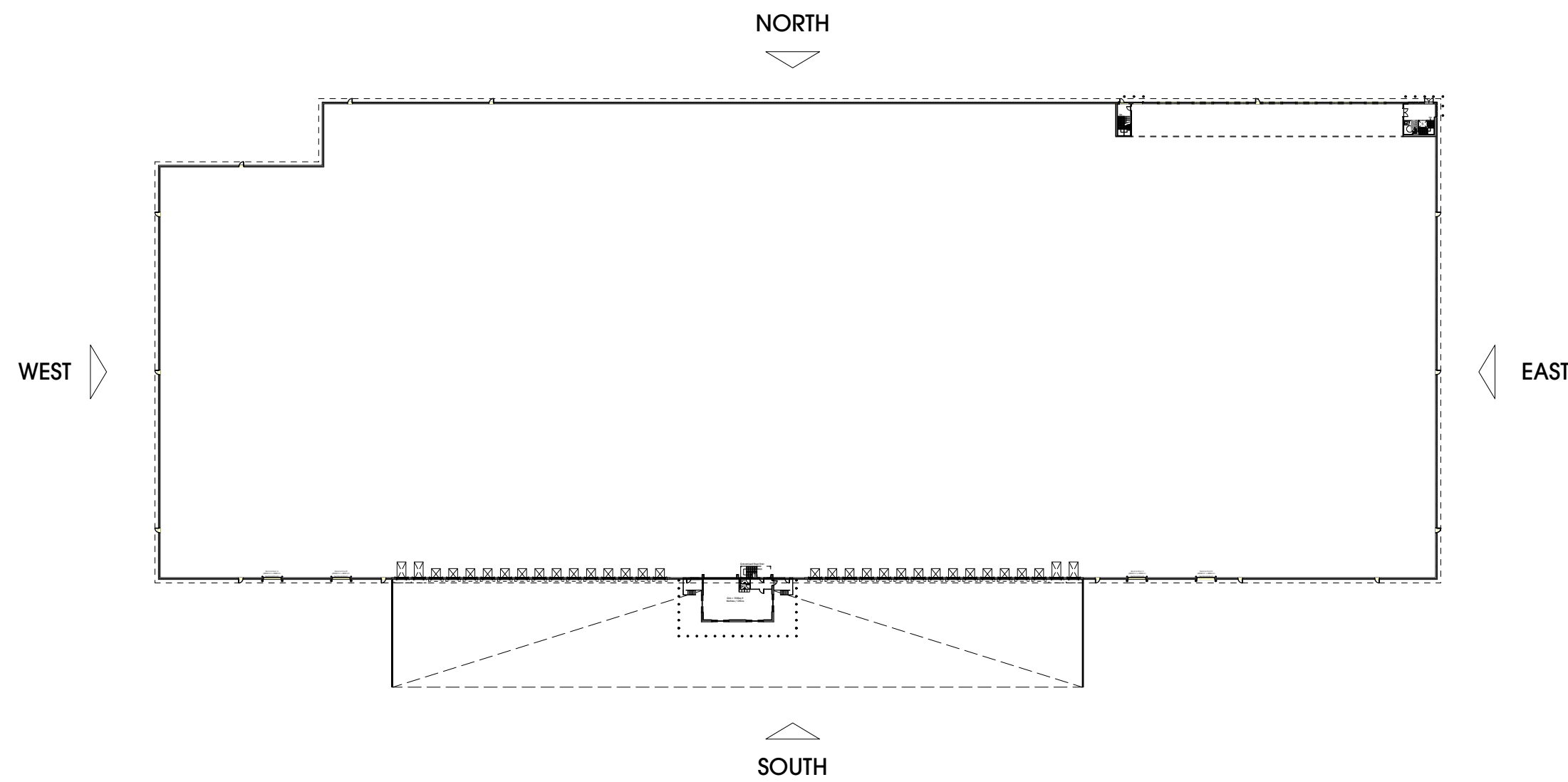
EAST ELEVATION



WEST ELEVATION



TYPICAL SECTION THROUGH BUILDING



htcarchitects

York Place Studio
8 Britannia Street
Leeds
LS1 2DZ

T: (0113) 244 3457

W: www.htcarchitects.co.uk
E: info@htcarchitects.co.uk

client
Tungsten Properties

project
**Severn Road, Bristol
Avonmouth**

drawing title
**Single Unit Elevations - Scheme 2
Prop Building Information**

date	August 2021
status	Planning Issue Sketch
scale	1:500 @ A1
drawn	MJP checked DW rev. -
job no.	2576 dwg no. P3-P151