

**LEGEND**

- A AREA
- CAV CABLE TV SERVICE COVER
- CP CABLE STRAP
- CP COAL PILE
- E ELECTRIC SERVICE
- FH FIRE HYDRANT
- IC INSULATION COVER
- KL LOCKED KEYS FOR ACCESS
- LP LAMP POST
- MH MANHOLE
- NP ROAD NAME PLATE
- PL PAVEMENT LIGHT
- RS ROAD SIGN
- STN STREET STATION
- T BT SERVICE BOX
- TCB TELEPHONE CALL BOX
- TL TRAFFIC LIGHTS
- TP TELEPHONE POLE
- UP UP STEP ABOVE
- DN DOWN BELOW
- (O) OAK OR (P) PLANTED TREE
- (D) DECIDUOUS TREE (NATURALLY GROWN)
- (E) EVERGREEN TREE (INDIVIDUALLY PLANTED)
- (T) TREE (DISCUSS) - 200T OR A GROUP OF TREES

4022-Robins & Day-F1.dwg

**STATION CO-ORDINATES**

STATION	TYPE	EASTING	NORTHING	LEVEL
ST02	NAIL	51026.458	16176.35	70.469
ST03	NAIL	50275.367	16482.992	70.617
ST04	NAIL	50254.427	16862.506	70.803

**BENCH MARK INFORMATION:**  
 ALL LEVELS IN METRES TO ORDNANCE SURVEY DATUM AND BASED ON BENCH MARK STATION COORDINATES AND LEVELS VIA GPS AND TIED INTO THE OS ACTIVE NETWORK

REV	DRG. AMENDMENTS	BY	DATE

**MCCARTHY AND STONE**

Unit 2 Genesis Business Park  
**WORKING SURVEY**  
 G21 SRW

**ROBINS AND DAY VAUXHALL**  
 MILL ROAD  
 SEVENOAKS  
 KENT TN13 2UZ  
 ELEVATIONS

**PROSPAPPLANS LIMITED**

CHARTERED LAND SURVEYORS  
 CENTRAL OFFICE  
 O'HANA HOUSE, | MELTON CLOSE  
 BEETLEY  
 NORFOLK NR20 4FE  
 T: +44 (0) 1662 668504

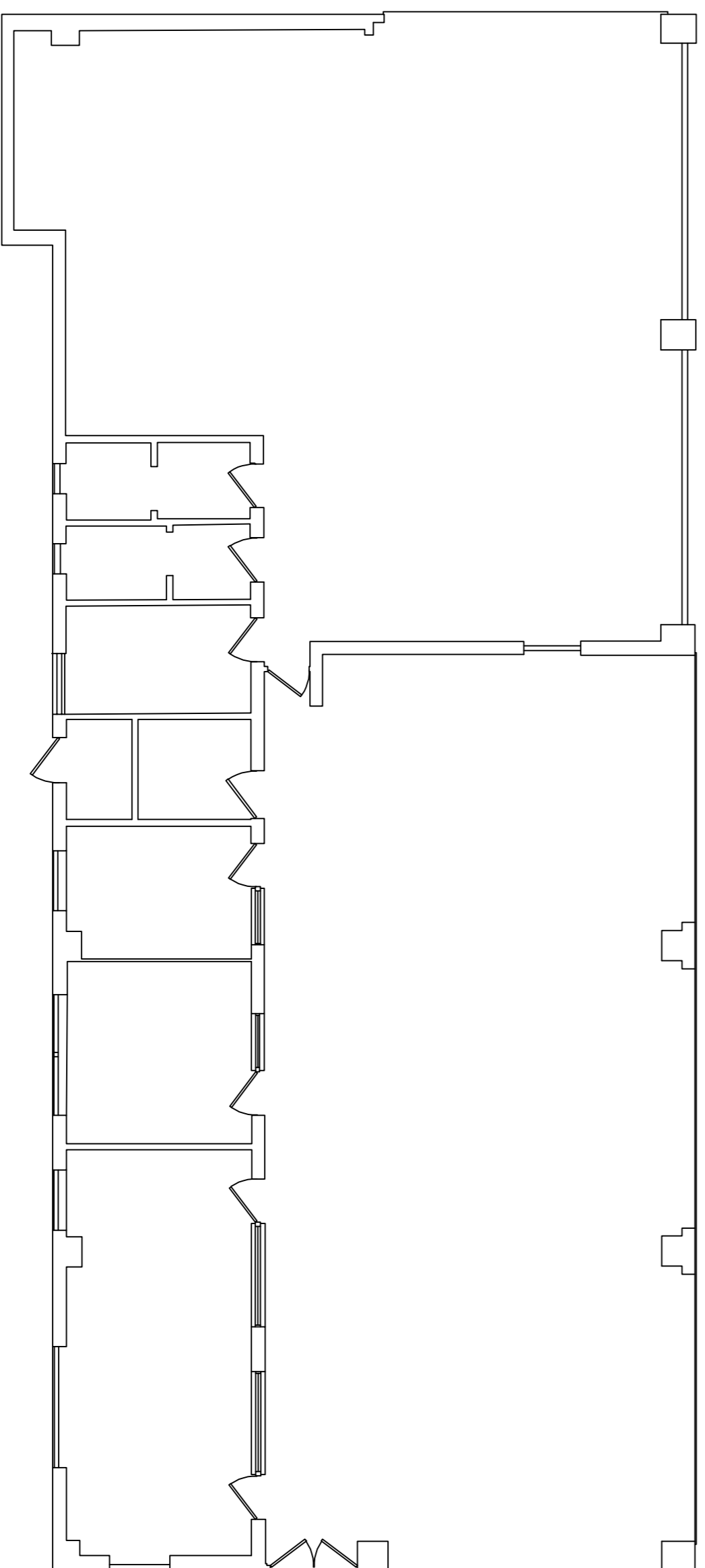
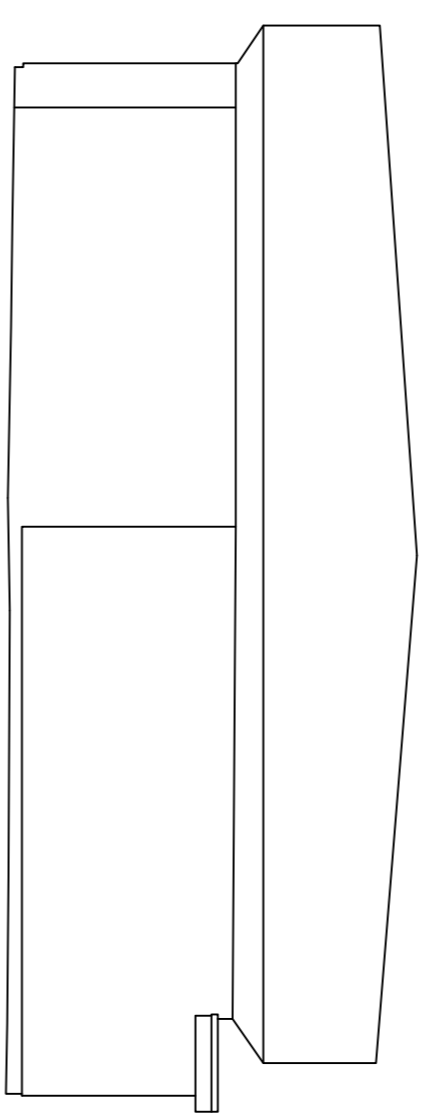
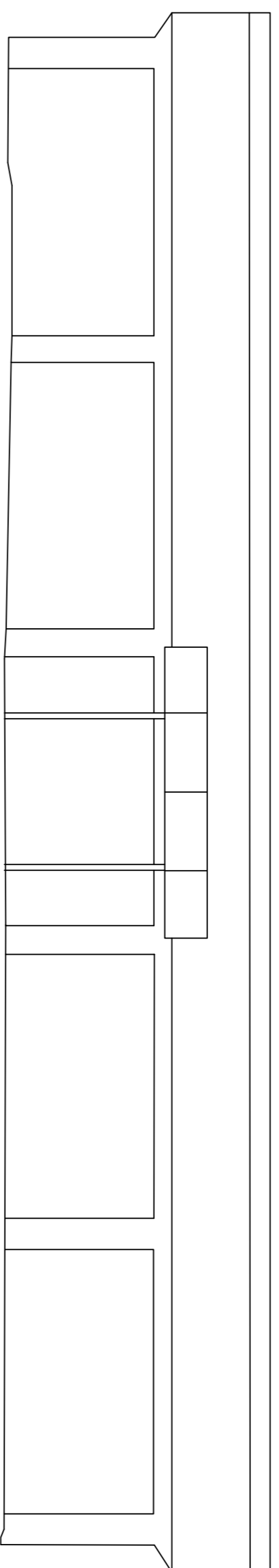
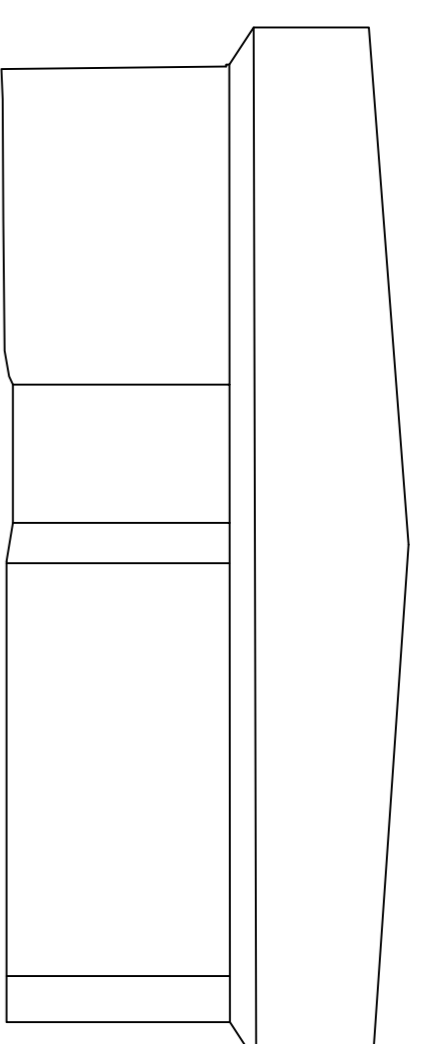
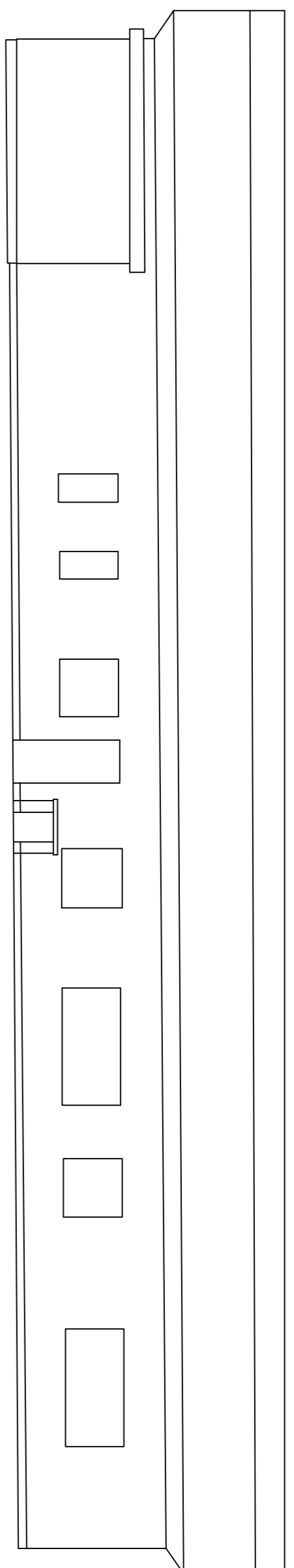
E: info@prospapplans.com  
 W: www.prospapplans.com  
**Operating to ISO9001:2000**

**SCALE: 1:100 @ A1**

**DATE: DECEMBER 2020**

DRAWN BY: G. WILTON  
 CHECKED BY: G. RUTHERFORD

DRG NO: PP/4022/SEVENOAKS/ F2



Ground Floor  
 DN = 97.517M