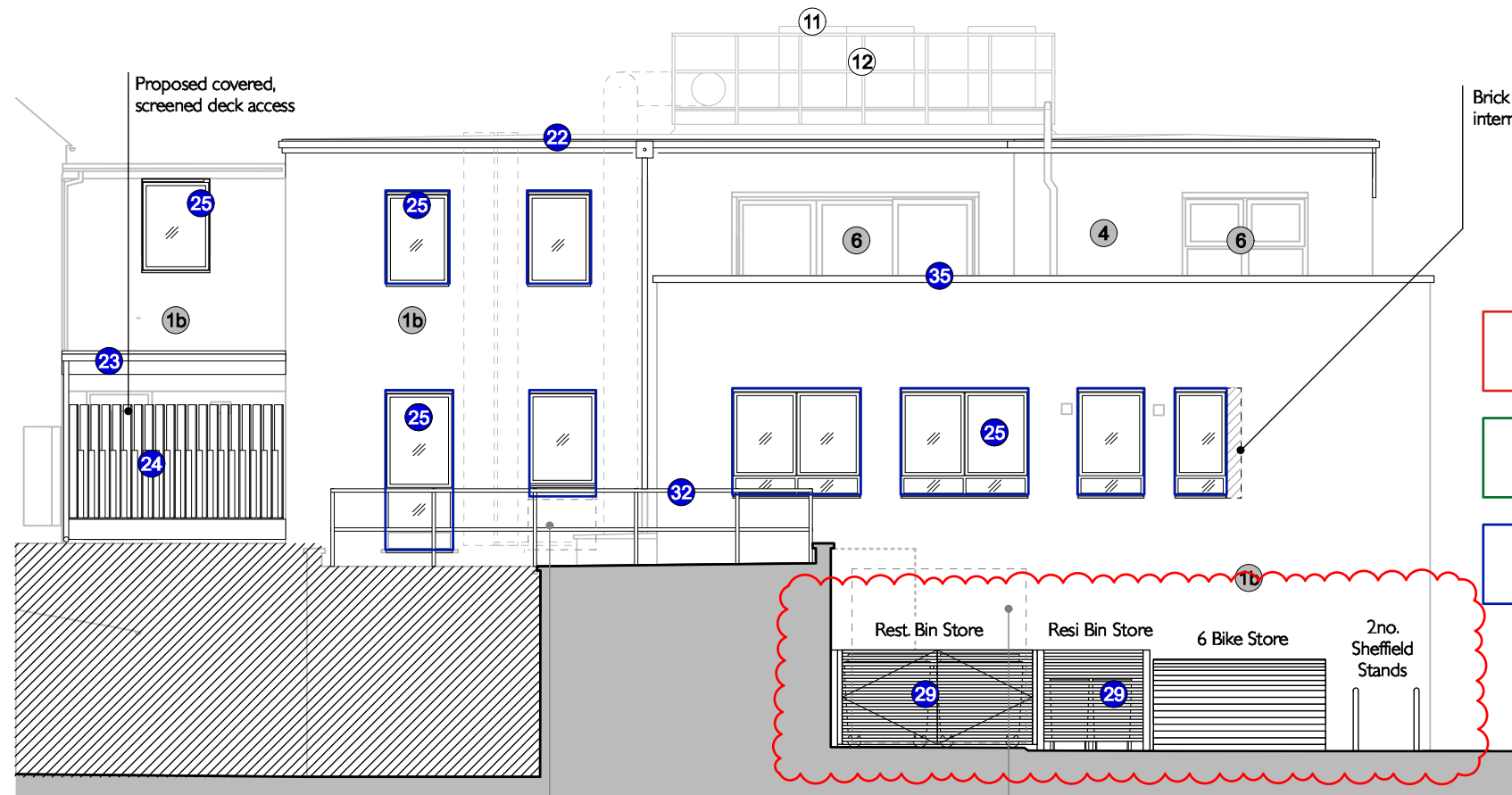


MATERIALS & FITTINGS

KEY

- 1a 19th Century Brick
- 1b 20th Century Brick
- 2 Painted Stone
- 2b Painted Concrete
- 3 Painted Aluminium Slats (Repainted)
- 4 Clay Hung Tiles
- 5 Painted Timber Doors/Windows
- 6 PVC Windows
- 7 Aluminium Doors/Windows
- 8 Slates
- 9 Projecting Timber Window Boxes
- 10 Metal Gate
- 11 Acoustic enclosures for plant
- 12 Handrail
- 13 Painted aluminum window/door
- 14 Slim metal frame window/door
- 15 Timber slatted screen
- 16 New Signage Zone
- 17 Proposed concrete lintel and coping to match 2b
- 18 Proposed hung tile to match existing
- 19 Proposed PPC aluminium gutter with lead flashing beneath
- 20 Proposed painted timber to match existing windows
- 21 Proposed PPC aluminium perimeter gutter
- 22 Proposed PPC aluminium perimeter gutter with painted timber fascia beneath
- 23 Proposed flat roof with PPC aluminium guttering
- 24 Proposed timber screen
- 25 Proposed slim metal frame windows, dark brown in colour
- 26 Proposed double airbrick for extractor vent
- 27 Proposed Automatic Opening Vent for smoke ventilation
- 28 Existing external light to be replaced with new external light
- 29 Proposed timber slatted gates / screens
- 30 Boxing containing incoming services - to be painted to match restaurant signage
- 31 Proposed painted timber door
- 32 Proposed galvanised steel balustrade
- 33 Proposed timber finish entrance door
- 34 Proposed PPC aluminium canopy & panel
- 35 Proposed natural finish precast stone coping
- 36 Proposed timber frame frame sash window

- (x) Existing
- (x) Change consented in previous permission ref 20/AP/1404
- (x) Proposed changes



Brick infilled to allow for internal insulation

Windows Acoustic Performance Key

- Replacement double glazed timber frame sash windows. To have minimum acoustic performance of **30dB Rw + Ctr**
- Existing timber frame sash windows. To be fitted with internal secondary glazing to achieve minimum acoustic performance of **30dB Rw + Ctr** (as a whole buildup.)
- Proposed aluminium frame windows. To have minimum acoustic performance of **25dB Rw + Ctr**

Lower half of window to be filled in to match existing brickwork (consented in previous application)

Gate to be filled in to match existing brickwork (consented in previous application)

Section through No. 27 Dulwich Village (External access for No.27 shown hatched in grey)

No. 25 Dulwich Village