

# TWVPro

TWIN WALL INSULATED CHIMNEY

*IGNITE YOUR AMBITION*



# Contents

Description	Page
Welcome	3
Key Benefits	4
Installing <b>TWPro</b>	5
Product place guides	6-9
Adaptors	12
Starter Pipes	
Straight Pipes	
Elbows & Tees	
Supports	
Fire Stops	
Flashings	
Finishing Plates	
Terminals	
Accessories	
Offset Data	
Support Data	

# Welcome to Mi-Flues

Mi-Flues is a Blackpool based company with factories and distribution centres across England, Scotland and Ireland, and are dedicated to the development of the highest quality flues and chimney products.

Established in 1996, MI-Flues has grown to become one of the most respected manufacturers of chimney products in the industry, constantly pushing the boundaries of products specification and design, this has led to the introduction of the **TWPro** family of flue products.

**TWPro** has been designed with both the installer and homeowner in mind, dispensing with traditional bulky industrial looking locking bands, it has been rebated into the outer skin to make the overall look of the chimney as streamlined as possible. A wide range of starting components means you can achieve a seamless transition from stove to flue, and coupled with one of the largest ranges of ancillary items of any system, you can be sure to get most professional finish.

## SUPERIOR *design* SUPERIOR *choice*



EN1856-2 T600 N1 W V2 L50040 G50  
EN1856-2 T200 P1 W V2 L50040 020



**TWPro** carries a 25 year warranty\* against manufacturing defects.

(please see our web site for warranty conditions).



# KEY BENEFITS

TWPro is a high quality, multi-fuel, stainless steel twin wall chimney system designed for use with all solid fuel, wood, coal, gas, oil and pellet heating appliances. It is tested to a maximum operating temperature of 600°C and comes with a **25 year warranty**.

TWPro has exceptional thermal properties which have allowed it to be classified as G50. The 50mm clearance required to combustible materials also applies when it is installed in an enclosure. **Enclosed or exposed, always G50 !**

The 25mm high density mineral insulation is injected into the cavity of the chimney under high pressure; this improves the thermal efficiency of the system which in turn helps maintain constant and reliable flue performance.

The TWPro range has the largest selection of starting components of any chimney system available in the U.K. This enables you to complete the installation with the most aesthetically pleasing transition from stove to chimney possible.

Whilst TWPro is available off the shelf in an unrivalled selection of Satin black, White, Grey and Stainless Steel, it can also be powder coated to virtually any RAL colour of your choice. All powder coated finishes are U.V. resistant and therefore perfectly suited to external applications.

Locking bands are included with each component as required; the standard locking band will provide lateral support for up to 1.9 metres of pipe above the final wall support. Structural locking bands are available and allow an additional metre height.

TWPro is suitable for installation on both dry and condensing appliance applications. (Silicone seals are required for condensing appliances).



# INSTALLATION & DESIGN CONSIDERATIONS

When designing the flue system the following points should be considered:-

1. The internal diameter of the flue system should not be less than the size specified by the appliance manufacturer.
2. Ensure that the flue pipe connection from the appliance rises vertically for at least 600mm before any change of direction is contemplated.
3. The minimum height for any solid fuel flue system is recommended to be 4.5m from the top of the appliance.
4. The roof terminal position conforms to requirements defined by Document J of the Building Regulations.
5. If the flue system extends more than 1.9m above the last support, structural locking bands or a roof bracing kit should be used.
6. No more than ONE offset in the chimney (not including the connection to the appliance). The length of the chimney between the elbows MUST NOT exceed 20% of the total vertical length of the chimney.
7. When providing a factory made metal chimney provision should be made to withdraw the appliance without the need to dismantle the chimney.
8. No joint should occur within any floor, ceiling or wall space.
9. The connection to the twin wall system should be in the same room as the appliance.
10. The system should be fully supported along its full length.
11. Provision should be made to inspect and clean the flue.



When installing a TWPro chimney system ensure that the minimum clearance to combustible materials (50mm) is maintained. In attic or loft spaces use a mesh shield to prevent any unintended contact with combustible materials. No additional insulation materials should be placed around the flue pipe.

## Anti-Wind Cowl

2-\*\*\*-091

The cowl prevents unwanted rain penetrating the chimney, it is also designed to help with down draughts.



## Wall Band

15-\*\*-051

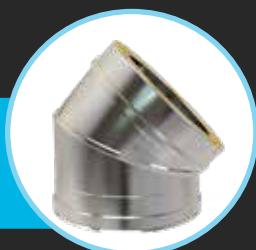
Provides lateral strength to the chimney, should be used every 2.5m.



## 45° Elbow

2-\*\*\*-031

45° Elbows help create an offset to get round the gutter / overhang.



## Finishing Plate Round 45°

2-\*\*\*-107

Fixed to the internal wall will cover any damage made to the wall.



## Finishing Plate Square 30°- 45

15-\*\*\*-097

Fixed to the external wall will keep out water ingress.



## 45° Elbow

30-\*\*\*-031

2 segment 45° elbow..



## Adjustable Connecting Pipe

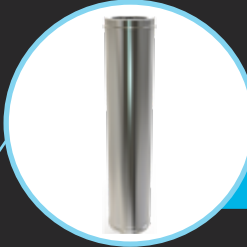
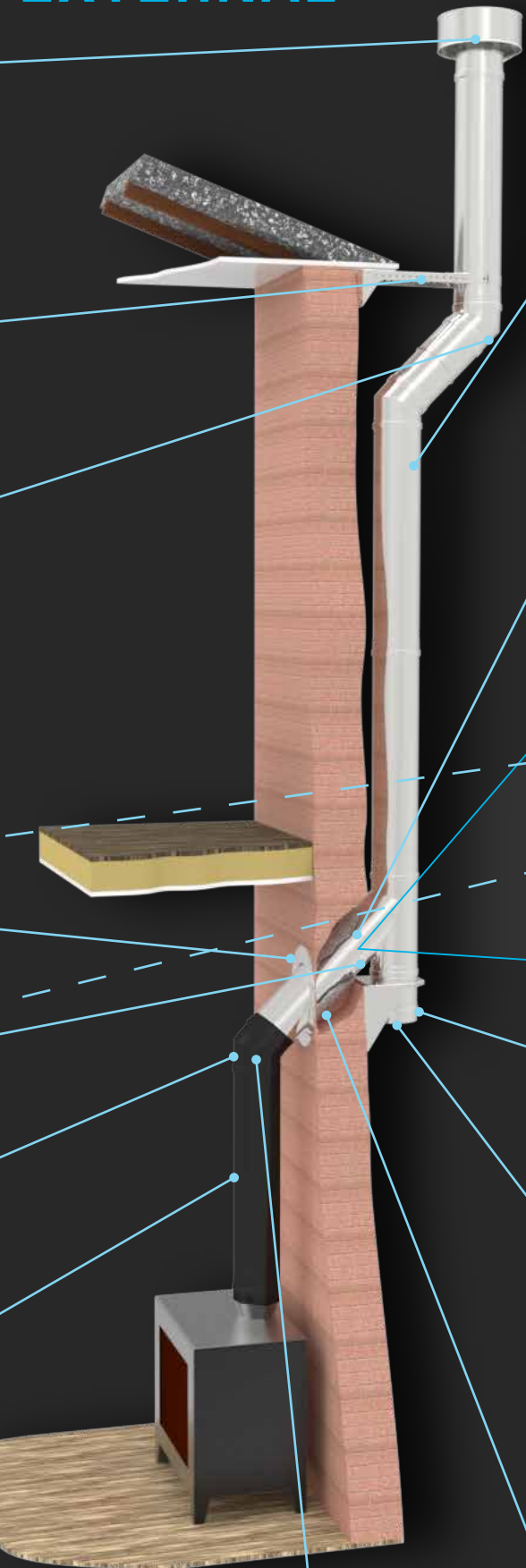
30-\*\*\*-025

Allows the removal of the stove without disturbing the flue system.





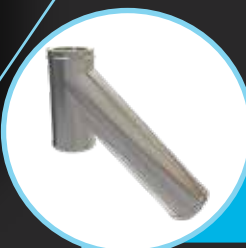
# EXTERNAL



## 1000mm Pipe

2-\*\*\*-010

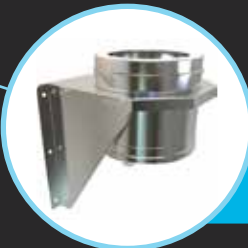
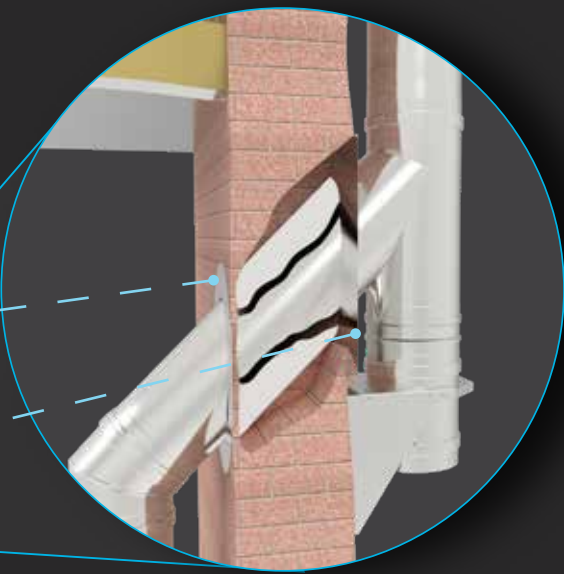
A fixed one metre length of TWPro twin wall insulated pipe.



## Long 135° Tee

2-\*\*\*-044

The Long 135° Tee has an extra long branch that will reach through most standard UK wall constructions.



## Base Support Plate

2-\*\*\*-060

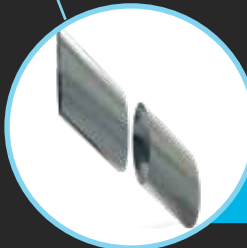
Used to provide vertical support at the base of the external flue.



## Tee Cap

2-\*\*\*-037

Attached to the bottom of the external flue allows for easy sweeping.



## Wall Sleeve - Adjustable 45°

15-\*\*\*-100

Protects the chimney in the wall cavity when the flue system passes to the outside wall. The gap between the flue and the Wall Sleeve can be filled with rockwool.

## CHIMNEY LOWERED OR REMOVED

## FLEX RELINING AND WITH CHIMNEY BEING LOWERED





## Storm Collar

15-\*\*\*-082

Used to ensure water tightness when passing through the roof. It protects the flashing from extreme weather conditions and UV.

## Roof Support

15-\*\*\*-067

Attaches to the rafters in the roof space to help support the chimney.

## HOUSE INTERNAL

## Loft Mesh Kit

13-MESHKIT-\*\*\*

Building Control requirement means that the chimney must not be exposed in a usable loft space.

## Ventilated Fire Stop Plate

2-\*\*\*-073

Provides the correct distance to combustible materials when the chimney passes through a floor.

## Joist Support

15-\*\*\*-068

Used to support the chimney as it passes through the floor.

## Fire Stop Cover Plate

15-\*\*\*-075

Designed to cover the fire stop but still allows air to pass through.

# Introducing the new



The TWPro range of flue products carries a 25 year warranty which covers manufacturing defects. Provided that the system has been correctly installed and used as per the installation instructions. As with all chimney systems it is imperative the flue is swept on an annual basis

by an approved chimney sweep and a signed record of this is maintained. Where solid fuels are burned, these must only be fuels approved and specified by either the solid fuel association or HETAS. The use of any other fuel will invalidate the warranty, as will any evidence of a chimney fire. The powder coated surface of a coloured flue has a 2 year warranty.



# TWPro colour range



## PRODUCT IDENTIFIER KEY

Colour option not available

Product Name

Code

Description

Diameter

### Flat Adaptor to Single Wall

Universal adaptor to connect the appliance outlet to the TWPro, can also connect single wall connecting flue or vitreous enamel to TWPro. This has a flat design to give an instant transition from the appliance or connecting flue to TWPro in the shortest length.

m	Ø 80	Ø 100	Ø 125	Ø 150	Ø 175	Ø 200	Ø 250	Ø 300
●	10-80-005	10-100-005	2-125-005	2-150-005	10-175-005	10-200-005	-	-
○	-	50-100-005	30-125-005	30-150-005	50-175-005	50-200-005	-	-
●	-	-	17-125-005	17-150-005	-	-	-	-
○	-	-	14-125-005	14-150-005	-	-	-	-

Colours

Product Image



Stainless Steel

Black

Grey

White

# ADAPTORS



## Single Wall to Twin Wall Adaptor

Universal adaptor to connect the appliance outlet to the TWPro, can also connect single wall connecting flue or vitreous enamel to TWPro. This has a tapered design to allow a smooth transition from single wall to twin wall.

m	Ø 80	Ø 100	Ø 125	Ø 150	Ø 175	Ø 200	Ø 250	Ø 300
●	10-80-001	10-100-001	2-125-001	2-150-001	10-175-001	10-200-001	60-250-001	60-300-001
○	-	50-100-001	30-125-001	30-150-001	50-175-001	50-200-001	-	-
●	-	-	17-125-001	17-150-001	-	-	-	-
○	-	-	14-125-001	14-150-001	-	-	-	-



## Single Wall to Twin Wall Increaser

Universal adaptor used as a increasing adaptor to connect the appliance outlet to the TWPro, can also connect single wall connecting flue or vitreous enamel to TWPro. This has a tapered design to allow a smooth transition from single wall to twin wall. Increases by a 25mm

m	Ø 80	Ø 100	Ø 125	Ø 150	Ø 175	Ø 200	Ø 250	Ø 300
●	10-80-002	10-100-002	2-125-002	2-150-002	10-175-002	10-200-002	60-250-002	60-300-002
○	-	50-100-002	30-125-002	30-150-002	50-175-002	50-200-002	-	-
●	-	-	17-125-002	17-150-002	-	-	-	-
○	-	-	14-125-002	14-150-002	-	-	-	-



## Boiler Adaptor (Tapered)

Starting adaptor that Fits over the outside of the boiler outlet.

m	Ø 80	Ø 100	Ø 125	Ø 150	Ø 175	Ø 200	Ø 250	Ø 300
●	10-80-003	10-100-003	2-125-003	2-150-003	10-175-003	10-200-003	60-250-003	60-300-003
○	-	-	-	-	-	-	-	-
●	-	-	-	-	-	-	-	-
○	-	-	-	-	-	-	-	-



## Twin Wall to Twin Wall Increaser

Increasing adaptor from TWPro to TWPro, increasing in 25mm increments.

m	Ø 80	Ø 100	Ø 125	Ø 150	Ø 175	Ø 200	Ø 250	Ø 300
●	10-80-004	10-100-004	2-125-004	2-150-004	10-175-004	10-200-004	60-250-004	60-300-004
○	-	50-100-004	30-125-004	30-150-004	50-175-004	50-200-004	-	-
●	-	-	17-125-004	17-150-004	-	-	-	-
○	-	-	14-125-004	14-150-004	-	-	-	-

# ADAPTORS

## Flat Adaptor to Single Wall

Universal adaptor to connect the appliance outlet to the TWPro, can also connect single wall connecting flue or vitreous enamel to TWPro. This has a flat design to give an instant transition from the appliance or connecting flue to TWPro in the shortest length.

m	Ø 80	Ø 100	Ø 125	Ø 150	Ø 175	Ø 200	Ø 250	Ø 300
●	10-80-005	10-100-005	2-125-005	2-150-005	10-175-005	10-200-005	-	-
○	-	50-100-005	30-125-005	30-150-005	50-175-005	50-200-005	-	-
●	-	-	17-125-005	17-150-005	-	-	-	-
●	-	-	14-125-005	14-150-005	-	-	-	-



## Flat Increasing Adaptor

Universal adaptor to connect the appliance outlet to the TWPro, can also connect single wall connecting flue or vitreous enamel to TWPro. This has a tapered design to allow a smooth transition from single wall to twin wall.

m	Ø 80	Ø 100	Ø 125	Ø 150	Ø 175	Ø 200	Ø 250	Ø 300
●	-	10-100-009	2-125-009	-	-	-	-	-
○	-	50-100-009	30-125-009	-	-	-	-	-
●	-	-	17-125-009	-	-	-	-	-
●	-	-	14-125-009	-	-	-	-	-



## Twin Wall to Flex Adaptor

Transitional adaptor from TWPro to MI-Flues multi fuel liner. The adaptor has a screw fix coupling that screw onto the flexible flue liner. This transition must be made inside an existing class 1 Chimney. (no flex should be visible outside the brick or clay chimney.)

m	Ø 80	Ø 100	Ø 125	Ø 150	Ø 175	Ø 200	Ø 250	Ø 300
●	10-80-099	10-100-099	2-125-099	2-150-099	10-175-099	10-200-099	60-250-099	-
○	-	50-100-099	30-125-099	30-150-099	50-175-099	50-200-099	-	-
●	-	-	17-125-099	17-150-099	-	-	-	-
●	-	-	14-125-099	14-150-099	-	-	-	-



## Flex to Twin Wall Adaptor

Transitional adaptor from MI-Flues multi fuel liner to TWPro . The adaptor has a screw fix coupling that screw onto the flexible flue liner. This transition must be made inside an existing class 1 Chimney. (no flex should be visible outside the brick or clay chimney.)

m	Ø 80	Ø 100	Ø 125	Ø 150	Ø 175	Ø 200	Ø 250	Ø 300
●	10-80-101	10-100-101	2-125-101	2-150-101	10-175-101	10-200-101	60-250-101	-
○	-	50-100-101	30-125-101	30-150-101	50-175-101	50-200-101	-	-
●	-	-	17-125-101	17-150-101	-	-	-	-
●	-	-	14-125-101	14-150-101	-	-	-	-





# STARTER PIPES

## Starter Length 1000mm

All in one pipe with built in single wall adaptor, designed to give a more aesthetic clean look when coming directly of the top of an appliance.



m	Ø 80	Ø 100	Ø 125	Ø 150	Ø 175	Ø 200	Ø 250	Ø 300
●	-	10-100-013	2-125-013	2-150-013	10-175-013	10-200-013	-	-
○	-	50-100-013	30-125-013	30-150-013	50-175-013	-	-	-
●	-	-	17-125-013	17-150-013	-	-	-	-
●	-	-	14-125-013	14-150-013	-	-	-	-

## Connecting Pipe Starter Length 1000mm

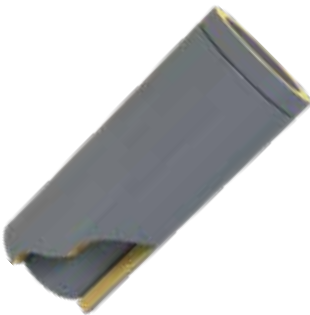
1000mm pipe with a rebated slip joint at the bottom that allows a connecting pipe to slide inside the main pipe allowing adjustment of up to 200mm. This allows pre installation of the chimney system and allows for safe disconnection of the appliance without disturbing the TWPro.



m	Ø 80	Ø 100	Ø 125	Ø 150	Ø 175	Ø 200	Ø 250	Ø 300
●	10-80-021	10-100-021	2-125-021	2-150-021	10-175-021	10-200-021	-	-
○	-	-	-	-	-	-	-	-
●	-	-	-	-	-	-	-	-
●	-	-	-	-	-	-	-	-

## Connecting Pipe Starter Length 500mm

500mm pipe with a rebated slip joint at the bottom that allows a connecting pipe to slide inside the main pipe allowing adjustment of up to 200mm. This allows pre installation of the chimney system and allows for safe disconnection of the appliance without disturbing the TWPro.



m	Ø 80	Ø 100	Ø 125	Ø 150	Ø 175	Ø 200	Ø 250	Ø 300
●	10-80-022	10-100-022	2-125-022	2-150-022	10-175-022	10-200-022	-	-
○	-	-	30-125-021	30-150-021	-	50-200-015	-	-
●	-	-	17-125-021	17-125-021	-	-	-	-
●	-	-	14-125-021	14-125-021	-	-	-	-

# STARTER PIPES

## Adjustable Connecting Pipe 1000mm

1000m pipe with an exposed telescopic connecting pipe built into the male end. This has a cover band and insulation to cover the connecting pipe. This can be used to connect directly on to a heating appliance and allows a clean streamlined finish to a stove installation. The disconnecter section allows for easy removal of the appliance.

m	Ø 80	Ø 100	Ø 125	Ø 150	Ø 175	Ø 200	Ø 250	Ø 300
●	-	-	2-125-025	2-150-025	-	-	-	-
○	-	-	30-125-025	30-150-025	-	-	-	-
●	-	-	17-125-025	17-150-025	-	-	-	-
●	-	-	14-125-025	14-150-025	-	-	-	-



## Adjustable Connecting Pipe 500mm

500m pipe with an exposed telescopic connecting pipe built into the male end. This has a cover band and insulation to cover the connecting pipe. This can be used to connect directly on to a heating appliance and allows a clean streamlined finish to a stove installation. The disconnecter section allows for easy removal of the appliance.

m	Ø 80	Ø 100	Ø 125	Ø 150	Ø 175	Ø 200	Ø 250	Ø 300
●	-	-	2-125-026	2-150-026	-	-	-	-
○	-	-	30-125-026	30-150-026	-	-	-	-
●	-	-	17-125-026	17-150-026	-	-	-	-
●	-	-	14-125-026	14-150-026	-	-	-	-



## Adjustable Connecting Pipe with 45 bend – 500mm

500m pipe with a built in 45 degree bend and a exposed telescopic connecting pipe built into the male end. This has a cover band and insulation to cover the connecting pipe. This can be used to connect directly on to a heating appliance and allows a clean streamlined finish to a stove installation. The disconnecter section allows for easy removal of the appliance.

m	Ø 80	Ø 100	Ø 125	Ø 150	Ø 175	Ø 200	Ø 250	Ø 300
●	-	-	2-125-027	2-150-027	-	-	-	-
○	-	-	30-125-027	30-150-027	-	-	-	-
●	-	-	17-125-027	17-150-027	-	-	-	-
●	-	-	14-125-027	14-150-027	-	-	-	-



# STRAIGHT PIPES



## Pipe 1000mm

Rigid fixed 1000MM pipe effective lengths.

m	Ø 80	Ø 100	Ø 125	Ø 150	Ø 175	Ø 200	Ø 250	Ø 300
10-80-010	10-100-010	2-125-010	2-150-010	10-175-010	10-200-010	60-250-010	60-300-010	
-	50-100-010	30-125-010	30-150-010	50-175-010	50-200-010	-	-	
-	-	17-125-010	17-150-010	-	-	-	-	
-	-	14-125-010	14-150-010	-	-	-	-	



## Pipe 800mm

Rigid fixed 800MM pipe effective lengths

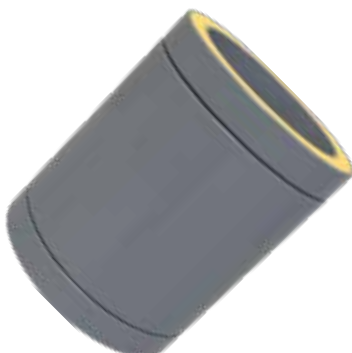
m	Ø 80	Ø 100	Ø 125	Ø 150	Ø 175	Ø 200	Ø 250	Ø 300
-	-	2-125-024	2-150-024	-	-	-	-	-
-	-	-	-	-	-	-	-	-
-	-	-	-	-	-	-	-	-
-	-	-	-	-	-	-	-	-



## Pipe 500mm

Rigid fixed 500MM pipe effective lengths

m	Ø 80	Ø 100	Ø 125	Ø 150	Ø 175	Ø 200	Ø 250	Ø 300
10-80-011	10-100-011	2-125-011	2-150-011	10-175-011	10-200-011	60-250-011	60-300-011	
-	50-100-011	30-125-011	30-150-011	50-175-011	50-200-011	-	-	
-	-	17-125-011	17-150-011	-	-	-	-	
-	-	14-125-011	14-150-011	-	-	-	-	



## Pipe 250mm

Rigid fixed 250MM pipe effective lengths

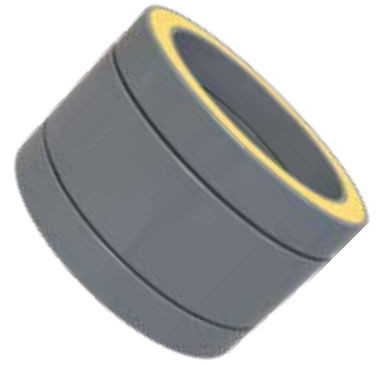
m	Ø 80	Ø 100	Ø 125	Ø 150	Ø 175	Ø 200	Ø 250	Ø 300
10-80-012	10-100-012	2-125-012	2-150-012	10-175-012	10-200-012	60-250-012	60-300-012	
-	50-100-012	30-125-012	30-150-012	50-175-012	50-200-012	-	-	
-	-	17-125-012	17-150-012	-	-	-	-	
-	-	14-125-012	14-150-012	-	-	-	-	

# STRAIGHT PIPES

## Pipe 100mm

Rigid fixed 100MM pipe effective lengths

m	Ø 80	Ø 100	Ø 125	Ø 150	Ø 175	Ø 200	Ø 250	Ø 300
●	10-80-018	10-100-018	2-125-018	2-150-018	10-175-018	10-200-018	60-250-018	60-300-018
○	-	50-100-018	30-125-018	30-150-018	50-175-018	50-200-018	-	-
●	-	-	17-125-018	17-150-018	-	-	-	-
●	-	-	14-125-018	14-150-018	-	-	-	-



## Adjustable Pipe 800-1300mm

Two piece adjustable length with an adjustment range of 800mm to 1300mm. The Pipe come with a body soluble ceramic blanket that is cut down to achieve the desired effective length, secured with a locking band to fix the pipe in place. No screws required.

m	Ø 80	Ø 100	Ø 125	Ø 150	Ø 175	Ø 200	Ø 250	Ø 300
●	-	-	2-125-017	2-150-017	10-175-017	10-200-017	-	-
○	-	-	-	-	-	-	-	-
●	-	-	-	-	-	-	-	-
●	-	-	-	-	-	-	-	-



## Adjustable Pipe 500-880mm

Two piece adjustable length with an adjustment range of 500mm to 880mm. The Pipe come with a body soluble ceramic blanket that is cut down to achieve the desired effective length, secured with a locking band to fix the pipe in place. No screws required.

m	Ø 80	Ø 100	Ø 125	Ø 150	Ø 175	Ø 200	Ø 250	Ø 300
●	-	10-100-014	2-125-014	2-150-014	10-175-014	10-200-014	60-250-014	60-300-014
○	-	50-100-014	30-125-014	30-150-014	50-175-014	50-200-014	-	-
●	-	-	17-125-014	17-150-014	-	-	-	-
●	-	-	14-125-014	14-150-014	-	-	-	-



## Adjustable Pipe 350-500mm

Two piece adjustable length with an adjustment range of 350mm to 500mm. The Pipe come with a body soluble ceramic blanket that is cut down to achieve the desired effective length, secured with a locking band to fix the pipe in place. No screws required.

m	Ø 80	Ø 100	Ø 125	Ø 150	Ø 175	Ø 200	Ø 250	Ø 300
●	10-80-015	10-100-015	2-125-015	2-150-015	10-175-015	10-200-015	60-250-015	60-300-015
○	-	50-100-015	30-125-015	30-150-015	50-175-015	-	-	-
●	-	-	17-125-015	17-150-015	-	-	-	-
●	-	-	14-125-015	14-150-015	-	-	-	-



# STRAIGHT PIPES



## Adjustable Pipe 250-350mm

Two piece adjustable length with an adjustment range of 250mm to 350mm. The Pipe come with a body soluble ceramic blanket that is cut down to achieve the desired effective length, secured with a locking band to fix the pipe in place. No screws required.

m	Ø 80	Ø 100	Ø 125	Ø 150	Ø 175	Ø 200	Ø 250	Ø 300
●	10-80-016	10-100-016	2-125-016	2-150-016	10-175-016	10-200-016	60-250-016	60-300-016
○	-	50-100-016	30-125-016	30-150-016	50-175-016	-	-	-
●	-	-	17-125-016	17-150-016	-	-	-	-
●	-	-	14-125-016	14-150-016	-	-	-	-



## Testing Length 500mm

500mm length with a test point and cap built in to the pipe, this allows safe entry point into the flue way for testing gas and draft samples.

m	Ø 80	Ø 100	Ø 125	Ø 150	Ø 175	Ø 200	Ø 250	Ø 300
●	10-80-019	10-100-019	2-125-019	2-150-019	10-175-019	10-200-019	60-250-019	60-300-019
○	-	-	-	-	-	-	-	-
●	-	-	-	-	-	-	-	-
●	-	-	-	-	-	-	-	-



## Inspection Length 500mm

Sweeping access built into a 500mm pipe, includes a locking door with a large rectangular sweeping point. This is a N1 pressure product

m	Ø 80	Ø 100	Ø 125	Ø 150	Ø 175	Ø 200	Ø 250	Ø 300
●	-	-	2-125-020	2-150-020	-	10-200-020	-	-
○	-	-	-	-	-	-	-	-
●	-	-	-	-	-	-	-	-
●	-	-	-	-	-	-	-	-



## Pipe 500mm DOOR (non-condensing)

Sweeping access built into a 500mm pipe, the pipe has an inner door and outer cover door allowing direct sweeping access to the inner flue way with easy access using locking clamps. This is a N1 pressure product.

m	Ø 80	Ø 100	Ø 125	Ø 150	Ø 175	Ø 200	Ø 250	Ø 300
●	-	-	2-125-023	2-150-023	10-175-023	10-200-023	-	-
○	-	-	-	-	-	-	-	-
●	-	-	-	-	-	-	-	-
●	-	-	-	-	-	-	-	-



# ELBOWS AND TEES

## 90° Bend

3 segment 90 degree bend, for offset details see table on page 40

m	Ø 80	Ø 100	Ø 125	Ø 150	Ø 175	Ø 200	Ø 250	Ø 300
●	10-80-030	10-100-030	2-125-030	2-150-030	10-175-030	10-200-030	60-250-030	60-300-030
○	-	50-100-030	30-125-030	30-150-030	50-175-030	50-200-030	-	-
●	-	-	17-125-030	17-150-030	-	-	-	-
●	-	-	14-125-030	14-150-030	-	-	-	-



## 87° Bend

3 segment 87 degree bend, for offset details see table on page 40

m	Ø 80	Ø 100	Ø 125	Ø 150	Ø 175	Ø 200	Ø 250	Ø 300
●	10-80-038	10-100-038	2-125-038	2-150-038	10-175-038	10-200-038	60-250-038	60-300-038
○	-	50-100-038	30-125-038	30-150-038	50-175-038	50-200-038	-	-
●	-	-	-	-	-	-	-	-
●	-	-	-	-	-	-	-	-



## 45° Bend

2 segment 45 degree bend, for offset details see table on page 40

m	Ø 80	Ø 100	Ø 125	Ø 150	Ø 175	Ø 200	Ø 250	Ø 300
●	10-80-031	10-100-031	2-125-031	2-150-031	10-175-031	10-200-031	60-250-031	60-300-031
○	-	50-100-031	30-125-031	30-150-031	50-175-031	50-200-031	-	-
●	-	-	17-125-031	17-150-031	-	-	-	-
●	-	-	14-125-031	14-150-031	-	-	-	-



## 30° Bend

2 segment 30 degree bend, for offset details see table on page 40

m	Ø 80	Ø 100	Ø 125	Ø 150	Ø 175	Ø 200	Ø 250	Ø 300
●	10-80-032	10-100-032	2-125-032	2-150-032	10-175-032	10-200-032	60-250-032	60-300-032
○	-	50-100-032	30-125-032	30-150-032	50-175-032	50-200-032	-	-
●	-	-	17-125-032	17-150-032	-	-	-	-
●	-	-	14-125-032	14-150-032	-	-	-	-



# ELBOWS AND TEES



## 15° Bend

2 segment 15 degree bend, for offset details see table on page 40

m	Ø 80	Ø 100	Ø 125	Ø 150	Ø 175	Ø 200	Ø 250	Ø 300
●	10-80-033	10-100-033	2-125-033	2-150-033	10-175-033	10-200-033	60-250-033	60-300-033
○	-	50-100-033	30-125-033	30-150-033	50-175-033	50-200-033	-	-
●	-	-	17-125-033	17-150-033	-	-	-	-
●	-	-	14-125-033	14-150-033	-	-	-	-



## 90° Bend Inspection

90 degree bend with a fully condensing P1 access plug (with seals), this allows full inspection on 90 deg changes of direction allowing sweeping in 2 directions.

m	Ø 80	Ø 100	Ø 125	Ø 150	Ø 175	Ø 200	Ø 250	Ø 300
●	-	10-100-042	2-125-042	2-150-042	10-175-042	10-200-042	60-250-042	60-300-042
○	-	-	-	-	-	-	-	-
●	-	-	-	-	-	-	-	-
●	-	-	-	-	-	-	-	-



## 135° Tee

The 135° Tee is used when you need a cleaning access at the base of the chimney. It is the first piece installed on the external wall and allows for ease cleaning of the flue. The 135° Tee is shaped in such away that it does not restrict the flue gases.

m	Ø 80	Ø 100	Ø 125	Ø 150	Ø 175	Ø 200	Ø 250	Ø 300
●	10-80-034	10-100-034	2-125-034	2-150-034	10-175-034	10-200-034	60-250-034	60-300-034
○	-	50-100-034	30-125-034	30-150-034	50-175-034	50-200-034	-	-
●	-	-	17-125-034	17-150-034	-	-	-	-
●	-	-	14-125-034	14-150-034	-	-	-	-



## LONG 135° Tee

The Long 135° Tee is used when you need a cleaning access at the base of the chimney. It is the first piece installed on the external wall and allows for ease cleaning of the flue. The 135° Tee is shaped in such away that it does not restrict the flue gases, it has a extra-long branch that will reach through most standard UK wall constructions.

m	Ø 80	Ø 100	Ø 125	Ø 150	Ø 175	Ø 200	Ø 250	Ø 300
●	10-80-044	10-100-044	2-125-044	2-150-044	10-175-044	10-200-044	-	-
○	-	50-100-044	30-125-044	30-150-044	50-175-044	50-200-044	-	-
●	-	-	17-125-044	17-150-044	-	-	-	-
●	-	-	14-125-044	14-150-044	-	-	-	-

# ELBOWS AND TEES

## 90° Tee

The 90° Tee is usually installed when you are connecting the flue to the rear outlet of an appliance.

m	Ø 80	Ø 100	Ø 125	Ø 150	Ø 175	Ø 200	Ø 250	Ø 300
●	10-80-035	10-100-035	2-125-035	2-150-035	10-175-035	10-200-035	60-250-035	60-300-035
○	-	50-100-035	30-125-035	30-150-035	50-175-035	50-200-035	-	-
●	-	-	17-125-035	17-150-035	-	-	-	-
●	-	-	14-125-035	14-150-035	-	-	-	-



## Long 90° Tee

The 90° Tee is usually installed when you are connecting the flue to the rear outlet of an appliance. This tee has a 450mm branch that allows the tee to be insulated directly onto the back of a wood burning stove passing through a standard brick wall.

m	Ø 80	Ø 100	Ø 125	Ø 150	Ø 175	Ø 200	Ø 250	Ø 300
●	-	-	2-125-045	2-150-045	-	-	-	-
○	-	-	30-125-045	30-150-045	-	-	-	-
●	-	-	-	-	-	-	-	-
●	-	-	-	-	-	-	-	-



## 93° Tee

The 93° Tee is usually installed in conjunction with a fully condensing boiler to allow a 3 degree fall back to the boiler or condense collector to remove water created in the flue way.

m	Ø 80	Ø 100	Ø 125	Ø 150	Ø 175	Ø 200	Ø 250	Ø 300
●	10-80-039	10-100-039	2-125-039	2-150-039	10-175-039	10-200-039	60-250-039	60-300-039
○	-	50-100-039	30-125-039	30-150-039	50-175-039	50-200-039	-	-
●	-	-	-	-	-	-	-	-
●	-	-	-	-	-	-	-	-



## 90° Reducing Tee

Used when creating cascade header systems when it is required to join multiple boilers. The branch diameter is available in multiple sizes.

m	Ø 80	Ø 100	Ø 125	Ø 150	Ø 175	Ø 200	Ø 250	Ø 300
●	10-80-040	10-100-040	2-125-040	2-150-040	10-175-040	10-200-040	60-250-040	60-300-040
○	-	-	-	-	-	-	-	-
●	-	-	-	-	-	-	-	-
●	-	-	-	-	-	-	-	-



# ELBOWS AND TEES



## Tee Cap cw Drain

Used to cap off the bottom or unused end of a 90/135 tee, this is usually fitted to the bottom of a base support to allow easy removal for sweeping and access, this part includes a 10mm threaded drain to allow the connection of a drain pipe to carry away excess condense from the flue system.

m	Ø 80	Ø 100	Ø 125	Ø 150	Ø 175	Ø 200	Ø 250	Ø 300
●	10-80-037	10-100-037	2-125-037	2-150-037	10-175-037	10-200-037	60-250-037	60-300-037
○	-	50-100-037	CC-125-037	CC-150-037	50-175-037	50-200-037	-	-
●	-	-	CC-125-037	CC-150-037	-	-	-	-
○	-	-	CC-125-037	CC-150-037	-	-	-	-



## Tee Cap

Used to cap off the bottom or unused end of a 90/135 tee, this is usually fitted to the bottom of a base support to allow easy removal for sweeping and access.

m	Ø 80	Ø 100	Ø 125	Ø 150	Ø 175	Ø 200	Ø 250	Ø 300
●	10-80-036	10-100-036	2-125-036	2-150-036	10-175-036	10-200-036	60-250-036	60-300-036
○	-	50-100-036	30-125-036	30-150-036	50-175-036	50-200-036	-	-
●	-	-	17-125-036	17-150-036	-	-	-	-
○	-	-	14-125-036	14-150-036	-	-	-	-

# SUPPORTS

## Locking Band

The Locking Band is used to secure two parts of the flue together. A Locking Band is required at every joint.

m	Ø 80	Ø 100	Ø 125	Ø 150	Ø 175	Ø 200	Ø 250	Ø 300
●	10-80-050	10-100-050	2-125-050	2-150-050	10-175-050	10-200-050	60-250-050	60-300-050
○	-	50-100-050	30/55-125-050	30/55-150-050	50-175-050	50-200-050	-	-
●	-	-	17/56-125-050	17/56-150-050	-	-	-	-
●	-	-	14/54-125-050	14/54-150-050	-	-	-	-



## Wall Band 50-80mm

Adjustable wall bracket to secure the flue to the wall. Adjustable between 50mm and 80mm. Offers lateral support only. Use every 2500 mm.

m	Ø 80	Ø 100	Ø 125	Ø 150	Ø 175	Ø 200	Ø 250	Ø 300
●	15-80-051	15-100-051	15-125-051	15-150-051	15-175-051	15-200-051	65-250-051	65-300-051
○	-	55-100-051	30/55-125-051	30/55-150-051	55-175-051	55-200-051	-	-
●	-	-	17/56-125-051	17/56-150-051	-	-	-	-
●	-	-	14/54-125-051	14/54-150-051	-	-	-	-



## Wall Band 80-130mm

Wall support are to be used for lateral support only and should be use a minimum of every 3 meters. Only recommended fixings should be used to fit the wall support to the building surface. This wall band allows you to set a distance of 80mm (minimum) and 130mm (maximum) adjustment from the wall surface allowing a 50mm adjustment.

m	Ø 80	Ø 100	Ø 125	Ø 150	Ø 175	Ø 200	Ø 250	Ø 300
●	15-80-052	15-100-052	15-125-052	15-150-052	15-175-052	15-200-052	65-250-052	65-300-052
○	-	-	-	-	-	-	-	-
●	-	-	-	-	-	-	-	-
●	-	-	-	-	-	-	-	-



## Wall Band 130-210mm

Wall support are to be used for lateral support only and should be use a minimum of every 3 meters. Only recommended fixings should be used to fit the wall support to the building surface. This wall band allows you to set a distance of 130mm (minimum) and 210mm (maximum) adjustment from the wall surface allowing a 80mm adjustment.

m	Ø 80	Ø 100	Ø 125	Ø 150	Ø 175	Ø 200	Ø 250	Ø 300
●	15-80-053	15-100-053	15-125-053	15-150-053	15-175-053	15-200-053	65-250-053	65-300-053
○	-	-	-	-	-	-	-	-
●	-	-	-	-	-	-	-	-
●	-	-	-	-	-	-	-	-





# SUPPORTS



## Wall Band 210-420mm

Wall support are to be used for lateral support only and should be use a minimum of every 3 meters. Only recommended fixings should be used to fit the wall support to the building surface. This wall band allows you to set a distance of 80mm (minimum) and 420mm (maximum) adjustment from the wall surface allowing a 340mm adjustment. This wall support has to be manually cut down to achieve the desired effective length.

m	Ø 80	Ø 100	Ø 125	Ø 150	Ø 175	Ø 200	Ø 250	Ø 300
●	15-80-055	15-100-055	15-125-055	15-150-055	15-175-055	15-200-055	65-250-055	65-300-055
○	-	55-100-055	30/55-125-055	30/55-150-055	55-175-055	55-200-055	-	-
●	-	-	17/56-125-055	17/56-150-055	-	-	-	-
○	-	-	14/54-125-055	14/54-150-055	-	-	-	-



## Structural Locking Band

The Structural Locking Band replaces the standard locking band where an unsupported length of up to 2.9 meters is required. These should be used on each joint above and the joint below the final wall support.

m	Ø 80	Ø 100	Ø 125	Ø 150	Ø 175	Ø 200	Ø 250	Ø 300
●	10-80-054	10-100-054	2-125-054	2-150-054	10-175-054	10-200-054	60-250-054	60-300-054
○	-	50-100-054	50-125-054	50-150-054	50-175-054	50-200-054	-	-
●	-	-	17-125-054	17-150-054	-	-	-	-
○	-	-	14-125-054	14-150-054	-	-	-	-



## Adjustable Base Support

Adjustable Base Supports are used internally or externally to provide vertical support to the chimney. This support has a small levelling adjustment of 50mm to 80mm from the wall surface. See page 38 for loading data.

Only recommended fixings should be used to fit this base support to the building surface.

m	Ø 80	Ø 100	Ø 125	Ø 150	Ø 175	Ø 200	Ø 250	Ø 300
●	10-80-060	10-100-060	2-125-060	2-150-060	10-175-060	10-200-060	60-250-060	60-300-060
○	-	50-100-060	50-125-060	50-150-060	50-175-060	50-200-060	-	-
●	-	-	17-125-060	17-150-060	-	-	-	-
○	-	-	14-150-060	14-150-060	-	-	-	-



## Adjustable Base Support 80-280mm

Adjustable Base Supports are used internally or externally to provide vertical support to the chimney. This support has an adjustment of 80mm to 280mm from the wall surface. See page 38 for loading data.

Only recommended fixings should be used to fit this base support to the building surface.

m	Ø 80	Ø 100	Ø 125	Ø 150	Ø 175	Ø 200	Ø 250	Ø 300
●	10-80-063	10-100-063	2-125-063	2-150-063	10-175-063	10-200-063	60-250-063	60-300-063
○	-	50-100-063	30-125-063	30-150-063	50-175-063	50-200-063	-	-
●	-	-	-	-	-	-	-	-
○	-	-	-	-	-	-	-	-

# SUPPORTS

## Console Plate

Console Plates can be used as a load bearing support in conjunction with 3rd party fixings. See page 41 for loading data.

m	Ø 80	Ø 100	Ø 125	Ø 150	Ø 175	Ø 200	Ø 250	Ø 300
●	10-80-061	10-100-061	2-125-061	2-150-061	10-175-061	10-200-061	60-250-061	60-300-061
○	-	50-100-061	50-125-061	50-150-061	50-175-061	50-200-061	-	-
●	-	-	17-125-061	17-150-061	-	-	-	-
●	-	-	14-125-061	14-150-061	-	-	-	-



## Chest Mounting Plate

Transitional plate that converts MI-Flex flue liner to TWPro, the component is designed to be fixed onto the top of a lowered chimney stack. Please note the transition from flex to TWPro must be made in side the existing class 1 chimney stack. See page 41 for loading data.

m	Ø 80	Ø 100	Ø 125	Ø 150	Ø 175	Ø 200	Ø 250	Ø 300
●	-	10-100-062	2-125-062	2-150-062	10-175-062	10-200-062	-	-
○	-	50-100-062	50-125-062	50-150-062	50-175-062	50-200-062	-	-
●	-	-	17-125-062	17-150-062	-	-	-	-
●	-	-	14-125-062	14-150-062	-	-	-	-



## Roof Support

The Roof Support will rotate on 2 screws so that the flue can be installed vertically through the roof. The Roof Support is attached to the rafters in the roof space, allowing a fixed support before the TWPro leaves the structure of the building. See loading data on page 41

m	Ø 80	Ø 100	Ø 125	Ø 150	Ø 175	Ø 200	Ø 250	Ø 300
●	15-80-067	15-100-067	15-125-067	15-150-067	15-175-067	15-200-067	65-250-067	65-300-067
○	-	55-100-067	30/55-125-067	30/55-150-067	55-175-067	55-200-067	-	-
●	-	-	17/56-125-067	17/56-150-067	-	-	-	-
●	-	-	14/54-125-067	14/54-150-067	-	-	-	-



## Long Roof Support

The Roof Support will rotate on 2 screws so that the flue can be installed vertically through the roof. The Roof Support is attached to the rafters in the roof space, allowing a fixed support before the TWPro leaves the structure of the building. See loading data on 41

m	Ø 80	Ø 100	Ø 125	Ø 150	Ø 175	Ø 200	Ø 250	Ø 300
●	15-80-066	15-100-066	15-125-066	15-150-066	15-175-066	15-200-066	65-250-066	65-300-066
○	-	-	-	-	-	-	-	-
●	-	-	-	-	-	-	-	-
●	-	-	-	-	-	-	-	-



# SUPPORTS



## Joist Support

Joist supports are used to support the chimney as it is passing through floor joists. The joist support is used in conjunction with fire stop plates and is fixed on the upper floor section spanning the floor joist allowing even weight distribution. See loading data on 41

m	Ø 80	Ø 100	Ø 125	Ø 150	Ø 175	Ø 200	Ø 250	Ø 300
●	15-80-068	15-100-068	15-125-068	15-150-068	15-175-068	15-200-068	65-250-068	65-300-068
○	-	55-100-068	30/55-125-068	30/55-150-068	55-175-068	55-200-068	-	-
●	-	-	17/56-125-068	17/56-150-068	-	-	-	-
○	-	-	14/54-125-068	14/54-150-068	-	-	-	-



## Guy Wire Bracket

This component is used to secure unsupported chimney sections above 1.5m of the roof level, an extra 1.5m can be achieved in conjunction with the guy wire kit.

m	Ø 80	Ø 100	Ø 125	Ø 150	Ø 175	Ø 200	Ø 250	Ø 300
●	15-80-069	15-100-069	15-125-069	15-150-069	15-175-069	15-200-069	65-250-069	65-300-069
○	-	55-100-069	30/55-125-069	30/55-150-069	55-175-069	55-200-069	-	-
●	-	-	17/56-125-069	17/56-150-069	-	-	-	-
○	-	-	14/54-125-069	14/54-150-069	-	-	-	-



## Guy Wire Kit 30m complete kit

The Stove-Care Guy Wire Kit is the ideal solution to support a high or unsteady chimney. All parts made from rustproof galvanised steel, the kit contains enough parts to make THREE 10m long supporting wires, must be used in conjunction with the 069 guy wire bracket. Please note secure roof anchor points are essential.

m	Ø 80	Ø 100	Ø 125	Ø 150	Ø 175	Ø 200	Ø 250	Ø 300
●	92-GW30	92-GW30	92-GW30	92-GW30	92-GW30	92-GW30	92-GW30	92-GW30



## Roof Brace Kit

A Roof Brace Kit can be used whenever there is a need to stabilise the chimney above the roof level. The roof brace kit must be used if the chimney extends 1.5 + metres above the roof. The arms can be adjusted from 1.5 metres to 2.9 metres in length.

m	Ø 80	Ø 100	Ø 125	Ø 150	Ø 175	Ø 200	Ø 250	Ø 300
●	15-80-123	15-100-123	15-125-123	15-150-123	15-175-123	15-200-123	65-250-123	-

# FIRE STOPS

## Firestop Plate Non-Ventilated (Gas and Oil)

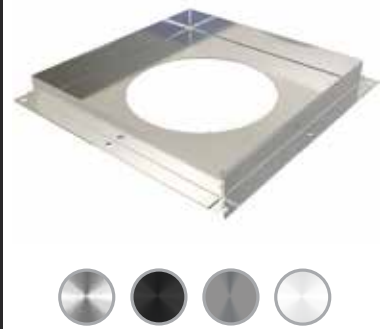
A Firestop plate is used to allow the chimney to pass between floors, for example, when you need the chimney to go through the ceiling on the ground floor through to the first floor. The steel plate is designed to provide the appropriate distance between the flue and the adjacent flammable materials, according to both fire and building regulations. A plate must be used top and bottom of the floor penetration.

A Non-Ventilated Firestop plate can only be used on installations burning gas or oil. T200

For T600 Solid fuel installations ventilated plates must be used.

All TWPro fire stops are set at a 50mm to combustible distance.

m	Ø 80	Ø 100	Ø 125	Ø 150	Ø 175	Ø 200	Ø 250	Ø 300
●	10-80-070	10-100-070	2-125-070	2-150-070	10-175-070	10-200-070	60-250-070	60-300-070
○	-	50-100-070	30-125-070	30-150-070	50-175-070	50-200-070	-	-
●	-	-	17-125-070	17-150-070	-	-	-	-
○	-	-	14-125-070	14-150-070	-	-	-	-



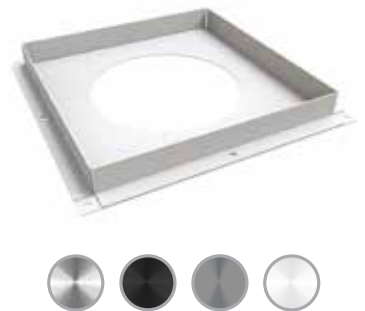
## Ventilated Firestop Plate

A Firestop plate is used to allow the chimney to pass between floors, for example, when you need the chimney to go through the ceiling on the ground floor through to the first floor. The steel plate is designed to provide the appropriate distance between the flue and the adjacent flammable materials, according to both fire and building regulations. A plate must be used top and bottom of the floor penetration.

A Ventilated Firestop plate can be used on installations burning all fuels. T600

All TWPro fire stops are set at a 50mm to combustible distance.

m	Ø 80	Ø 100	Ø 125	Ø 150	Ø 175	Ø 200	Ø 250	Ø 300
●	10-80-073	10-100-073	2-125-073	2-150-073	10-175-073	10-200-073	-	-
○	-	50-100-073	30-125-073	30-150-073	50-175-073	50-200-073	-	-
●	-	-	17-125-073	17-150-073	-	-	-	-
○	-	-	14-125-073	14-150-073	-	-	-	-

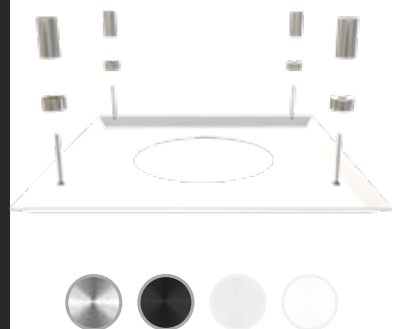


## Firestop Cover Plate

The Firestop Cover Plate is used to cover an existing Firestop Plate.

It gives the installation a pleasing finish, while still allowing enough air into the chamber without compromising the use of the Firestop Plate. It is attached to the underside of the Firestop Plate using magnets and spacers. It is important to use these spacers to allow the correct amount of air into the chamber.

m	Ø 80	Ø 100	Ø 125	Ø 150	Ø 175	Ø 200	Ø 250	Ø 300
●	15-80-075	15-100-075	15-125-075	15-150-075	15-175-075	15-200-075	65-250-075	65-300-075
○	-	55-100-075	55-125-075	55-150-075	55-175-075	55-200-075	-	-
●	-	-	-	-	-	-	-	-
○	-	-	-	-	-	-	-	-

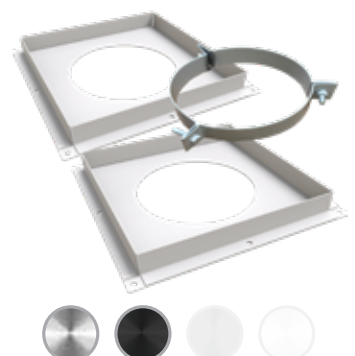


## Ventilated Firestop Support Kit

This kit comprises of 2 ventilated fire stops and a support clamp that can be used as a complete kit on a T600 All fuels firestop installation.

Please note this installation allows 3 meters of vertical support.

m	Ø 80	Ø 100	Ø 125	Ø 150	Ø 175	Ø 200	Ø 250	Ø 300
●	-	-	2-125-077	2-150-077	-	-	-	-
○	-	-	30-125-077	30-150-077	-	-	-	-
●	-	-	-	-	-	-	-	-
○	-	-	-	-	-	-	-	-



# FLASHINGS



## MasterFLASH Residential Tile Slate / High Temp.

Suitable for tiled roofs and is temperature resistance -74°C to 260°C  
Environmentally safe lead free aluminium base. The SILICONE rubber upstand has a 20 year life. The built in 20° pitch allows adaptability to almost any roof pitch including 45°. The pull tab design and easy smooth tear grooving is intended to eliminate cutting by knife and allow for a circular hole.

m	Ø 80	Ø 100	Ø 125	Ø 150	Ø 175	Ø 200	Ø 250	Ø 300
●	12-101RESHT	12-101RESHT	12-201RESHT	12-201RESHT	12-201RESHT	-	12-301RESHT	12-301RESHT
○	-	-	-	-	-	-	-	-
●	-	-	-	-	-	-	-	-
●	-	-	-	-	-	-	-	-



## MasterFLASH Metal Roofs / Low Temp.

Suitable for profiled sheeting and flat panel surfaces and is temperature resistance -55°C to 135°C.  
Made of EPDM, these flashings are compounded specifically for maximum resistance to weathering due to ozone and ultraviolet light.

The one piece construction allows for quick and easy on-site installation - usually taking no longer than five minutes.

The base is designed to form a seal on most panel configurations and roof pitches regardless of pipe location.

m	Ø 80	Ø 100	Ø 125	Ø 150	Ø 175	Ø 200	Ø 250	Ø 300
●	12-301	12-501	12-601	12-701	12-701	12-801	12-901	12-901
○	-	-	-	-	-	-	-	-
●	-	-	-	-	-	-	-	-
●	-	-	-	-	-	-	-	-



## MasterFLASH Metal Roofs / High Temp.

Suitable for profiled sheeting and flat panel surfaces and is temperature resistance -74°C to 260°C  
Made of SILICONE, these flashings are compounded specifically for maximum resistance to weathering due to ozone and ultraviolet light.

The one piece construction allows for quick and easy on-site installation - usually taking no longer than five minutes.

The base is designed to form a seal on most panel configurations and roof pitches regardless of pipe location.

m	Ø 80	Ø 100	Ø 125	Ø 150	Ø 175	Ø 200	Ø 250	Ø 300
●	12-302	12-502	12-602	12-702	12-702	12-802	12-902	12-902
○	-	-	-	-	-	-	-	-
●	-	-	-	-	-	-	-	-
●	-	-	-	-	-	-	-	-



## Storm Collar

Used to ensure water tightness in the passage through the roof. It also protects the flashing from extreme weather conditions. It should be installed about 25mm above the tallest part of the flashing. Once secure run a bead of silicone around the top edge and the flue to complete the water-tightness.

m	Ø 80	Ø 100	Ø 125	Ø 150	Ø 175	Ø 200	Ø 250	Ø 300
●	15-80-082	15-100-082	15-125-082	15-150-082	15-175-082	15-200-082	65-250-082	65-300-082
○	-	55-100-082	30/55-125-082	30/55-150-082	55-175-082	55-200-082	-	-
●	-	-	17/56-125-082	17/56-150-082	-	-	-	-
●	-	-	14/54-125-082	14/54-150-082	-	-	-	-



# FLASHINGS

## Lead Flashing Roof Pitch 0° to 35°

Code 4 Lead flashing suitable for tiled and slate roofs.

m	Ø 80	Ø 100	Ø 125	Ø 150	Ø 175	Ø 200	Ø 250	Ø 300
●	-	-	12-125-TWLS35	12-150-TWLS35	12-180-TWLS35	12-200-TWLS35	12-250-TWLS35	-
○	-	-	-	-	-	-	-	-
●	-	-	-	-	-	-	-	-
○	-	-	-	-	-	-	-	-



## Lead Flashing Roof Pitch 36° to 45°

Code 4 Lead flashing suitable for tiled and slate roofs.

m	Ø 80	Ø 100	Ø 125	Ø 150	Ø 175	Ø 200	Ø 250	Ø 300
●	-	-	12-125-TWLS45	12-150-TWLS45	12-180-TWLS45	12-200-TWLS45	12-250-TWLS45	-
○	-	-	-	-	-	-	-	-
●	-	-	-	-	-	-	-	-
○	-	-	-	-	-	-	-	-



## Seldek Aluminium Tile Slate / Low Temp.

Seldek Aluminium - installs in a flash on Tile or Slate Roofs.  
The SELDEK Aluminium will not stain or corrode roofs and gutters. The EPDM cone, which is trimmed on site to fit, is ingeniously locked to a high grade and malleable aluminium base.

m	Ø 80	Ø 100	Ø 125	Ø 150	Ø 175	Ø 200	Ø 250	Ø 300
●	12-SD101	12-SD101	12-SD102	12-SD102	12-SD103	12-SD103	12-SD104	12-SD104
○	-	-	-	-	-	-	-	-
●	-	-	-	-	-	-	-	-
○	-	-	-	-	-	-	-	-



## MasterFlash Residential Tile Slate / Low Temp.

Suitable for tiled roofs and is temperature resistance -55°C to 135°C  
Environmentally safe lead free aluminium base. The EPDM rubber upstand has a 20 year life.  
The built in 20° pitch allows adaptability to almost any roof pitch including 45°. The pull tab design and easy smooth tear grooving is intended to eliminate cutting by knife and allow for a circular hole.

m	Ø 80	Ø 100	Ø 125	Ø 150	Ø 175	Ø 200	Ø 250	Ø 300
●	12-101RES	12-101RES	12-201RES	12-201RES	12-201RES	-	12-301RES	12-301RES
○	-	-	-	-	-	-	-	-
●	-	-	-	-	-	-	-	-
○	-	-	-	-	-	-	-	-



# FINISHING PLATES



## Round Finishing Plate 45° (1 Piece)

The Round Finishing Plate comes in one complete part and is used to tidy the area around the flue as it passes through a wall. This plate is attached to the wall where the flue is passing through at 45°. Use silicone and screws to secure against the wall.

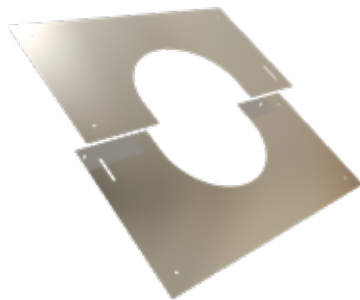
m	Ø 80	Ø 100	Ø 125	Ø 150	Ø 175	Ø 200	Ø 250	Ø 300
●	15-80-113	15-100-113	15-125-113	15-150-113	15-175-113	15-200-113	65-250-113	65-300-113
○	-	55-100-113	30/55-125-113	30/55-150-113	55-175-113	55-200-113	-	-
●	-	-	17/56-125-113	17/56-150-113	-	-	-	-
○	-	-	14/54-125-113	14/54-150-113	-	-	-	-



## Round Finishing Plate 90° (1 Piece)

The Round Finishing Plate comes in one complete part and is used to tidy the area around the flue as it passes through a wall. This plate is attached to the wall where the flue is passing through at 90°. Use silicone and screws to secure against the wall.

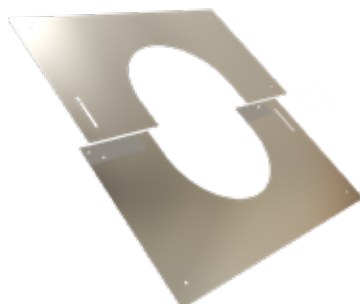
m	Ø 80	Ø 100	Ø 125	Ø 150	Ø 175	Ø 200	Ø 250	Ø 300
●	15-80-114	15-100-114	15-125-114	15-150-114	15-175-114	15-200-114	65-250-114	65-300-114
○	-	55-100-114	30/55-125-114	30/55-150-114	55-175-114	55-200-114	-	-
●	-	-	17/56-125-114	17/56-150-114	-	-	-	-
○	-	-	14/54-125-114	14/54-150-114	-	-	-	-



## Adjustable Finishing Plate Square 0°- 30°

The Finishing Plate comes in two parts and is used to tidy the area around the flue as it passes through a non-combustible wall. This plate is attached to the wall where the flue is passing through between 90° and 60°. Use silicone and screws to secure against the wall.

m	Ø 80	Ø 100	Ø 125	Ø 150	Ø 175	Ø 200	Ø 250	Ø 300
●	15-80-096	15-100-096	15-125-096	15-150-096	15-175-096	15-200-096	65-250-096	65-300-096
○	-	55-100-096	55-125-096	55-150-096	55-175-096	55-200-096	-	-
●	-	-	-	-	-	-	-	-
○	-	-	-	-	-	-	-	-



## Adjustable Finishing Plate Square 30°- 45°

The Finishing Plate comes in two parts and is used to tidy the area around the flue as it passes through a non-combustible wall. This plate is attached to the wall where the flue is passing through between 45° and 60°. Use silicone and screws to secure against the wall.

m	Ø 80	Ø 100	Ø 125	Ø 150	Ø 175	Ø 200	Ø 250	Ø 300
●	15-80-097	15-100-097	15-125-097	15-150-097	15-175-097	15-200-097	65-250-097	65-300-097
○	-	55-100-097	55-125-097	55-150-097	55-175-097	55-200-097	-	-
●	-	-	-	-	-	-	-	-
○	-	-	-	-	-	-	-	-



# FINISHING PLATES

## 2 Piece Round Fixed Finishing Plate 45° (75mm wide)

The Round Finishing Plate comes in two parts and is used to tidy the area around the flue as it passes through a wall. This plate is attached to the wall where the flue is passing through at 45° and comprises of 2 plates at a fixed angle of 45°. Use silicone and screws to secure against the wall.

m	Ø 80	Ø 100	Ø 125	Ø 150	Ø 175	Ø 200	Ø 250	Ø 300
●	15-80-107	15-100-107	15-125-107	15-150-107	15-175-107	15-200-107	65-250-107	65-300-107
○	-	55-100-107	55-125-107	55-150-107	55-175-107	55-200-107	-	-
●	-	-	-	-	-	-	-	-
●	-	-	-	-	-	-	-	-



## 2 Piece Round Fixed Finishing Plate 90° (75mm wide)

The Round Finishing Plate comes in two parts and is used to tidy the area around the flue as it passes through a wall. This plate is attached to the wall where the flue is passing through at 90° and comprises of 2 plates at a fixed angle of 90°. Use silicone and screws to secure against the wall.

m	Ø 80	Ø 100	Ø 125	Ø 150	Ø 175	Ø 200	Ø 250	Ø 300
●	15-80-106	15-100-106	15-125-106	15-150-106	15-175-106	15-200-106	65-250-106	65-300-106
○	-	55-100-106	55-125-106	55-150-106	55-175-106	55-200-106	-	-
●	-	-	-	-	-	-	-	-
●	-	-	-	-	-	-	-	-



## 2 Piece Round Fixed Finishing Plate 45° (150mm wide)

The Round Finishing Plate comes in two parts and is used to tidy the area around the flue as it passes through a wall. This plate is attached to the wall where the flue is passing through at 45° and comprises of 2 plates at a fixed angle of 45°. Use silicone and screws to secure against the wall.

m	Ø 80	Ø 100	Ø 125	Ø 150	Ø 175	Ø 200	Ø 250	Ø 300
●	15-80-116	15-100-116	15-125-116	15-150-116	15-175-116	15-200-116	65-250-116	65-300-116
○	-	55-100-116	30/55-125-116	30/55-150-116	55-175-116	55-200-116	-	-
●	-	-	17/56-125-116	17/56-150-116	-	-	-	-
●	-	-	14/54-125-116	14/54-150-116	-	-	-	-



## 2 Piece Round Fixed Finishing Plate 90° (150mm wide)

The Round Finishing Plate comes in two parts and is used to tidy the area around the flue as it passes through a wall. This plate is attached to the wall where the flue is passing through at 90° and comprises of 2 plates at a fixed angle of 90°. Use silicone and screws to secure against the wall.

m	Ø 80	Ø 100	Ø 125	Ø 150	Ø 175	Ø 200	Ø 250	Ø 300
●	15-80-108	15-100-108	15-125-108	15-150-108	15-175-108	15-200-108	65-250-108	65-300-108
○	-	55-100-108	55-125-108	55-150-108	55-175-108	55-200-108	-	-
●	-	-	-	-	-	-	-	-
●	-	-	-	-	-	-	-	-



# TERMINALS



## Rain Cap

Standard rain protection terminal designed to minimise water ingress directly into the flue outlet.

m	Ø 80	Ø 100	Ø 125	Ø 150	Ø 175	Ø 200	Ø 250	Ø 300
●	10-80-090	10-100-090	2-125-090	2-150-090	10-175-090	10-200-090	60-250-090	60-300-090
○	-	50-100-090	30-125-090	30-150-090	50-175-090	50-200-090	-	-
●	-	-	17-125-090	17-150-090	-	-	-	-
●	-	-	14-125-090	14-150-090	-	-	-	-



## Anti-Wind Terminal

The Anti-Wind terminal has a rain cap at its core with an outer cover to give ultimate rain and wind protection.

m	Ø 80	Ø 100	Ø 125	Ø 150	Ø 175	Ø 200	Ø 250	Ø 300
●	10-80-091	10-100-091	2-125-091	2-150-091	10-175-091	10-200-091	60-250-091	60-300-091
○	-	50-100-091	30-125-091	30-150-091	50-175-091	50-200-091	-	-
●	-	-	17-125-091	17-150-091	-	-	-	-
●	-	-	14-125-091	14-150-091	-	-	-	-



## Gas Cowl

Gas cowls are to be use on gas appliances only, the product is not suitable for solid fuel appliances.

m	Ø 80	Ø 100	Ø 125	Ø 150	Ø 175	Ø 200	Ø 250	Ø 300
●	10-80-092	10-100-092	2-125-092	2-150-092	10-175-092	10-200-092	60-250-092	60-300-092
○	-	50-100-092	30-125-092	30-150-092	50-175-092	50-200-092	-	-
●	-	-	-	-	-	-	-	-
●	-	-	-	-	-	-	-	-



## Rotating Cowl

Rotating cowls are one method of helping with the effects of down draft in the chimney system. The terminal has a rotating cover that will spin around in the wind equalizing the outlet velocity.

m	Ø 80	Ø 100	Ø 125	Ø 150	Ø 175	Ø 200	Ø 250	Ø 300
●	10-80-094	10-100-094	2-125-094	2-150-094	10-175-094	10-200-094	60-250-094	60-300-094
○	-	50-100-094	30-125-094	30-150-094	50-175-094	50-200-094	-	-
●	-	-	-	-	-	-	-	-
●	-	-	-	-	-	-	-	-

# TERMINALS

## H-Cowl

The H-Cowl is a static Anti-Down draft terminal that has no moving parts and is perfect for high wind areas. The terminal offers extremely good protection from water ingress.

m	Ø 80	Ø 100	Ø 125	Ø 150	Ø 175	Ø 200	Ø 250	Ø 300
●	-	-	2-125-103	2-150-103	-	-	-	-
○	-	-	30-125-103	30-150-103	-	-	-	-
●	-	-	-	-	-	-	-	-
○	-	-	-	-	-	-	-	-



## Cone Top Cowl

Cone top /open terminals offer the least resistance of all the family of terminals, the open construction allows the maximum exit velocity of the flue gas. Please note only use on systems where a tee cap and train is installed to allow any water in the system to drain away.

m	Ø 80	Ø 100	Ø 125	Ø 150	Ø 175	Ø 200	Ø 250	Ø 300
●	10-80-093	10-100-093	2-125-093	2-150-093	10-175-093	10-200-093	60-250-093	60-300-093
○	-	50-100-093	30-125-093	30-150-093	50-175-093	50-200-093	-	-
●	-	-	17-125-093	17-150-093	-	-	-	-
○	-	-	14-125-093	14-150-093	-	-	-	-



## Rain Cap with Mesh

Standard rain cap terminal with added 25mm square wire mesh to stop birds or vermin entering and blocking the flue way. Suitable for all fuel except gas.

m	Ø 80	Ø 100	Ø 125	Ø 150	Ø 175	Ø 200	Ø 250	Ø 300
●	10-80-112	10-100-112	2-125-112	2-150-112	10-175-112	10-200-112	60-250-112	60-300-112
○	-	50-100-112	30-125-112	30-150-112	50-175-112	50-200-112	-	-
●	-	-	17-125-112	17-150-112	-	-	-	-
○	-	-	14-125-112	14-150-112	-	-	-	-



## Insulation Cover Plate

Used to cover the final section of TWpro to the elements when a 3rd party terminal is being used.

Please note we take no responsibility for the fixing of the 3rd party terminal to the TWPro system Chimney.

m	Ø 80	Ø 100	Ø 125	Ø 150	Ø 175	Ø 200	Ø 250	Ø 300
●	-	-	2-125-104	2-150-104	10-175-104	10-200-104	60-250-104	60-300-104
○	-	-	30-125-104	30-150-104	50-175-104	50-200-104	-	-
●	-	-	17-125-104	17-150-104	-	-	-	-
○	-	-	14-125-104	14-150-104	-	-	-	-



# ACCESSORIES



## Damper Section

Flue Damper helps to regulate draught within the chimney. The Flue Damper is encased in a Pipe Length. It is not essential unless you have problems controlling your stove.

m	Ø 80	Ø 100	Ø 125	Ø 150	Ø 175	Ø 200	Ø 250	Ø 300
●	10-80-006	10-100-006	2-125-006	2-150-006	10-175-006	10-200-006	60-250-006	60-300-006
○	-	50-100-006	30-125-006	30-150-006	50-175-006	50-200-006	-	-
●	-	-	-	-	-	-	-	-
○	-	-	-	-	-	-	-	-



## Draught Stabiliser

Flue Damper helps to regulate and stabilise draught within the chimney. The Flue Damper should be installed in the branch of a 90 Tee in the same room as the combustion appliance.

m	Ø 80	Ø 100	Ø 125	Ø 150	Ø 175	Ø 200	Ø 250	Ø 300
●	15-80-007	15-100-007	15-125-007	15-150-007	15-175-007	15-200-007	65-250-007	65-300-007
○	-	55-100-007	55-125-007	55-150-007	55-175-007	55-200-007	-	-
●	-	-	-	-	-	-	-	-
○	-	-	-	-	-	-	-	-



## Wall Sleeve

The Wall Sleeve is used to protect the chimney in the wall passage when the flue system passes to the outside wall. The gap between the flue and the Wall Sleeve can be filled with Rockwool. If going through the wall at 45 degrees, you will have to taper-cut the sleeve so that it fits flush in the wall. It can be cut using a grinder or a hacksaw.

m	Ø 80	Ø 100	Ø 125	Ø 150	Ø 175	Ø 200	Ø 250	Ø 300
●	15-80-098	15-100-098	15-125-098	15-150-098	15-175-098	15-200-098	65-250-098	65-300-098
○	-	-	-	-	-	-	-	-
●	-	-	-	-	-	-	-	-
○	-	-	-	-	-	-	-	-



## Wall Sleeve 45° Adjustable

The Adjustable Wall Sleeve is used to protect the chimney in the wall passage when the flue system passes to the outside wall. The gap between the flue and the Wall Sleeve can be filled with Rockwool. This Wall Sleeve is pre-cut at 45°, and is adjustable so it can be manually extended within wall.

m	Ø 80	Ø 100	Ø 125	Ø 150	Ø 175	Ø 200	Ø 250	Ø 300
●	15-80-100	15-100-100	15-125-100	15-150-100	15-175-100	15-200-100	65-250-100	65-300-100
○	-	-	-	-	-	-	-	-
●	-	-	-	-	-	-	-	-
○	-	-	-	-	-	-	-	-

# ACCESSORIES

## Gasket Seal

The Gasket Seal is required where the chimney is being used on a condensing appliance.

Ø	Ø 80	Ø 100	Ø 125	Ø 150	Ø 175	Ø 200	Ø 250	Ø 300
15	15-80-102	15-100-102	15-125-102	15-150-102	15-175-102	15-200-102	65-250-102	65-300-102
15	-	15-100-102	15-125-102	15-150-102	15-175-102	15-200-102	-	-
65	-	-	-	-	-	-	-	-
65	-	-	-	-	-	-	-	-



## Special LOCKING BAND TWPro to KC

The TWPro to KC transitional locking band is used when connecting into existing KC. TWPro at the bottom KC at the top.

Please note if a transitional band is used the whole system becomes 60 mm to combustible materials.

Ø	Ø 80	Ø 100	Ø 125	Ø 150	Ø 175	Ø 200	Ø 250	Ø 300
2	-	-	2-125-150	2-150-150	-	-	-	-
30	-	-	30-125-150	30-150-150	-	-	-	-
65	-	-	-	-	-	-	-	-
65	-	-	-	-	-	-	-	-



## Special ADAPTOR TWPro to KC

The KC to TWPro transitional adaptor is used when connecting onto existing KC. KC at the bottom TWPro at the top.

Please note if a transitional adaptor is used the whole system becomes 60 mm to combustible materials.

Ø	Ø 80	Ø 100	Ø 125	Ø 150	Ø 175	Ø 200	Ø 250	Ø 300
2	-	-	2-125-151	2-150-151	-	-	-	-
30	-	-	30-125-151	30-150-151	-	-	-	-
65	-	-	-	-	-	-	-	-
65	-	-	-	-	-	-	-	-



## Air Seal Sleeve 150-280mm EPDM

Air Seal Sleeve is used to create an airtight seal around roof penetrations between 150mm and 280mm in diameter. This seal comprises of butyl backing and the EPDM flashing ensuring a secure, easy and effective fit. Ideal for installation in passive houses or when trying to reduce heat loss.

For a fast and effective sealing of penetrations through vapour barriers.

The EPDM sleeve can be cut to accommodate any pipe size from 150mm to 280mm, perfect for use with twin wall chimney systems.

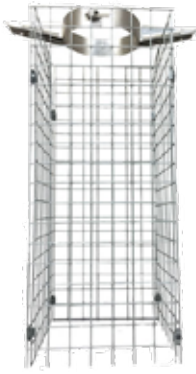
The self-adhesive butyl backing will adhere to most substrates.

Will accommodate roof pitches from 0 to 45 degrees.

CODE: 12-AIRSEAL



# ACCESSORIES



## Loft Mesh Kit complete 1m high

The loft mesh kit is used to meet building regulations.

Within the loft area the flue system must be boxed in or properly enclosed.

This is in order to avoid combustible materials either being placed too close to or falling against the chimney.

The system makes the installation very quick and safe, ensuring the required space around the flue.

m	Ø 80	Ø 100	Ø 125	Ø 150	Ø 175	Ø 200	Ø 250	Ø 300
●	-	-	13-MESHKIT-125	13-MESHKIT-150	13-MESHKIT-175	13-MESHKIT-200	-	-
○	-	-	-	-	-	-	-	-
●	-	-	-	-	-	-	-	-
○	-	-	-	-	-	-	-	-



## Loft Shield Galvanised 1m high

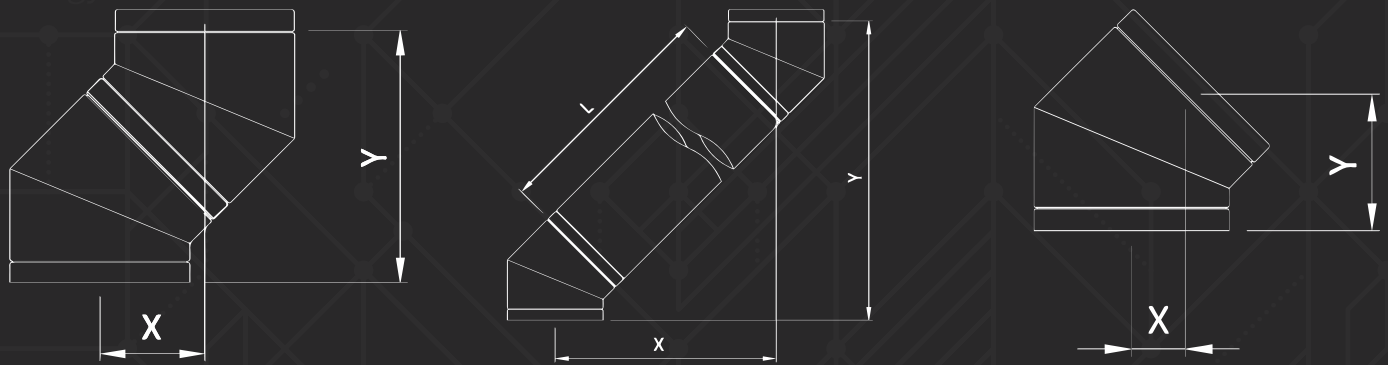
Within the loft area the flue system must be boxed in or properly enclosed.

This is in order to avoid combustible materials either being placed too close to or falling against the chimney.

The system makes the installation very quick and safe, ensuring the required space around the flue.



# OFFSET DATA



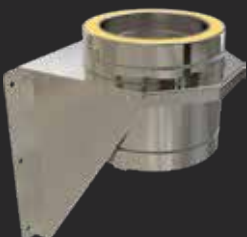
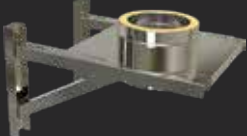
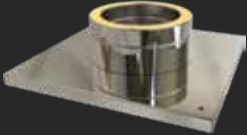

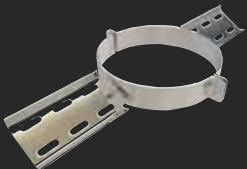
CODO	L	Ø80/130		Ø100/150		Ø125/175		Ø150/200		Ø175/225		Ø200/250		Ø250/300		Ø300/350	
		X	Y	X	Y	X	Y	X	Y	X	Y	X	Y	X	Y	X	Y
-	-	96.4	233	102	247	110	264	117	283	125	301	131	317	146	353	161	389
45°	0,25M	248	385	254	399	262	416	269	435	277	453	283	469	298	505	313	541
	0,5M	425	562	431	576	438	593	446	611	453	630	460	645	475	682	490	717
	1M	779	915	785	929	792	947	799	965	807	1122	813	999	829	1035	646	1071

CODO	L	Ø80/130		Ø100/150		Ø125/175		Ø150/200		Ø175/225		Ø200/250		Ø250/300		Ø300/350	
		X	Y	X	Y	X	Y	X	Y	X	Y	X	Y	X	Y	X	Y
-	-	61	229	64	240	67	251	71	266	74	278	78	289	85	316	91	340
30°	0,25M	169	416	172	426	175	438	179	452	182	464	185	476	192	502	198	526
	0,5M	294	632	297	642	300	654	304	668	307	680	310	692	317	718	323	742
	1M	544	1065	547	1076	550	1087	554	1101	557	1113	560	1125	567	1151	573	1175




CODO	L	Ø80/130		Ø100/150		Ø125/175		Ø150/200		Ø175/225		Ø200/250		Ø250/300		Ø300/350	
		X	Y	X	Y	X	Y	X	Y	X	Y	X	Y	X	Y	X	Y
-	-	29	223	30	227	31	233	32	242	33	247	33	253	35	267	37	279
15°	0,25M	85	431	86	435	86	441	87	449	88	455	89	461	91	475	92	487
	0,5M	150	672	150	677	151	683	152	691	153	697	154	702	156	716	157	729
	1M	279	1155	280	1160	280	1165	282	1174	282	1180	283	1185	285	1199	287	1211

# SUPPORT DATA

## Vertical Load Supports

Product	Øint	[In meters of pipe]	
		Load above	Load below
<b>Base Support Plate</b> 	080	12	3
	100	12	3
	125	12	3
	150	12	3
	175	12	3
	200	12	3
	250	12	3
	300	12	3
<b>Adjustable Base Support 80-280mm</b> 	080	12	3
	100	12	3
	125	12	3
	150	12	3
	175	9	3
	200	9	3
	250	6	3
	300	6	3
<b>Console Plate</b> 	080	12	3
	100	12	3
	125	12	3
	150	12	3
	175	12	3
	200	12	3
	250	12	3
	300	12	3
<b>Joist Support</b> 	-	4	-
	-	4	-
	-	4	-
	-	4	-
	-	4	-
	-	4	-
	-	4	-
	-	4	-
<b>Roof Support</b> 	-	2	-
	-	2	-
	-	2	-
	-	2	-
	-	2	-
	-	2	-
	-	2	-
	-	2	-

## Lateral Supports

Product	Øext	[Meters]
		Distance
<b>Wall Band 50-80mm</b> 	130	3
	150	3
	175	3
	200	3
	225	3
	250	3
	300	3
	350	3
<b>Wall Band 80-130mm</b> 	130	3
	150	3
	175	3
	200	3
	225	3
	250	3
	300	3
	350	3
<b>Wall Band 130-210mm</b> 	130	3
	150	3
	175	3
	200	3
	225	3
	250	3
	300	3
	350	3
<b>Wall Band 210-420mm</b> 	130	3
	150	3
	175	3
	200	3
	225	3
	250	3
	300	3
	350	3





Mi-Flues Ltd.  
Taymin Business Park,  
Mitcham Road, Blackpool,  
Lancashire, FY4 4QN  
T: 01253 600 060 • F: 01253 600 061  
sales@mi-flues.com • www.mi-flues.com