

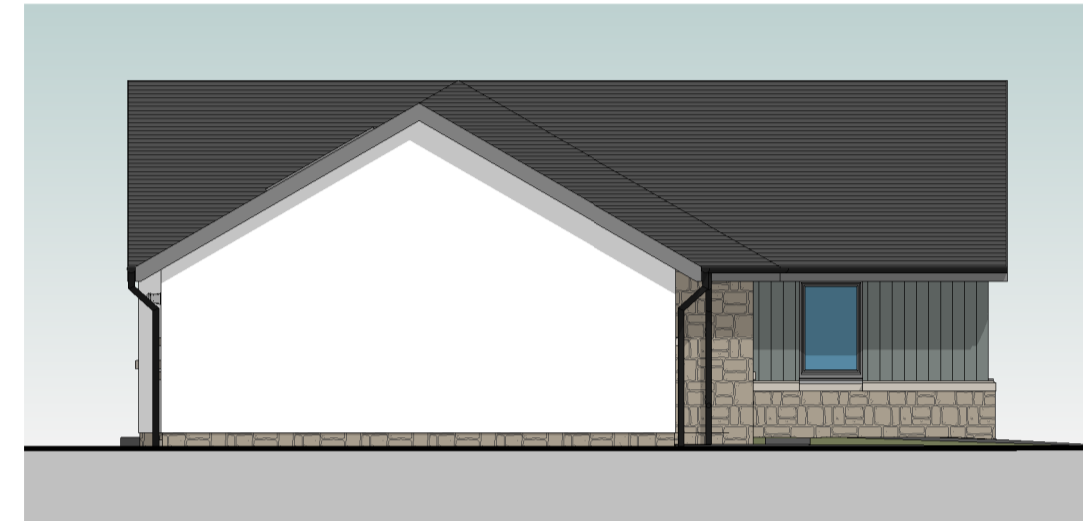
(PL) South East Elevation
1 : 100



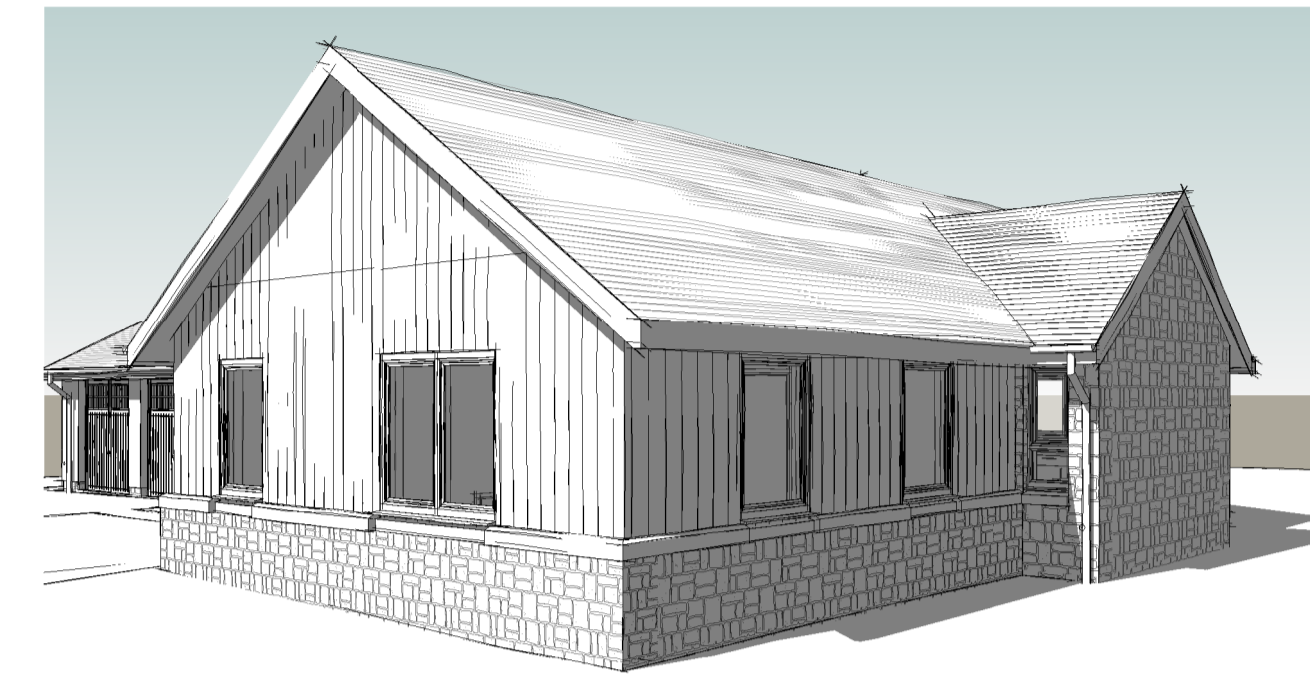
(PL) North East Elevation
1 : 100



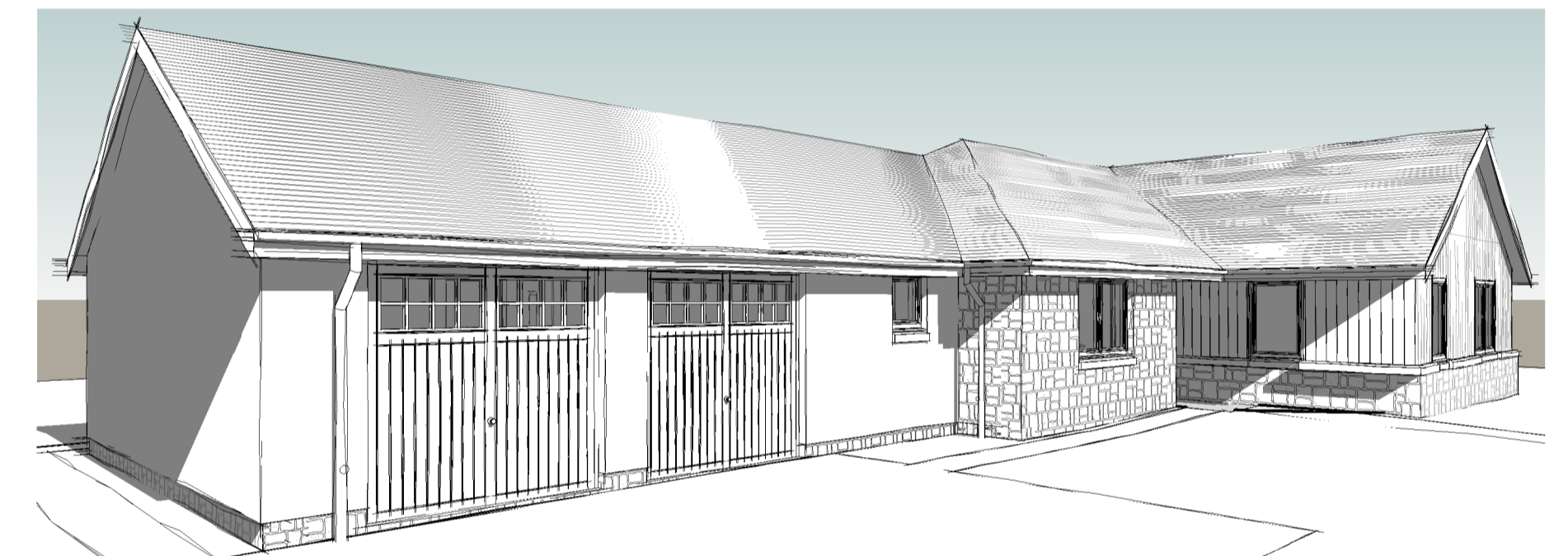
(PL) North West Elevation
1 : 100



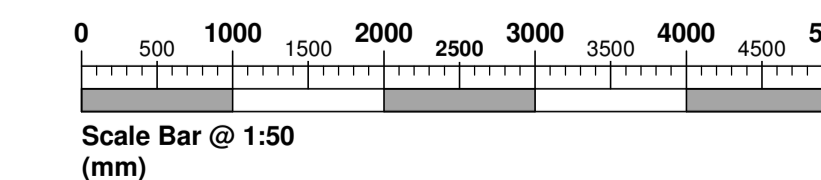
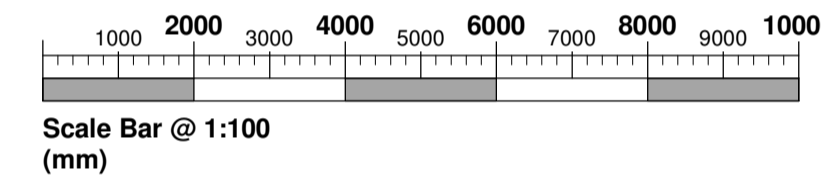
(PL) South West Elevation
1 : 100



Front Iso 01



Front Iso 02



01 (PL) Ground Floor
1 : 50

Gross Internal Areas (excluding garage)

01 (GA) Ground Floor	126.62 m ²	1362.94 ft ²
Grand total: 1	126.62 m ²	1362.94 ft ²

GSBrown

 CONSTRUCTION

50 years

The Nurseries, St Madoes,
 Glencarse, PH2 7NF
 Tel: 01738 860591
 Email: office@gsbrown.co.uk
 www.gsbrown.co.uk

DATE:	SCALE:	DRAWN BY:
Dec 2020	As indicated	KS

DWG TITLE:

PROJECT:

College Mill Road, Almondbank, Perth

DWG No.	Rev.
CMR(PL) A 101	A