

Rourkton

Druid's House

Bridg Hous

CRAIGNEUK ROAD

DEER PARK

River Almond

PAVILION

HEP AND TRANSFORMER

TRACK

COLLEGE MILL ROAD

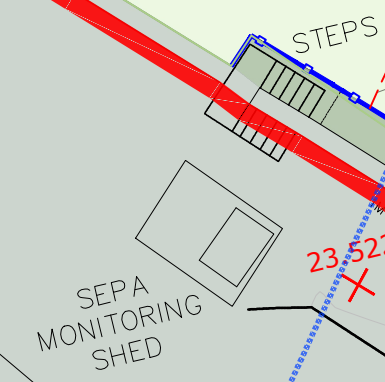
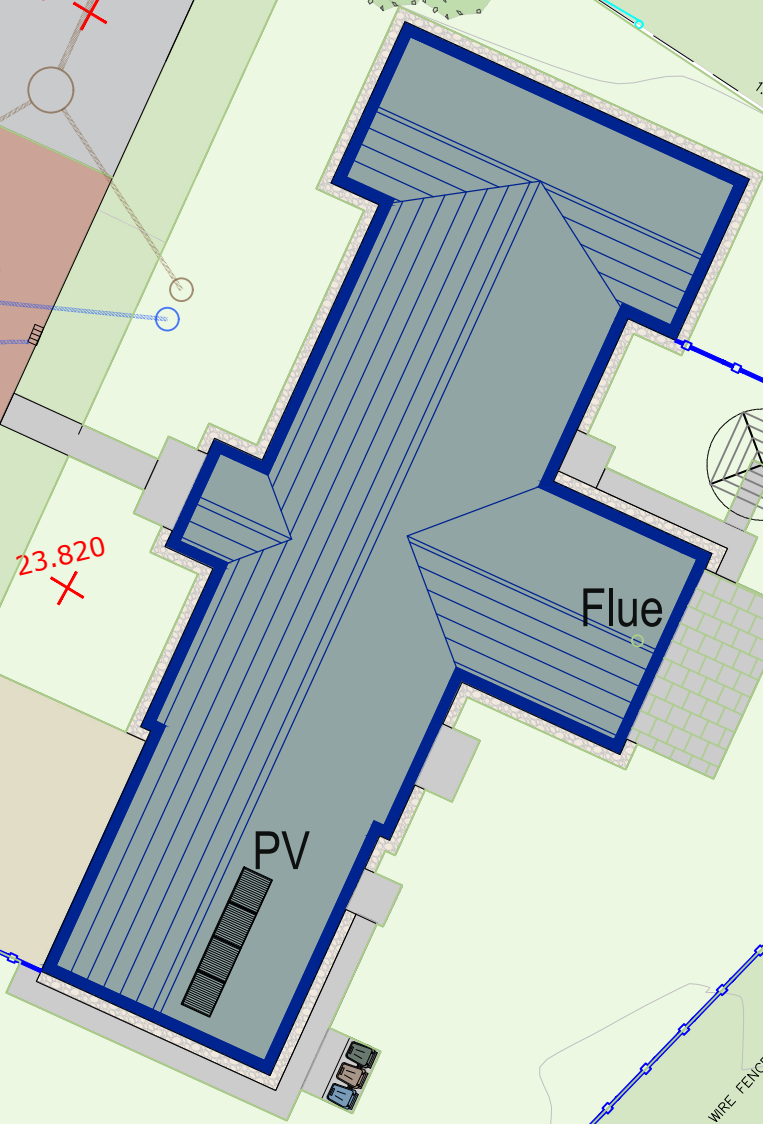
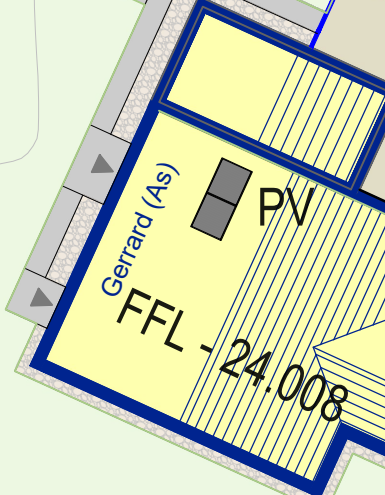
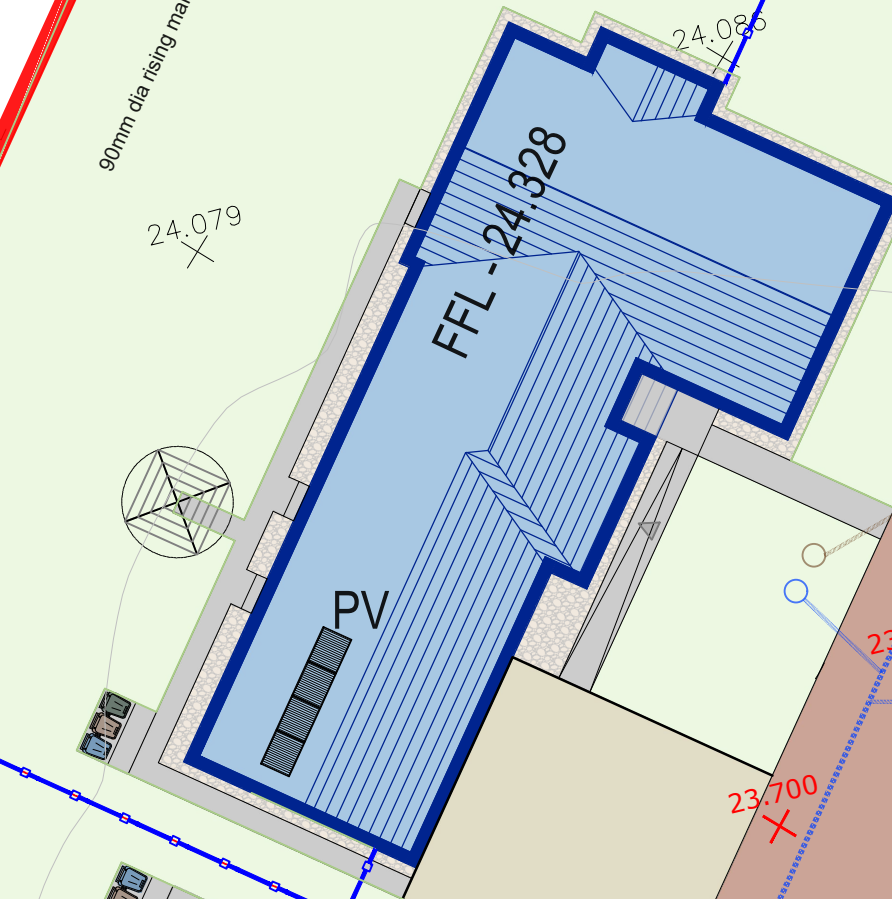
01

02

03

ck Bridge

GENERAL ACCESS ROAD



DATE	Oct 2019	SCALE	1:200 @ A1
DRAWN	KS		
DRG. NO.	CMR (PL) A-002	REV.	A
DRG. STATUS			

GS Brown CONSTRUCTION
The Nurseries, St Madoes, Perth, PH2 7NF Tel. 01738 860591

JOB TITLE
ALMONDBANK COLLEGE MILL ROAD

DRAWING
SITE PLAN AS PROPOSED
SITE AREA - 0.374 acres

DATE Oct 2019 SCALE 1:200 @ A1
DRAWN KS
DRG. NO. CMR (PL) A-002 REV. A
DRG. STATUS