

**Telecommunications Development Photomontage Report**

**Report Date: 11/08/2021**

**Project: WAM144 Tittenhurst Park**

**Surveyed by: Neil Gates**

**Created by: Ignatius Lo**

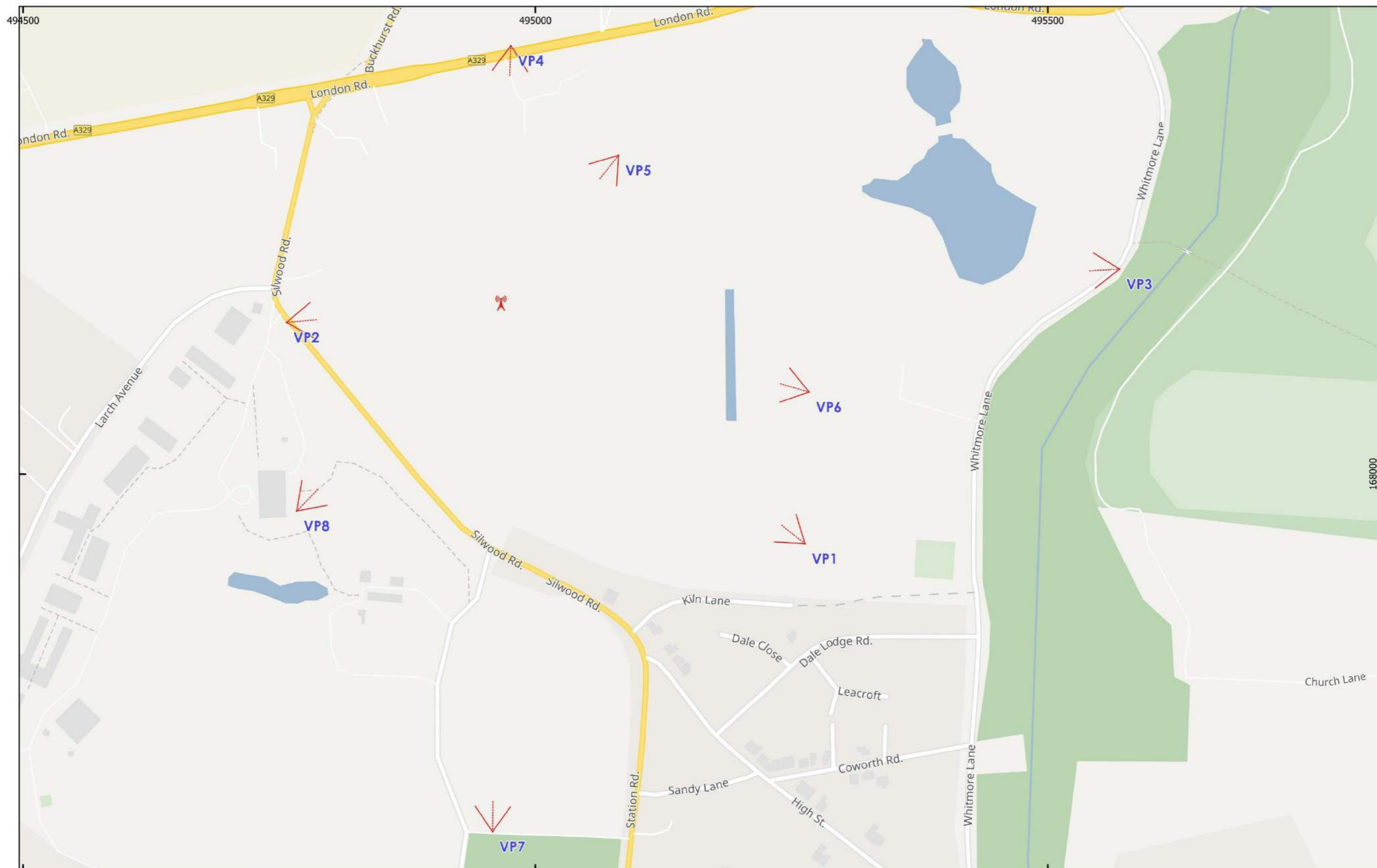
**Approved by: Kieran Tarpey**

**Client:**



**Provided by:**





Map details:  
 Projection: OSGB EPSG 27700  
 Scale: 1:3,296

**Viewpoint Location Map**  
**Site ID:WAM144**

Number of Viewpoints: 8  
 Proposed Development: Telecom Mast  
 Mast Height (metres): 30  
 Location: E:494966, N:168167

Site Name: Tittenhurst Park  
 Address: Tittenhurst Park, London Road, Ascot, Berkshire

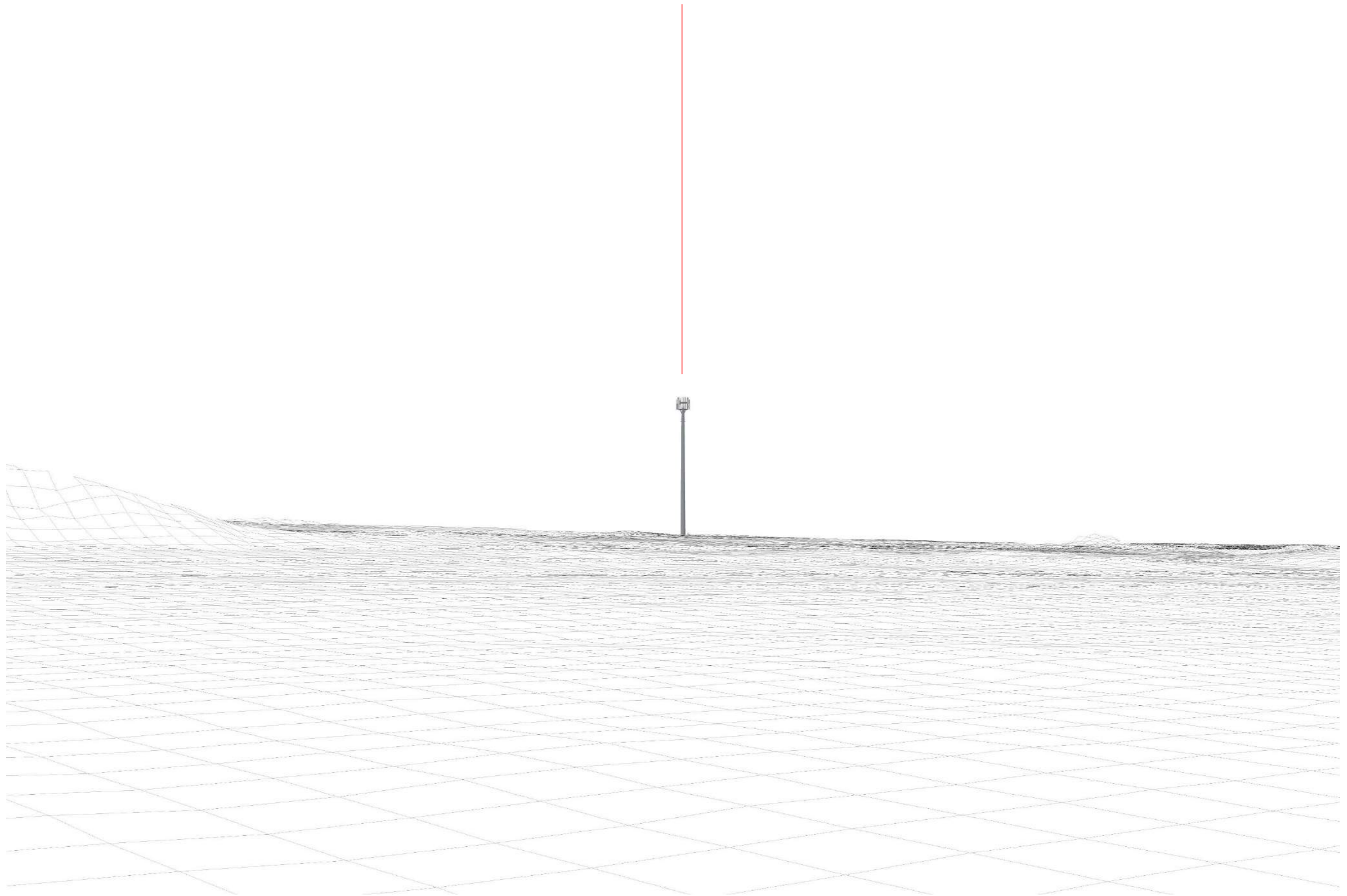



		Existing View of Viewpoint 1									
Site ID	View Point No.	Easting	Northing	Elevation (AOD)m	Direction-Degrees(N)	Distance (m)					
WAM144	VP1	495263	167932	52.8	-50.9	378.7					
Viewing Distance: 300mm			Height above ground: 1.5m								
Page size: A3			Camera & Lens: Canon 6D - 50mm Focal Length								



Provided by:  
[www.entrust-services.com](http://www.entrust-services.com)  
 Unit 4 Century Building,  
 Liverpool, L3 4BJ  
 T: 01925 407 074

**Surveyed by:** Neil Gates  
**Created by:** Ignatius Lo  
**Approved by:** Kieran Tarpey



		Wireframe view of Viewpoint 1						Provided by:	Surveyed by: Neil Gates
Site ID	View Point No.	Easting	Northing	Elevation (AOD)m	Direction-Degrees(N)	Distance (m)		<a href="http://www.entrust-services.com">www.entrust-services.com</a>	Created by: Ignatius Lo
WAM144	VP1	495263	167932	52.8	-50.9	378.7		Unit 4 Century Building, Liverpool, L3 4BJ	Approved by: Kieran Tarpey
Viewing Distance: 300mm		Height above ground: 1.5m						T: 01925 407 074	
Page size: A3		Camera & Lens: Canon 6D - 50mm Focal Length							



		Proposed view of Viewpoint 1 (Not Visible)				
Site ID	View Point No.	Easting	Northing	Elevation (AOD)m	Direction-Degrees(N)	Distance (m)
WAM144	VP1	495263	167932	52.8	-50.9	378.7
Viewing Distance: 300mm			Height above ground: 1.5m			
Page size: A3			Camera & Lens: Canon 6D - 50mm Focal Length			



Provided by:  
[www.entrust-services.com](http://www.entrust-services.com)  
 Unit 4 Century Building,  
 Liverpool, L3 4BJ  
 T: 01925 407 074

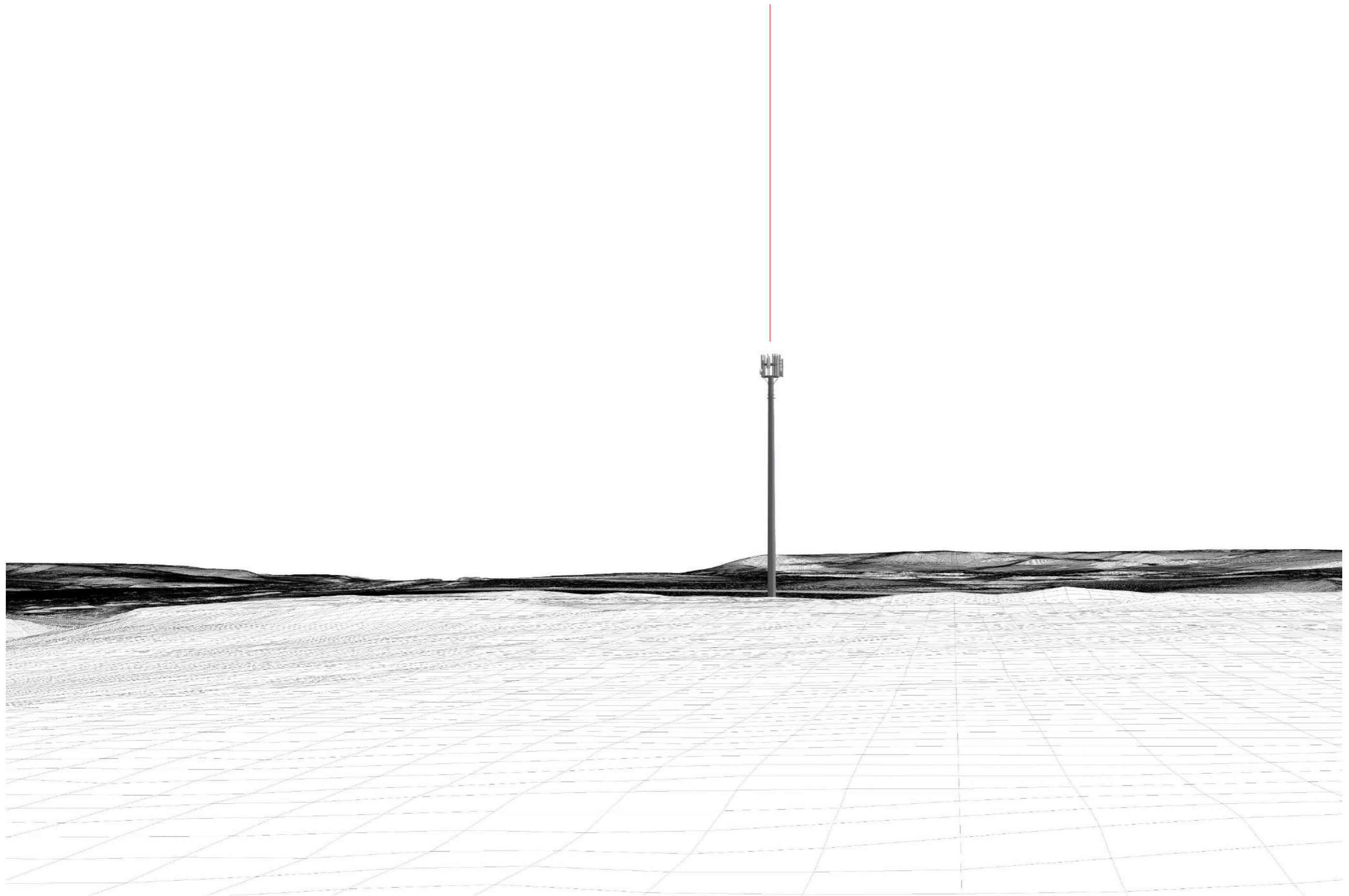
**Surveyed by:** Neil Gates  
**Created by:** Ignatius Lo  
**Approved by:** Kieran Tarpey




		Existing View of Viewpoint 2				
Site ID	View Point No.	Easting	Northing	Elevation (AOD)m	Direction-Degrees(N)	Distance (m)
WAM144	VP2	494757	168148	71.4	82.5	209.9
Viewing Distance: 300mm			Height above ground: 1.5m			
Page size: A3			Camera & Lens: Canon 6D - 50mm Focal Length			



Provided by: <a href="http://www.entrust-services.com">www.entrust-services.com</a>	<b>Surveyed by:</b> Neil Gates
Unit 4 Century Building, Liverpool, L3 4BJ T: 01925 407 074	<b>Created by:</b> Ignatius Lo
	<b>Approved by:</b> Kieran Tarpey



		Wireframe view of Viewpoint 2						Provided by:	Surveyed by:
Site ID	View Point No.	Easting	Northing	Elevation (AOD)m	Direction-Degrees(N)	Distance (m)		<a href="http://www.entrust-services.com">www.entrust-services.com</a>	Neil Gates
WAM144	VP2	494757	168148	71.4	82.5	209.9		Unit 4 Century Building, Liverpool, L3 4BJ	Created by: Ignatius Lo
Viewing Distance: 300mm		Height above ground: 1.5m						T: 01925 407 074	Approved by: Kieran Tarpey
Page size: A3		Camera & Lens: Canon 6D - 50mm Focal Length							




		Proposed view of Viewpoint 2 (Not Visible)				
Site ID	View Point No.	Easting	Northing	Elevation (AOD)m	Direction-Degrees(N)	Distance (m)
WAM144	VP2	494757	168148	71.4	82.5	209.9
Viewing Distance: 300mm			Height above ground: 1.5m			
Page size: A3			Camera & Lens: Canon 6D - 50mm Focal Length			

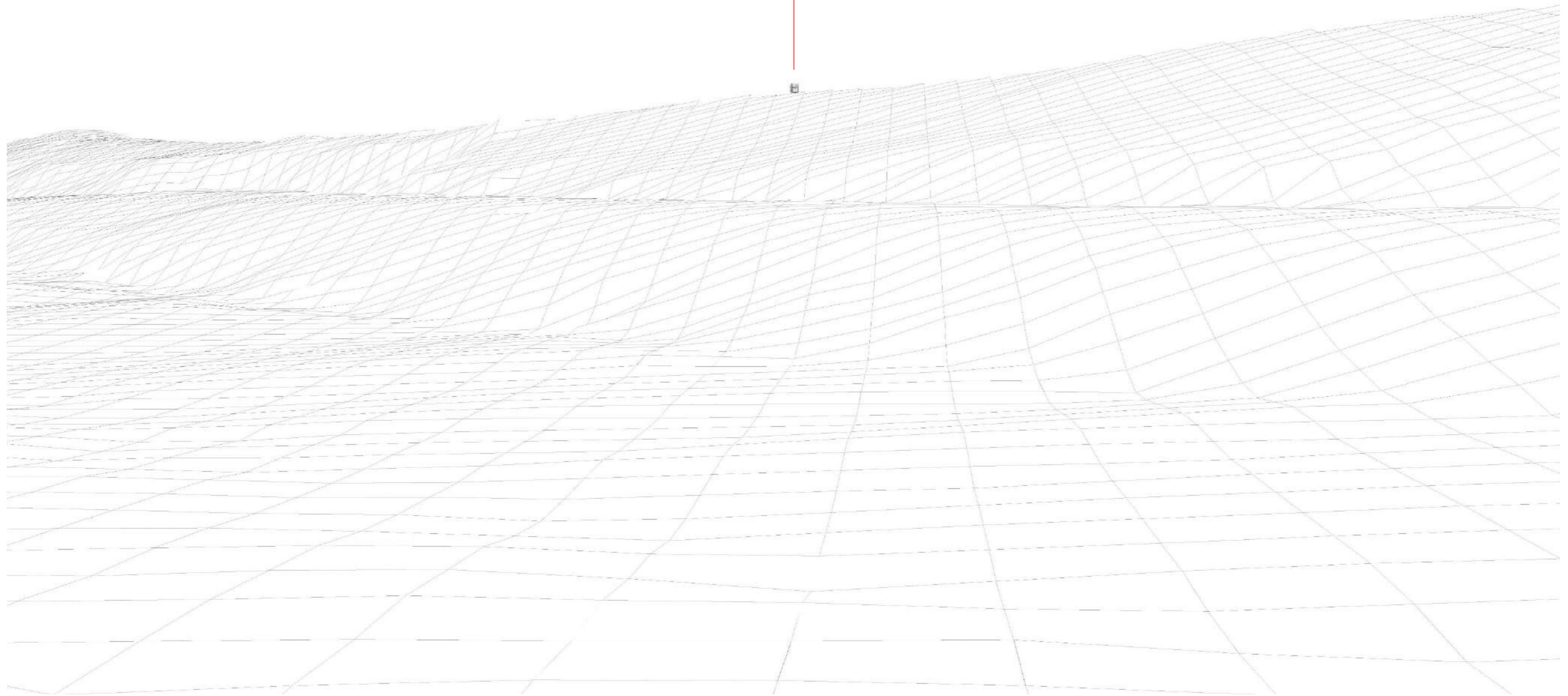



Provided by: <a href="http://www.entrust-services.com">www.entrust-services.com</a>	<b>Surveyed by:</b> Neil Gates
Unit 4 Century Building, Liverpool, L3 4BJ T: 01925 407 074	<b>Created by:</b> Ignatius Lo
	<b>Approved by:</b> Kieran Tarpey






		Existing View of Viewpoint 3						Provided by:	Surveyed by: Neil Gates
Site ID	View Point No.	Easting	Northing	Elevation (AOD)m	Direction-Degrees(N)	Distance (m)		<a href="http://www.entrust-services.com">www.entrust-services.com</a>	Created by: Ignatius Lo
WAM144	VP3	495570	168200	41	-92.3	604.9		Unit 4 Century Building, Liverpool, L3 4BJ	Approved by: Kieran Tarpey
Viewing Distance: 300mm		Height above ground: 1.5m						T: 01925 407 074	
Page size: A3		Camera & Lens: Canon 6D - 50mm Focal Length							



Wireframe view of Viewpoint 3								Provided by:	Surveyed by:
Site ID	View Point No.	Easting	Northing	Elevation (AOD)m	Direction-Degrees(N)	Distance (m)		<a href="http://www.entrust-services.com">www.entrust-services.com</a>	Neil Gates
WAM144	VP3	495570	168200	41	-92.3	604.9		Unit 4 Century Building, Liverpool, L3 4BJ	Created by: Ignatius Lo
Viewing Distance: 300mm			Height above ground: 1.5m					T: 01925 407 074	Approved by: Kieran Tarpey
Page size: A3			Camera & Lens: Canon 6D - 50mm Focal Length						



		Proposed view of Viewpoint 3 (Not Visible)						Provided by:	Surveyed by:
Site ID	View Point No.	Easting	Northing	Elevation (AOD)m	Direction-Degrees(N)	Distance (m)		<a href="http://www.entrust-services.com">www.entrust-services.com</a>	Neil Gates
WAM144	VP3	495570	168200	41	-92.3	604.9		Unit 4 Century Building, Liverpool, L3 4BJ	Created by: Ignatius Lo
Viewing Distance: 300mm		Height above ground: 1.5m						T: 01925 407 074	Approved by: Kieran Tarpey
Page size: A3		Camera & Lens: Canon 6D - 50mm Focal Length							

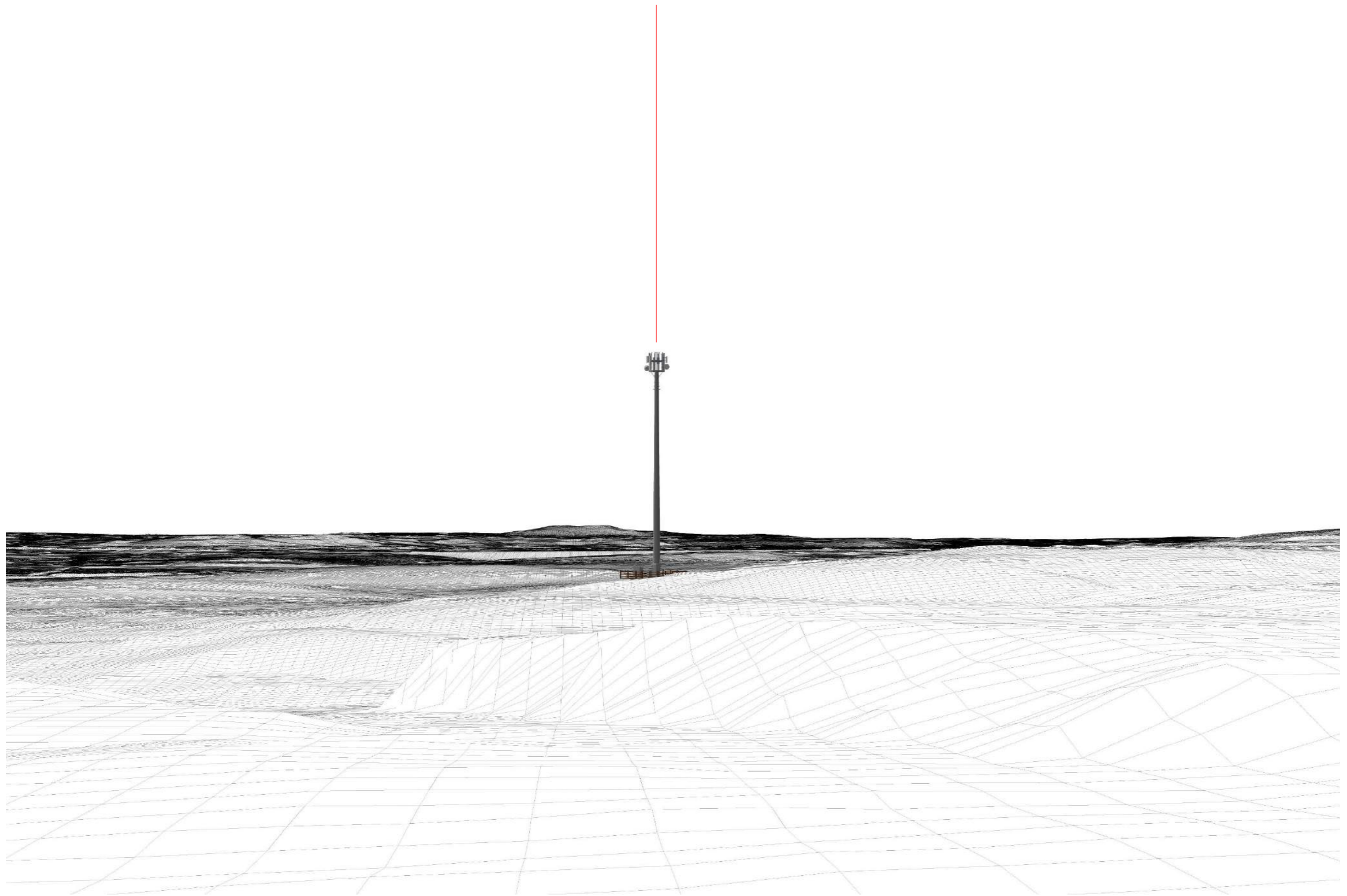



		Existing View of Viewpoint 4									
Site ID	View Point No.	Easting	Northing	Elevation (AOD)m	Direction-Degrees(N)	Distance (m)					
WAM144	VP4	494976	168418	69.6	-175.9	251.2					
Viewing Distance: 300mm			Height above ground: 1.5m								
Page size: A3			Camera & Lens: Canon 6D - 50mm Focal Length								



Provided by:  
[www.entrust-services.com](http://www.entrust-services.com)  
 Unit 4 Century Building,  
 Liverpool, L3 4BJ  
 T: 01925 407 074

**Surveyed by:** Neil Gates  
**Created by:** Ignatius Lo  
**Approved by:** Kieran Tarpey



		Wireframe view of Viewpoint 4						Provided by:	Surveyed by:
Site ID	View Point No.	Easting	Northing	Elevation (AOD)m	Direction-Degrees(N)	Distance (m)		<a href="http://www.entrust-services.com">www.entrust-services.com</a>	Neil Gates
WAM144	VP4	494976	168418	69.6	-175.9	251.2		Unit 4 Century Building, Liverpool, L3 4BJ	Created by: Ignatius Lo
Viewing Distance: 300mm		Height above ground: 1.5m						T: 01925 407 074	Approved by: Kieran Tarpey
Page size: A3		Camera & Lens: Canon 6D - 50mm Focal Length							



		Proposed view of Viewpoint 4 (Not Visible)									
Site ID	View Point No.	Easting	Northing	Elevation (AOD)m	Direction-Degrees(N)	Distance (m)					
WAM144	VP4	494976	168418	69.6	-175.9	251.2					
Viewing Distance: 300mm			Height above ground: 1.5m								
Page size: A3			Camera & Lens: Canon 6D - 50mm Focal Length								



Provided by:  
[www.entrust-services.com](http://www.entrust-services.com)  
 Unit 4 Century Building,  
 Liverpool, L3 4BJ  
 T: 01925 407 074

**Surveyed by:** Neil Gates  
**Created by:** Ignatius Lo  
**Approved by:** Kieran Tarpey

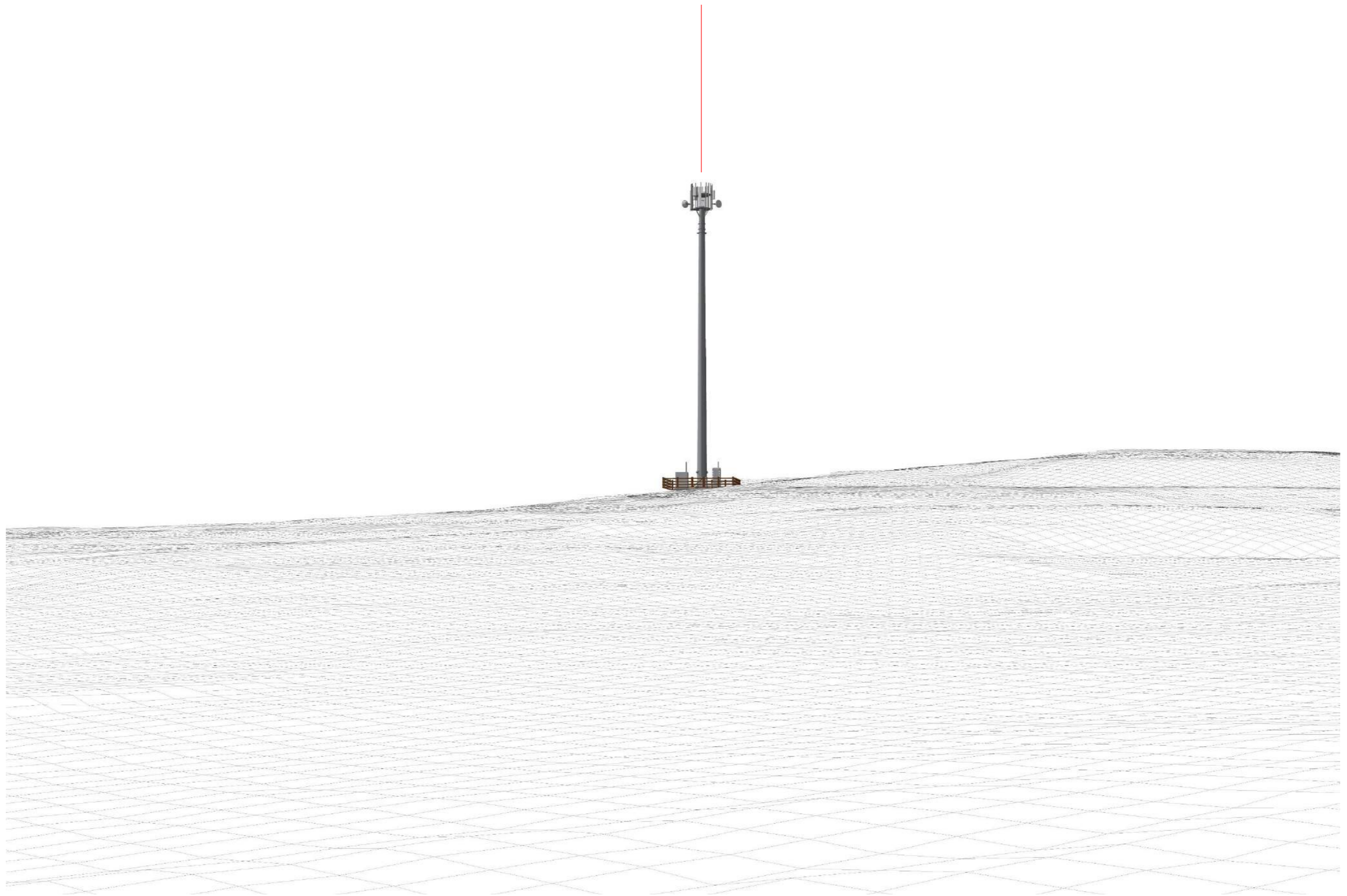


		<b>Existing View of Viewpoint 5</b>									
Site ID	View Point No.	Easting	Northing	Elevation (AOD)m	Direction-Degrees(N)	Distance (m)					
WAM144	VP5	495081	168311	57.7	-141	184.3					
Viewing Distance: 300mm			Height above ground: 1.5m								
Page size: A3			Camera & Lens: Canon 6D - 50mm Focal Length								



Provided by:  
[www.entrust-services.com](http://www.entrust-services.com)  
 Unit 4 Century Building,  
 Liverpool, L3 4BJ  
 T: 01925 407 074

**Surveyed by:** Neil Gates  
**Created by:** Ignatius Lo  
**Approved by:** Kieran Tarpey



		Wireframe view of Viewpoint 5									
Site ID	View Point No.	Easting	Northing	Elevation (AOD)m	Direction-Degrees(N)	Distance (m)					
WAM144	VP5	495081	168311	57.7	-141	184.3					
Viewing Distance: 300mm			Height above ground: 1.5m								
Page size: A3			Camera & Lens: Canon 6D - 50mm Focal Length								




Provided by:  
[www.entrust-services.com](http://www.entrust-services.com)  
 Unit 4 Century Building,  
 Liverpool, L3 4BJ  
 T: 01925 407 074

**Surveyed by:** Neil Gates  
**Created by:** Ignatius Lo  
**Approved by:** Kieran Tarpey





		<b>Proposed view of Viewpoint 5 (Not Visible)</b>						Provided by:	Surveyed by: Neil Gates
Site ID	View Point No.	Easting	Northing	Elevation (AOD)m	Direction-Degrees(N)	Distance (m)		<a href="http://www.entrust-services.com">www.entrust-services.com</a>	Created by: Ignatius Lo
WAM144	VP5	495081	168311	57.7	-141	184.3		Unit 4 Century Building, Liverpool, L3 4BJ	Approved by: Kieran Tarpey
Viewing Distance: 300mm		Height above ground: 1.5m						T: 01925 407 074	
Page size: A3		Camera & Lens: Canon 6D - 50mm Focal Length							

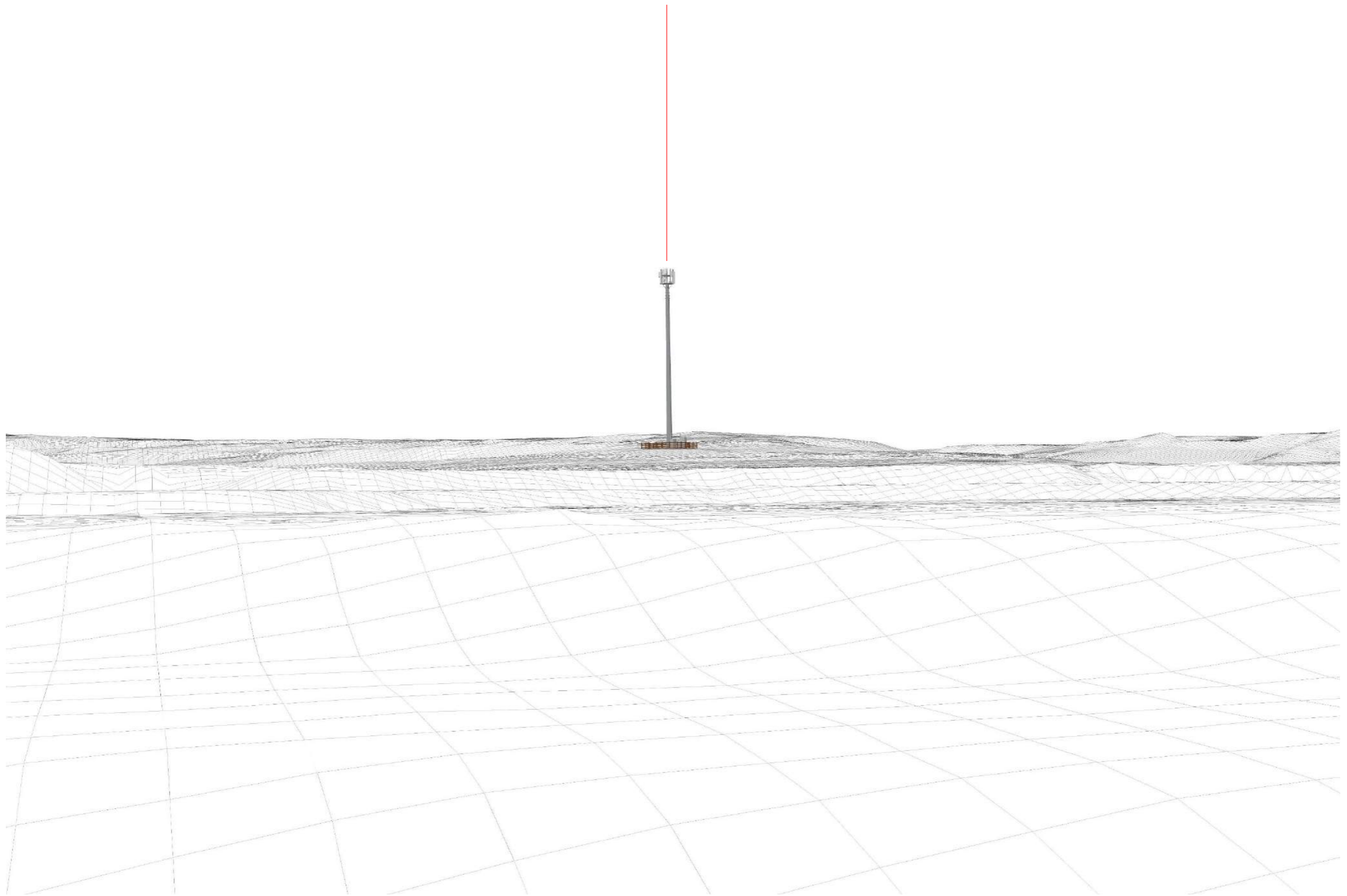



		Existing View of Viewpoint 6									
Site ID	View Point No.	Easting	Northing	Elevation (AOD)m	Direction-Degrees(N)	Distance (m)					
WAM144	VP6	495267	168080	55.1	-72.6	313.3					
Viewing Distance: 300mm			Height above ground: 1.5m								
Page size: A3			Camera & Lens: Canon 6D - 50mm Focal Length								



Provided by:  
[www.entrust-services.com](http://www.entrust-services.com)  
 Unit 4 Century Building,  
 Liverpool, L3 4BJ  
 T: 01925 407 074

**Surveyed by:** Neil Gates  
**Created by:** Ignatius Lo  
**Approved by:** Kieran Tarpey



		Wireframe view of Viewpoint 6						Provided by:	Surveyed by:
Site ID	View Point No.	Easting	Northing	Elevation (AOD)m	Direction-Degrees(N)	Distance (m)		<a href="http://www.entrust-services.com">www.entrust-services.com</a>	Neil Gates
WAM144	VP6	495267	168080	55.1	-72.6	313.3		Unit 4 Century Building, Liverpool, L3 4BJ	Created by: Ignatius Lo
Viewing Distance: 300mm		Height above ground: 1.5m						T: 01925 407 074	Approved by: Kieran Tarpey
Page size: A3		Camera & Lens: Canon 6D - 50mm Focal Length							




		Proposed view of Viewpoint 6 (Not Visible)									
Site ID	View Point No.	Easting	Northing	Elevation (AOD)m	Direction-Degrees(N)	Distance (m)					
WAM144	VP6	495267	168080	55.1	-72.6	313.3					
Viewing Distance: 300mm			Height above ground: 1.5m								
Page size: A3			Camera & Lens: Canon 6D - 50mm Focal Length								

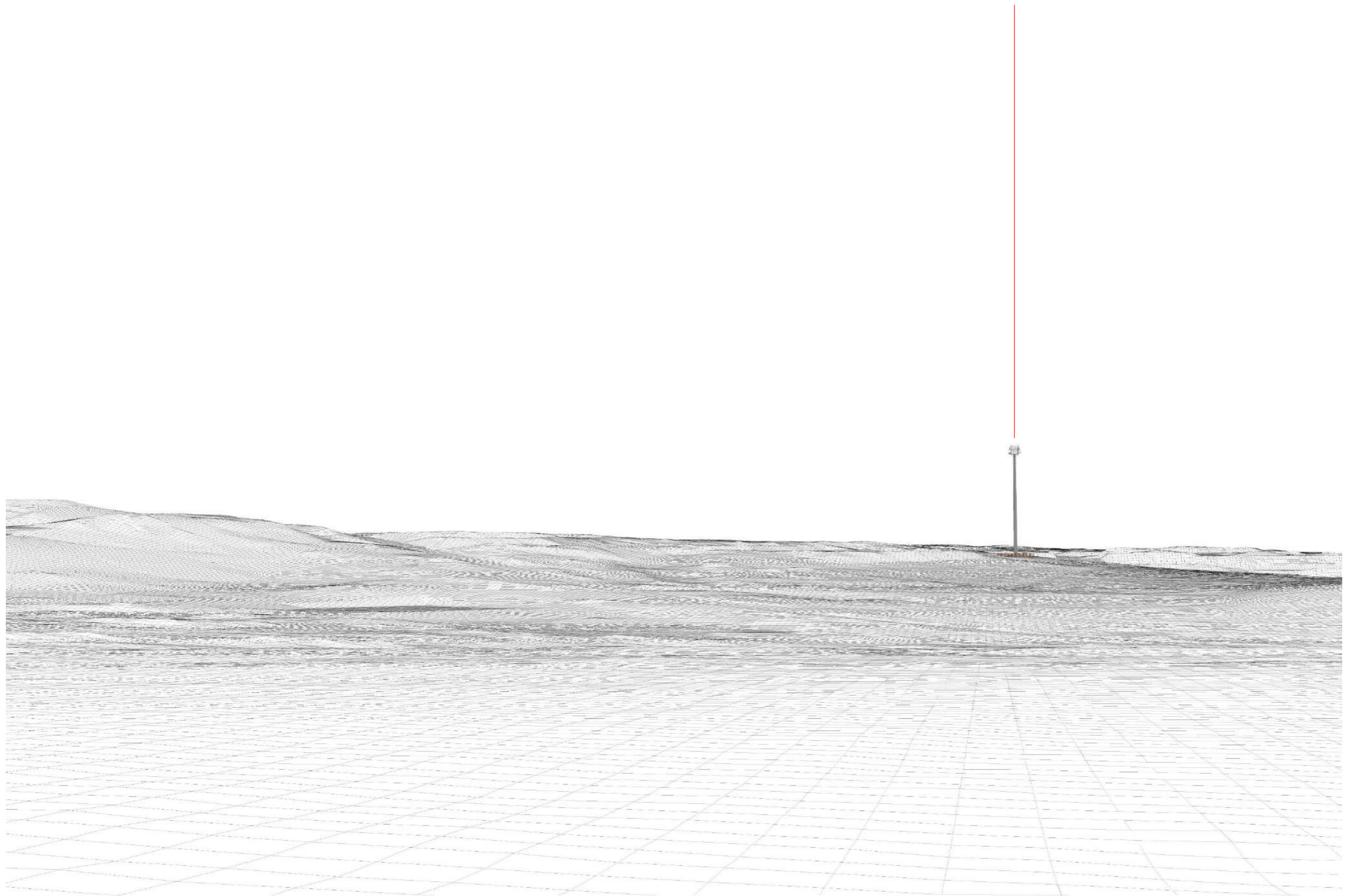



Provided by:  
[www.entrust-services.com](http://www.entrust-services.com)  
 Unit 4 Century Building,  
 Liverpool, L3 4BJ  
 T: 01925 407 074

**Surveyed by:** Neil Gates  
**Created by:** Ignatius Lo  
**Approved by:** Kieran Tarpey



		Existing View of Viewpoint 7						Provided by:	Surveyed by: Neil Gates
Site ID	View Point No.	Easting	Northing	Elevation (AOD)m	Direction-Degrees(N)	Distance (m)		<a href="http://www.entrust-services.com">www.entrust-services.com</a>	Unit 4 Century Building, Liverpool, L3 4BJ
WAM144	VP7	494958	167651	63.5	-8.5	516.1		T: 01925 407 074	Approved by: Kieran Tarpey
Viewing Distance: 300mm			Height above ground: 1.5m						
Page size: A3			Camera & Lens: Canon 6D - 50mm Focal Length						



Wireframe view of Viewpoint 7								Provided by:	Surveyed by:
Site ID	View Point No.	Easting	Northing	Elevation (AOD)m	Direction-Degrees(N)	Distance (m)		<a href="http://www.entrust-services.com">www.entrust-services.com</a>	Neil Gates
WAM144	VP7	494958	167651	63.5	-8.5	516.1		Unit 4 Century Building, Liverpool, L3 4BJ	Created by: Ignatius Lo
Viewing Distance: 300mm			Height above ground: 1.5m					T: 01925 407 074	Approved by: Kieran Tarpey
Page size: A3			Camera & Lens: Canon 6D - 50mm Focal Length						




		Proposed view of Viewpoint 7 (Not Visible)				
Site ID	View Point No.	Easting	Northing	Elevation (AOD)m	Direction-Degrees(N)	Distance (m)
WAM144	VP7	494958	167651	63.5	-8.5	516.1
Viewing Distance: 300mm			Height above ground: 1.5m			
Page size: A3			Camera & Lens: Canon 6D - 50mm Focal Length			

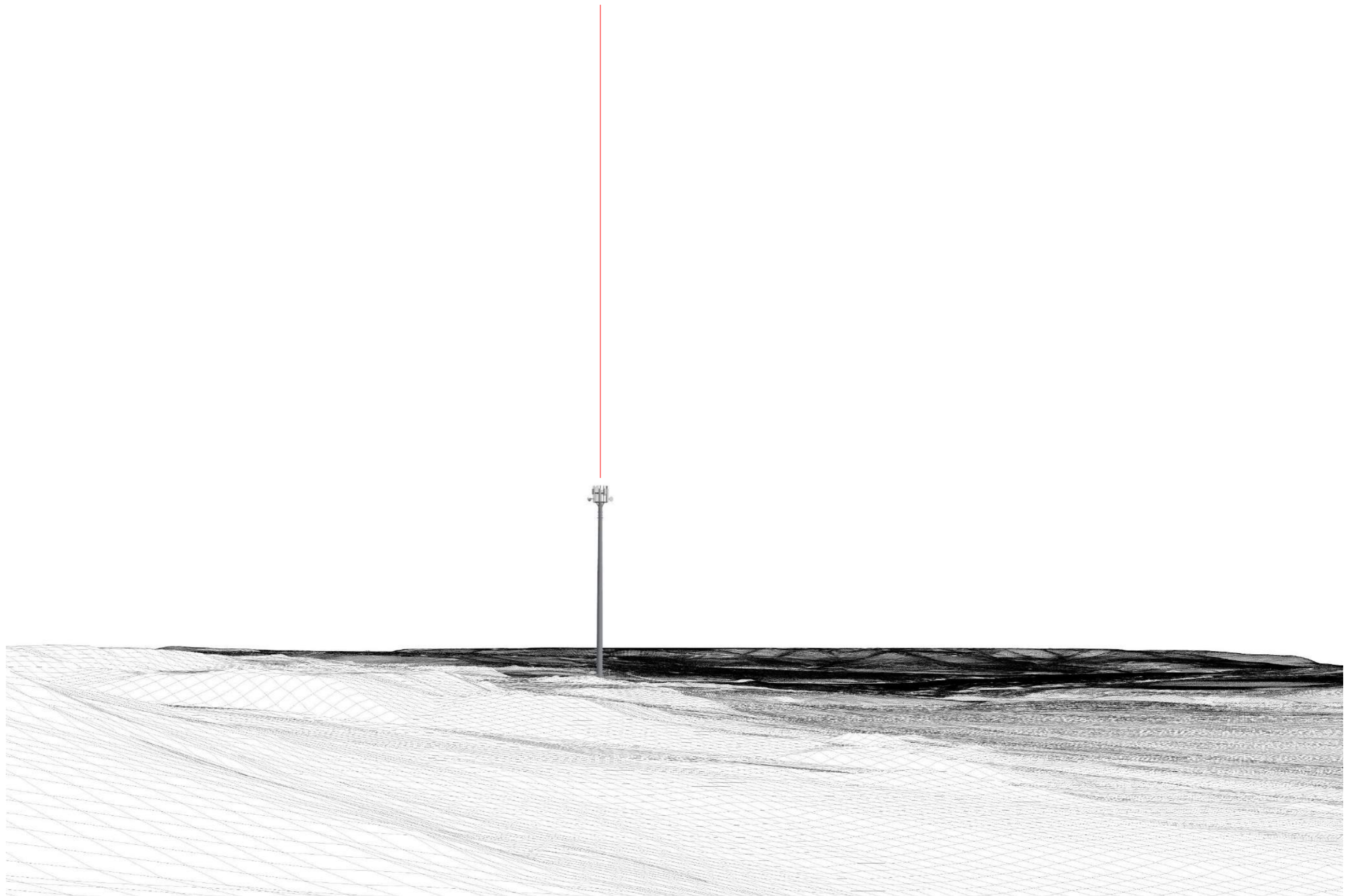



Provided by: <a href="http://www.entrust-services.com">www.entrust-services.com</a>	<b>Surveyed by:</b> Neil Gates
Unit 4 Century Building, Liverpool, L3 4BJ T: 01925 407 074	<b>Created by:</b> Ignatius Lo
	<b>Approved by:</b> Kieran Tarpey




		Existing View of Viewpoint 8						Provided by:	Surveyed by: Neil Gates
Site ID	View Point No.	Easting	Northing	Elevation (AOD)m	Direction-Degrees(N)	Distance (m)		<a href="http://www.entrust-services.com">www.entrust-services.com</a>	Created by: Ignatius Lo
WAM144	VP8	494767	167964	70.1	47.6	284.3		Unit 4 Century Building, Liverpool, L3 4BJ	Approved by: Kieran Tarpey
Viewing Distance: 300mm		Height above ground: 1.5m						T: 01925 407 074	
Page size: A3		Camera & Lens: Canon 6D - 50mm Focal Length							





		Wireframe view of Viewpoint 8						Provided by:	Surveyed by:
Site ID	View Point No.	Easting	Northing	Elevation (AOD)m	Direction-Degrees(N)	Distance (m)		<a href="http://www.entrust-services.com">www.entrust-services.com</a>	Neil Gates
WAM144	VP8	494767	167964	70.1	47.6	284.3		Unit 4 Century Building, Liverpool, L3 4BJ	Created by: Ignatius Lo
Viewing Distance: 300mm		Height above ground: 1.5m						T: 01925 407 074	Approved by: Kieran Tarpey
Page size: A3		Camera & Lens: Canon 6D - 50mm Focal Length							



		Proposed view of Viewpoint 8 (Not Visible)						Provided by:	Surveyed by: Neil Gates
Site ID	View Point No.	Easting	Northing	Elevation (AOD)m	Direction-Degrees(N)	Distance (m)		<a href="http://www.entrust-services.com">www.entrust-services.com</a>	Created by: Ignatius Lo
WAM144	VP8	494767	167964	70.1	47.6	284.3		Unit 4 Century Building, Liverpool, L3 4BJ	Approved by: Kieran Tarpey
Viewing Distance: 300mm		Height above ground: 1.5m						T: 01925 407 074	
Page size: A3		Camera & Lens: Canon 6D - 50mm Focal Length							