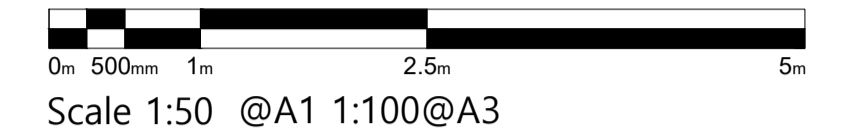


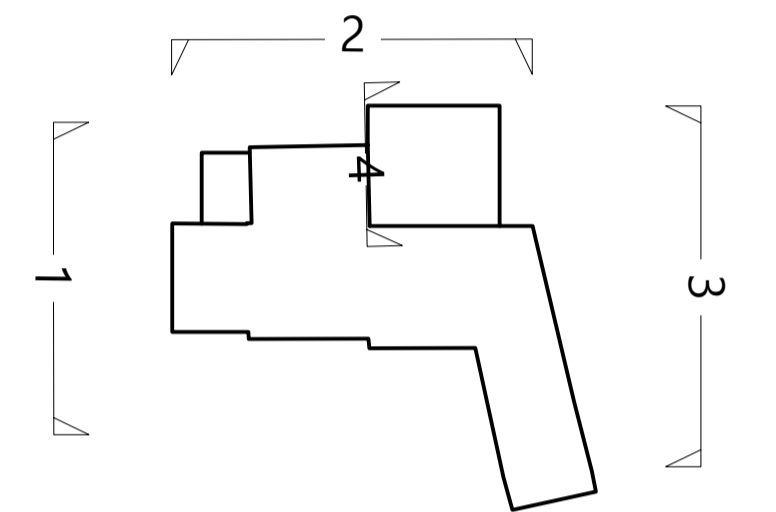
Legend of Proposed Materials

- ① Masonry wall with limestone outer face
- ② Timber structure
- ③ Zinc Quartz seam roof
- ④ Zinc gutter and downpipe
- ⑤ Zinc hopper and downpipe
- ⑥ Conservation rooflight
- ⑦ Powder coated aluminium framed casement
- ⑧ Powder coated aluminium French doors
- ⑨ Powder coated aluminium framed glazing
- ⑩ Wall vent, metal / slate louvre
- ⑪ Zinc SVP cowl
- ⑬ Metal railing
- ⑭ Zinc valley gutter

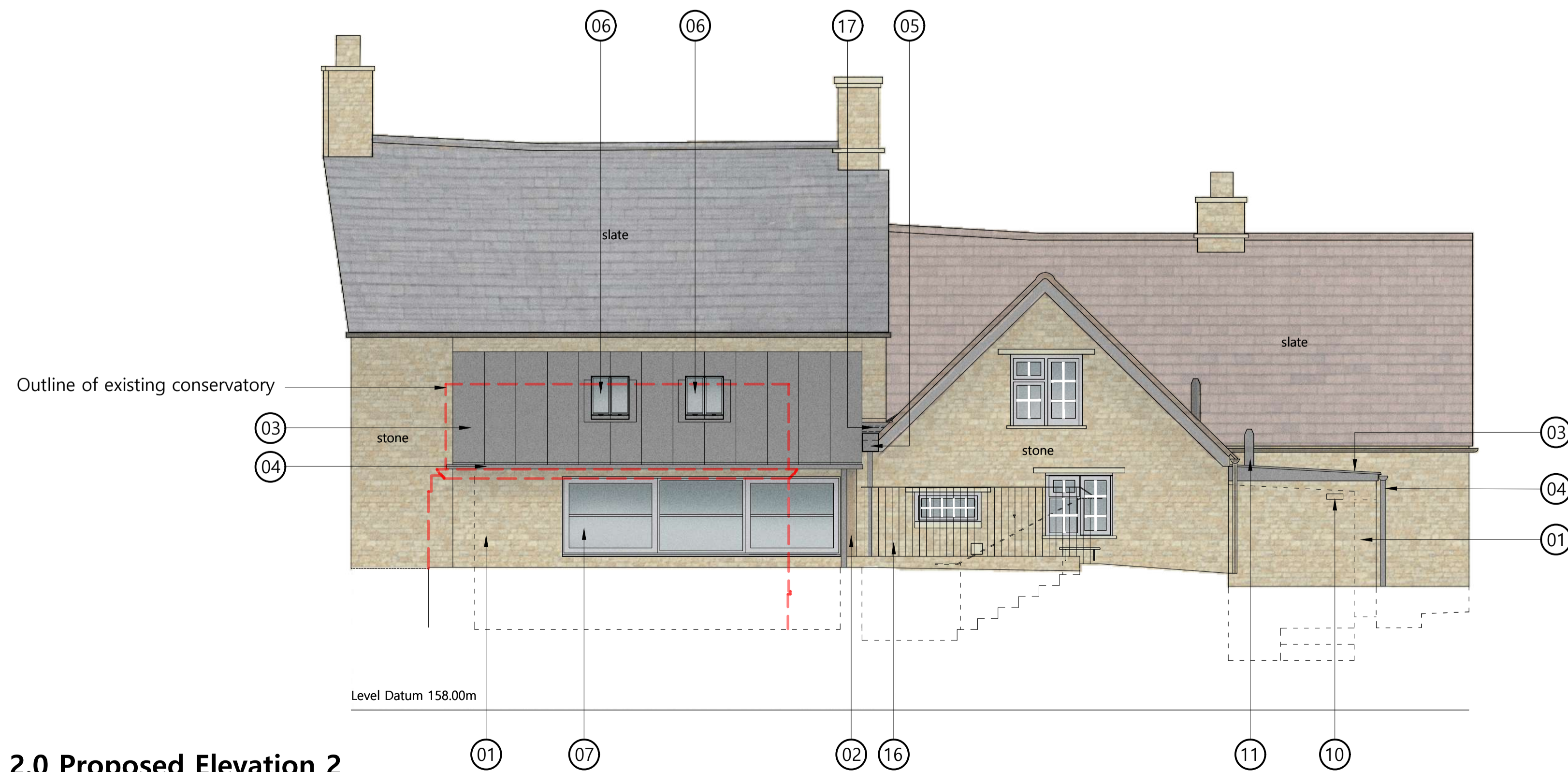


Survey provided by:
Interlock Surveys Ltd.

Key to Elevations
N.T.S.



1.0 Proposed Elevation 1
1:100 @A3



2.0 Proposed Elevation 2
1:100 @A3

A	Sep21	EQ	JPM	En-suite revised
-	Apr21	EQ	JPM	First issue

ISSUE	DATE	DRAWN	CHECKED	DESCRIPTION
-------	------	-------	---------	-------------

PROJECT Barley Cottage

CLIENT Kevin and Lesley Covington

JAMES MACKINTOSH ARCHITECTS

DESIGN / CONSERVATION / HISTORIC INTERIORS

E. studio@jmackintosh.com
T. 01608 692310 W. www.jamesmackintosharchitects.com

DWG TITLE Proposed Elevation 1 and 2

STATUS Planning

JOB/DWG No. 243-205

SCALE 1:50@A1 1:100@A3 REVISION A