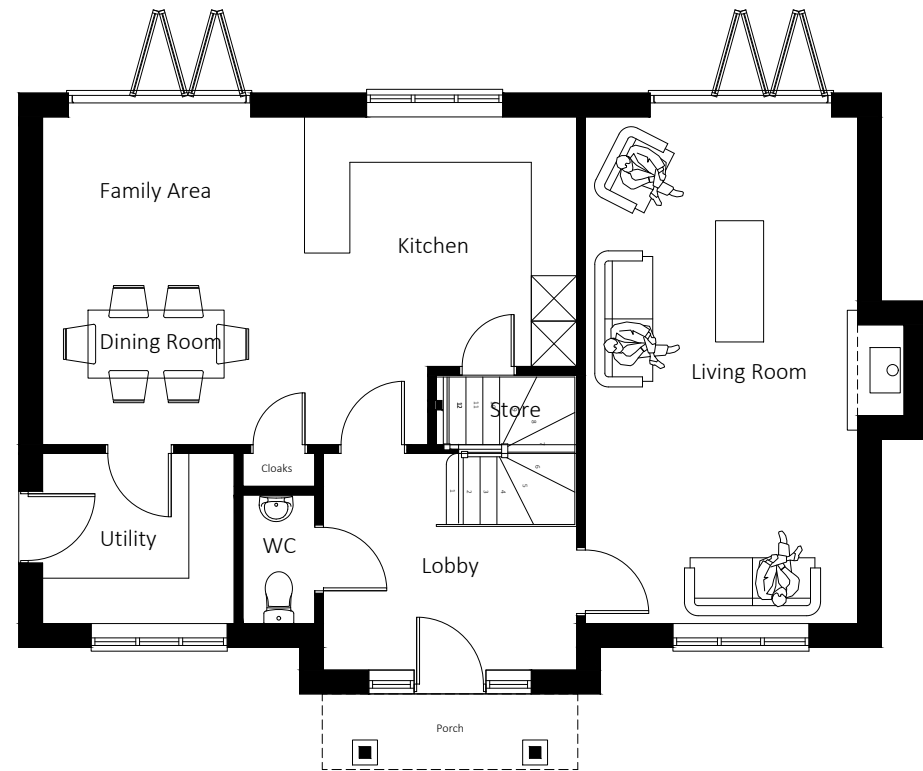
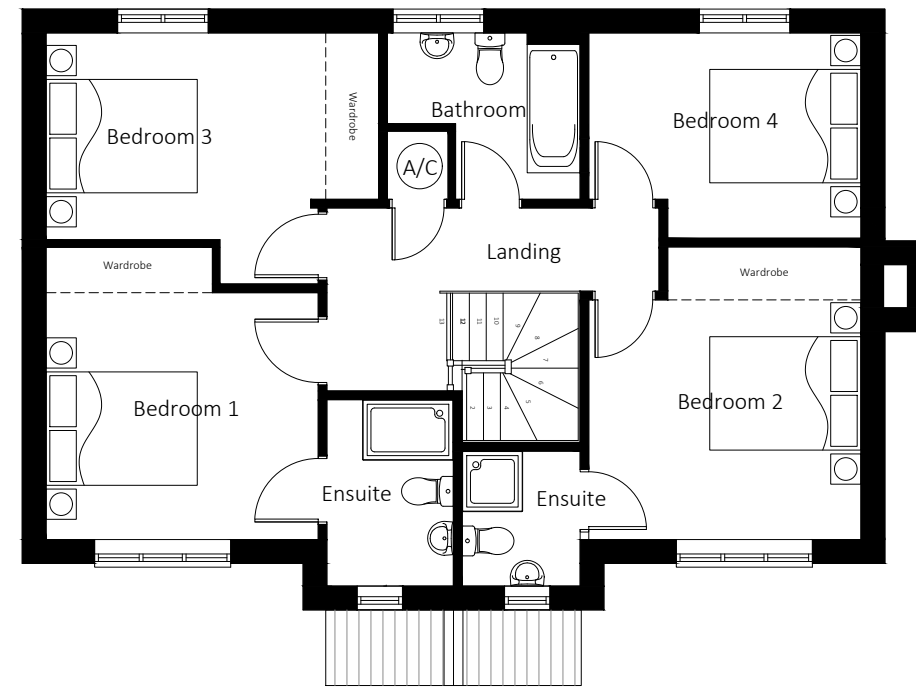


NOTES  
 Do not scale use figured dimensions only. Copyright to Hamco Developments Ltd 2020.



Ground Floor Plan

Gross Internal Area (GIA)  
 148.4 sqm / 1597 sqf



First Floor Plan

revision	description	date

**HAMCO DEVELOPMENTS**  
 Planning | Design | Consultants  
 07734 358703 / 01743 625343  
 www.hamco-developments.co.uk  
 info@hamco-developments.co.uk

Llanidloes  
 Plympton House, 50 Longbridge St,  
 Llanidloes, Powys, SY18 6EF

Shrewsbury  
 28 Kenwood Drive, Shrewsbury,  
 Shropshire, SY3 8SY

working on behalf of



HOGSTOW HALL, MINSTERLEY  
 SHREWSBURY, SHROPSHIRE, SY5 0HZ  
 Tel: 01743 791336 Fax: 01743 792770  
 email: mail@rogerparry.net  
 Web address: www.rogerparry.net

project.  
 Land adjoining 'Trem Hirnant' Manafon,  
 Powys, SY21 8BX

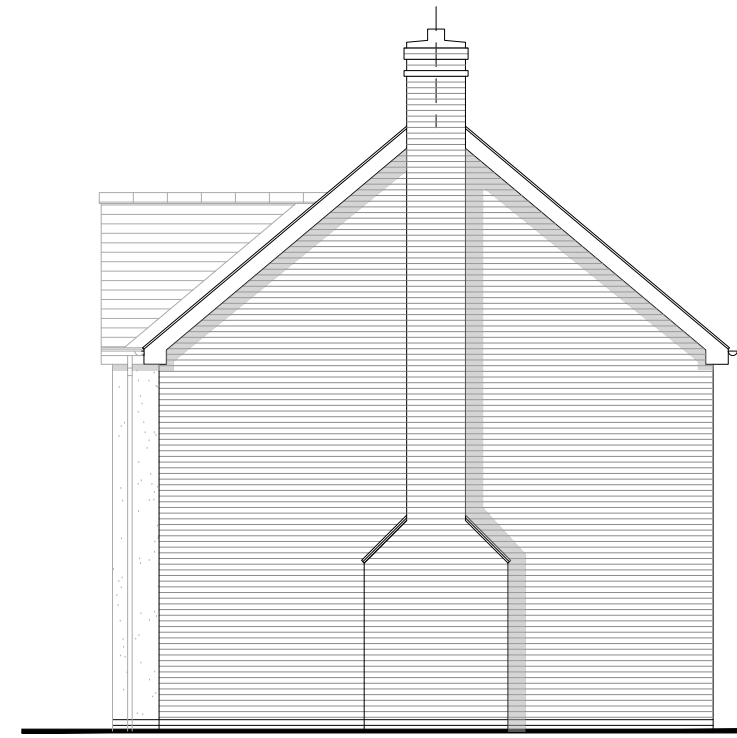
drawing  
 Type C  
 4 Bed Detached Dwelling  
 Plot 5

scale	date	drawn
1:100 @ A3	August 2021	MH

dwg no	rev
0192_HT-C_01	.



Front Elevation



Side Elevation



Rear Elevation



Side Elevation

NOTES

Do not scale use figured dimensions only. Copyright to Hamco Developments Ltd 2020.

revision	description	date

**HAMCO**  
**DEVELOPMENTS**  
 Planning | Design | Consultants  
 07734 358703 / 01743 625343  
 www.hamco-developments.co.uk  
 info@hamco-developments.co.uk

Llanidloes  
 Plympton House, 50 Longbridge St,  
 Llanidloes, Powys, SY18 6EF

Shrewsbury  
 28 Kenwood Drive, Shrewsbury,  
 Shropshire, SY3 8SY

working on behalf of



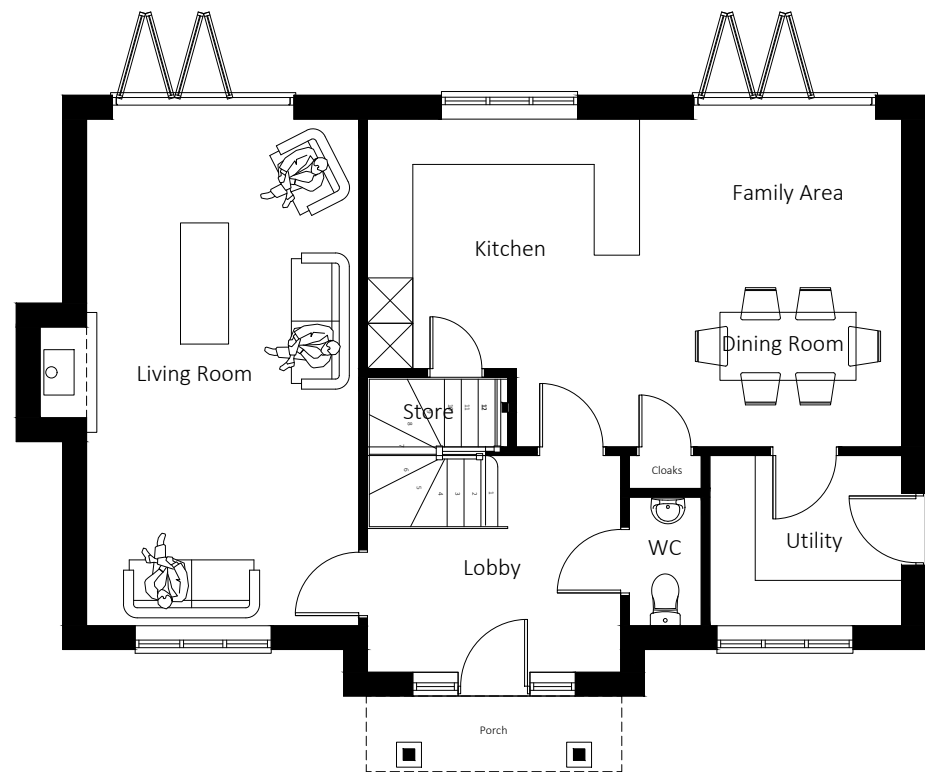
HOGSTOW HALL, MINSTERLEY  
 SHREWSBURY, SHROPSHIRE, SY5 0HZ  
 Tel: 01743 791336 Fax: 01743 792770  
 email: mail@rogerparry.net  
 Web address: www.rogerparry.net

project.  
 Land adjoining 'Trem Hirnant' Manafon,  
 Powys, SY21 8BX

drawing  
 Type C  
 4 Bed Detached Dwelling  
 Plot 5

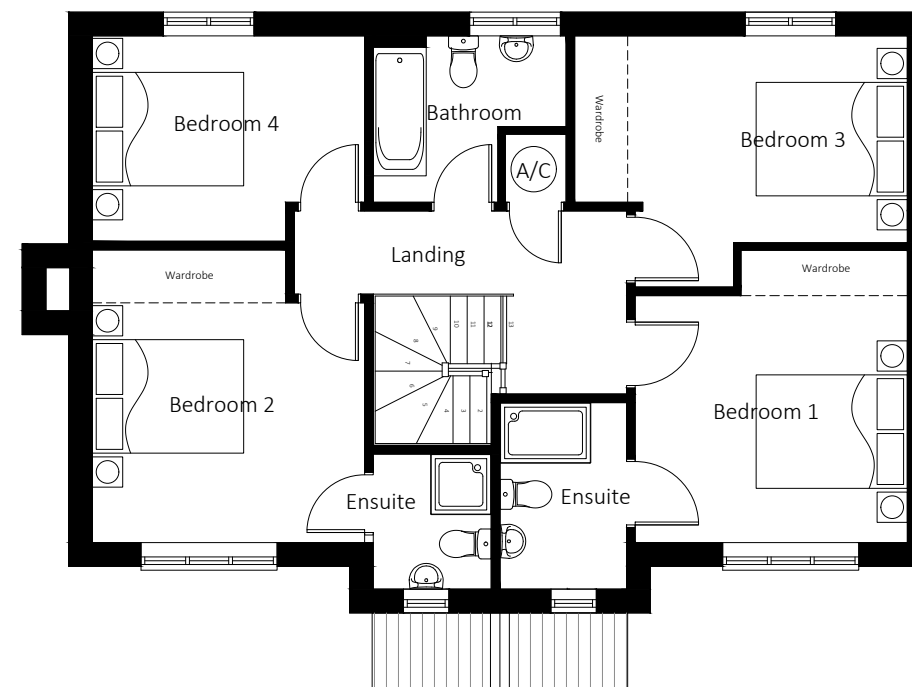
scale	date	drawn
1:100 @ A3	August 2021	MH

drwg no	rev
0192_HT-C_02	.



Ground Floor Plan

Gross Internal Area (GIA)  
148.4 sqm / 1597 sqf



First Floor Plan

NOTES

Do not scale use figured dimensions only. Copyright to Hamco Developments Ltd 2020.

revision	description	date
.	.	.

**HAMCO DEVELOPMENTS**  
Planning | Design | Consultants  
07734 358703 / 01743 625343  
www.hamco-developments.co.uk  
info@hamco-developments.co.uk

Llanidloes  
Plympton House, 50 Longbridge St,  
Llanidloes, Powys, SY18 6EF

Shrewsbury  
28 Kenwood Drive, Shrewsbury,  
Shropshire, SY3 8SY

working on behalf of



HOGSTOW HALL, MINSTERLEY  
SHREWSBURY, SHROPSHIRE, SY5 0HZ  
Tel: 01743 791336 Fax: 01743 792770  
email: mail@rogerparry.net  
Web address: www.rogerparry.net

project.

Land adjoining 'Trem Hirnant' Manafon,  
Powys, SY21 8BX

drawing

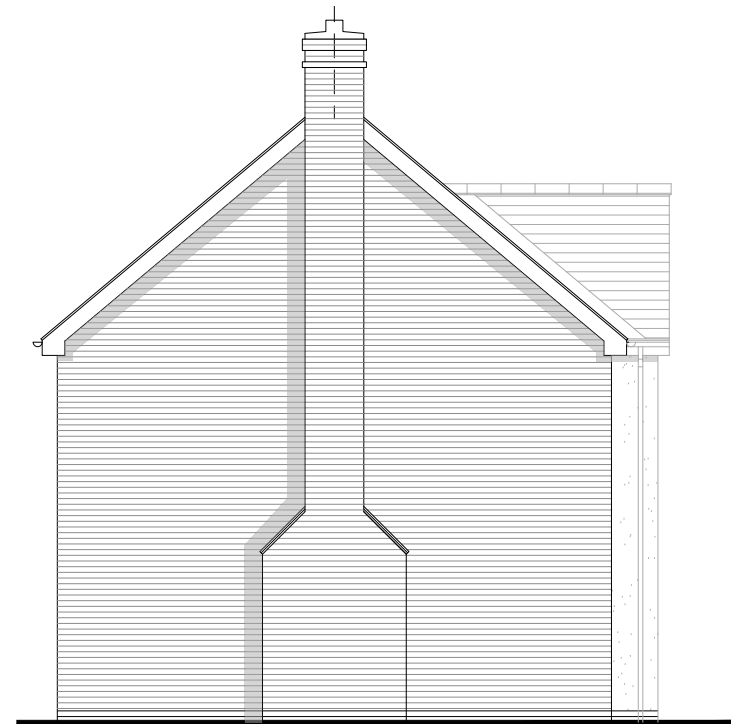
Type C  
4 Bed Detached Dwelling  
Plot 2

scale	date	drawn
1:100 @ A3	August 2021	MH

dwg no	rev
0192_HT-C_03	.



Front Elevation



Side Elevation



Rear Elevation



Side Elevation

NOTES

Do not scale use figured dimensions only. Copyright to Hamco Developments Ltd 2020.

revision	description	date

**HAMCO**  
**DEVELOPMENTS**  
 Planning | Design | Consultants  
 07734 358703 / 01743 625343  
 www.hamco-developments.co.uk  
 info@hamco-developments.co.uk

Llanidloes  
 Plymilton House, 50 Longbridge St,  
 Llanidloes, Powys, SY18 6EF

Shrewsbury  
 28 Kenwood Drive, Shrewsbury,  
 Shropshire, SY3 8SY

working on behalf of



HOGSTOW HALL, MINSTERLEY  
 SHREWSBURY, SHROPSHIRE, SY5 0HZ  
 Tel: 01743 791336 Fax: 01743 792770  
 email: mail@rogerparry.net  
 Web address: www.rogerparry.net

project.  
 Land adjoining 'Trem Hirnant' Manafon,  
 Powys, SY21 8BX

drawing  
 Type C  
 4 Bed Detached Dwelling  
 Plot 2

scale	date	drawn
1:100 @ A3	August 2021	MH

dwg no	rev
0192_HT-C_04	.