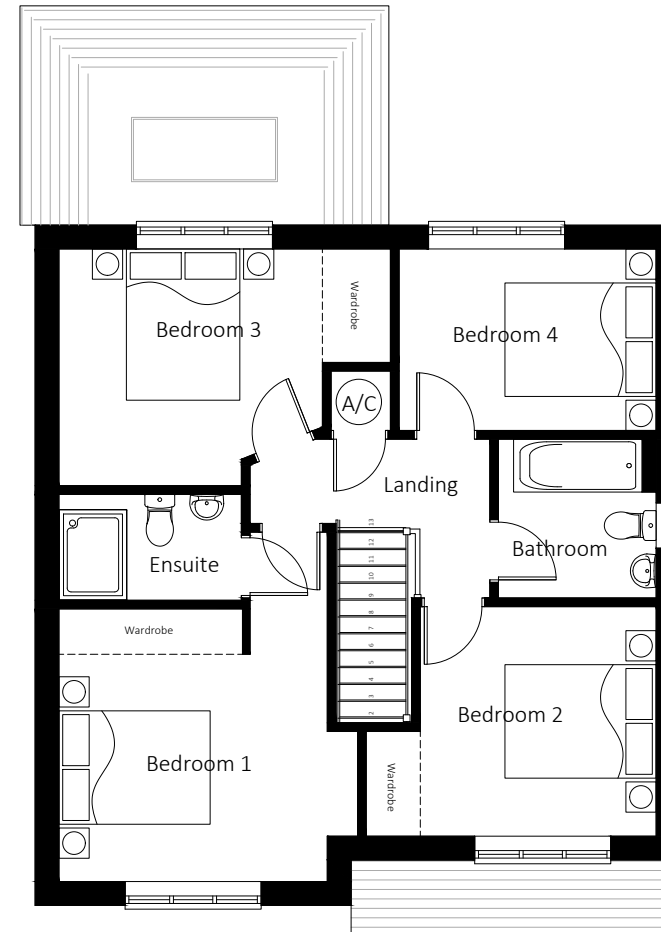


Ground Floor Plan

Gross Internal Area (GIA)
147.6 sqm / 1588 sqf



First Floor Plan

NOTES

Do not scale use figured dimensions only. Copyright to Hamco Developments Ltd 2020.

revision	description	date

HAMCO DEVELOPMENTS
Planning | Design | Consultants
07734 358703 / 01743 625343
www.hamco-developments.co.uk
info@hamco-developments.co.uk

Llanidloes
Plympton House, 50 Longbridge St,
Llanidloes, Powys, SY18 6EF

Shrewsbury
24 Kenwood Drive, Shrewsbury,
Shropshire, SY3 8SY

working on behalf of



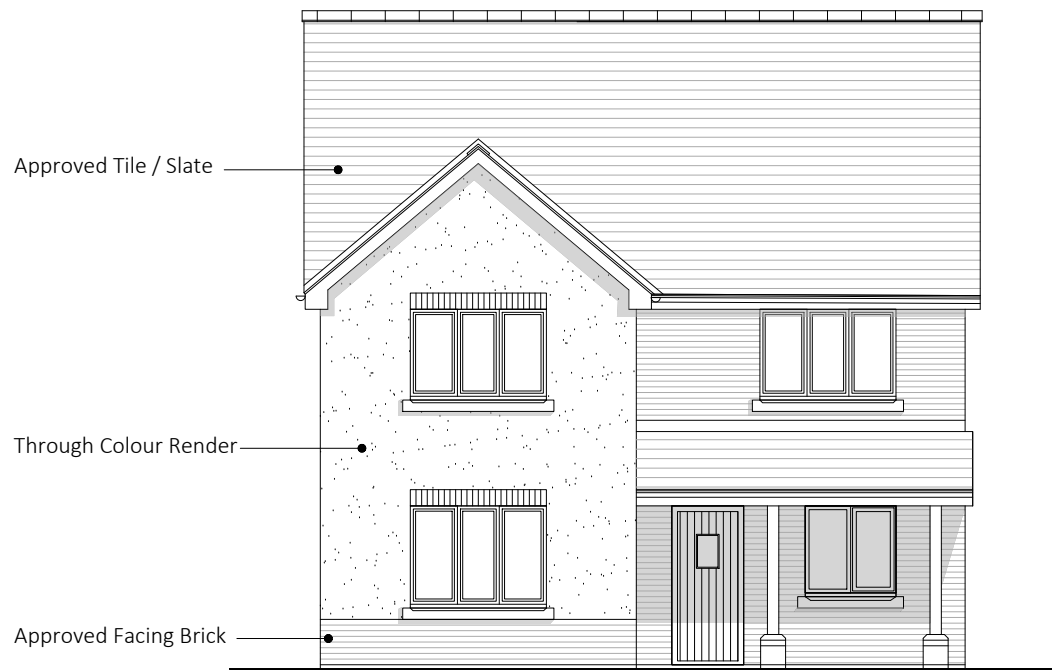
HOGSTOW HALL, MINSTERLEY
SHREWSBURY, SHROPSHIRE, SY5 0HZ
Tel: 01743 791336 Fax: 01743 792770
email: mail@rogerparry.net
Web address: www.rogerparry.net

project.
Land adjoining 'Trem Hirnant' Manafon,
Powys, SY21 8BX

drawing
Type D
4 Bed Detached Dwelling
Plots 1 & 4

scale	date	drawn
1:100 @ A3	August 2021	MH

dwg no	rev
0192_HT-D_01	.



Approved Tile / Slate

Through Colour Render

Approved Facing Brick

Front Elevation



Side Elevation



Rear Elevation



Side Elevation

NOTES

Do not scale use figured dimensions only. Copyright to Hamco Developments Ltd 2020.

revision	description	date
.	.	.

HAMCO
 DEVELOPMENTS
 Planning | Design | Consultants
 07734 358703 / 01743 625343
 www.hamco-developments.co.uk
 info@hamco-developments.co.uk

Llanidloes
 Plympton House, 50 Longbridge St,
 Llanidloes, Powys, SY18 6EF

Shrewsbury
 28 Kenwood Drive, Shrewsbury,
 Shropshire, SY3 8SY

working on behalf of



HOGSTOW HALL, MINSTERLEY
 SHREWSBURY, SHROPSHIRE, SY5 0HZ
 Tel: 01743 791336 Fax: 01743 792770
 email: mail@rogerparry.net
 Web address: www.rogerparry.net

project.

Land adjoining 'Trem Hirnant' Manafon,
 Powys, SY21 8BX

drawing

Type D
 4 Bed Detached Dwelling
 Plots 1 & 4

scale	date	drawn
1:100 @ A3	August 2021	MH

dwg no	rev
0192_HT-D_02	.