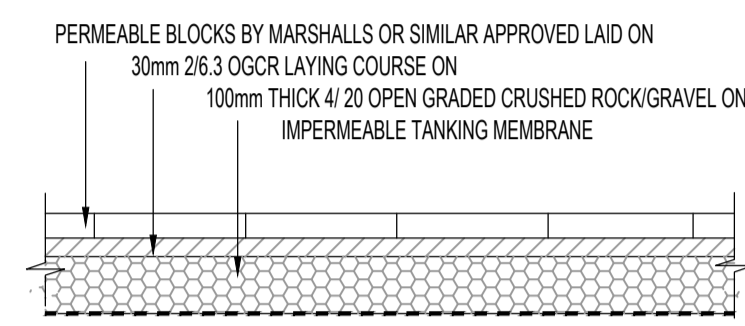
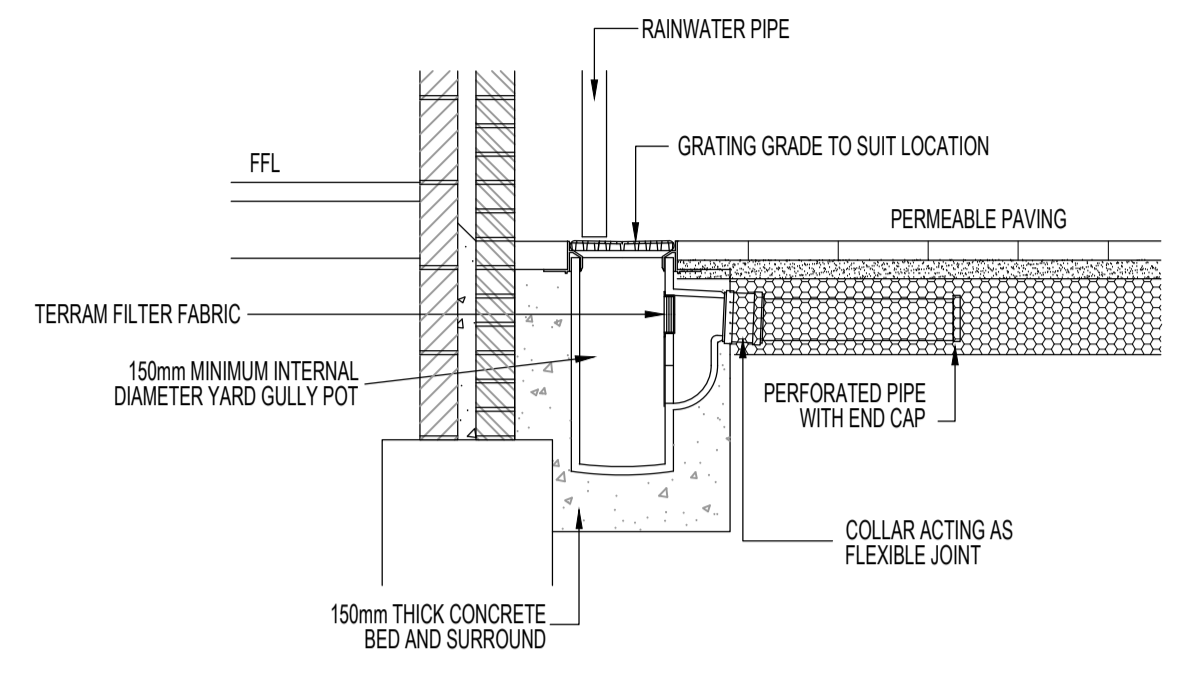


TYPICAL INSPECTION CHAMBER - TYPE E (FLEXIBLE MATERIAL)
 DEPTH FROM COVER TO SOFFIT OF PIPE UP TO 2m
 FLEXIBLE MATERIAL FOR USE IN DRIVEWAYS/PAVED AREAS
 SCALE 1:20

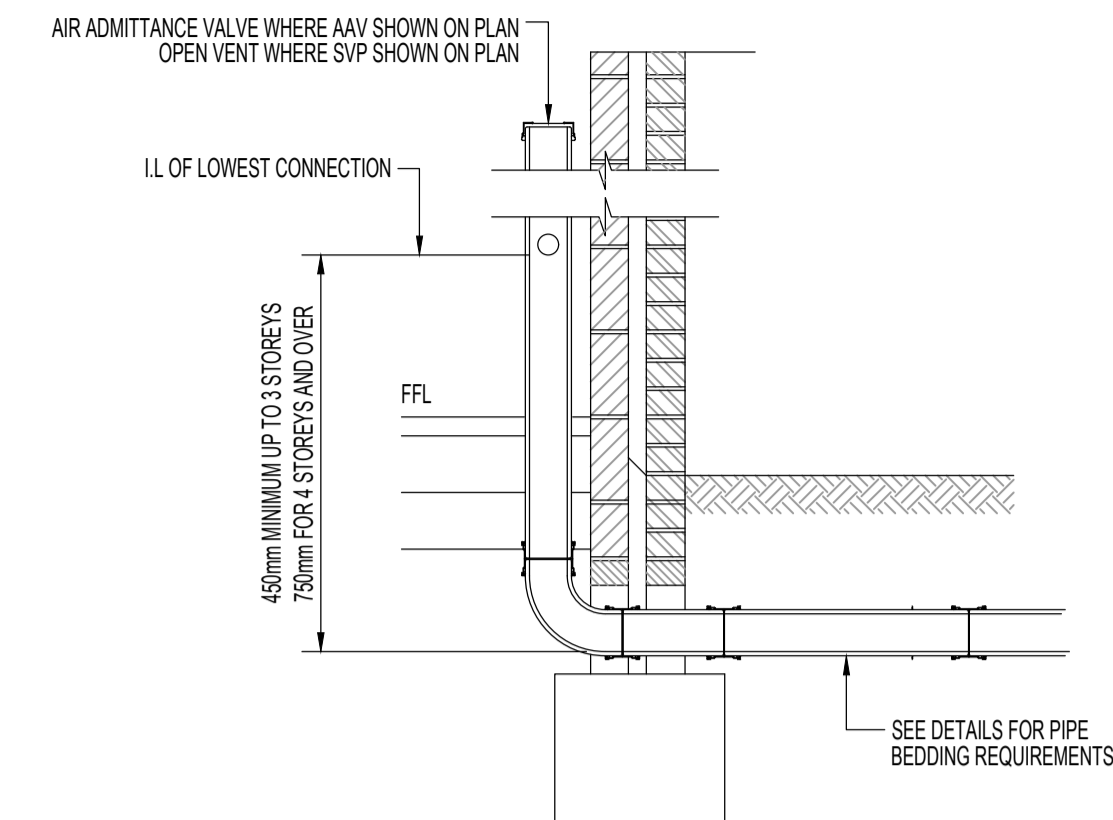


PERMEABLE PAVING- PATH/PATIO TYPE C- NON INFILTRATION
 1:20

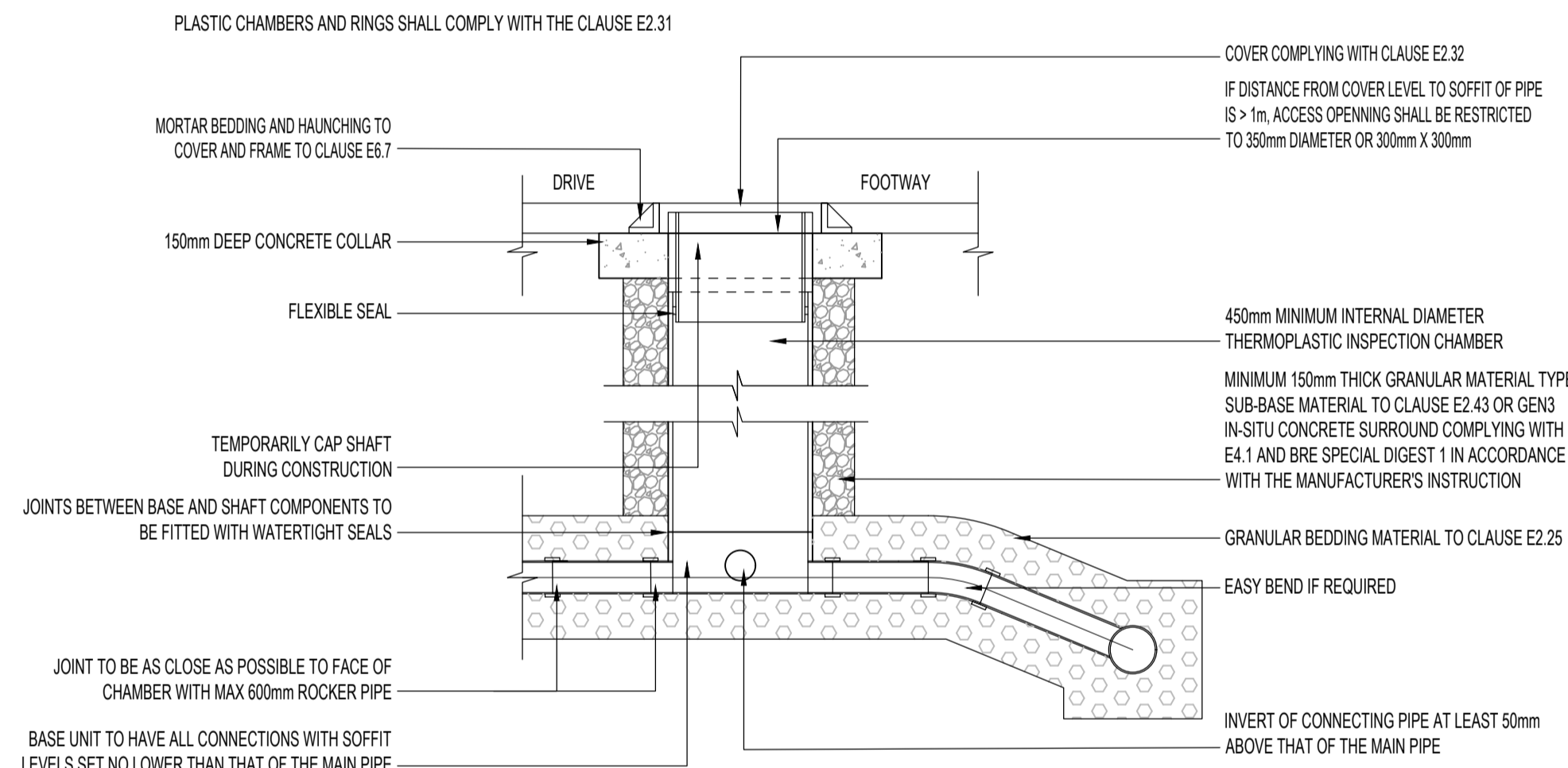
1. ALL MANUFACTURERS PAVING AND ASSOCIATED PRODUCTS TO BE INSTALLED TO MANUFACTURERS GUIDELINES.
2. 2/6.3 AND 4/20 OPEN GRADED CRUSHED ROCK/GRAVEL MATERIAL TO BE TO BS EN 12620.
3. IMPERMEABLE TANKING MEMBRANE TO MANUFACTURERS DETAILS.



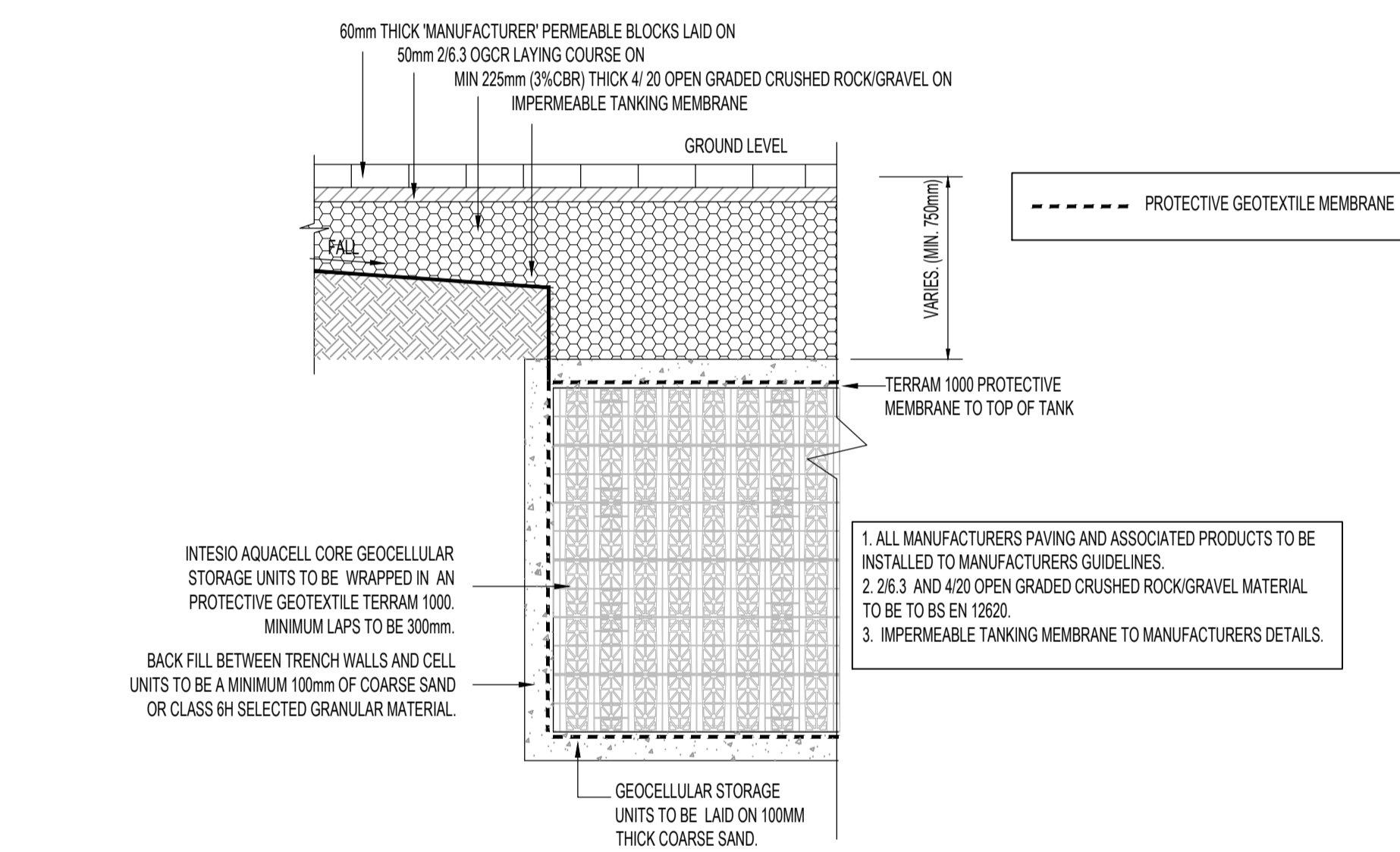
TYPICAL RAINWATER PIPE CONNECTION DETAIL IN TO YARD GULLY POT
 SCALE 1:20



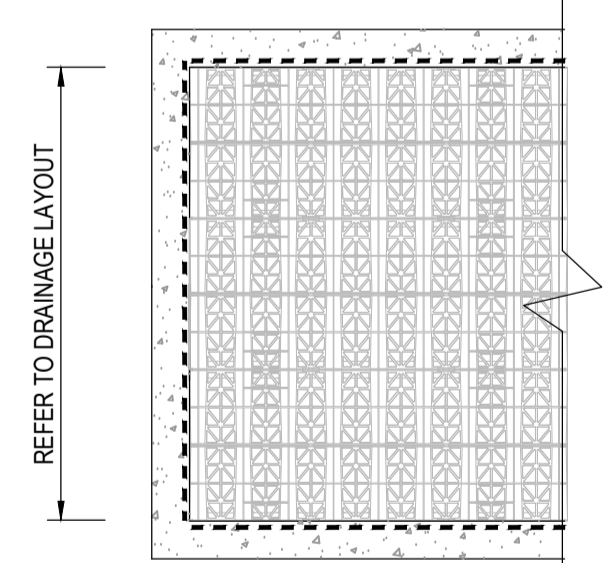
TYPICAL SOIL AND VENT PIPE CONNECTION DETAIL
 SCALE 1:20



TYPICAL INSPECTION CHAMBER - TYPE D
 DEPTH FROM COVER TO SOFFIT OF PIPE UP TO 2m
 FLEXIBLE MATERIAL CONSTRUCTION FOR USE IN DOMESTIC DRIVEWAYS OR FOOTWAYS
 SCALE 1:20



SECTIONAL ELEVATION



PLAN

GEOCELLULAR SOAKAWAY UNDER TYPE C (NON INFILTRATION) PERMEABLE BLOCK PAVING - PRIVATE DRIVEWAY
 N.T.S.

MINIMUM SUB-BASE THICKNESS FOR PAVED AREAS

CBR VALUE	MINIMUM THICKNESS (mm) OF SUB-BASE (Consolidated in accordance with MCHW Volume 1 Clause 801, Table 8/1)	
	WITHOUT GEOTEXTILE UNDERNEATH	WITH GEOTEXTILE UNDERNEATH
< 2.0%	N/A	300 mm
2.0% - 3.0%	325 mm	225 mm
3.0% - 5.0%	250 mm	150 mm
5.0% - 7.0%	150 mm	150 mm
7.0% - 20.0%	100 mm	100 mm

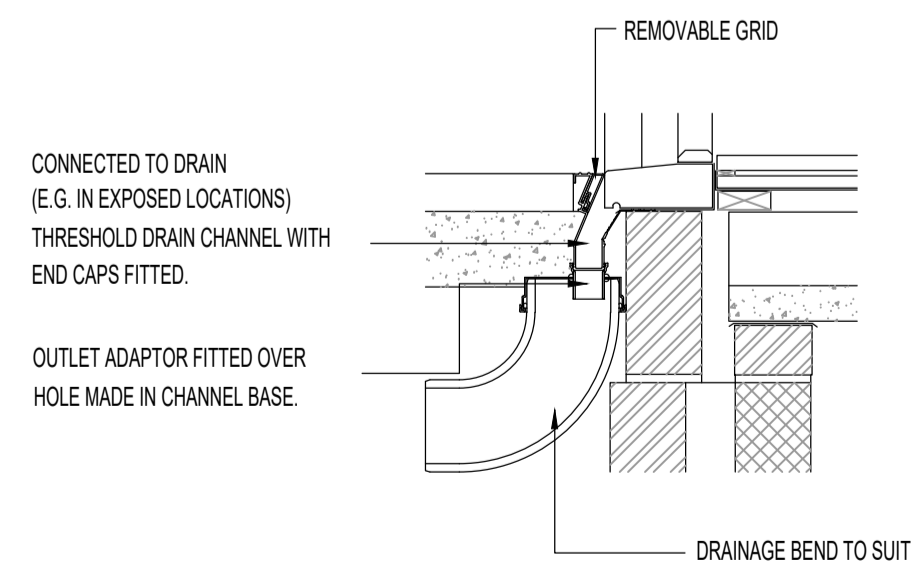
THE THICKNESS OF ANY REQUIRED CAPPING LAYER AND THE SUB-BASE SHOULD BE DETERMINED AFTER INVESTIGATION AND ON-SITE TESTS HAVE BEEN CARRIED OUT RELATING TO THE CBR VALUE AND FROST SUSCEPTIBILITY OF THE SUB-GRADE.

WHERE TESTS INDICATE THAT THE SUB-GRADE IS FROST SUSCEPTIBLE A SUITABLE CAPPING LAYER SHOULD BE INCLUDED BELOW THE SUB-BASE, TO A DEPTH THAT WILL ENSURE THAT THE CONSTRUCTION WILL NOT BE AFFECTED BY FROST HEAVE.

THE GEOTEXTILE SHALL BE A NON WOVEN GEOTEXTILE EARTHWORKS SEPARATION LAYER (TERRAM 1000 OR SIMILAR)

1. ALL MANUFACTURERS PAVING AND ASSOCIATED PRODUCTS TO BE INSTALLED TO MANUFACTURERS GUIDELINES.
2. 2/6.3 AND 4/20 OPEN GRADED CRUSHED ROCK/GRAVEL MATERIAL TO BE TO BS EN 12620.
3. IMPERMEABLE TANKING MEMBRANE TO MANUFACTURERS DETAILS.

Detail added by Santi
 NAME CODE: SOAKPOR



TYPICAL THRESHOLD DRAIN DETAIL
 SCALE NTS

DETAIL APPLIES TO ALL LEVEL THRESHOLDS

- Notes:**
1. DO NOT SCALE FROM THIS DRAWING.
 2. THIS DRAWING IS TO BE READ IN CONJUNCTION WITH ALL OTHER DRAWINGS AND SPECIFICATIONS ASSOCIATED WITH THIS PROJECT.

A	FOR APPROVAL	SBR	CJM	11.06.21
Rev	Description	Drn	Chk	Date

BdR
 Civil & Structural Engineering Consultants
 The Old Engine House, Goblands Farm Business Park
 Court Lane, Hadlow, Kent, TN11 0DP
 Tel 01732 851416
 email: engineering@bdr.uk.com

Client
Mr S RUTHERFORD

Project
LAND BETWEEN 10&14 VICTORIA ROAD, ERITH, KENT, DA8 3AN

Drawing
DRAINAGE CONSTRUCTION DETAILS

FOR APPROVAL

Scale @ A1 1:20	Date 10.06.21	Drawn by SBR	Checked CJM
Job No. 21-0358	Drg. No. C10551	Rev A	