



# ENCHANTED CREATIONS

WOODLAND CHASE 'HIDE CABIN'

CONCEPT DESIGN PROPOSAL

2021



*We looked to simple bird and wildlife hides for a starting point to this project, with a dual meaning for us: both a way to observe nature and wildlife with minimal disturbance, and as the concept of a hide-away, an escape.*

*A clear vernacular for these kind of buildings exists in the simple, humble and functional form, with minimal detailing externally, and long narrow windows framing very specific landscape views and reducing impact on nature. This provides an interesting architectural feature to work with. Our concept of 'THE HIDE' is that we let the simplicity and act of hiding away do the speaking with a sense of calm and focusing the attention to the landscape.*



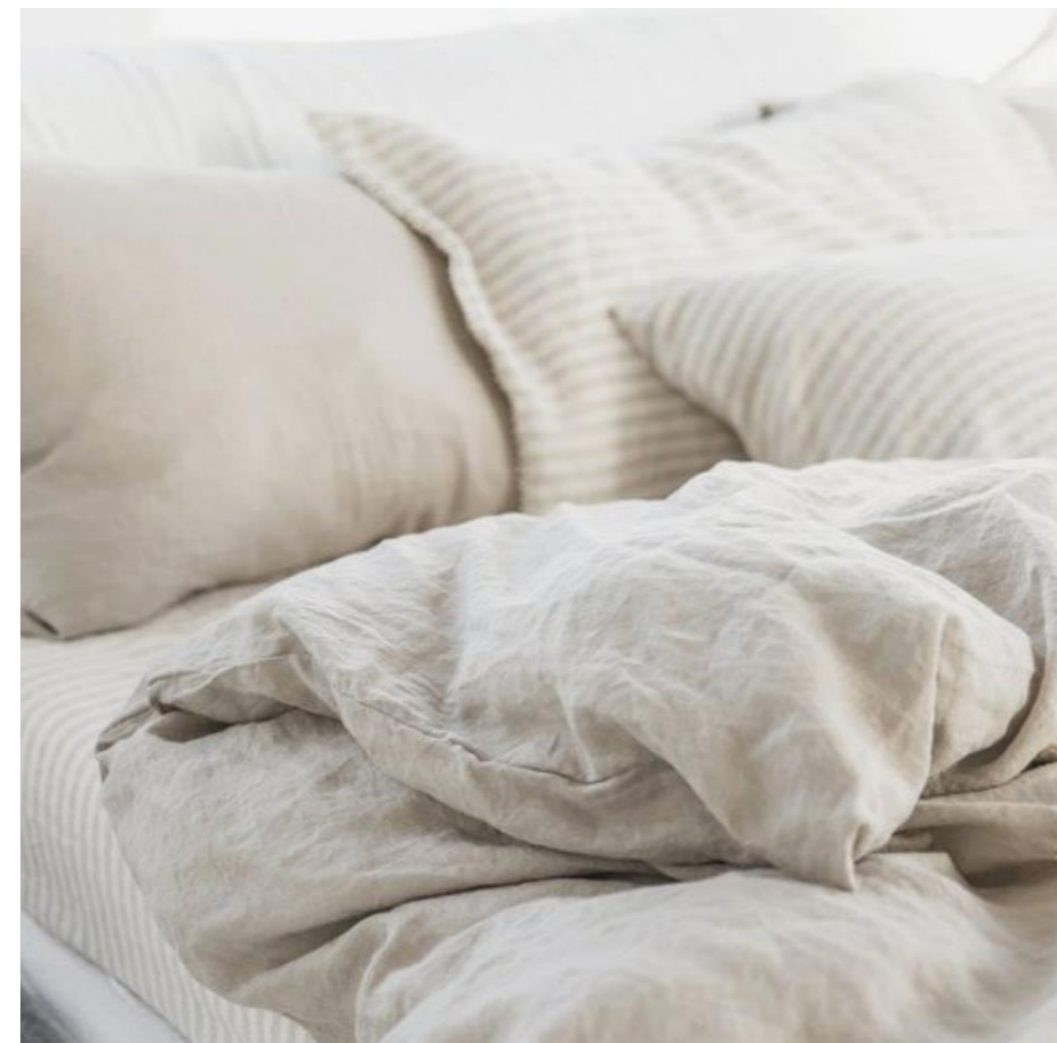


*It will be important to create something that feels authentic and cohesive, rather than themed. We proposed a blend of simply used timber boards for warmth, possibly Russwood Scotlarch with clean lines and subtle details. Blended with this would be moments of carefully integrated characterful timber such as large branches/trunks used for support posts and stair balustrade.*

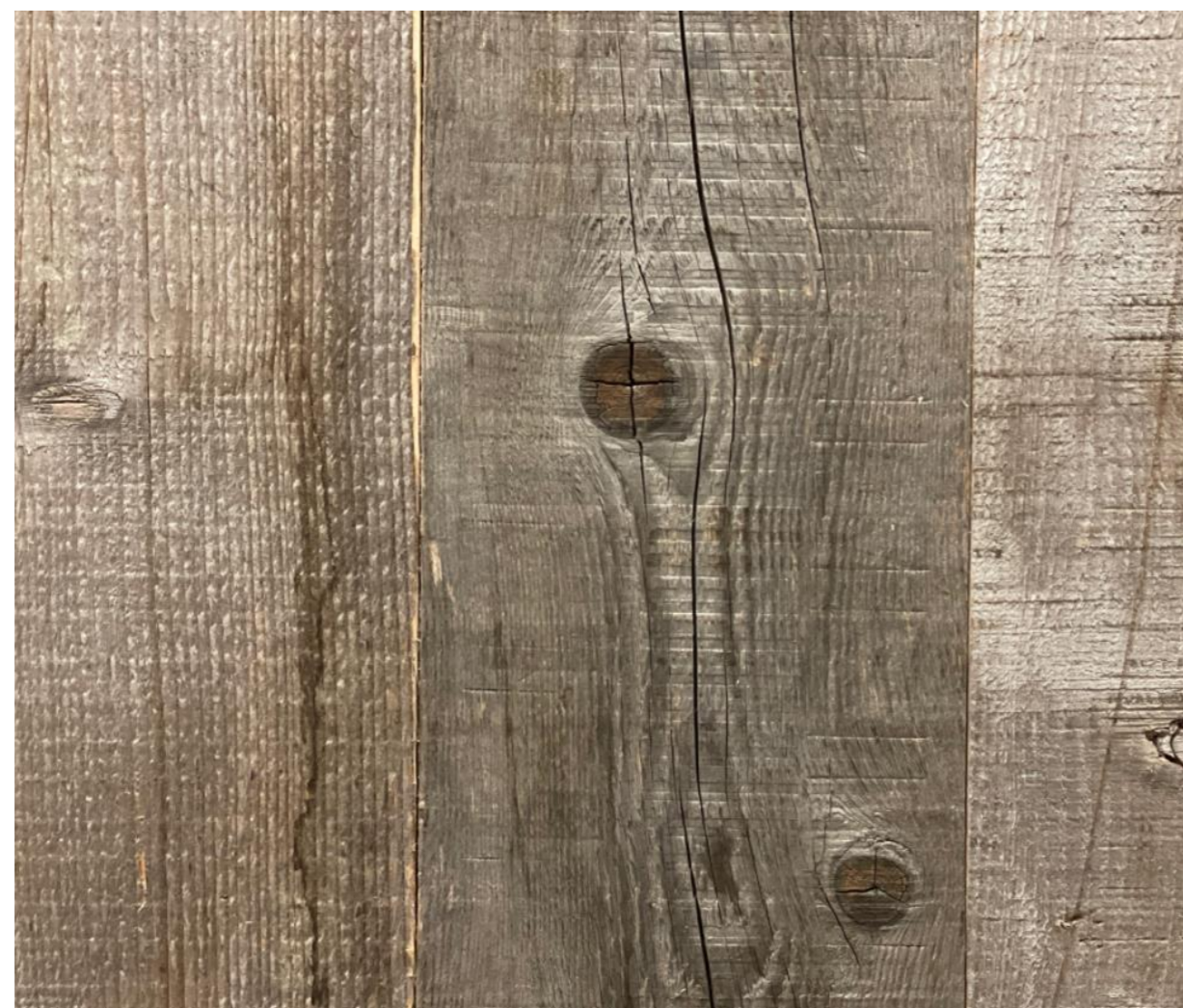
*Together with honest moments such as exposed copper pipework, a patinated copper bath and stonewashed linens, we will create a peaceful, earthy, natural escape in a beautiful setting, highly photogenic and serene.*

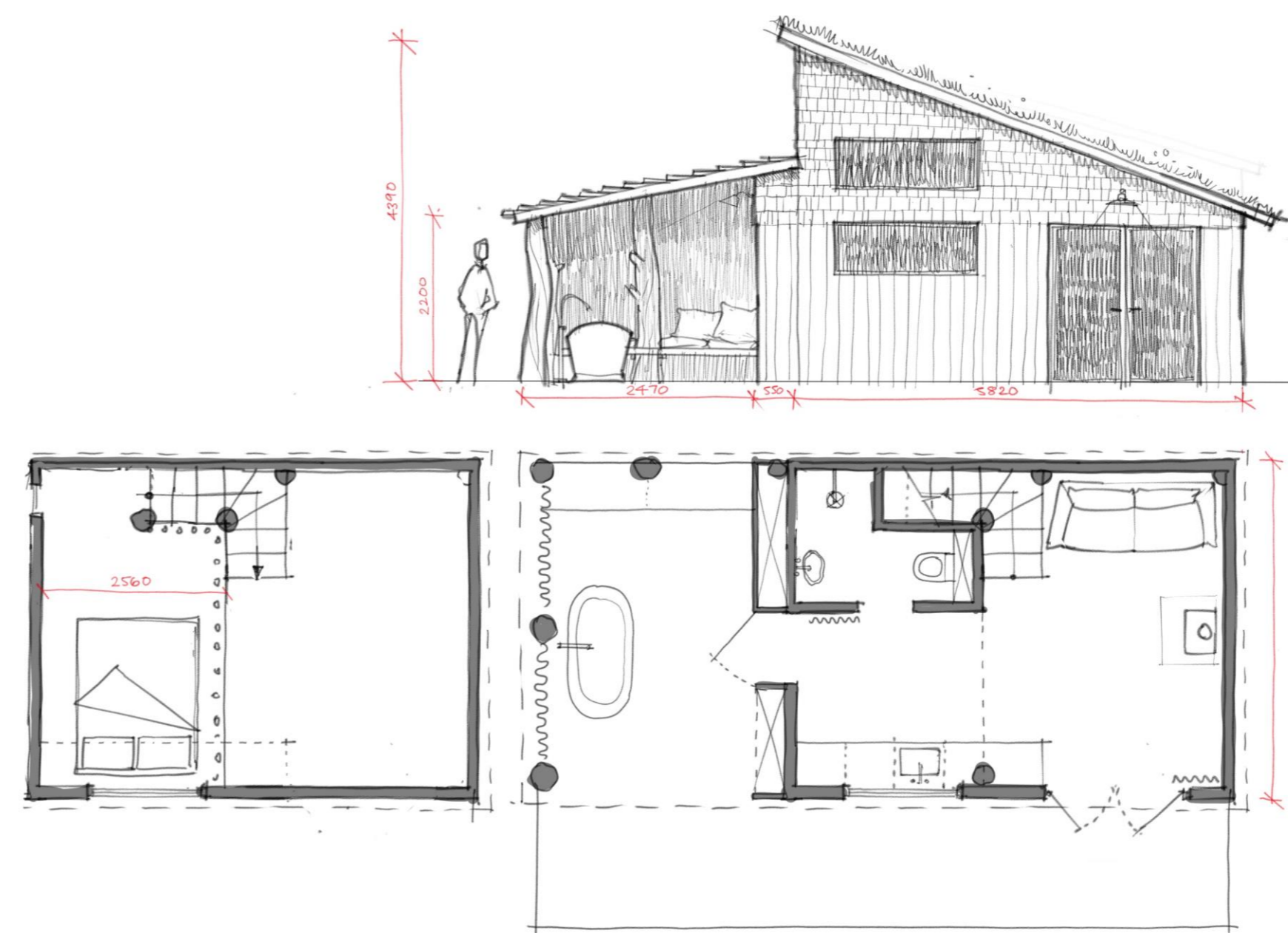
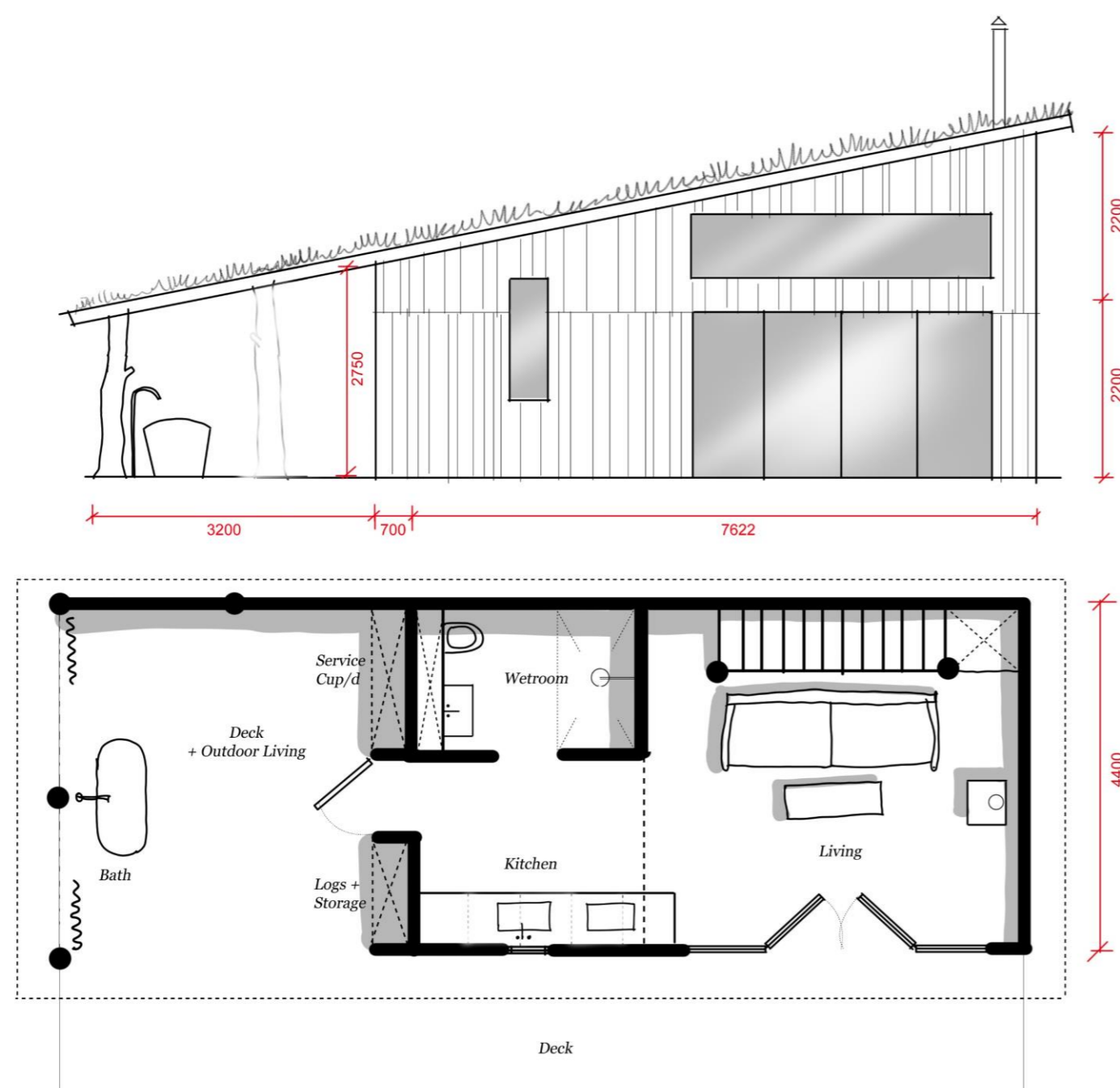


· Timeless · No Clutter · Restrained · High Quality · Understated Luxury · Characterful Timber · Balanced · Fresh · Authentic · Subtle Details ·

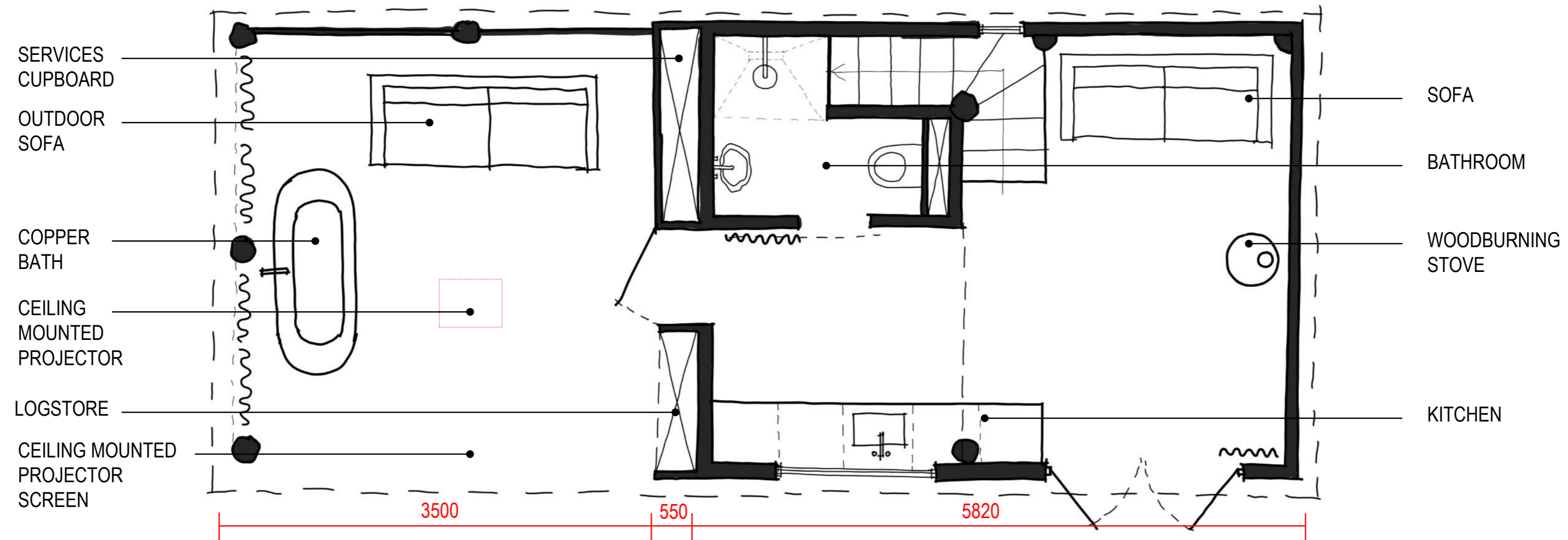


· Timeless · No Clutter · Restrained · High Quality · Understated Luxury · Characterful Timber · Balanced · Fresh · Authentic · Subtle Details ·

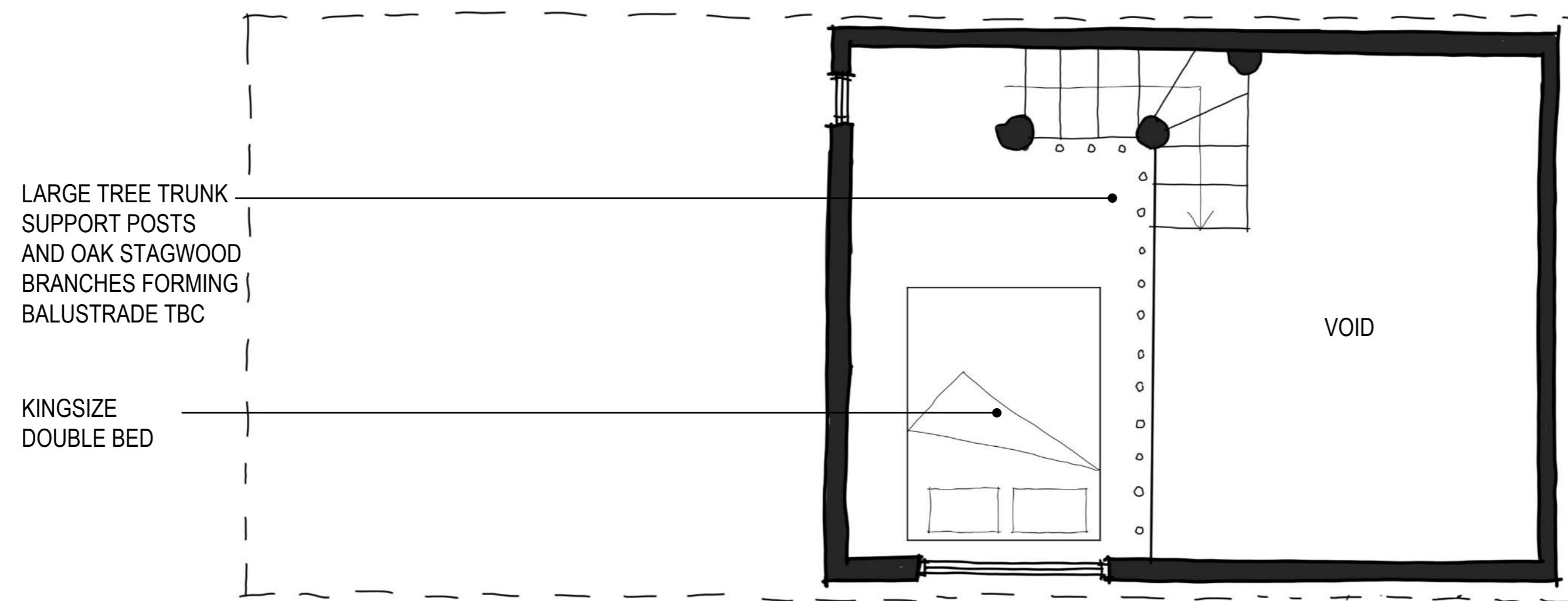




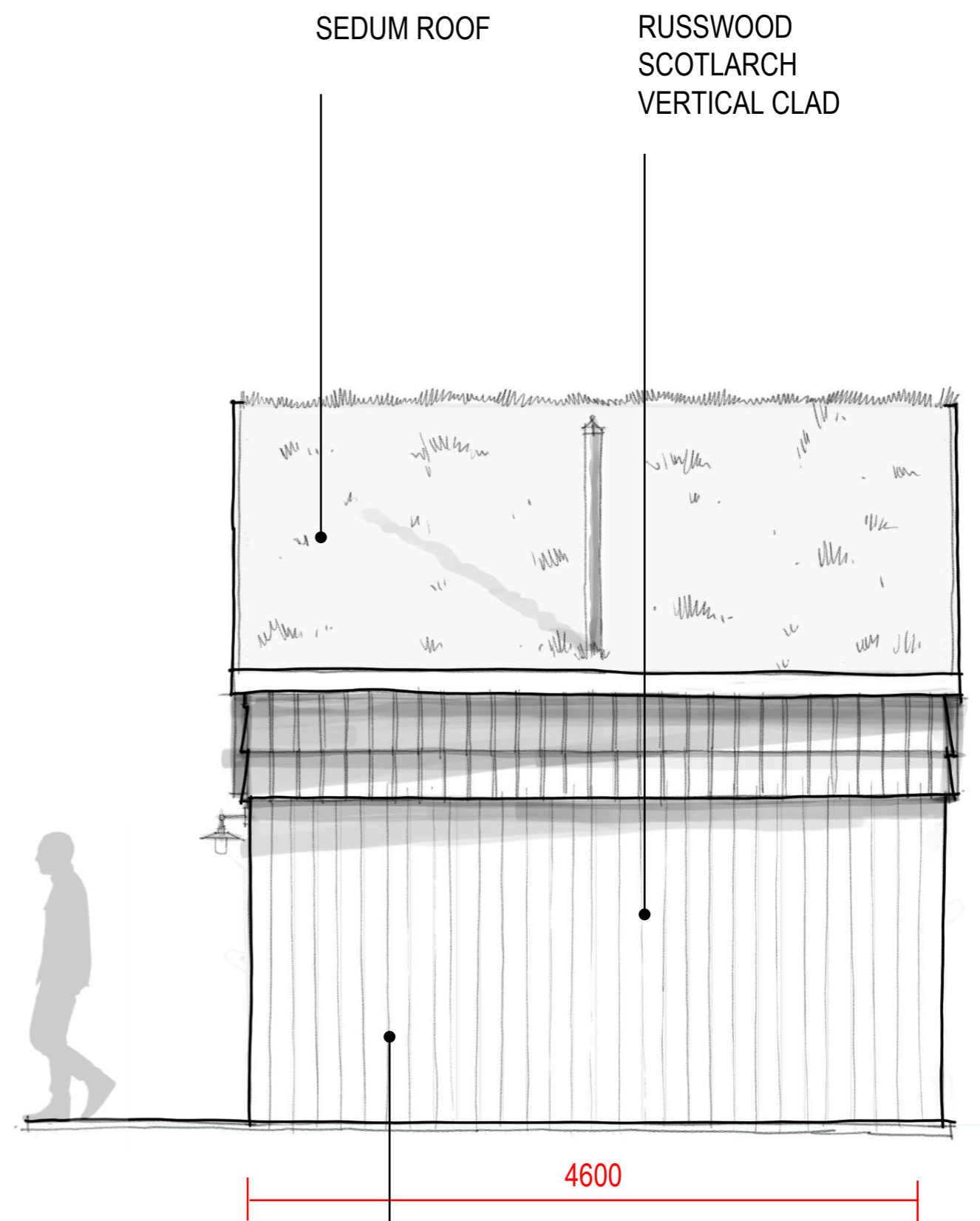
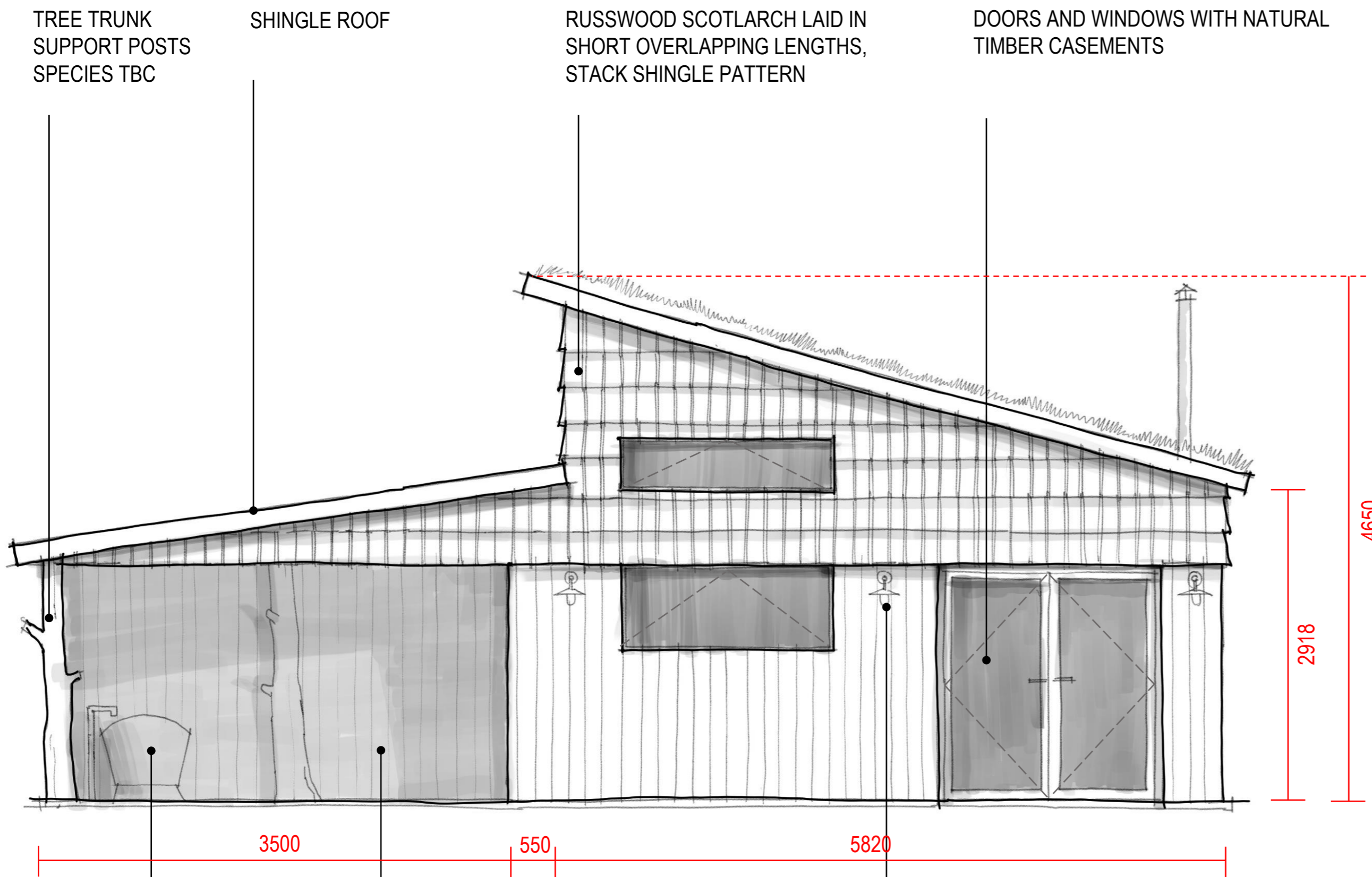
*We have been through several variations to arrive at the final form of the cabin, taking into account the client's initial vision for a single monopitch roof plane covered in grass. To suit the orientation of the cabin in the context of the landscape and site, we have now arrived at a split roof structure, with enough first floor headroom to create a compact and embracing sleeping area. The lean-to effect of the outdoor living space now adds to the charm of the building, helping break up straight lines and avoiding an oversized structure. The spine of the building still exists, the clear vision from bath through to fireplace, right through the centre of the space, ensuring a sense of connection to the outdoor space and additional warmth and romance from the bath. The over-riding concept of 'hide' and 'hidden' has informed a sense of subtle design, nothing over the top or shouting for attention, a serene and calm space to relax.*



GROUND FLOOR LAYOUT



FIRST FLOOR LAYOUT



TREE TRUNK  
SUPPORT POSTS  
SPECIES TBC

SHINGLE ROOF

RUSSWOOD SCOTLARCH LAID IN  
SHORT OVERLAPPING LENGTHS,  
STACK SHINGLE PATTERN

DOORS AND WINDOWS WITH NATURAL  
TIMBER CASEMENTS

SEDUM ROOF

RUSSWOOD  
SCOTLARCH  
VERTICAL CLAD

3500

550

5820

2918

4650

4600

COPPER BATH

OUTDOOR LIVING  
SPACE

3NO. OUTDOOR  
LIGHTS

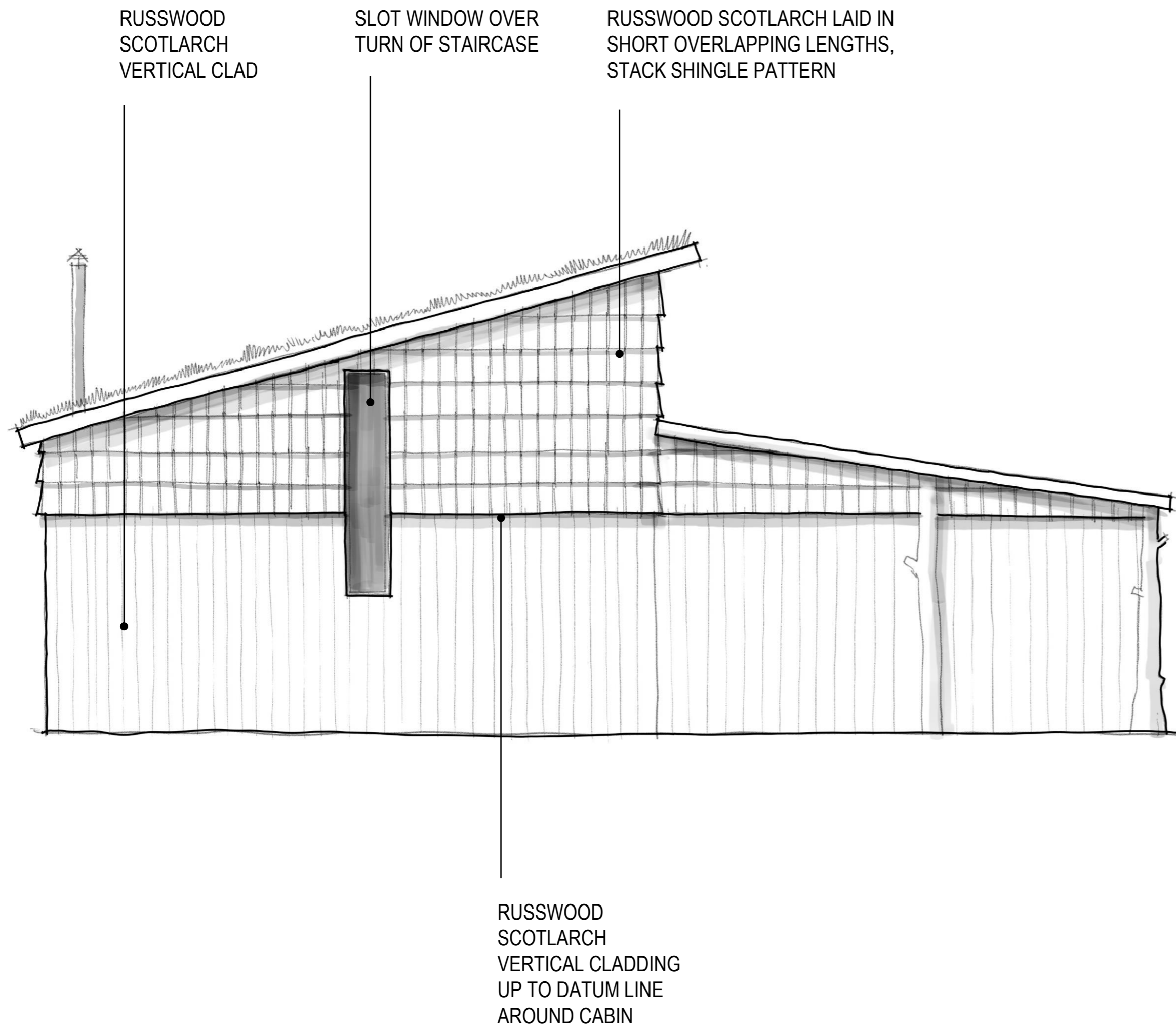
SIP PANEL CONSTRUCTION TO TAKE  
EXTERNAL AND INTERNAL CLADDING

FRONT ELEVATION

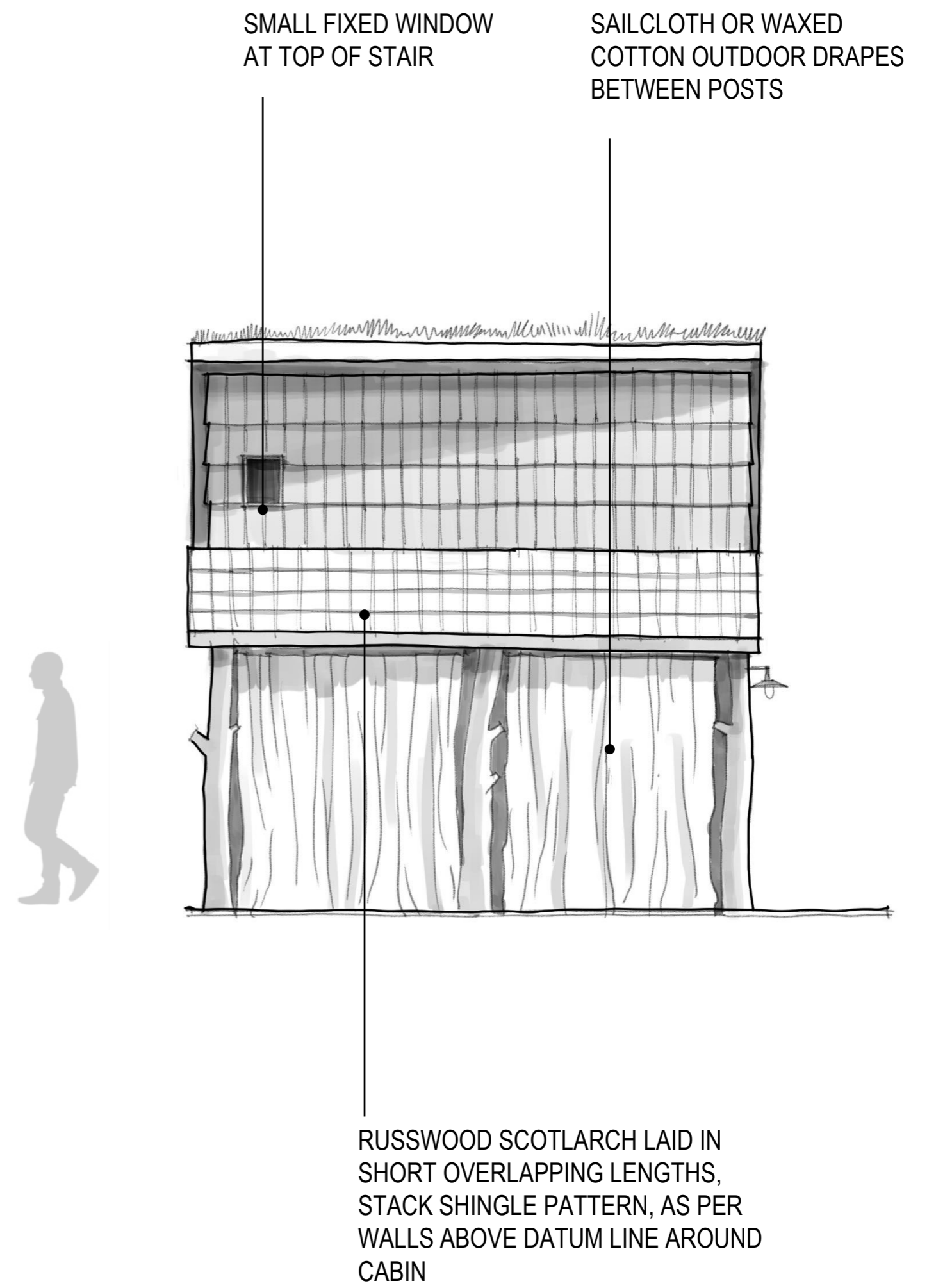
SIDE ELEVATION 1





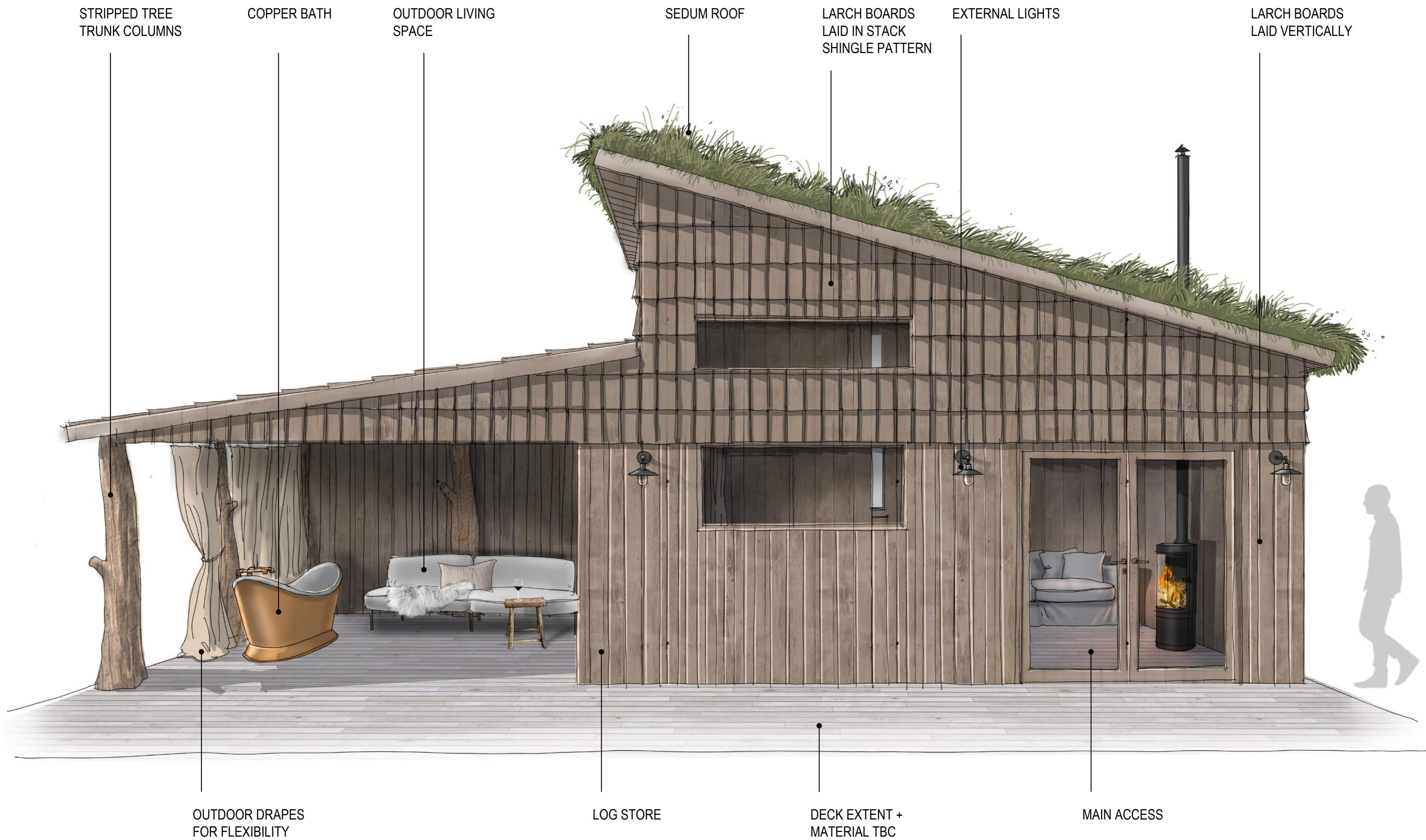


REAR ELEVATION



SIDE ELEVATION 2





VERY SUBTLE LIGHTING SO THAT ILLUMINATION BECOMES 'HIDDEN'

INTEGRATED SHUTTER FOR WINDOWS IN SAME MATERIAL AS CLADDING TO REINFORCE CONSIDERED DESIGN AND 'HIDDEN' SUBTLETY

POTENTIAL FOR A SHUTTER SYSTEM ON ALL WINDOWS, DRAWING ATTENTION TO THE SOFT FURNISHING OF THE BED AND SOFA AND THUS DEFINING ZONES AND DRAWING THE EYE

LIVE EDGE TIMBER WORKTOP SYMPATHETIC TO TONES OF RECLAIMED CLADDING

CLADDING SEAMLESSLY FLOWING WALLS ONTO CABINETRY TO CREATE A CALM, CONNECTED SPACE

TIMBER FLOOR

TIMBER CLAD CEILING PLANE ADDING TO SENSE OF DEPTH, WARMTH AND COCOONING IN THE SLEEPING AREA

STRIPPED TREE TRUNK COLUMNS AND RECLAIMED BEAMS WHERE STRUCTURAL APPROPRIATE

STRIPPED TREE BRANCHES FORMING BALUSTRADE FOR FIRST FLOOR

FRESH WHITE LINEN SHEETS ON LOW BED

WINDER STAIRCASE OVERCLAD IN TIMBER WRAPPING BEHIND BATHROOM UP TO SLEEPING AREA

SLIP COVER SOFA TO ADD FRESHNESS AND COSINESS TO PREDOMINANTLY TIMBER ENVIRONMENT. COULD ALSO BE CHANGED DEPENDENT ON SEASON





# ENCHANTED CREATIONS

01252 561060

[sales@enchantedcreations.co.uk](mailto:sales@enchantedcreations.co.uk)

[www.enchantedcreations.co.uk](http://www.enchantedcreations.co.uk)

Enchanted Creations is a Trading Name of Leisure Design Projects Ltd