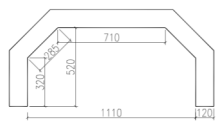
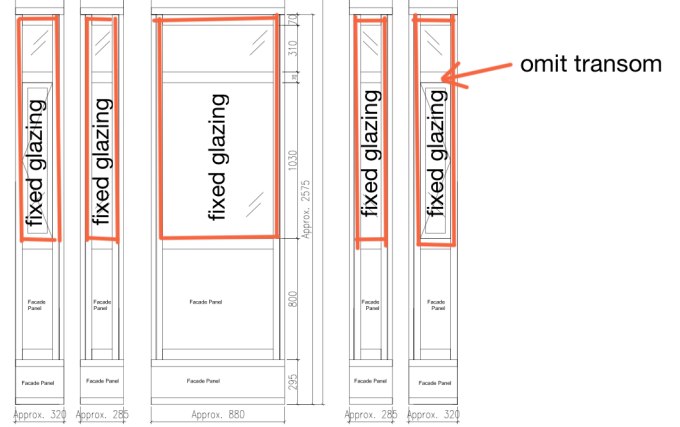




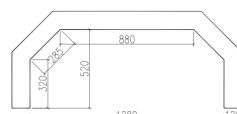
INTERNAL ELEVATION OF BAY WINDOW ON FRONT ELEVATION (W06)
3 storeys high



PLAN OF BAY WINDOW ON FRONT ELEVATION (W06)
3 storeys high
Total vertical height (including intermediate panels) = approx. 8180mm



INTERNAL ELEVATION OF BAY WINDOW ON SIDE AND REAR ELEVATIONS (W07 & W08)
4 storeys high



PLAN OF BAY WINDOWS ON SIDE AND REAR ELEVATIONS (W07 & W08)
4 storeys high
Total vertical height (including intermediate panels) = approx. 10755mm

