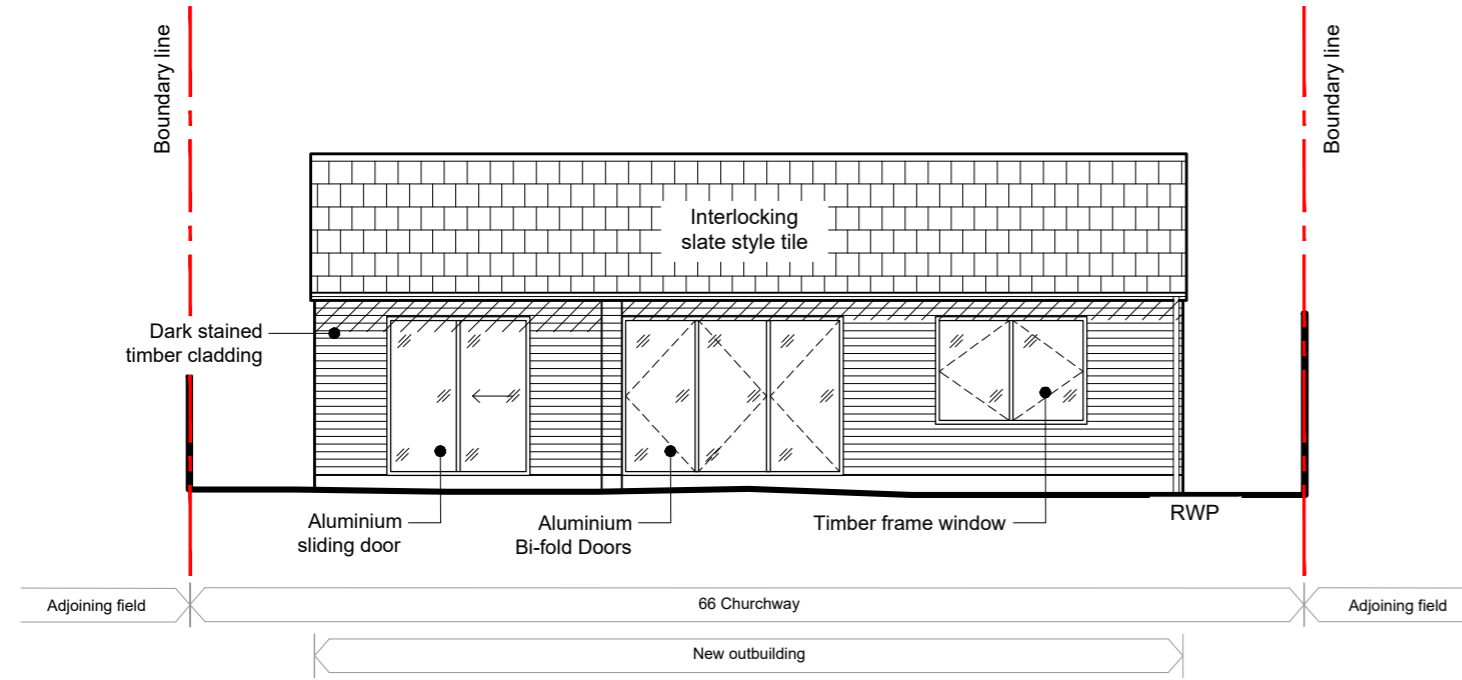
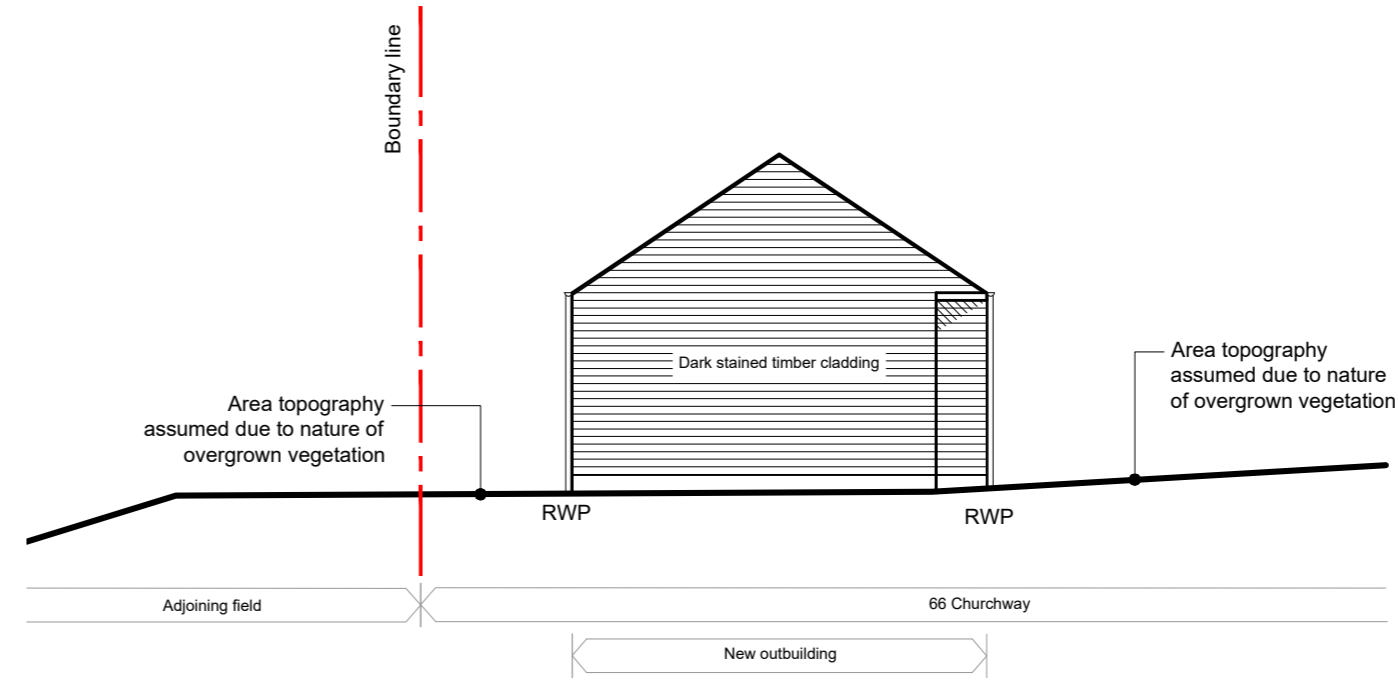


Notes

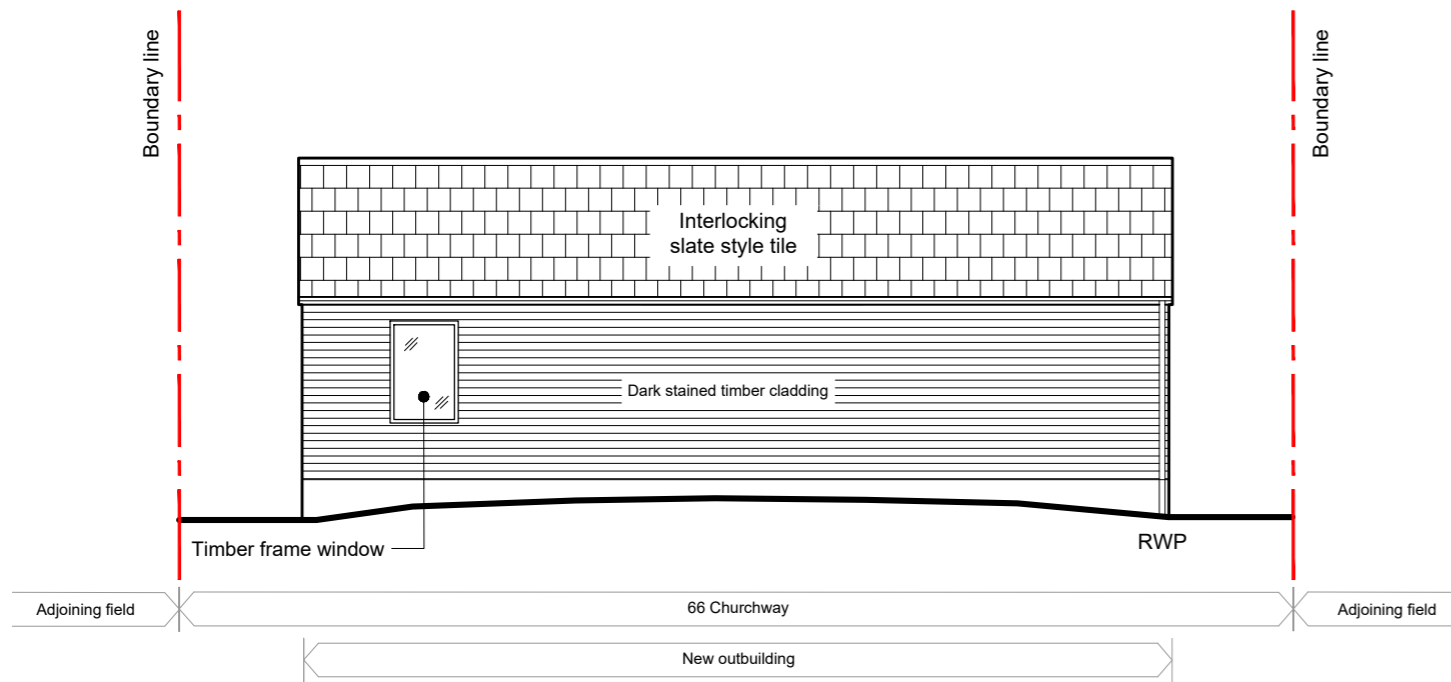
1. Copyright Jessop and Cook Architects Limited.
2. Do not scale from drawings, all dimensions to be checked on site.



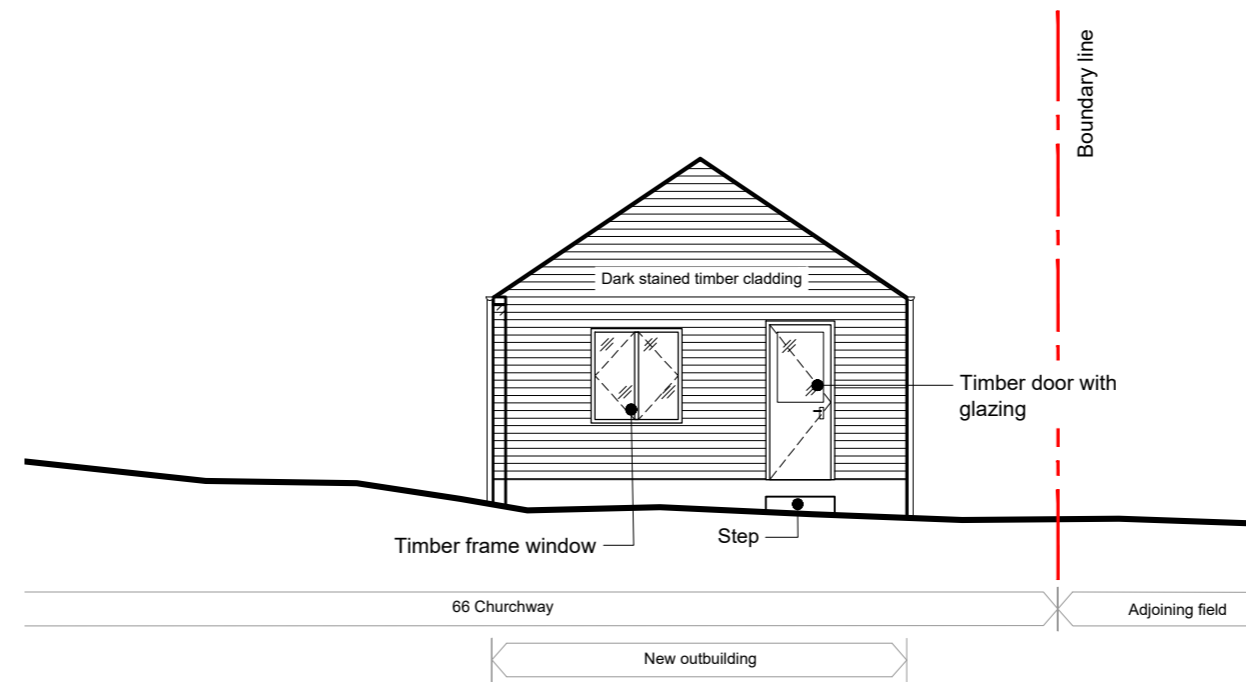
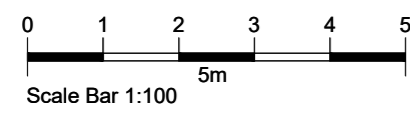
ELEVATION 1 - SOUTH/EAST



ELEVATION 2 - SOUTH/WEST



ELEVATION 3 - NORTH/WEST



ELEVATION 4 - NORTH/EAST

Revisions

PLANNING ISSUE

New Outbuilding
66 Churchway, Iffley Village
Oxford, OX4 4EF

for
Vyvyan Salmon

Drawing title

Proposed Elevations

JESSOP & COOK
ARCHITECTS

WEST WING, SECOND FLOOR
9 PARK END STREET
OXFORD OX1 1HH

T: 01865 591212
E: info@jessopandcook.co.uk
www.jessopandcook.co.uk

Scale at A2	Date	Drawn by	Checked
1:200	Sep 21	EOB	
Drawing number	Revision		
P.1559_076	-		