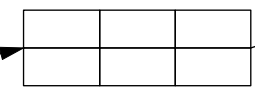


6 no polystorm cellular drainage crates by Polypipe (1000mm (l) x 500mm (w) x 400mm (d) laid in a single layer. Crates to be a minimum of 500mm below the surface. Crates to be fully wrapped in a geotextile membrane and surrounded on all sides by 100mm coarse sand.



Drainage at this point to either connect into an existing drain running across lower lawn (if this can be picked up) or to new cellular drainage system

**EMBLETON TOWER  
EMBLETON  
ALNWICK  
EXTERNAL DRAINAGE PROPOSALS**

**Scales**      Approx 1:100

**Date**    June 2018      BR

*Spence and Dower* LLP,  
**Chartered Architects**  
**25 Main Street**  
**Ponteland**  
**Newcastle upon Tyne NE20 9NH**  
**Tel: (01661) 820071**  
**Fax: (01661) 823788**  
**architects@spenceanddower.co.uk**

All dimensions should be checked on site.  
Do not scale from this drawing



© Spence and Dower LLP

M631 / 11

Rev.