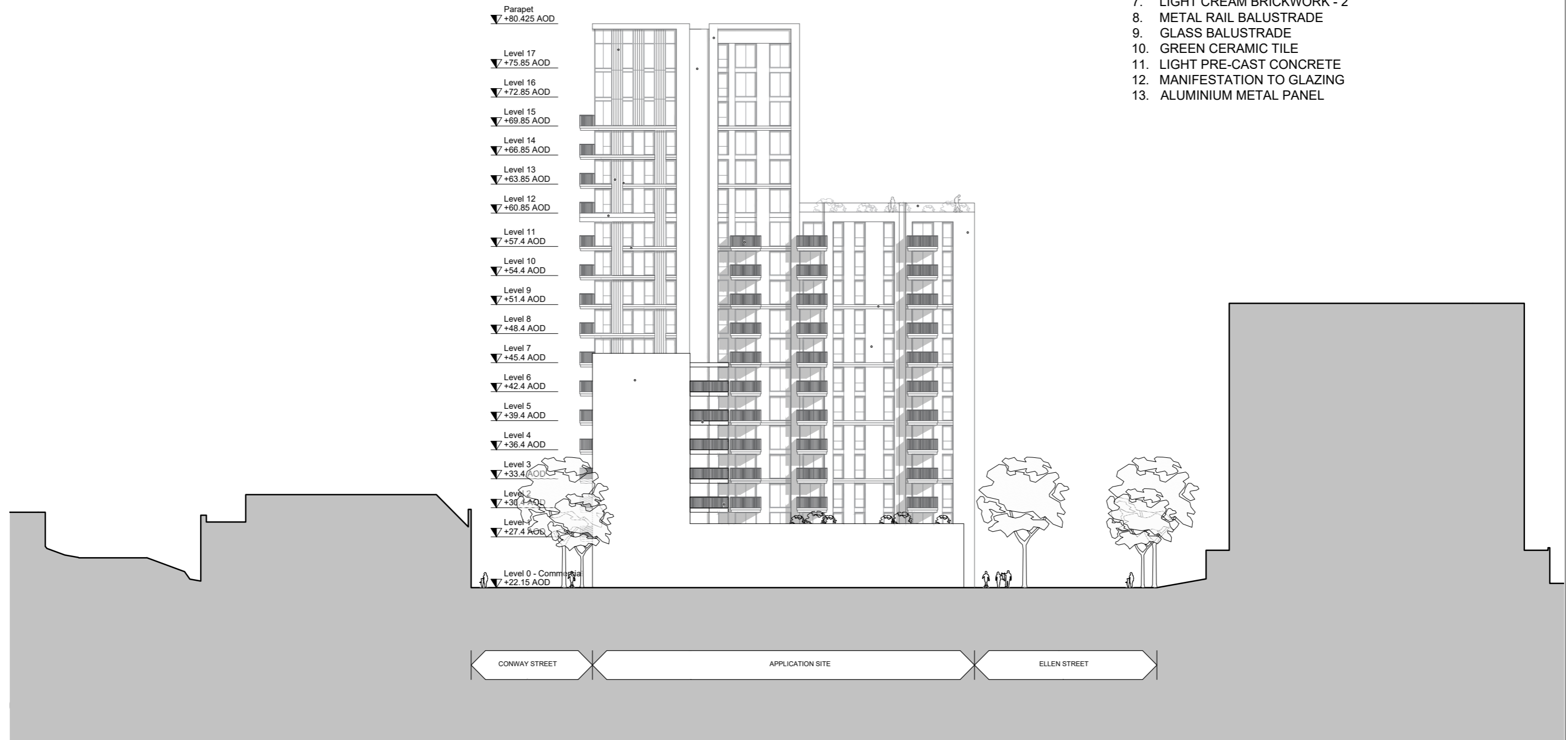


2.7 Bay Study - Residential Entrance - Block B - Proposed

MATERIALS LEGEND:

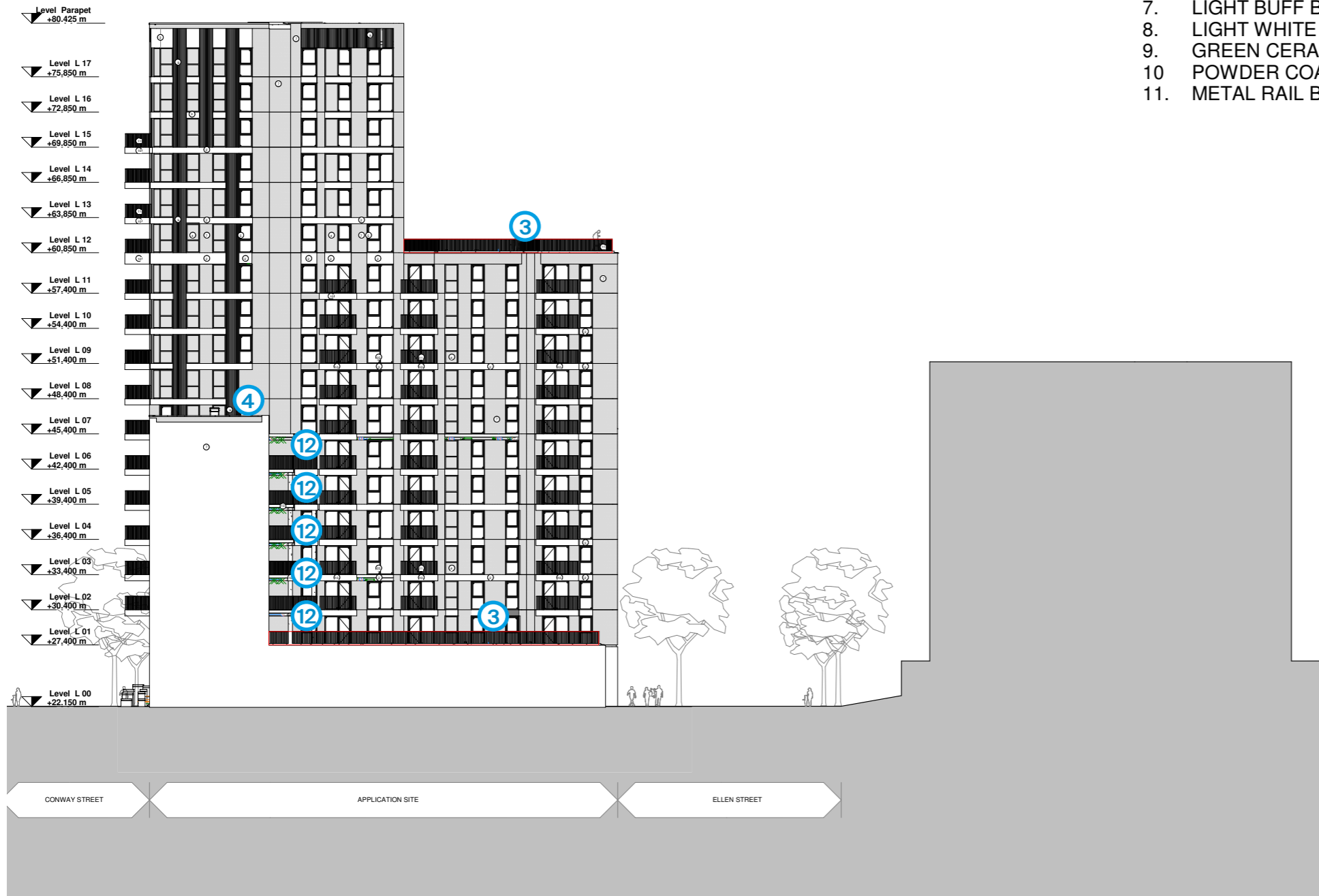
1. ZINC ROOF
2. METAL PANELS
3. BACK PAINTED GLASS
4. DARK GREY PPC ALUMINIUM WINDOW FRAME
5. VERTICAL SOLIDER COURSE BRICKWORK
6. LIGHT BUFF BRICKWORK - 1
7. LIGHT CREAM BRICKWORK - 2
8. METAL RAIL BALUSTRADE
9. GLASS BALUSTRADE
10. GREEN CERAMIC TILE
11. LIGHT PRE-CAST CONCRETE
12. MANIFESTATION TO GLAZING
13. ALUMINIUM METAL PANEL



2.8 Bay Study - Residential Entrance - Block B - Proposed

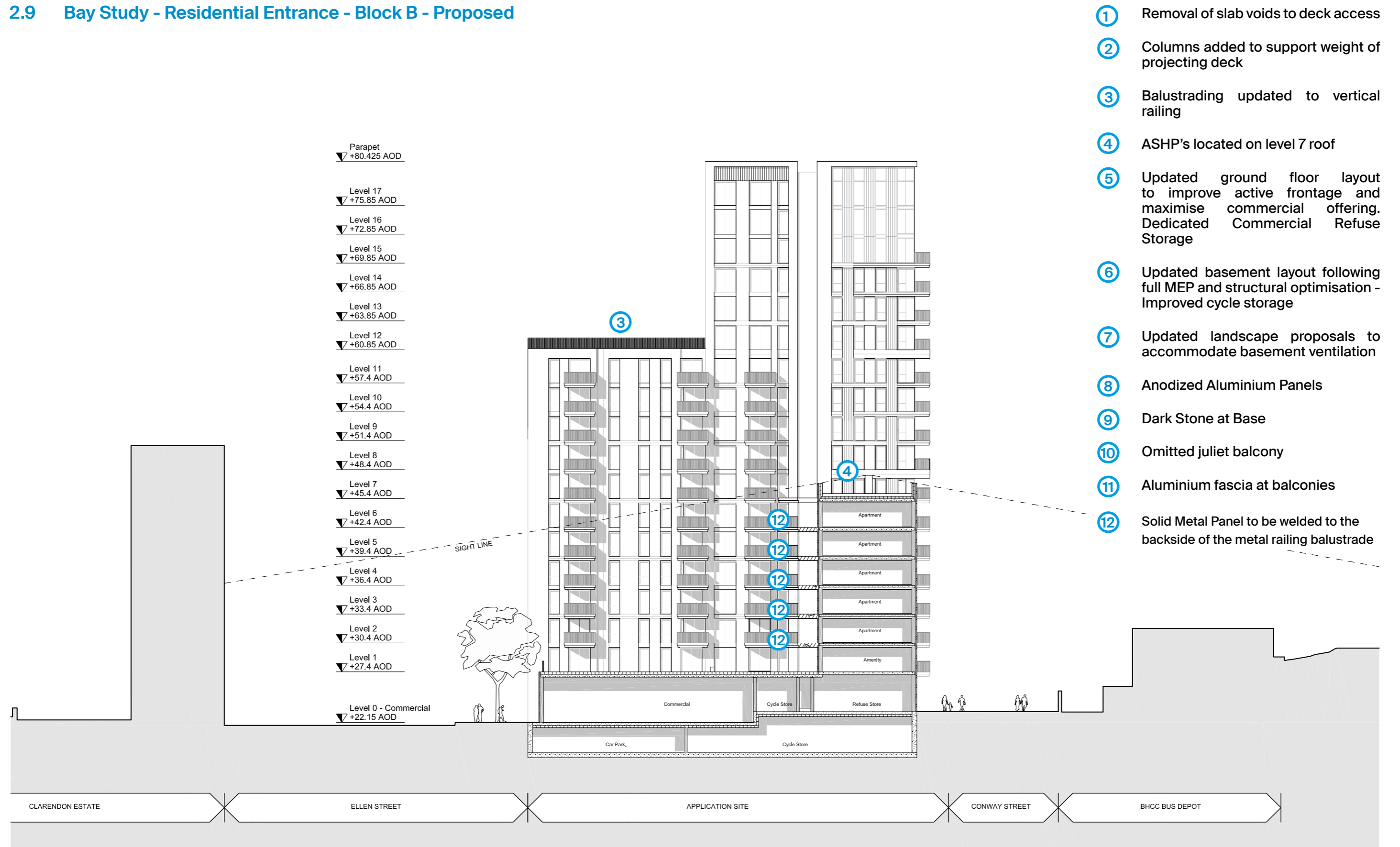
MATERIALS LEGEND

1. BASE STONE CLADDING
2. STONE CLADDING
3. ANODISED ALUMINIUM METAL PANEL - B715
4. BACK PAINTED GLASS
5. DARK GREY WINDOW FRAME / PARAPET / WINDOW REVEAL - RAL 7022
6. SOLDIER COURSE
7. LIGHT BUFF BRICKWORK
8. LIGHT WHITE BRICKWORK - VALENCIA MIX
9. GREEN CERAMIC TILES - LISTELOS + CONCA
10. POWDER COATED ALUMINIUM (HORIZONTAL BANDING AT BOLT ON BALCONIES)
11. METAL RAIL BALUSTRADE



- ① Removal of slab voids to deck access
- ② Columns added to support weight of projecting deck
- ③ Balustrading updated to vertical railing
- ④ ASHP's located on level 7 roof
- ⑤ Updated ground floor layout to improve active frontage and maximise commercial offering. Dedicated Commercial Refuse Storage
- ⑥ Updated basement layout following full MEP and structural optimisation - Improved cycle storage
- ⑦ Updated landscape proposals to accommodate basement ventilation
- ⑧ Anodized Aluminium Panels
- ⑨ Dark Stone at Base
- ⑩ Omitted juliet balcony
- ⑪ Aluminium fascia at balconies
- ⑫ Solid Metal Panel to be welded to the backside of the metal railing balustrade

2.9 Bay Study - Residential Entrance - Block B - Proposed



2.10 Bay Study - Inset Balcony 3B5P







For further information please contact

Tim Tolcher, Principal Director (London)
+(0)207 269 9400
+(0)7748 118 876
tim.tolcher@cjctstudios.com

Oliver Kampshoff, Director of Architecture (London)
+(0)207 269 9400
+(0)7793 675 189
oliver.kampshoff@cjctstudios.com

Antony Hall, Studio Director (Leeds)
+(0)113 224 5000
+(0)7966 936 945
antony.hall@cjctstudios.com

