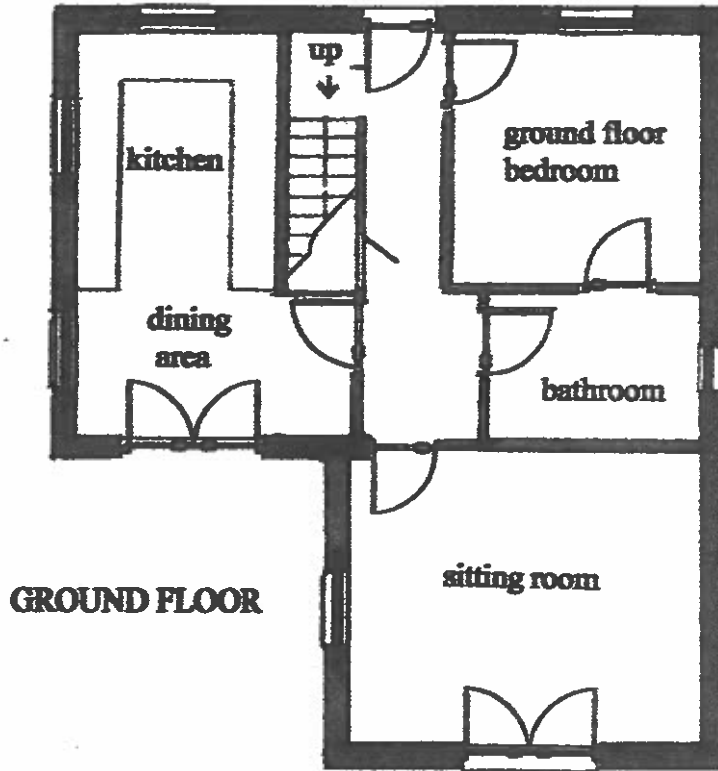


Application for a dormer bungalow

200921

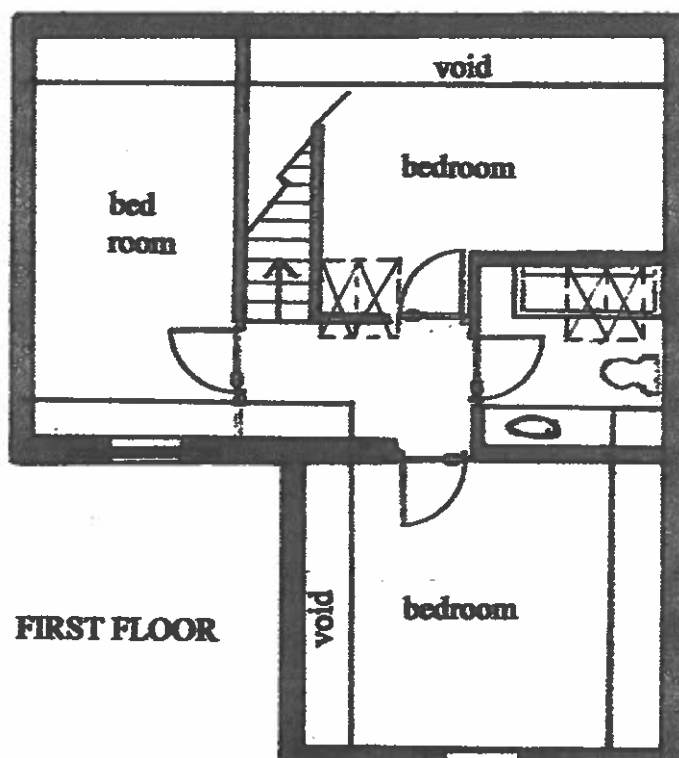
GROUND FLOOR PLAN (DB-GF-7)
showing suitability for elderly/disabled living
Scale 1:100 North ↑



ground floor area
60 square metres

Application for a dormer bungalow

FIRST FLOOR PLAN (DB-FF-8)
Scale 1:100 North ↑



usable first floor area
47 square metres