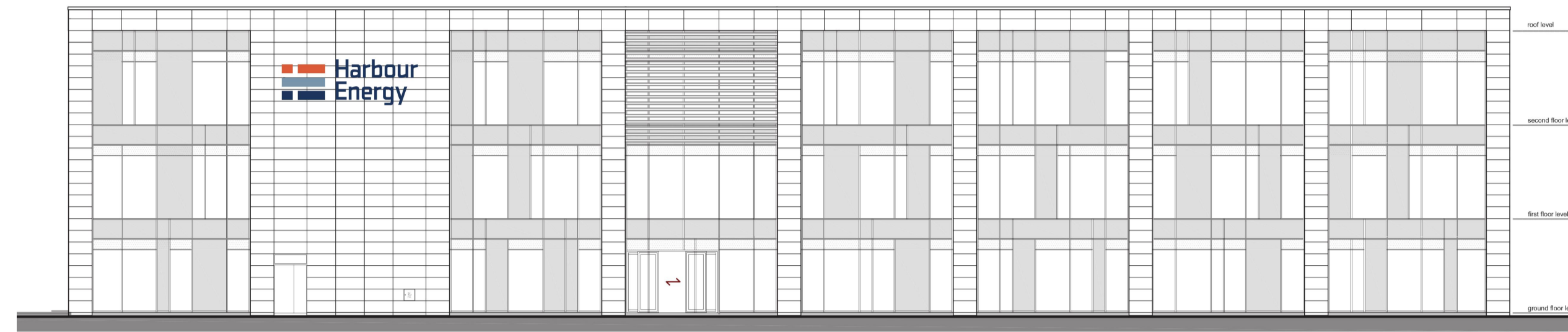


ELEVATION OF TYPICAL SIGNAGE 1:50

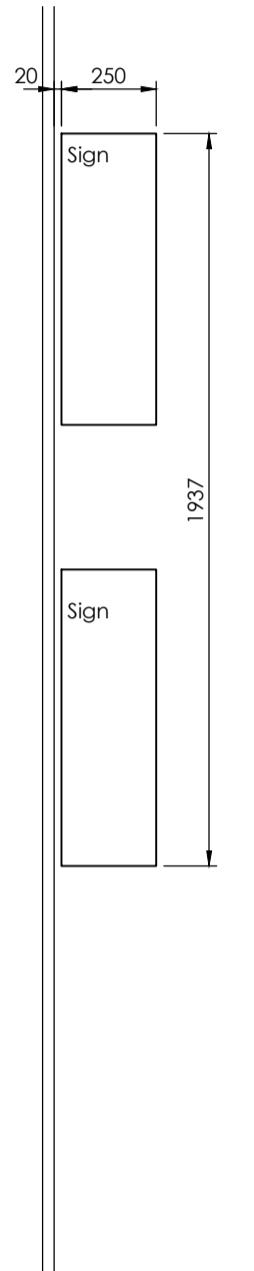


WEST ELEVATION 1:200

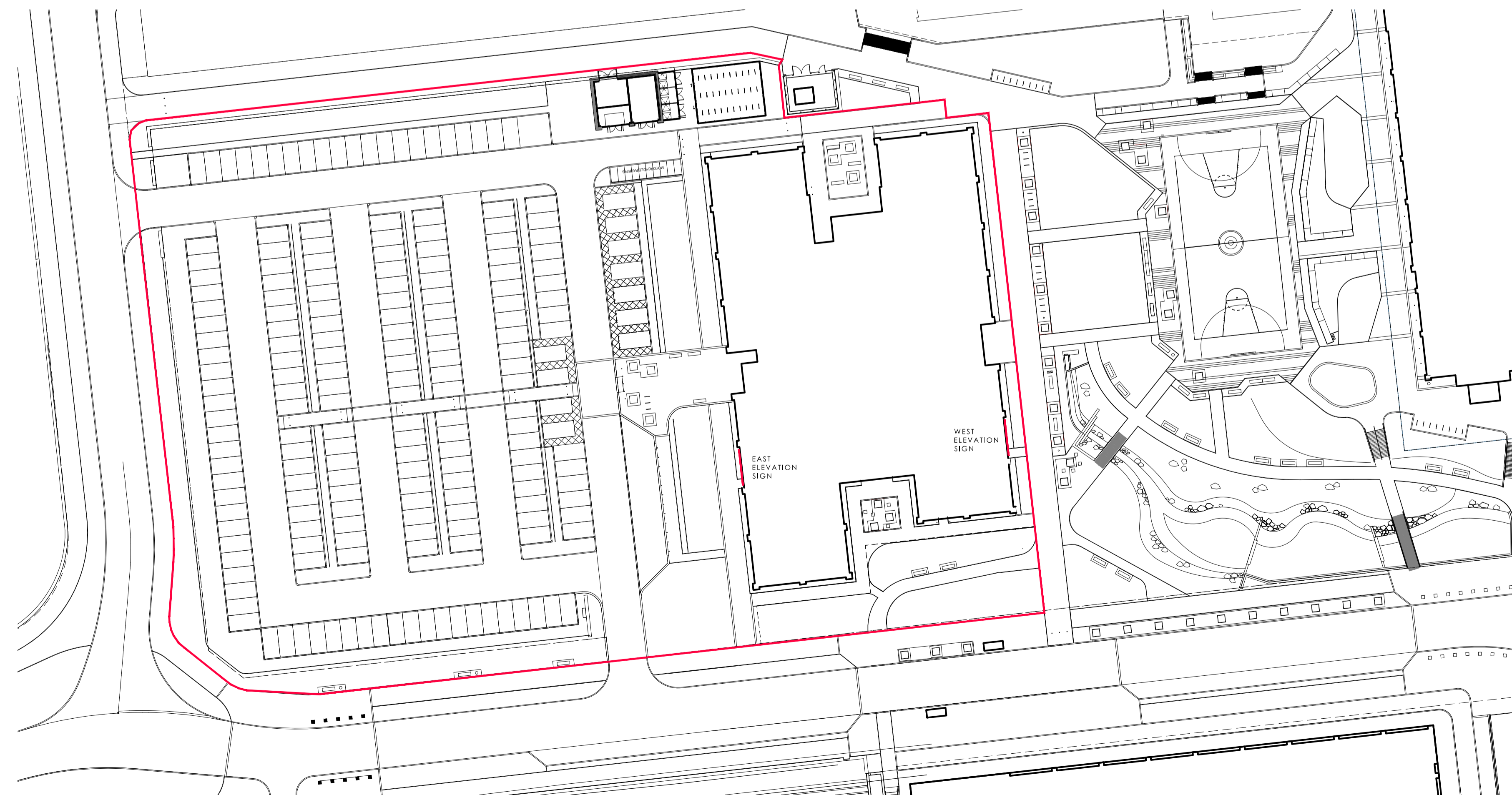


EAST ELEVATION 1:200

Signage Specification:
 Built up flat faced decaled stainless steel with 4mm opal
 030 polycarb backlits:
 . 2 x shapes @ 1152mm wide x 372mm high x 100mm deep
 . 1 x shape @ 1827mm wide x 372mm high x 100mm deep
 . 2 x shapes @ 456mm wide x 372mm high x 100mm deep
 To be powder coated:
 Pantone 654C (dark blue)
 Pantone 5425C (light blue)
 Pantone 172C (orange)
 Built up flat faced decaled stainless steel with 4mm opal
 030 polycarb backlits:
 "Harbour Energy" @ 770mm Cap H
 Powder coated in Pantone 654C
 With white 6500k Sloan LED's installed for halo illumination.



SECTION THRU' SIGN 1:20



SITE PLAN 1:500



EXISTING VIEW LOOKING WEST



EXISTING VIEW LOOKING EAST

DAVIDSON SMITH ARCHITECTS

12b Carden Place, Aberdeen, AB10 1UR
 01224 679551
 chris@davidsmith.co.uk

Project
 Proposed External Signage
 Plot 6, Prime Four,
 Kingswells, Aberdeen
 For Harbour Energy

Drawing

External Signage
 Planning Application Drawing

Scale AS SHOWN Date Sep 2021

Drawing 039 . PD . 002 Rev A

Davidson Smith Architects is the trading name of Davidson Smith Architects Limited, a Limited Company registered in Scotland (number 659071) having its registered office at the address above.