

# DESIGN ANALYSIS

The following pages describe the alterations to the scheme that are proposed and compares the impact of these alterations to the extant permission for the site.

# DESIGN ANALYSIS

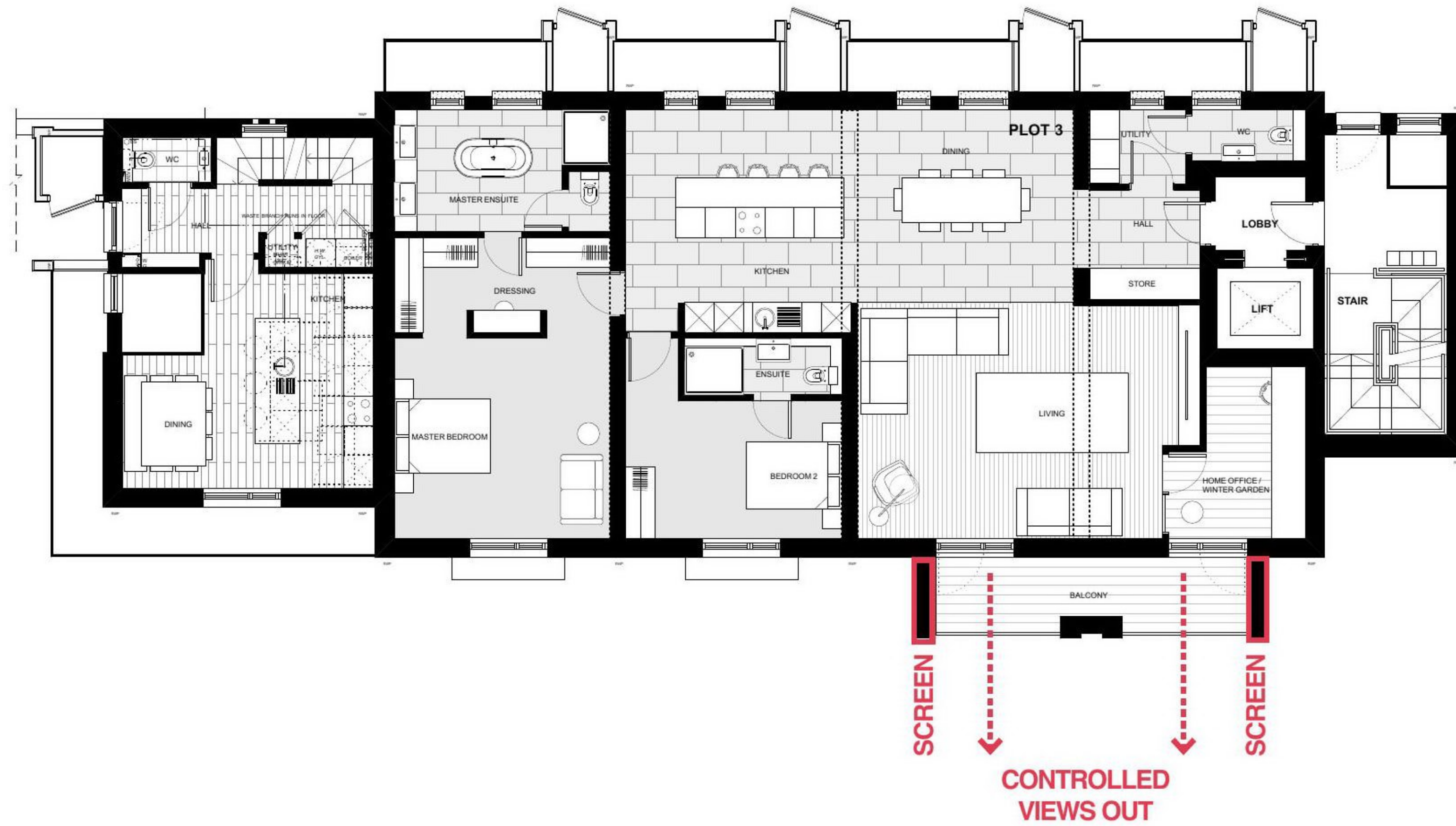
The proposed balconies to the South elevation continue the language of stone projections to this elevation as established with the extent permission. The vertical emphasis and legibility of the fenestration and projections is maintained with the scheme continuing to read as a series of individual terraced townhouses.





# DESIGN ANALYSIS

Overlooking to adjacent properties is prevented by the inset nature of the balconies whose side wings screen views to the East and West.



# DESIGN ANALYSIS

The timber projections to the North elevation are maintained and modified to retain visual interest and elevational relief. The associated timber detailing and fenestration sizes are all as per the extant permission.





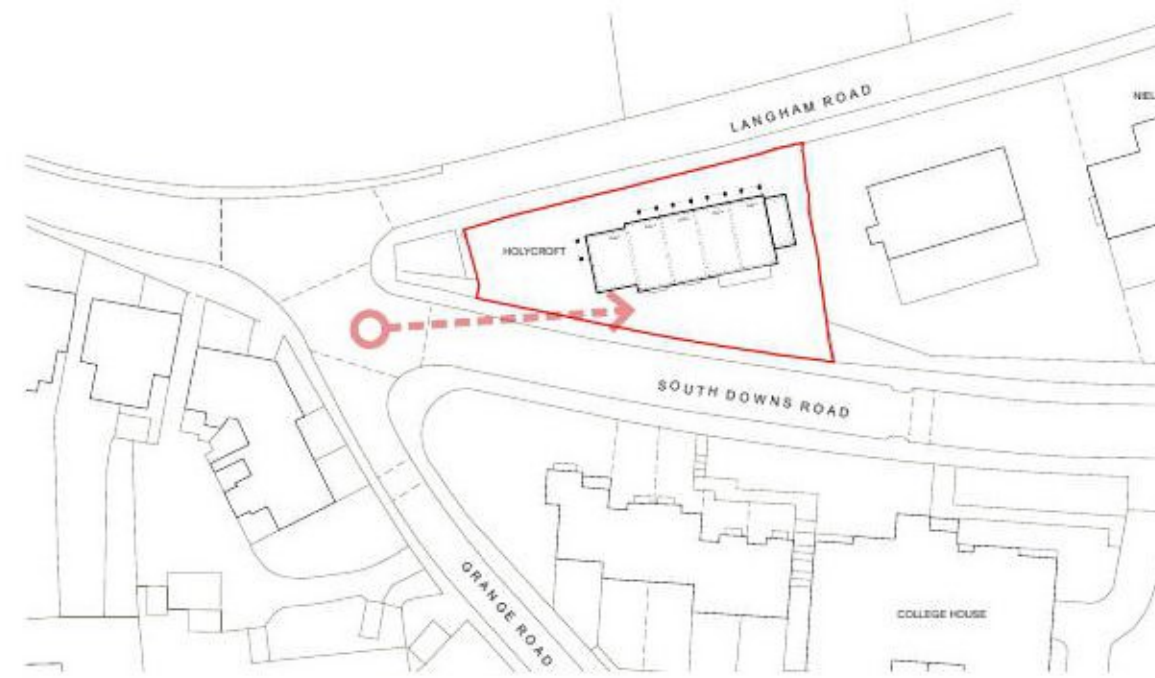
# DESIGN ANALYSIS

The extended stair core maintains its relationship to the Eastern boundary, whilst the ridge height and elevation planes are set back and down from the main building, thus ensuring that the stair core remains subservient.





# DESIGN ANALYSIS



The following pages compare the extant and the proposed scheme from a number of viewpoints along Langham and South Downs Road in order to visually compare the impact of the proposed scheme on its setting. The analysis demonstrates that the impact of the proposed alterations to the scheme are only perceived from a small number of vantage points close to the site itself.



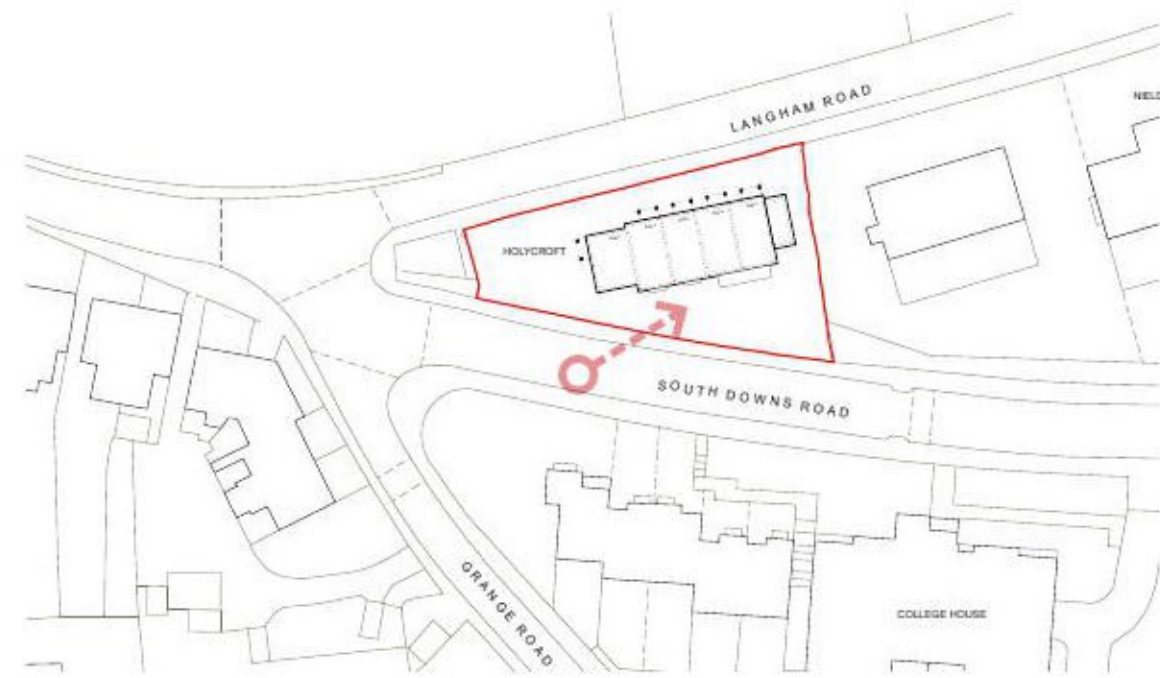
Extant view from South Downs Road looking East



Proposed view from South Downs Road looking East



# DESIGN ANALYSIS



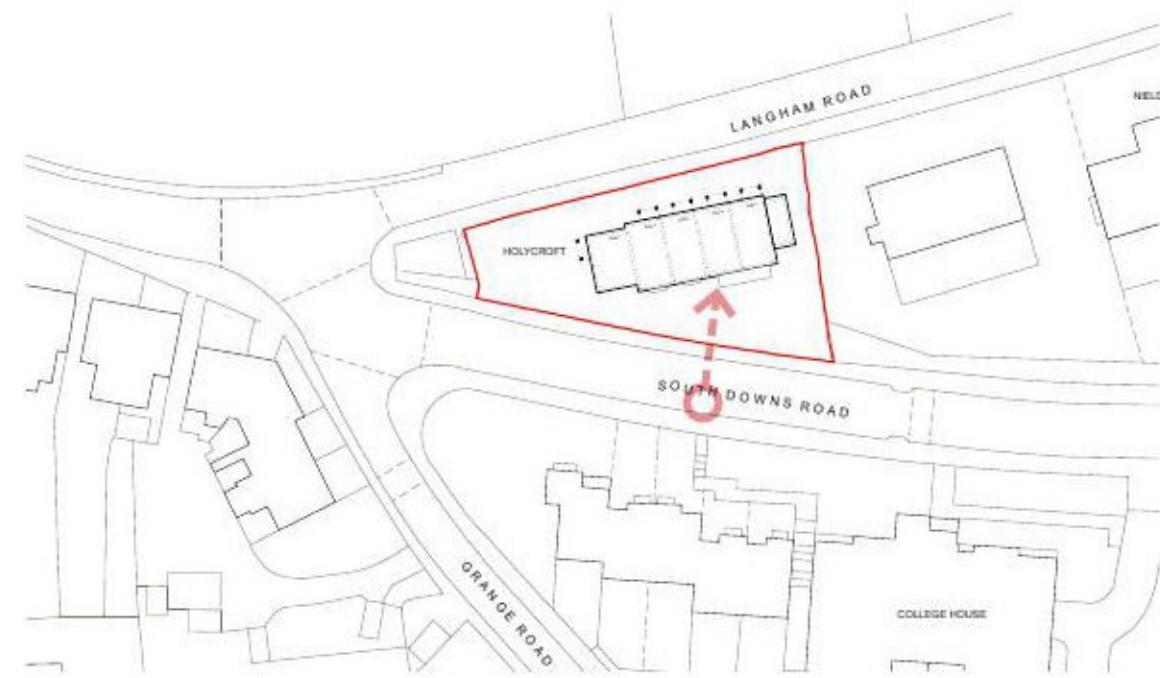
Extant view from South Downs Road looking North East



Proposed view from South Downs Road looking North East



# DESIGN ANALYSIS



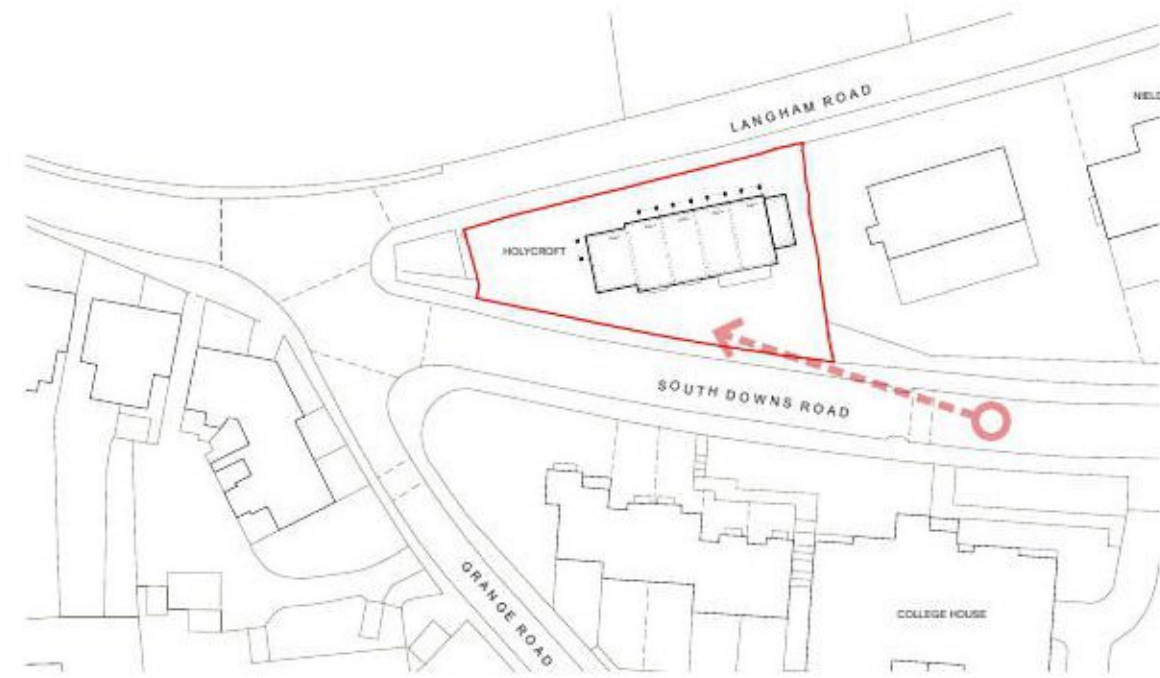
Extant view from South Downs Road looking North



Proposed view from South Downs Road looking North



# DESIGN ANALYSIS



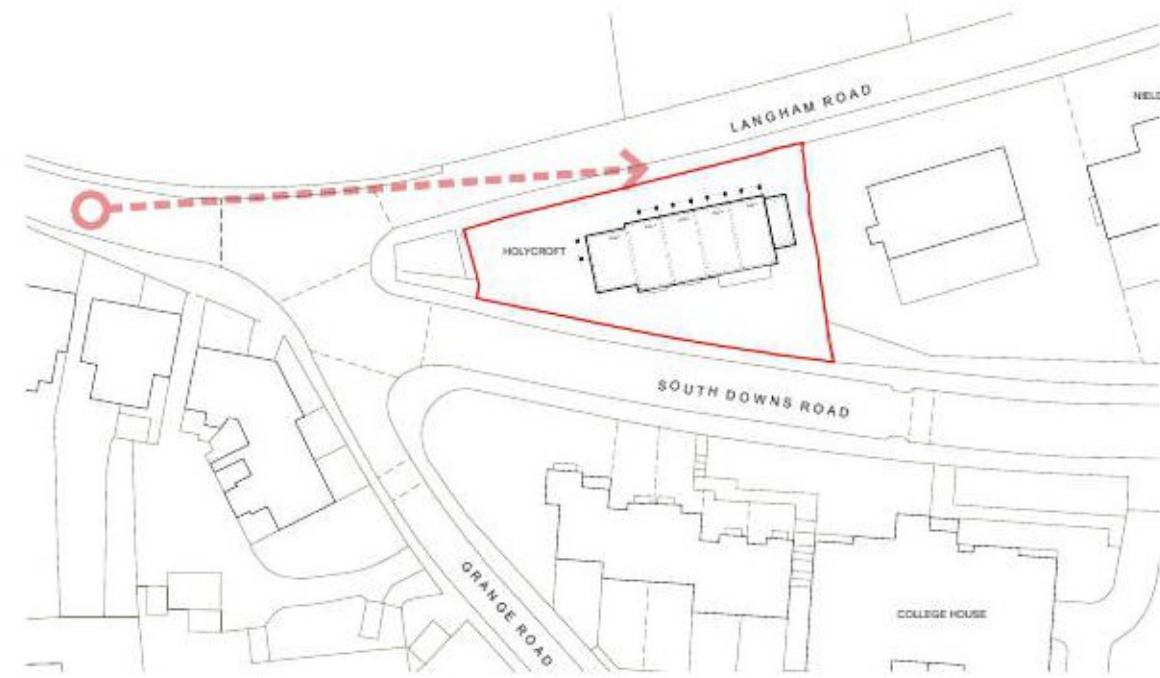
Extant view from South Downs Road looking West



Proposed view from South Downs Road looking West



# DESIGN ANALYSIS



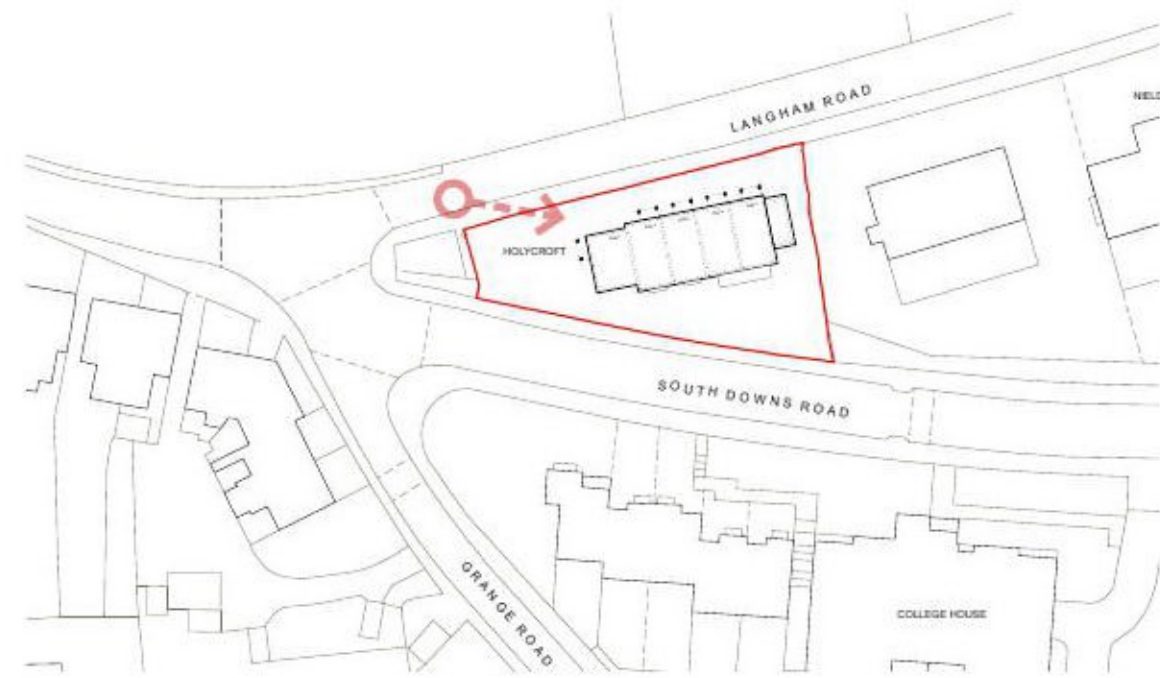
Extant view from Langham Road looking East



Proposed view from Langham Road looking East



# DESIGN ANALYSIS



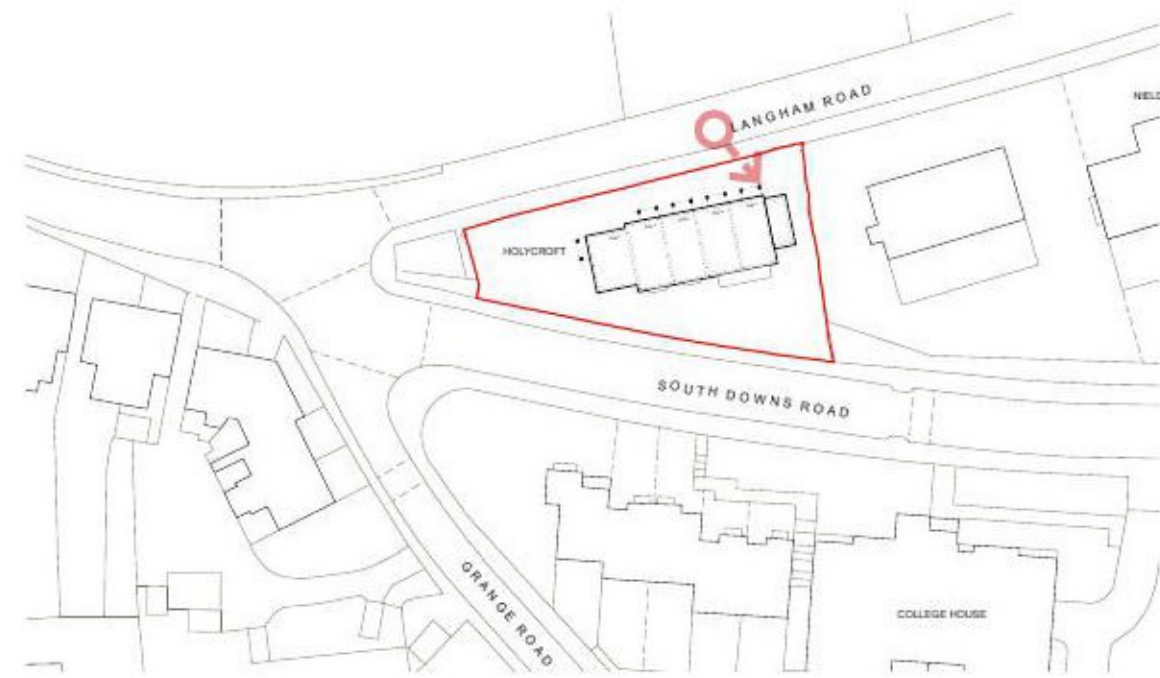
Extant view from Langham Road looking South East



Proposed view from Langham Road looking South East



# DESIGN ANALYSIS



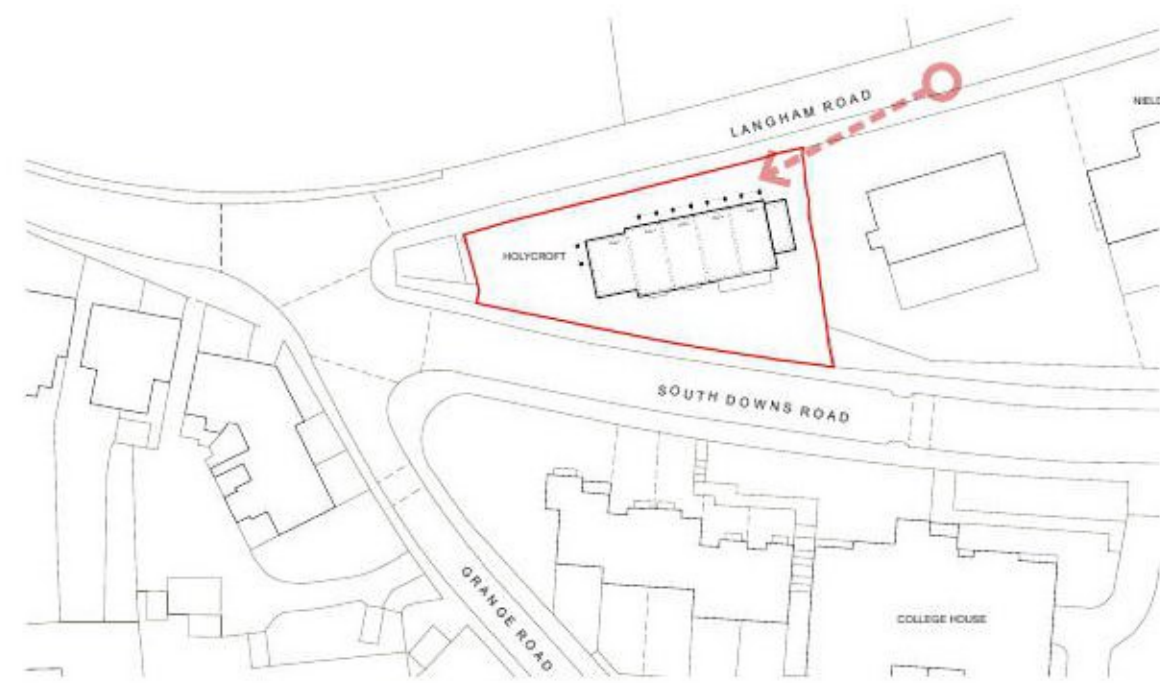
Extant view from Langham Road looking South



Proposed view from Langham Road looking South



# DESIGN ANALYSIS



Extant view from Langham Road looking West



Proposed view from Langham Road looking West