

astley.

Delivering creative brand environments
through signage, print and digital solutions



Auchtermuchty



Address: 10 Low Road,
Auchtermuchty KY14 7AU

Drg: G_78880

Title: Ext Signage

Visual Status: FIM APPROVED

Drg by: PT Date: 22.09.21

Date	Rev	Amendments
31.08.21	-	FIM APPROVED
22.09.21	A	Item 1B Amended. Block Plan added.

Scale 1:50@A3



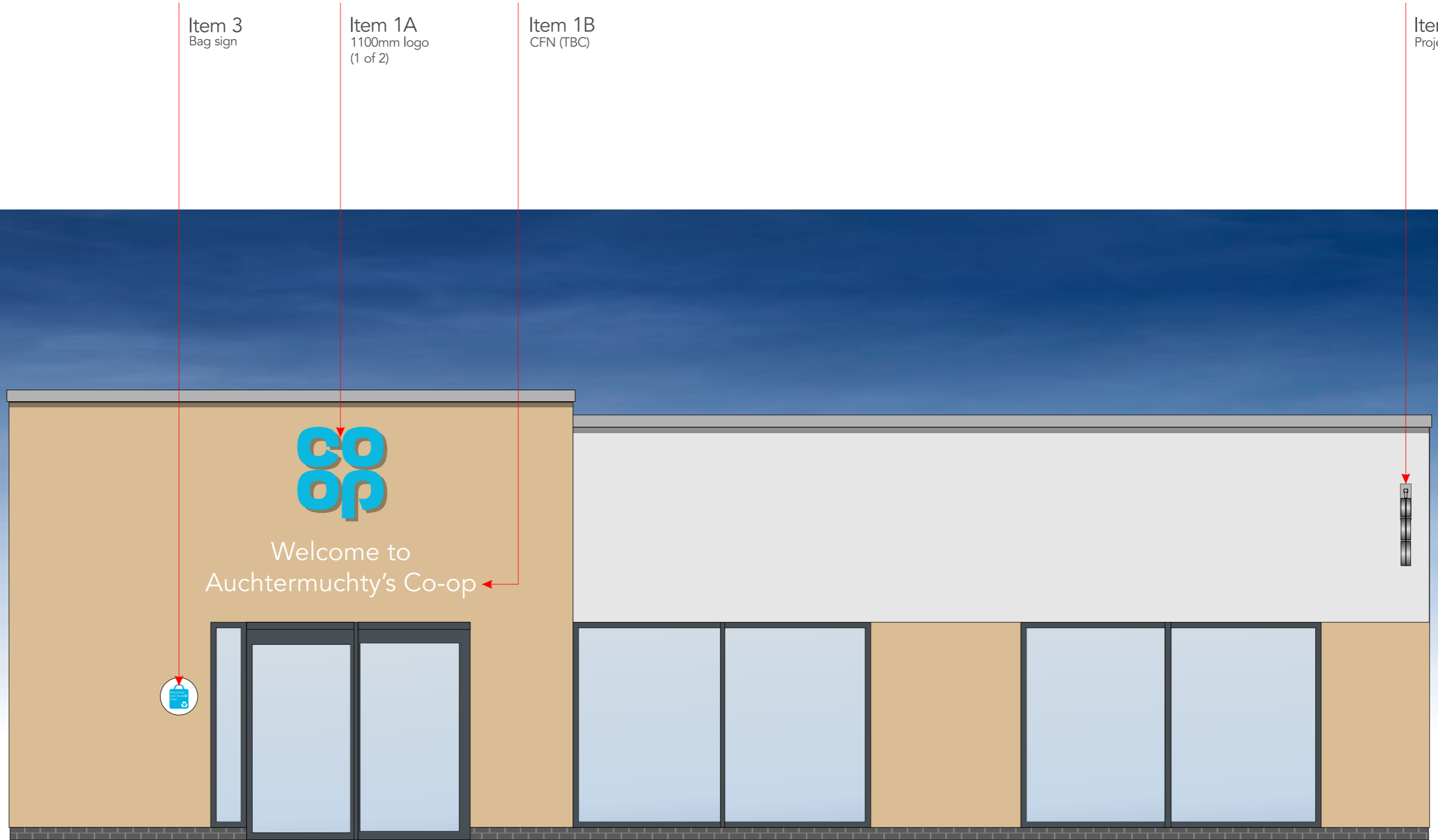
Proposed Front Elevation

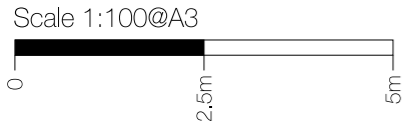
Item 3
Bag sign

Item 1A
1100mm logo
(1 of 2)

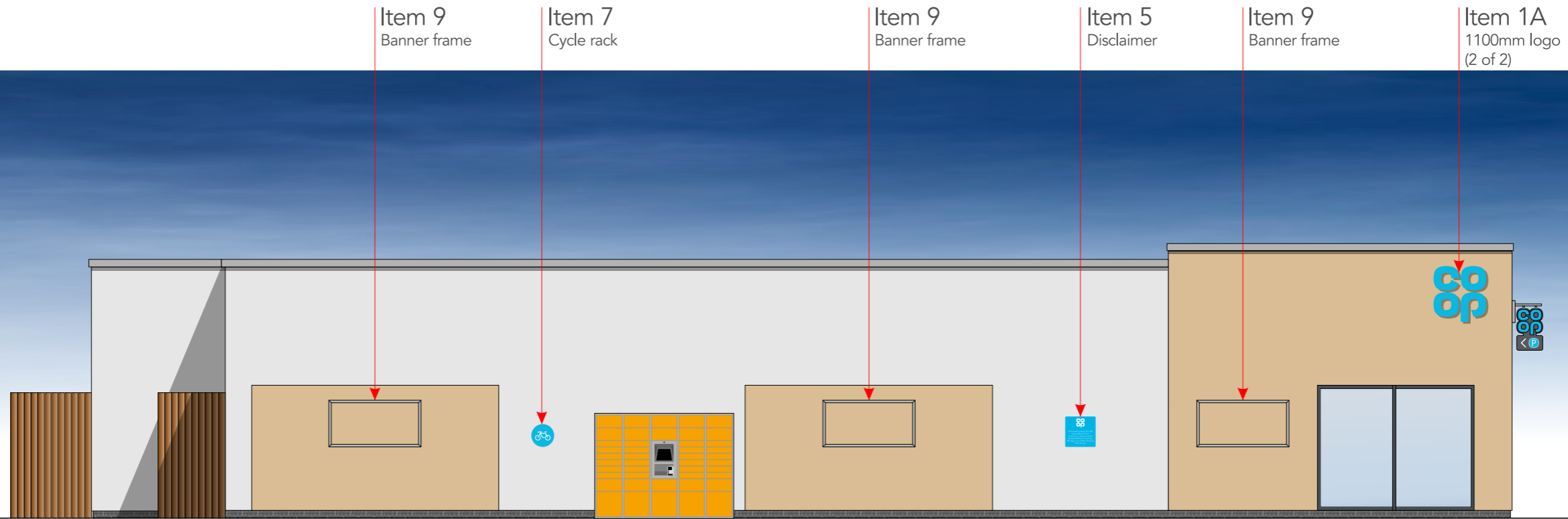
Item 1B
CFN (TBC)

Item 2
Projecting sign





Proposed Side Elevation

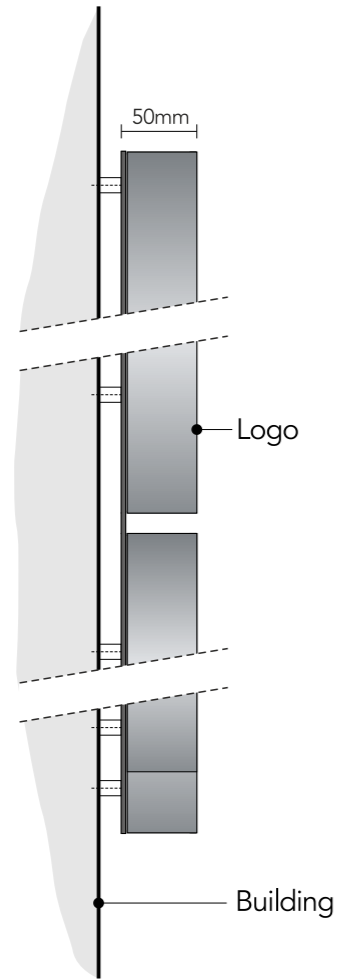
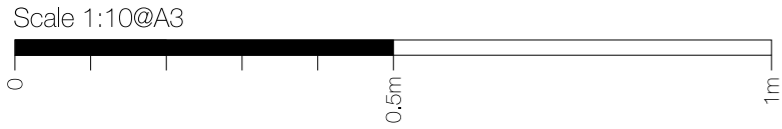


Scale 1:100@A3
0 2.5m 5m

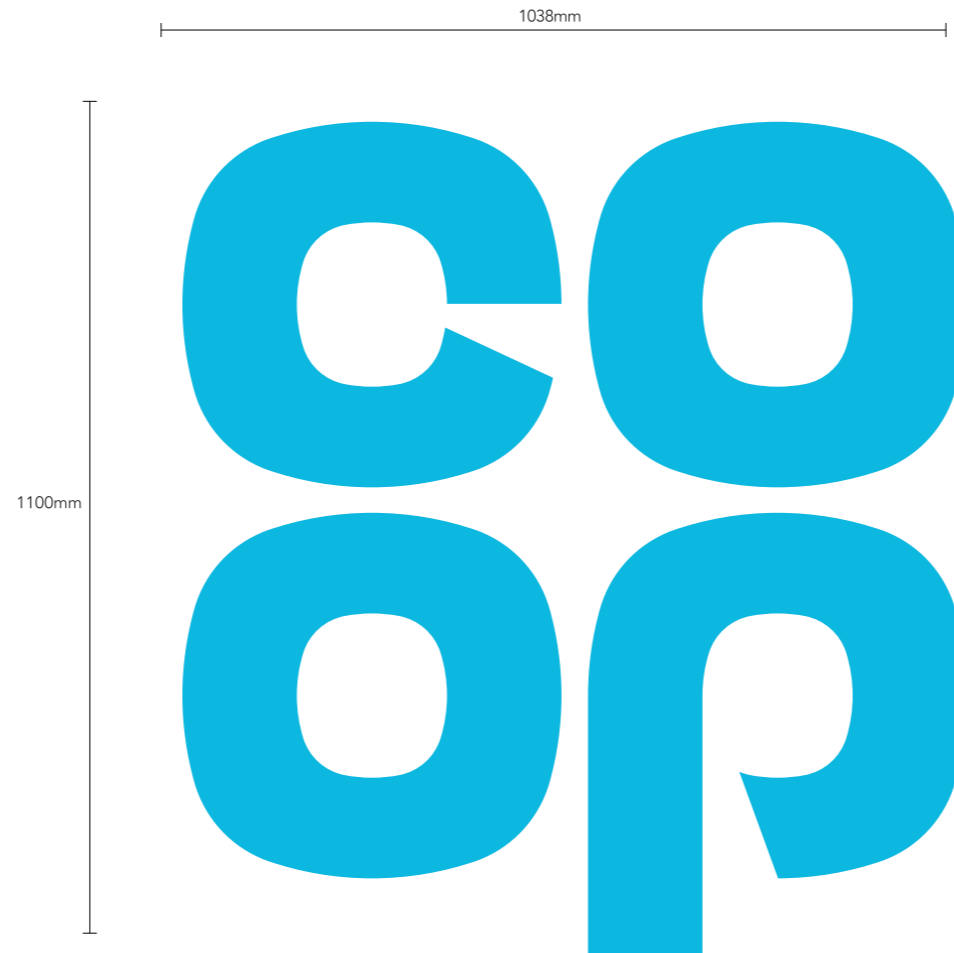
Proposed Rear Elevation



Item 8
Deliveries



Logo Sections - scale 1:5 @ A3



Face view of Logo - scale 1:10 @ A3

Item 1A - scale 1:10 @ A3

2no Single sided built up logo.

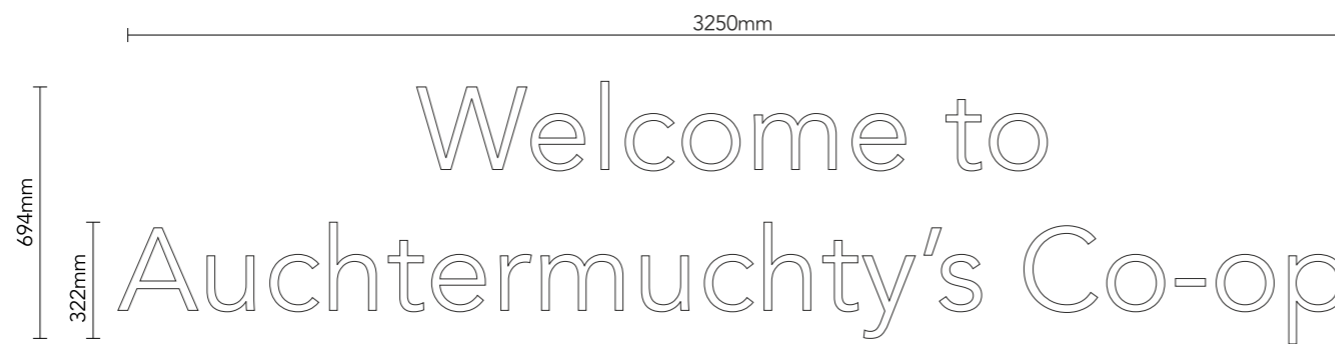
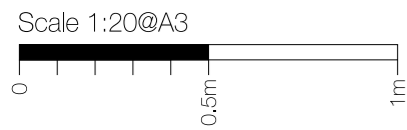
Steel mounted plate with individual built-up face illuminated letters. Mounting plate to be 3mm mild steel fixed to building substrate with brass locator fixings.

3D built up letters to have aluminium sides, 75mm deep with 5mm Co-op blue acrylic faces. All visible edges, aluminium returns & mounting plate to be finished silver Ral 9006 60% gloss.

Letters internally illuminated by white LEDs, giving face illumination.

Note: Electrical feed to be supplied to sign position by main contractor prior to installation.

Height from FFL to underside of sign being: 3870mm



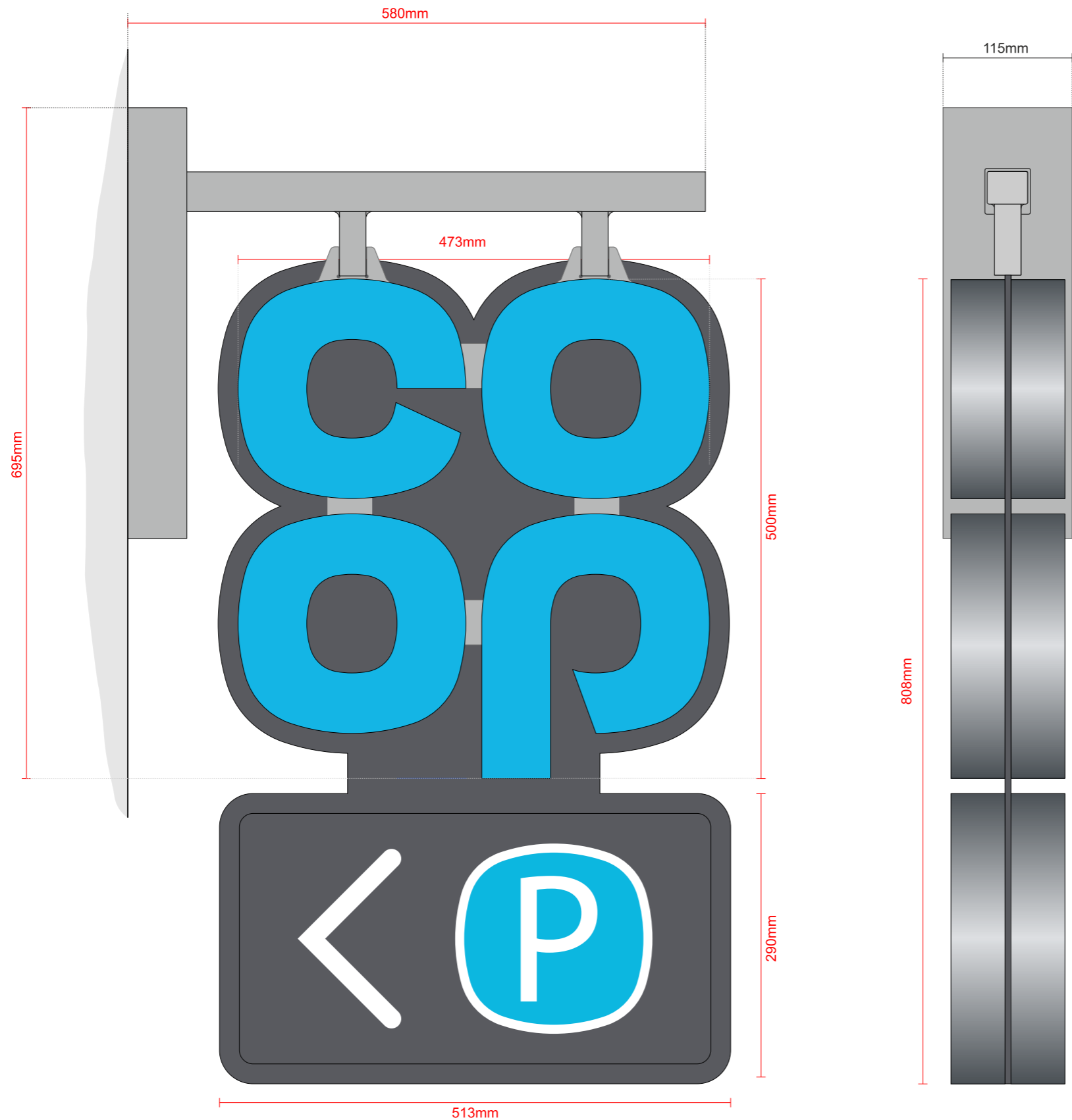
Item 1B - scale 1:20 @ A3

322mm text to match 1100mm Logo, from 5mm thick white Perspex 069 acrylic. Letters fitted to fascia with locator snap fixings. Non illuminated.

Height from FFL to underside of sign being: 2900mm

Store fascia name to be confirmed

All illuminated signs to have 5 amp switched fused spur behind sign location



Projecting sign

1No. Projection sign size 1 (500) internally illuminated built up letters on both sides. Individual 3D letters constructed from silver aluminium side returns and Co-op BLUE acrylic faces - faces only to illuminate.

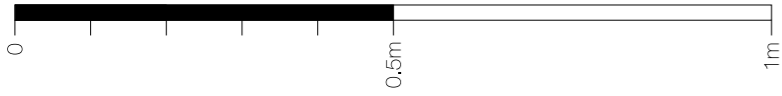
Fully welded 5mm Mild Steel wall mounting plate and support frame. Profile cut logo mounting plate from 5mm Mild Steel, welded to the hanging tubes. All visible steelwork to be finished silver to match RAL 9006 60% gloss. (CFP-P-FF0650/B)

Height from FFL to underside of sign being: 3300mm

All illuminated signs to have 5 amp switched fused spur behind sign location

Face view - scale 1:5 @ A3

Side view - scale 1:5 @ A3



Item 3 - scale 1:10@ A3

1No. 450mm Dia. new car park sign.

Flat dibond panel with applied vinyl display, anti graffiti lacquered, rounded corners. Fixed to wall with suitable fixings.

Non illuminated.

Height from FFL to underside of sign being: 1400mm



Item 4 - scale 1:10@ A3

2No. 450mm Dia single sided car park sign

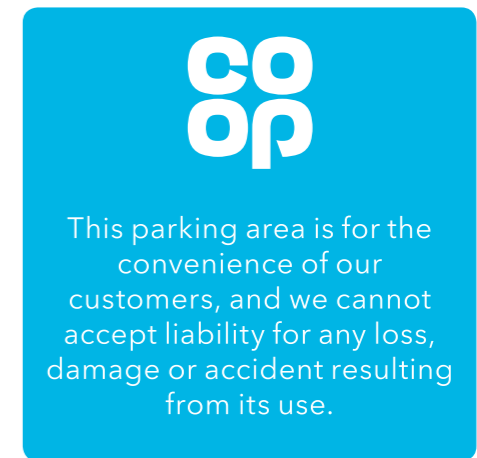
Flat dibond panel with applied vinyl display, anti graffiti lacquered.

Panel Fitted to a new 76mm dia. steel post with signfix channel.

Post powder coated Ral 7043 traffic grey and fitted to ground by suitable means.

Non illuminated.

Height from FFL to underside of sign being: 2100mm



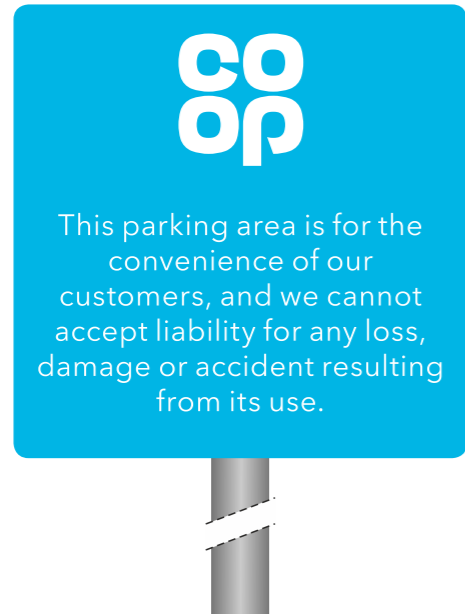
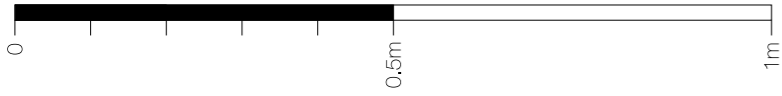
Item 5 - scale 1:10@ A3

1No. new car park post sign.

1No. 600x600mm Flat aluminium panel with applied vinyl display, anti graffiti lacquered, rounded corners. Fixed to wall with suitable fixings

Non illuminated.

Height from FFL to underside of panel being: 1400mm



Item 6 - scale 1:10@ A3

1No. 600x600mm new car park sign.

Flat dibond panel with applied vinyl display, anti graffiti lacquered, rounded corners. Panel Fitted to a new 76mm dia. steel post with signfix channel.

Post powder coated Ral 7043 traffic grey and fitted to ground by suitable means.

Non illuminated. .

Height from FFL to underside of sign being: 2100mm



Item 7 - scale 1:10@ A3

1No. 450mm Dia. new sign.

Flat dibond panel with applied vinyl display, anti graffiti lacquered. Fixed to wall with suitable fixings.

Non illuminated.

Height from FFL to underside of sign being: 1400mm

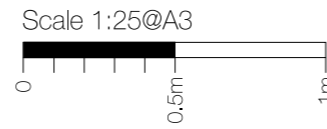
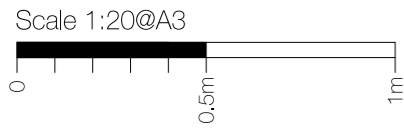


Item 8 - scale 1:10@ A3

1No. 600x600mm Flat aluminium panel with applied vinyl display, anti graffiti lacquered, rounded corners. Fixed to wall with suitable fixings

Non illuminated.

Height from FFL to underside of panel being: 1400mm



Items 9 & 10

Specification



Front View



Section View

Item 9 - scale 1:20 @ A3

3No. 1820x920x50mm Banner frames.

Aluminium angle, mill finished & welded together with eyelet holes for banner fixing.

Height from FFL to underside of sign being: 1400mm



Face view - scale 1:25 @ A3

Side view

Rear view - scale 1:25 @ A3

Item 10 - scale 1:25 @ A3

1No. totem with dark grey header panels and BLUE faced built up logo.

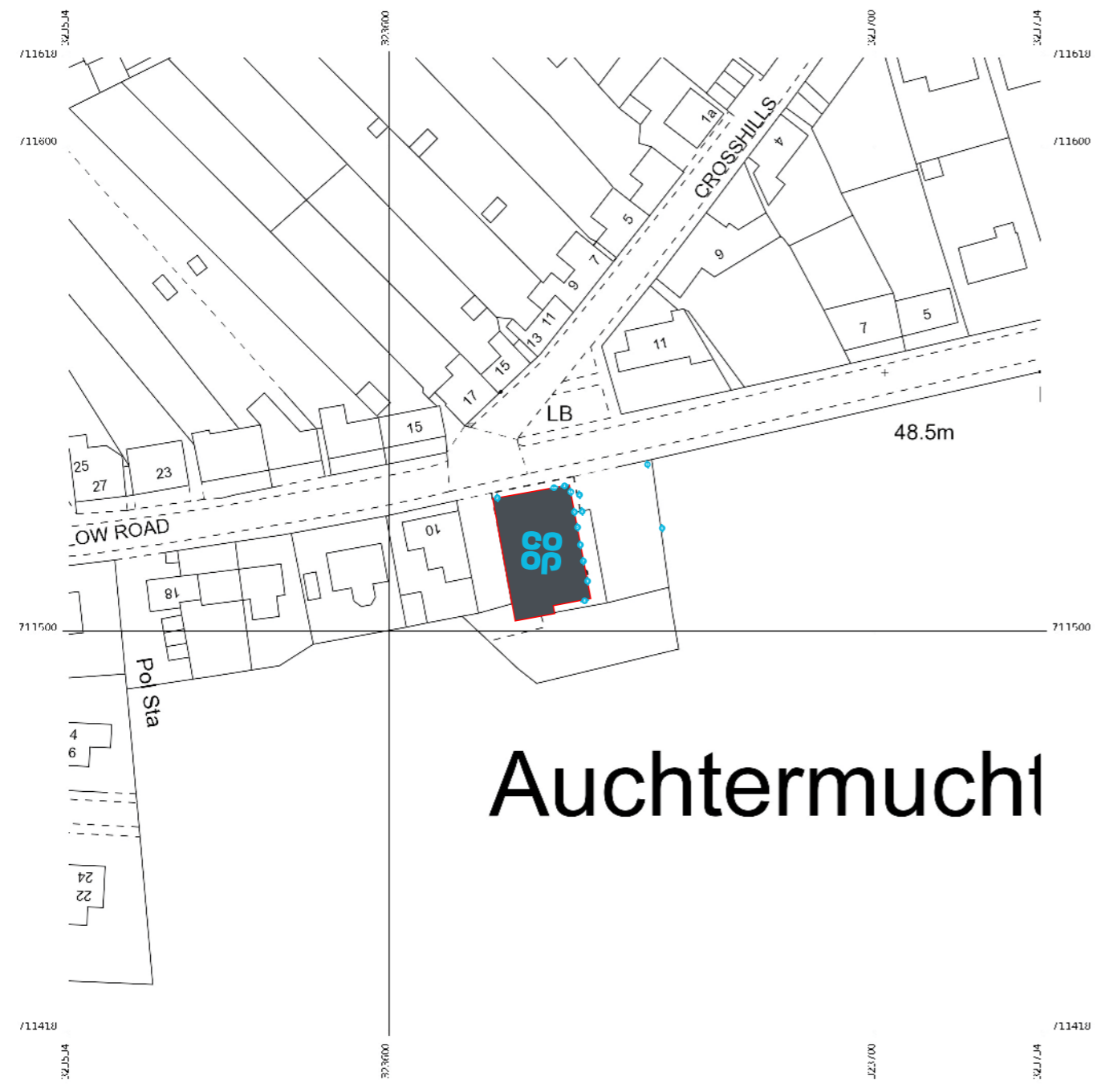
3D built-up letters to have aluminium sides, 50mm deep with 5mm Co-op BLUE acrylic faces. All visible edges, aluminium returns & mounting plate to be finished Silver Ral 9006 60% gloss.

Face illuminated by white LED's.

Services and opening hours to be applied in reflective white vinyl. Services to be digitally printed. Frame constructed from 120 x 60mm box section, coated Traffic Grey Ral 7043 30% Matt gloss.

Opening times & commodity text are indicative and T.B.C.

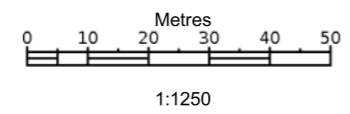
Block Plan



Auchtermuchty

Produced 20 Sep 2021 from the Ordnance Survey MasterMap (Topography) Database and incorporating surveyed revision available at this date.

The representation of a road, track or path is no evidence of a right



10, Low Rd, Auchtermuchty
KY14 7AU

- 1A - 1100mm logo
- 6 - Disclaimer post mounted
- 1B - CFN
- 7 - Cycle rack
- 2 - Projecting sign
- 8 - Deliveries
- 3 - Bag sign
- 9 - Banner frame
- 4 - Disabled parking post mounted
- 10 - Totem
- 5 - Disclaimer wall mounted

Sign positions NTS

