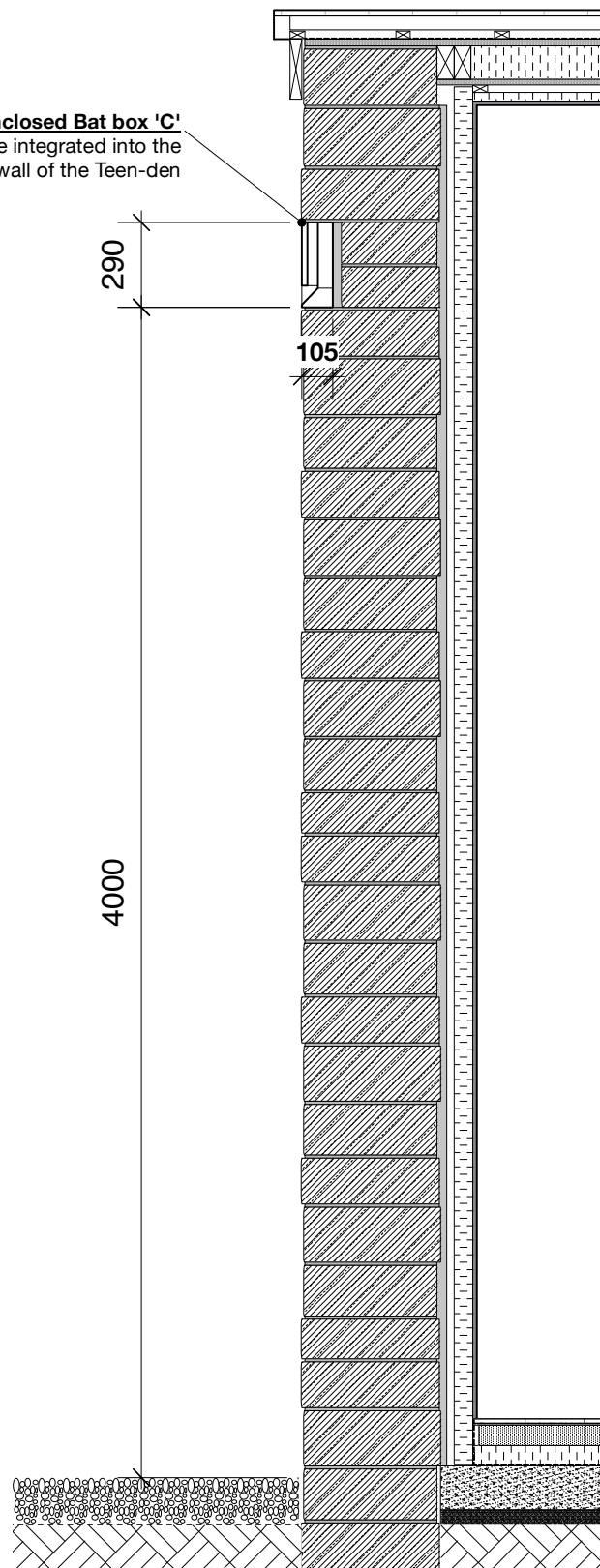


2no enclosed Bat box 'C'
to be integrated into the
gable wall of the Teen-den



enclosed Bat box 'C'

Large box

Height: 290mm
Width: 215mm
Depth: 105mm
Weight: 9.2kg

ref. code 210556 Smooth cream brick

Manufacturer: lbstock



mounted Bat box on T04

Double Crevice Bat Box

Height of back panel: 335mm
Internal height of roost chamber: 197mm
External depth of roost chamber: 69mm
External depth including roof overhang: 101mm
External width: 166mm
Weight: 1.4kg

Specifications: Exterior quality resin bonded ply, manufactured with surface sunk coated staples to resist rusting, external surfaces treated with water based woodstain, internal ceramic heat sinks.

Manufacturer: The Nestbox Company

Apex Bird Box mounted on T05

Product Apex Bird Box
Product-Code A1APE
Variations Entrance hole: 25mm, 28mm, 32mm
Material FSC Certified European Softwood
Construction Panels stapled together with surface sunk staples.
Finish Non-toxic water based stain and preservative
Dimensions Overall height: 26cm, Overall width: 20cm, Overall Depth: 16cm
Weight 0.8kg
Fixing 3 holes in back panel

Manufacturer: The Nestbox Company



Small Bird Nest Box mounted on T02

Product Small Bird Nest Box
Product-Code A1SMA
Variations Entrance hole: 25mm, 28mm, 32mm
Material FSC Certified Exterior Grade European Birch Plywood
Construction Panels stapled together with surface sunk staples.
Finish Non-toxic water based stain and preservative
Dimensions Overall height: 26cm, Overall width: 16cm, Overall Depth: 17cm
Weight 0.8kg
Fixing 2 holes in back panel

Manufacturer: The Nestbox Company



Large Bird Nest Box mounted on T03

Product Large Bird Nest Box
Product-Code A1LARZZZ
Material FSC Certified Exterior Grade European Birch Plywood
Construction Panels stapled together with surface sunk staples.
Finish Non-toxic water based stain and preservative
Dimensions Overall height: 52cm, Overall width: 21cm, Overall Depth: 19cm
Weight 3.0kg
Fixing 2 mounting holes at top of back panel

Manufacturer: The Nestbox Company



TEEN-DEN WALL TYPE as existing

Scale 1:25 @A3

74 Josephine Avenue, London, SW2 2LA
t. 020 8674 0037 f. 020 8683 9696
e. cba@cbarchitects.co.uk w. www.cbarchitects.co.uk

AS EXISTING

© CHARLES BARCLAY ARCHITECTS

REV	NOTES	DATE	BY
X	Submitted to Planning	04.10.21	AM
X	XXXXXXX	XX.XX.XX	XX

TITLE
Bat and Bird boxes as existing

PROJECT
Dower House Master Plan, Heythrop, OX7 5TL

JOB NUMBER 815
DRAWING NUMBER (E) 10
REVISION x
DATE 04.10.2021

SCALE 1:25 @ A3
DRAWN AM
CHECKED CB

CHARLES BARCLAY ARCHITECTS