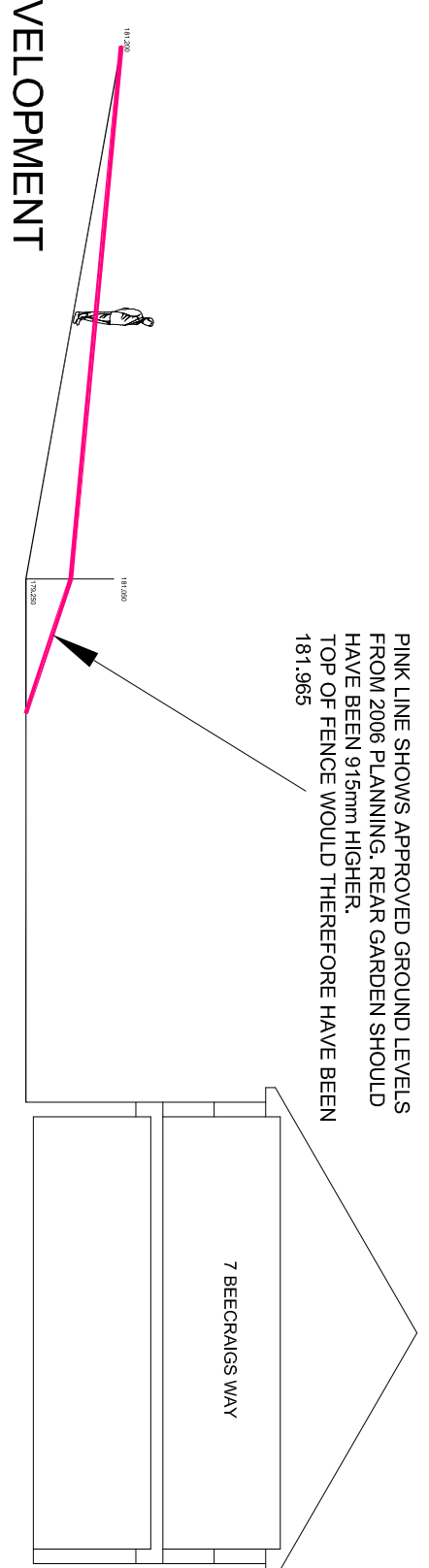
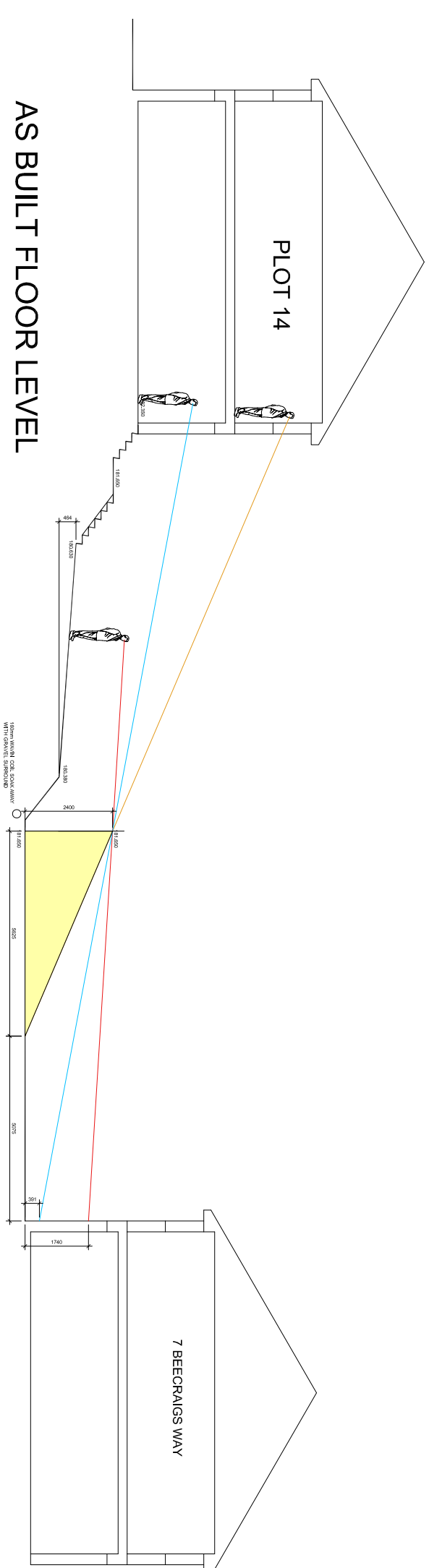


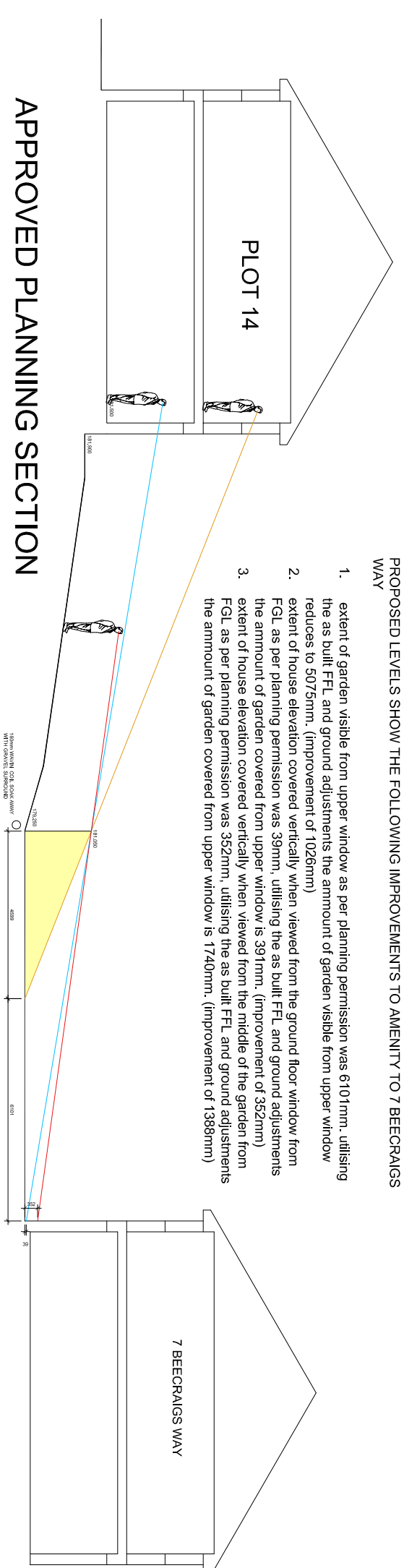
PLOT 14



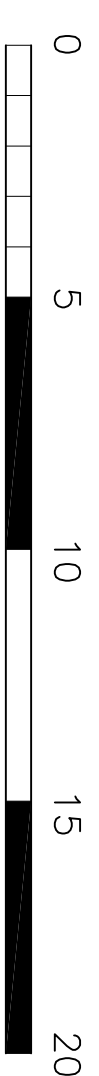
LEVELS BEFORE DEVELOPMENT



AS BUILT FLOOR LEVEL



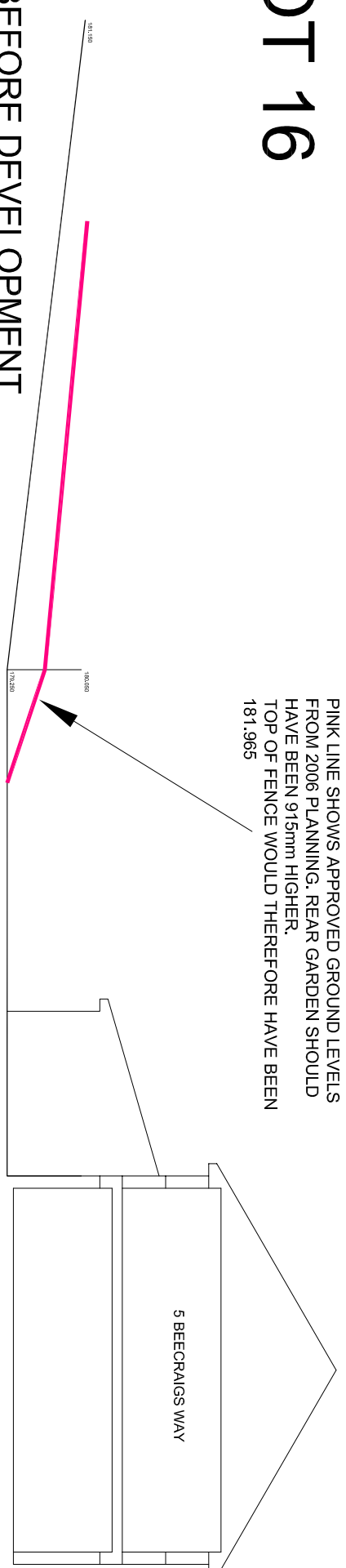
APPROVED PLANNING SECTION



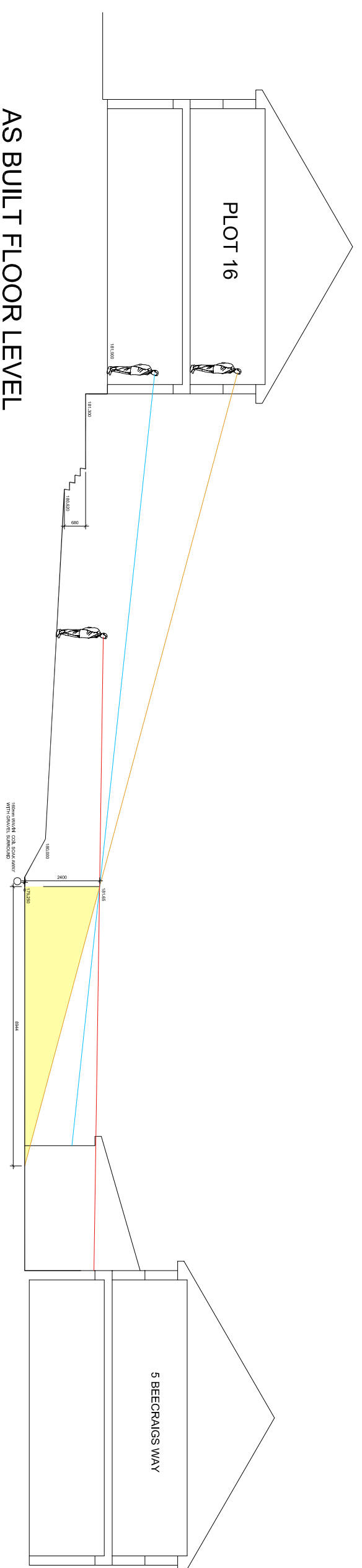
SCALEBAR (metres)

PINK LINE SHOWS APPROVED GROUND LEVELS FROM 2006 PLANNING. REAR GARDEN SHOULD HAVE BEEN 915mm HIGHER. TOP OF FENCE WOULD THEREFORE HAVE BEEN 181.965

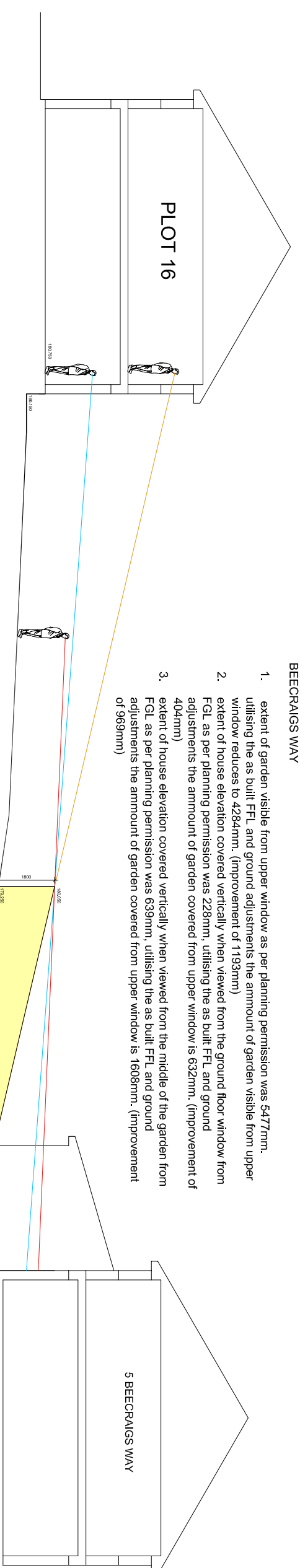
PLOT 16



LEVELS BEFORE DEVELOPMENT



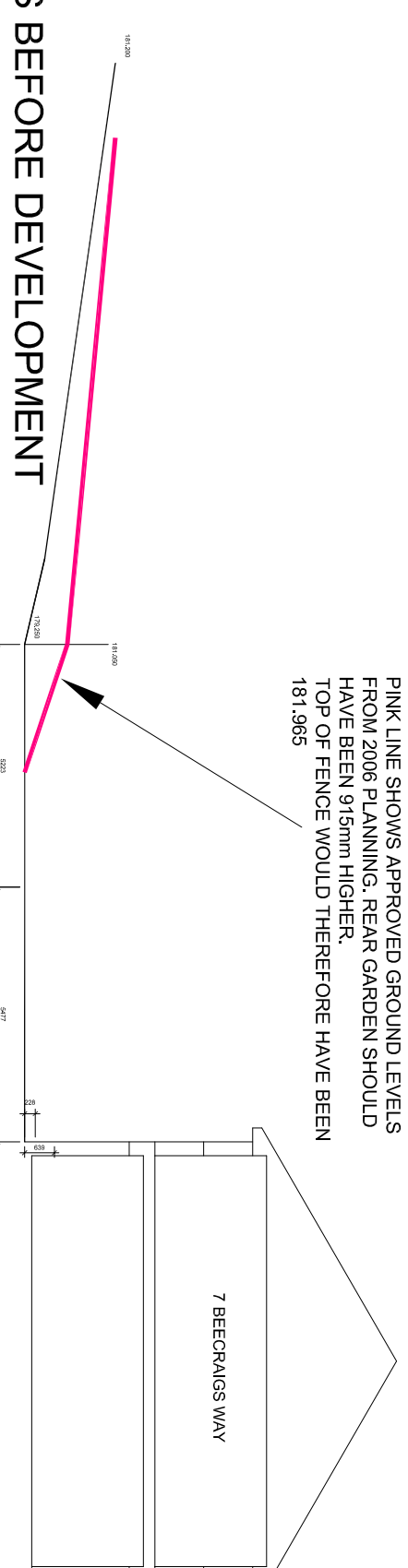
AS BUILT FLOOR LEVEL



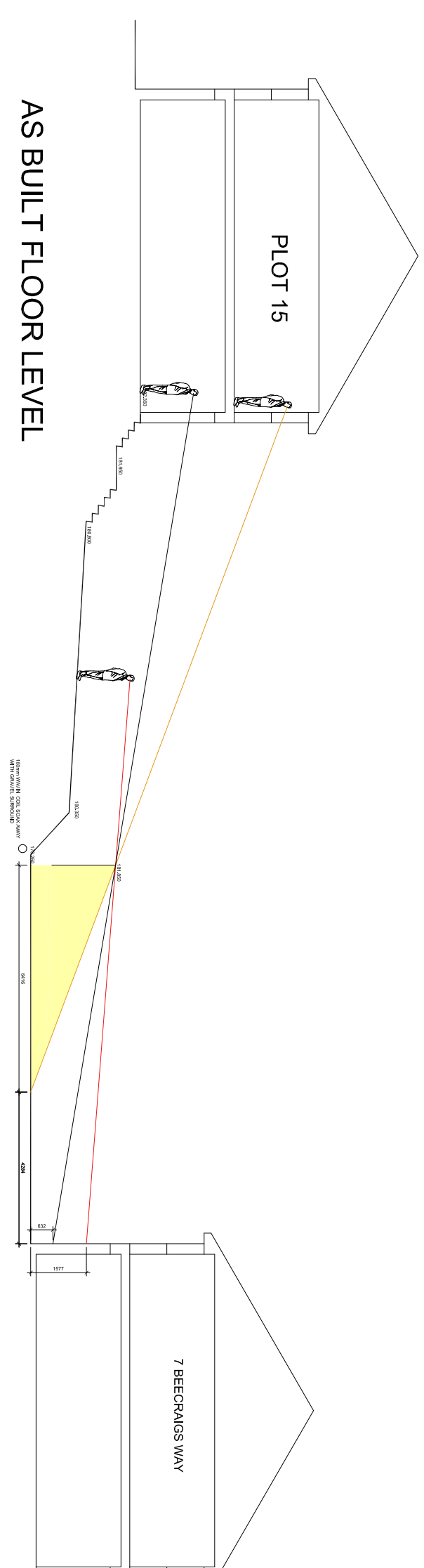
APPROVED PLANNING SECTION

1. extent of garden visible from upper window is per planning permission was 5477mm.
2. F.d. as per planning permission was 4256mm (improvement of 1189mm).
Extent of house elevation currently viewed from the ground floor window from upper window is 4256mm (improvement of 1189mm).
3. F.d. as per planning permission was 229mm, utilizing as built F.d. and ground adjustments the amount of garden covered from upper window is 6320mm. (improvement of 4031mm).
4. F.d. as per planning permission was 633mm, utilizing as built F.d. and ground adjustments the amount of garden covered from upper window is 1808mm. (improvement of 950mm).

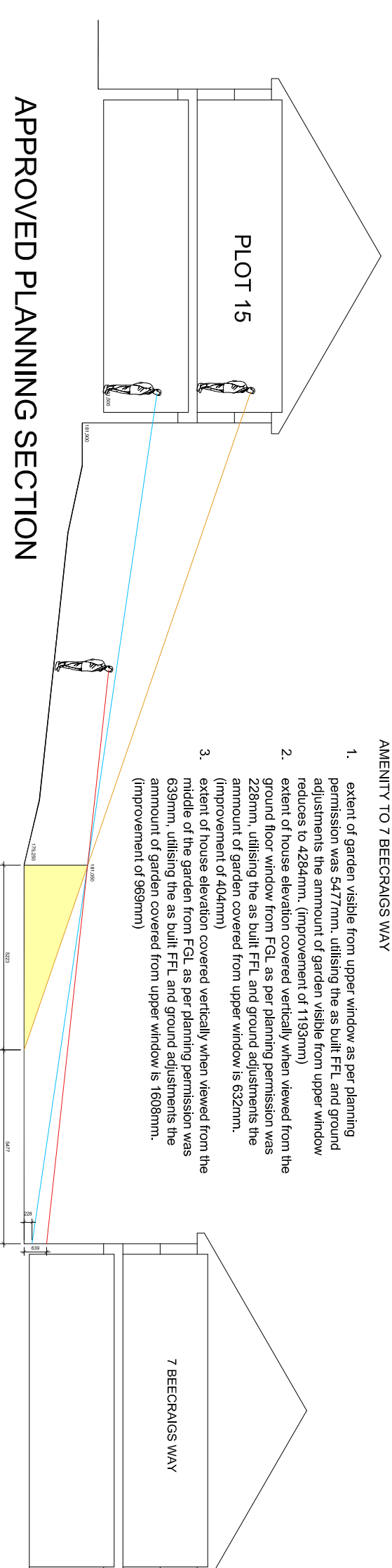
PLOT 15



LEVELS BEFORE DEVELOPMENT

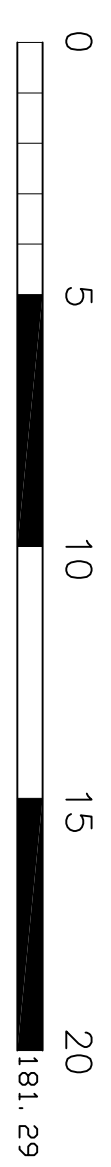


AS BUILT FLOOR LEVEL



APPROVED PLANNING SECTION

1. extent of garden visible from upper window as per planning application (13.82m) and as per planning application with adjustments (the amount of garden visible from upper window reduced to 9.24m) (improvement of 13.82m)
2. extent of house elevation covered from garden (when viewed from the ground floor window from 15.45m as per planning permission) was 63.9mm (improvement of 63.9mm)
3. extent of house elevation covered vertically when viewed from the garden (when viewed from the garden) was 1.068mm (improvement of 1.068mm)



SCALEBAR (metres)

LEVELS TAKEN 9th SEPTEMBER 2021

