

Design and Access Statement

The School House was built in the 17th Century, and is rendered and painted in Suffolk Pink with arched gothic windows to the front elevation.

The rear of the house is constructed more recently, in red brick, and is somewhat at odds with the front. Its internal spaces do not work well together, nor do they have a positive relationship with the large south-facing garden.



Existing Garden Elevation



Consented Garden Elevation



Proposed Garden Elevation

This is now 45 cm higher than the consented scheme

The proposed design seeks to remedy these deficiencies by partially demolishing the red-brick rear and removing the existing low-quality conservatory. These would be replaced with a larger glazed room, with masonry piers. The piers and existing brickwork elsewhere would be rendered and also painted Suffolk Pink.

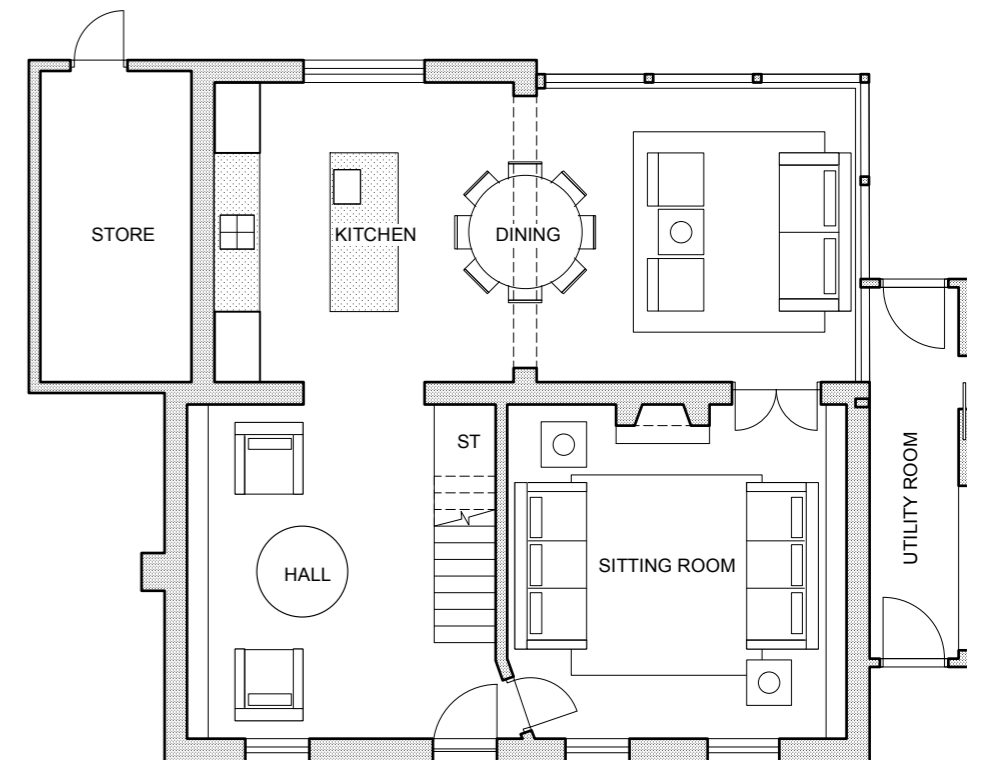
A side extension is proposed to sit between the existing garage and house, behind a timber-boarded wall, resembling the existing garden fence and garage cladding. A discrete door would provide a 'back' entrance, directly into a utilities area, with access to a guest wc.

The proposals create a single house with greater cohesion, and improved functionality.

The design is of high quality, and will enhance the original building. However, these changes will be not appreciable from the road, nor from the neighbours who are set substantially apart, and whose gardens are well screened.



Existing Ground Floor Plan



Proposed Ground Floor Plan

A 07.10.21 Proposed rear extension now 45 cm taller than the approved scheme

| Revision | Date | Description |
|----------|----------|---|
| A | 07.10.21 | Proposed rear extension now 45 cm taller than the approved scheme |