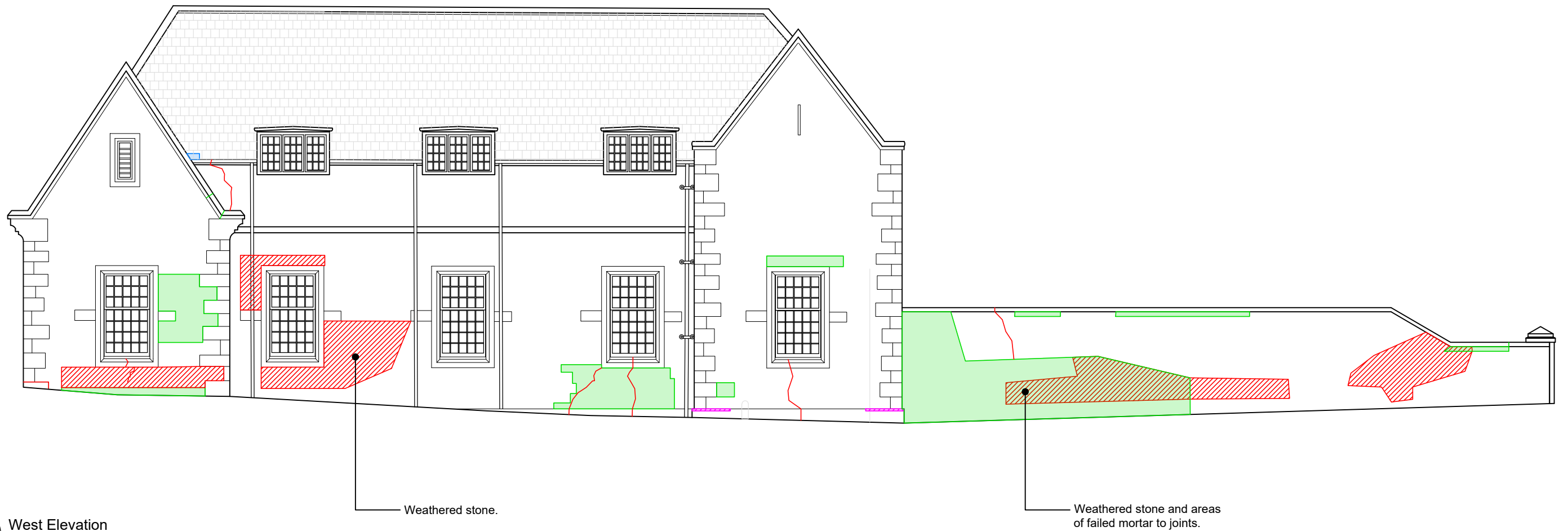


Condition Key:

- Unstable areas with little mortar
- Heavily weathered areas
- Failed or missing material
- Failed or missing mortar
- Weathered decorative elements
- Invasive vegetation
- Crack

See individual notes for specific details for each item.

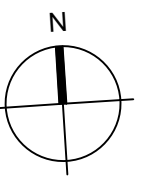
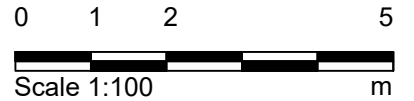


01 West Elevation
1203 1:100 @ A3

Weathered stone.

Weathered stone and areas of failed mortar to joints.

Purpose of Issue:
FOR_PLANNING



Notes

1. Any dwg format drawing is to be read in conjunction with and at the scale of the accompanying pdf.
2. Where colours other than black or grey are used, the drawing must be plotted in colour.
3. For status 'C' (Construction) drawings all dimensions are to be checked on site by the contractor, scaling is for Local Authority purposes only.
4. Unless otherwise indicated, all dimensions are in millimeters.
5. All information on this drawing is to be read in conjunction with the relevant Donald Insall Associates specification and trade contractors' drawings and information by specialists.
6. In the event of any discrepancy, please contact us immediately.
7. This drawing may contain survey information by others and is to be used solely for the purposes for which it was issued.
8. These are uncontrolled documents issued for information purposes only. If you have any queries regarding the drawings, please contact DIA immediately.
9. Please note DIA cannot be held responsible for any errors arising from changes made to an uncontrolled dwg file.

© 2019 DONALD INSALL ASSOCIATES LTD

Drawing Status		Revision	
F Feasibility		Rev	Date
S Sketch Design		Dwn	Auth
P Planning		Revision	
B Building Control			
D Design Development			
M Measurement			
T Tender			
C Construction			
R Record			

Donald Insall Associates
Chartered Architects and Historic Building Consultants

12 Devonshire Street
London W1G 7AB
(+44) 020 7245 9888
london@insall-architects.co.uk

Project **RC.01** No **09-1203**

Scale (A3) **1:100** Status **P** Revision **2**

Gas House, Raby Castle

As Existing
West Elevation