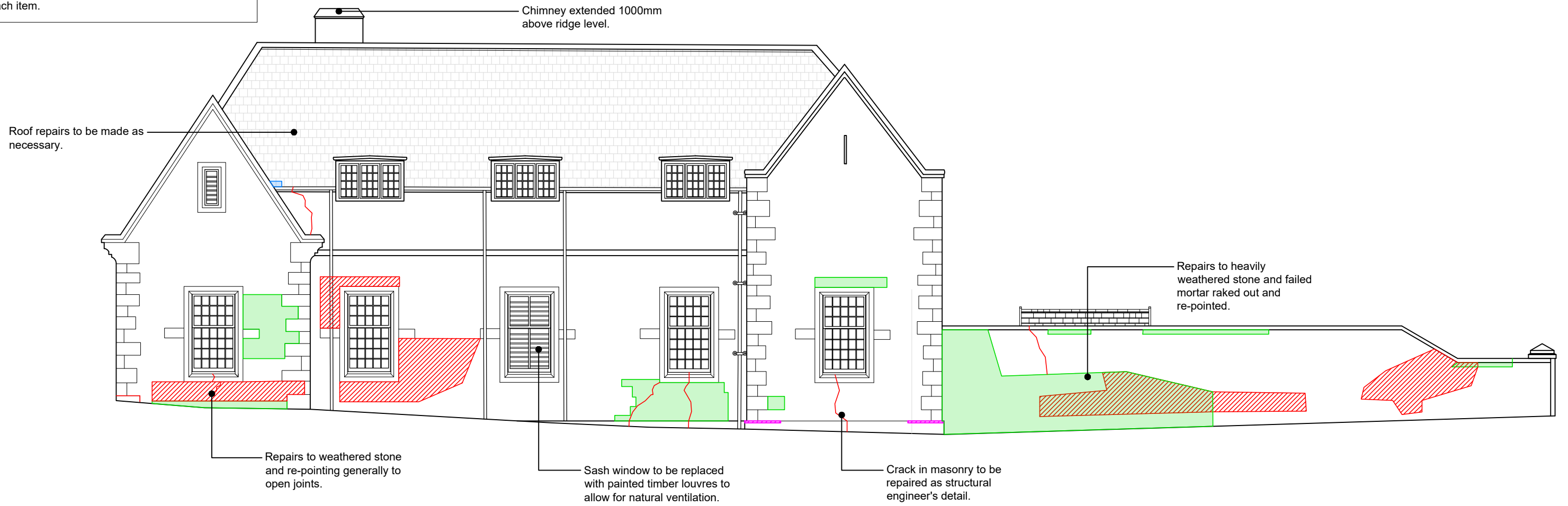


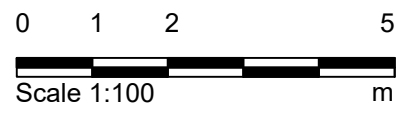
Repairs Key:

- Areas to be rebuilt
- Mortar slurry to heavily weathered stone
- New material
- New mortar
- Repairs to decorative elements
- Vegetation to be removed
- Re-point crack in lime mortar

See individual notes for specific details for each item.



01 West Elevation  
2203 1:100 @ A3



Purpose of Issue:  
FOR\_PLANNING

**Notes**

1. Any dwg format drawing is to be read in conjunction with and at the scale of the accompanying pdf.
2. Where colours other than black or grey are used, the drawing must be plotted in colour.
3. For status 'C' (Construction) drawings all dimensions are to be checked on site by the contractor, scaling is for Local Authority purposes only.
4. Unless otherwise indicated, all dimensions are in millimeters.
5. All information on this drawing is to be read in conjunction with the relevant Donald Insall Associates specification and trade contractors' drawings and information by specialists.
6. In the event of any discrepancy, please contact us immediately.
7. This drawing may contain survey information by others and is to be used solely for the purposes for which it was issued.
8. These are uncontrolled documents issued for information purposes only. If you have any queries regarding the drawings, please contact DIA immediately.
9. Please note DIA cannot be held responsible for any errors arising from changes made to an uncontrolled dwg file.

Drawing Status				
F	Feasibility			
S	Sketch Design			
P	Planning			
B	Building Control			
D	Design Development			
M	Measurement			
T	Tender			
C	Construction			
R	Record			
1	18/06/2021	EKN		Issued for Planning
0	23/04/2021	EKN	FM	Initial Issue
Rev	Date	Dwn	Auth	Revision

**Donald Insall Associates**  
Chartered Architects and Historic Building Consultants

12 Devonshire Street  
London W1G 7AB  
(+44) 020 7245 9888  
london@insall-architects.co.uk

Project: RC.01 No: 09-2203

Scale (A3): 1:100 Status: P Revision: 1

Gas House, Raby Castle

As Proposed West Elevation