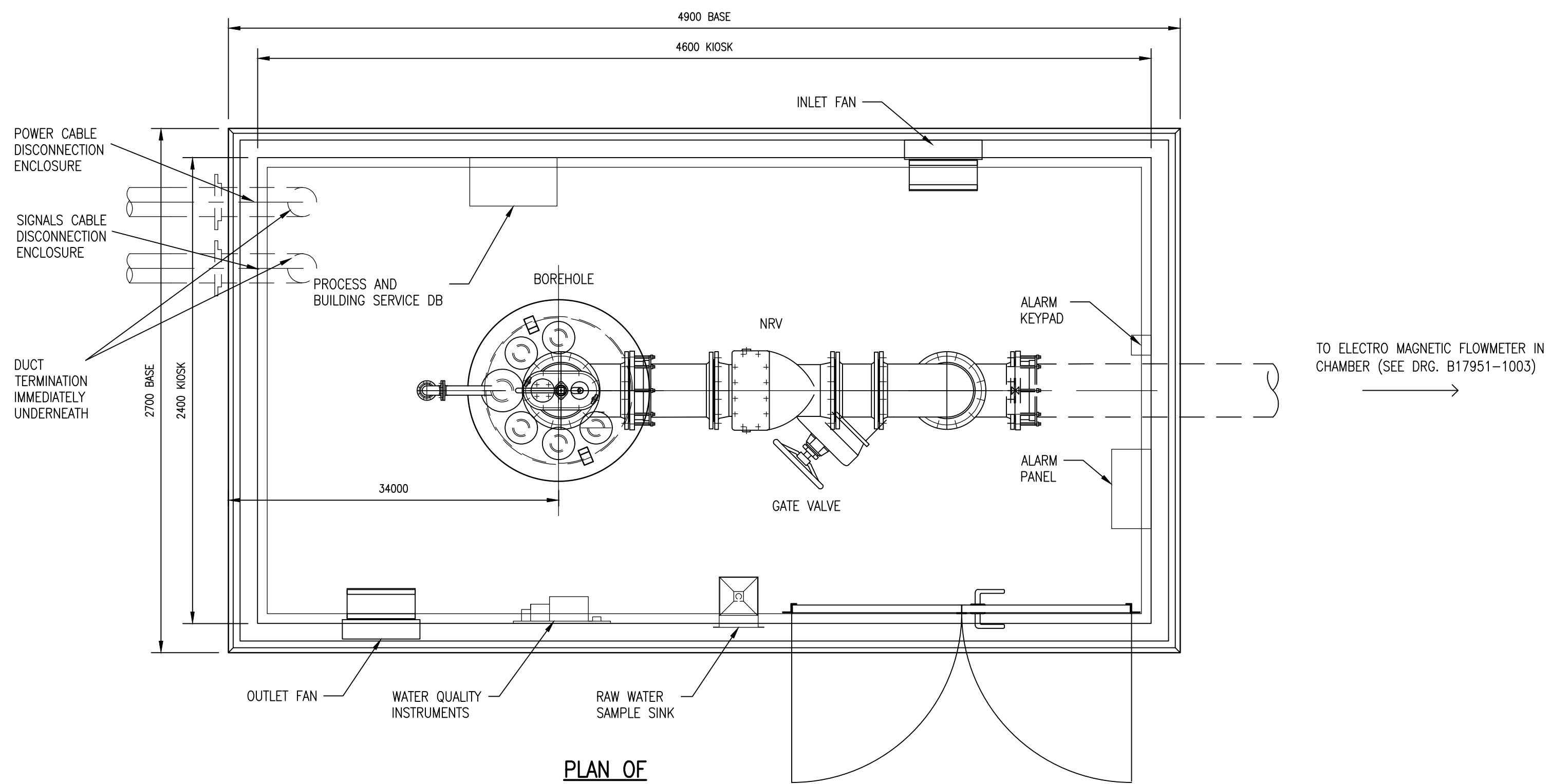
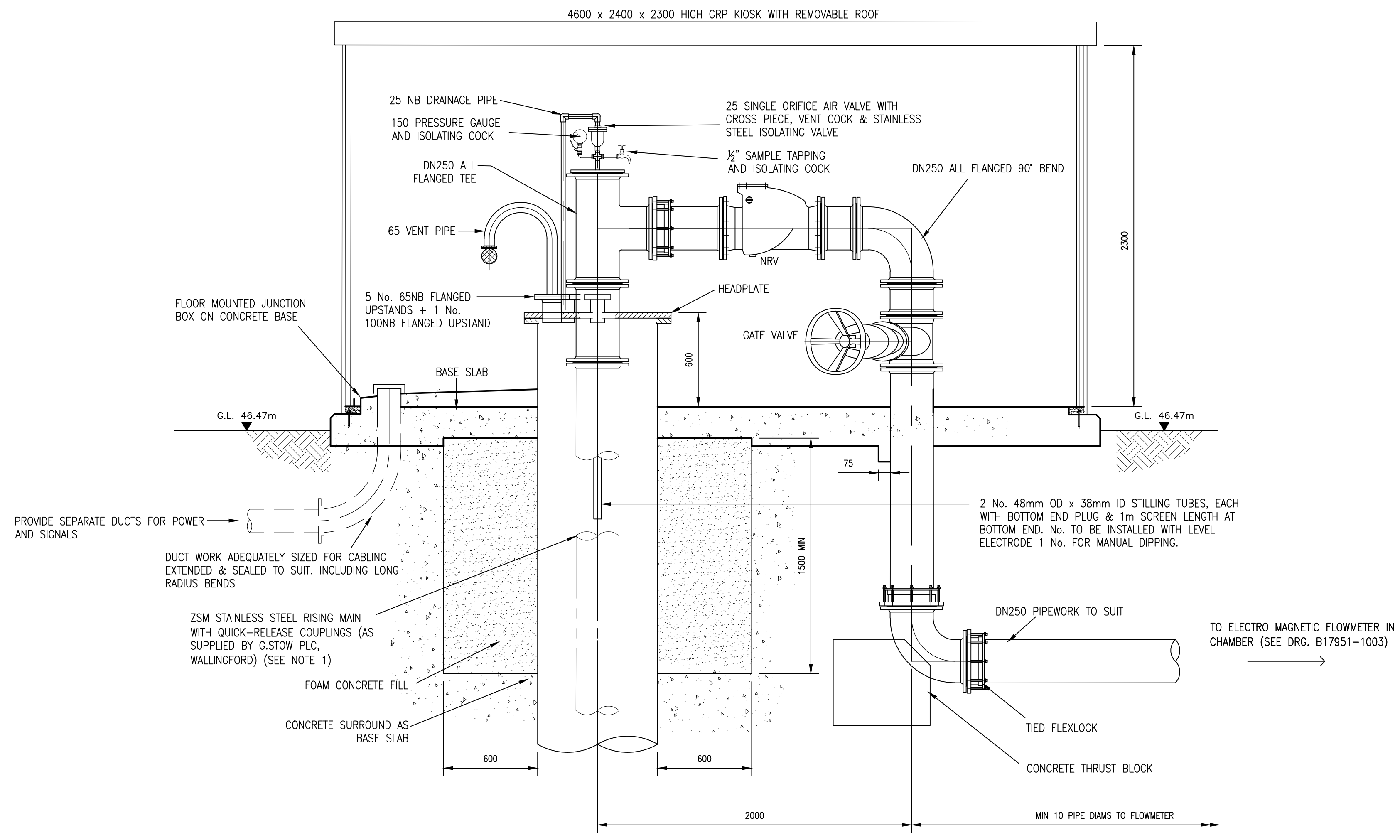


NOTES

1. RISER PIPE TO BE OF SUFFICIENT LENGTH TO LOCATE THE BOTTOM OF THE PUMP BETWEEN 5m AND 7m ABOVE THE BOTTOM OF THE BOREHOLE. FLANGED D.I. PIPEWORK MAY BE PROVIDED WHERE SPECIFIED - EITHER BOLTED OR UTILISING THREE BOLTED CLAMPS.
2. RISER PIPE TO BE SUITABLY RATED FOR MAXIMUM WORKING PRESSURE AND SIZE TO LIMIT VELOCITIES IN THE BOREHOLE RISER TO LESS THAN 2.5m/s. OTHERWISE, PIPE VELOCITIES TO BE LIMITED TO 2.2m/s
3. ALL FIXTURES, TIES, TAGS AND FITTINGS SHALL BE STAINLESS STEEL TO BS EN ISO 3506 GRADE A2-70, OR EQUAL APPROVED.
4. DIP TUBES LOW LEVEL CUT-OUTS AND TRANSDUCERS SHALL TERMINATE 1m BELOW LOWEST POINT ON PUMPSETS.
5. ALL HEADPLATE SURFACES, INCLUDING CLEAR BOLT HOLES, SHALL BE COATED WITH A DWI APPROVED EPOXY FINISH APPLIED BY THE FLUIDISED BED PROCESS.
6. PIPEWORK AND FITTINGS (OTHER THAN RISER PIPEWORK) SHALL BE DUCTILE IRON OR FABRICATED STEEL AND COATED WITH A DWI APPROVED EPOXY RESIN.
7. ALL FLANGES SHALL HAVE A MINIMUM RATING OF NP16.
8. KIOSK TO BE PROVIDED SUITABLE FOR MCC & CONTROLS WHERE DETAILED IN THE PROJECT SPECIFIC REQUIREMENTS IN ACCORDANCE WITH WW DESIGN STANDARD.
9. CERTIFIED LIFTING EYES SHALL BE PROVIDED ON THE HEAD PLATE. A BRASS PLATE DETAILING THE OVERALL WEIGHT OF PUMP AND PIPEWORK SHALL BE BOLTED TO THE HEAD PLATE.
10. WITH THE EXCEPTION OF THE VENT PIPE THE HEADPLATE AND FLANGED CONNECTIONS SHALL BE HERMETICALLY SEALED WITH A SUITABLE DWI APPROVED MASTIC SEALANT.
11. THIS DRAWING IS TO BE READ IN CONJUNCTION WITH CONCRETE DESIGN STANDARD 151
12. FOR PIPEWORK WHERE OPERATING PRESSURES ARE 7 BAR AND ABOVE, ALL ABOVE GROUND PIPEWORK SHALL BE TIED
13. FOR OPERATING PRESSURES BELOW 7 BAR, FULLY END LOAD BEARING JOINTING SYSTEMS CAN BE CONSIDERED.
14. FOR ALL ABOVE GROUND HEADWORK PIPEWORK A RECORD SHALL BE KEPT VERIFYING ALL TORQUE SETTINGS OF THE INSTALLED PIPEWORK JOINTS. RECORD TO BE INCLUDED WITHIN THE HANDOVER DOCUMENTATION



PLAN OF BOREHOLE KIOSK
SCALE 1:20



TYPICAL SECTION THROUGH BOREHOLE KIOSK
SCALE 1:20

REVISIONS	DRN	CHK	APP	DATE

ISSUED FOR REVIEW	PAO	DES	CHK	APP	DATE

AECOM
Belvedere House
Pynes Hill, Exeter
Devon EX2 5WS
T +44(0)1392 663200
F +44(0)1392 663299
www.aecom.com

CONSULTANT	REVISIONS	DRN	DES	CHK	APP	DATE

B17951/1002
IVYFIELDS WTW

NEW BOREHOLE

**BOREHOLE KIOSK
TYPICAL ARRANGEMENT**

PRELIMINARY

ORIGINAL DRAWING SIZE	A1	SCALE	1:20
DRAWING NUMBER	B17951/1002	REV.	P1