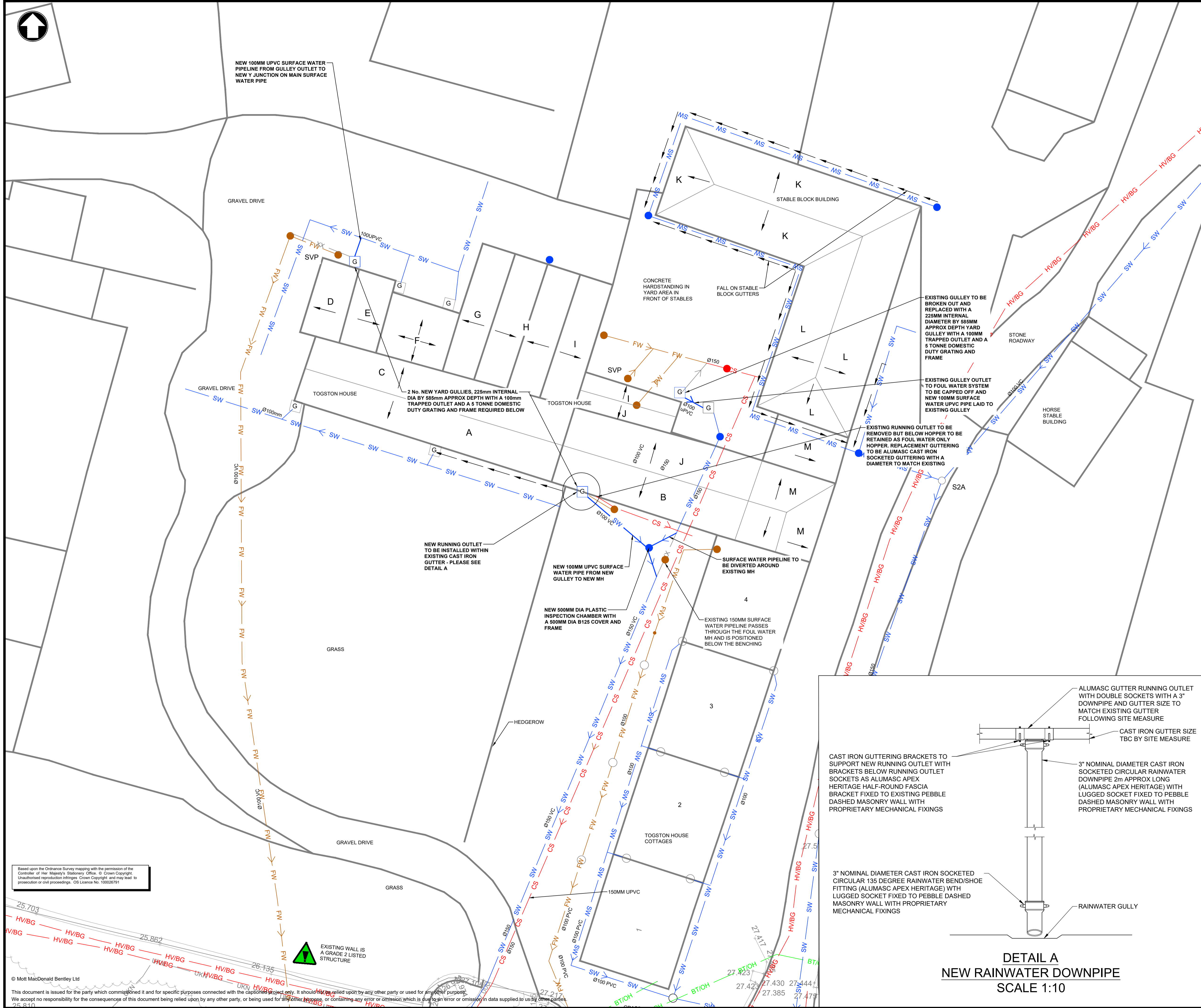




NEW 100MM UPVC SURFACE WATER PIPELINE FROM GULLEY OUTLET TO NEW Y JUNCTION ON MAIN SURFACE WATER PIPE



- Notes**
1. ALL DIMENSIONS ARE SHOWN IN MILLIMETRES (mm), UNLESS NOTED OTHERWISE.
  2. ALL LEVELS ARE SHOWN IN METRES (m) ABOVE ORDANCE DATUM, UNLESS NOTED OTHERWISE.
  3. ALL UTILITY AND SERVICES INFORMATION IS SHOWN INDICATIVELY AND NEEDS TO BE CONFIRMED ON SITE.

- Key to symbols**
- ELEC/OH — ELECTRICITY OVERHEAD
  - HV/BG — HV ELECTRICITY BELOW GROUND
  - CS — EXISTING COMBINED SEWER
  - FW — EXISTING FOUL SEWER
  - SW — EXISTING SURFACE WATER SEWER
  - SW — NEW APPROX 12m LONG SURFACE WATER SEWER
  - XX — ABANDONED SERVICE
  - ↘ — DIRECTION OF FALL ON ROOF
  - + 27.591 — EXISTING LEVELS
  - G — EXISTING GULLEY
  - G — NEW GULLEY

**Reference drawings**

12232-000-DWG-PIP-Y01-001	TOGSTON HOUSE - SITE LOCATION PLAN
12232-000-DWG-PIP-Y01-002	TOGSTON HOUSE - EXISTING SITE PLAN
12232-000-DWG-PIP-Y01-004	TOGSTON HOUSE - EXISTING ELEVATIONS
12232-000-DWG-PIP-Y01-005	TOGSTON HOUSE - PROPOSED ELEVATIONS

**Revision Table**

Rev	Date	Drawn	Description	Ch'kd	App'd
P01.1					

Status Stamp: **NOT FOR CONSTRUCTION**

**MMB**  
MOTT MACDONALD BENTLEY

Mott MacDonald Bentley  
Spectrum 5, Spectrum Business Park  
Seaham, SR7 7TT  
United Kingdom

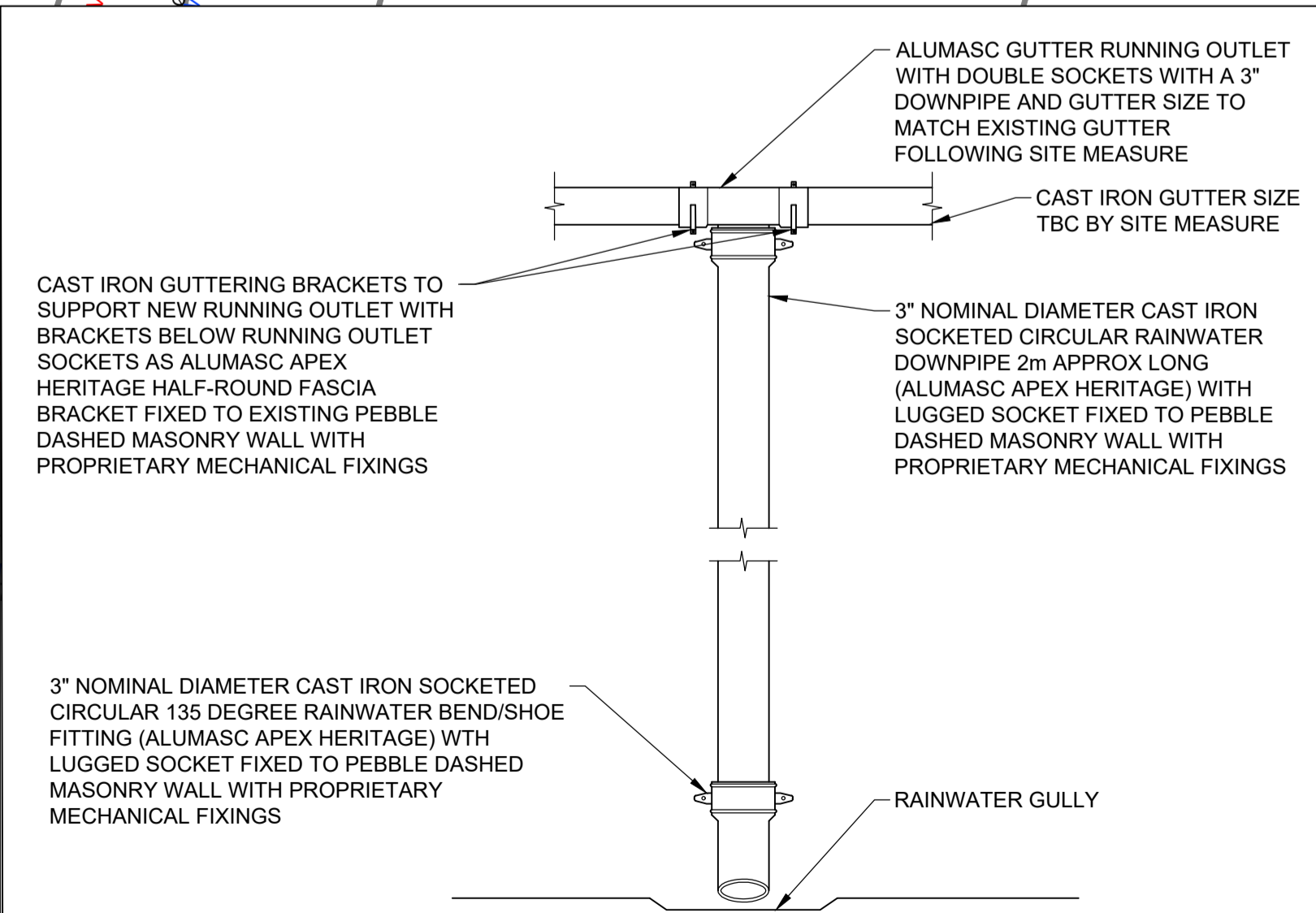
E info@mm-b.co.uk  
W www.mm-b.co.uk

Client: **NORTHUMBRIAN WATER** living water

Title: **Togston Hall STW  
Togston House  
Surface Water Sewer Diversions**

Sheet 1 of 1

Designed	R Nixon	RN	Eng.check.	
Drawn			Coordination	
Dwg.check.			Approved	
MMB Project Number	RD20	Scale at A1	1:100	Security STD
Suitability Description	Initial Status Work in Progress (WIP)	Suit. Code	S0	
Drawing Number	12232-000-DWG-PIP-Y01-003	Rev	P01.1	



**DETAIL A  
NEW RAINWATER DOWNPIPE  
SCALE 1:10**

Based upon the Ordnance Survey mapping with the permission of the Controller of Her Majesty's Stationery Office. © Crown Copyright. Unauthorised reproduction infringes Crown Copyright and may lead to prosecution or civil proceedings. OS Licence No. 100028791

© Mott MacDonald Bentley Ltd  
This document is issued for the party which commissioned it and for specific purposes connected with the captioned project only. It should not be relied upon by any other party or used for any other purpose. We accept no responsibility for the consequences of this document being relied upon by any other party, or being used for any other purpose, or containing any error or omission which is due to an error or omission in data supplied to us by other parties.