

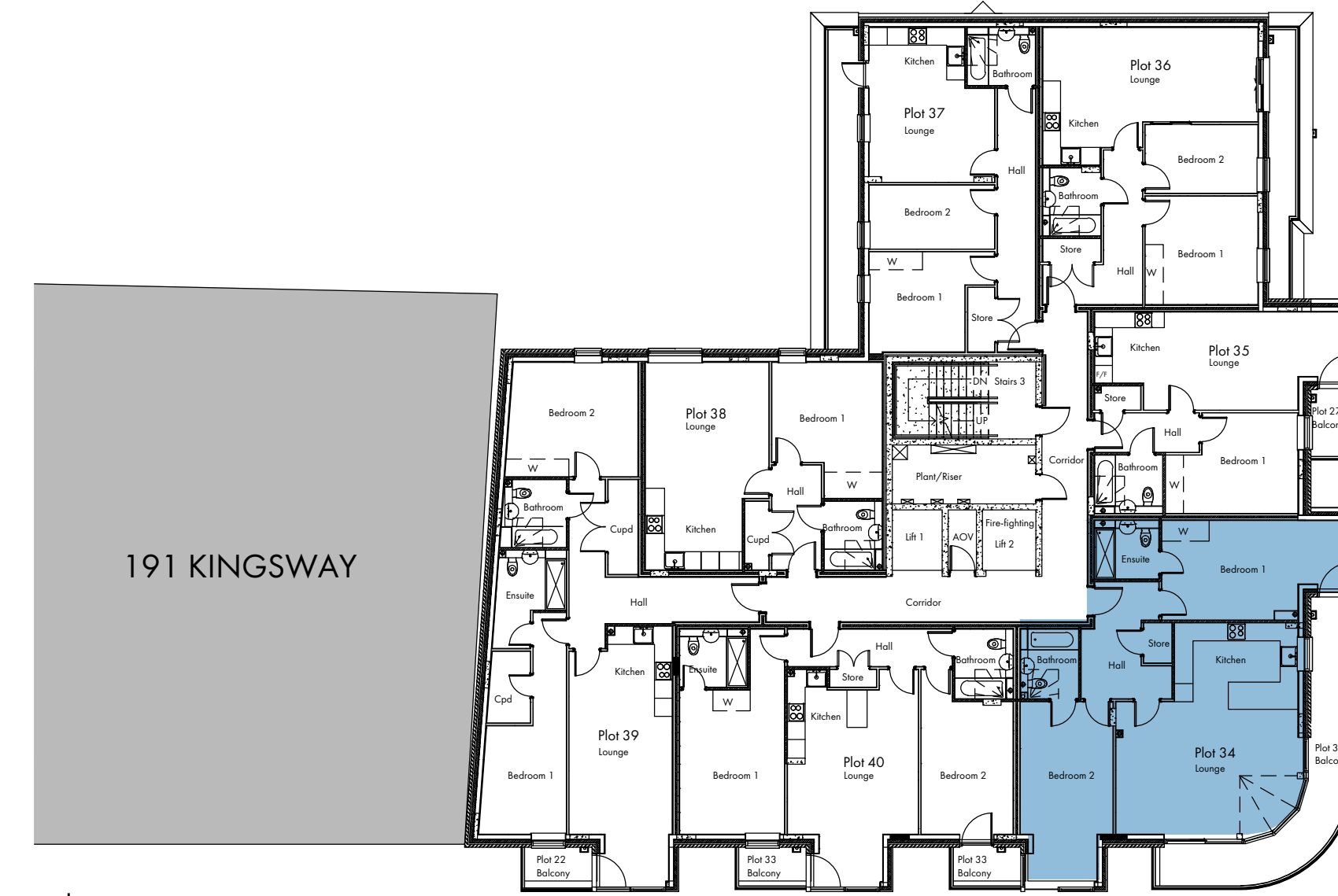
General Note(s):
 - This document contains confidential and proprietary information that cannot be reproduced or divulged, in whole or in part, without prior written authorisation from RDJW Architects Limited.
 - RDJW Architects Limited is to be notified immediately of suspected omissions or discrepancies.
 - All dimensions in millimetres, unless otherwise stated.



Schedule of Accommodation

- Plot 34: 3 Bedroom Apartment
- Plot 35: 1 Bedroom Apartment
- Plot 36: 2 Bedroom Apartment
- Plot 37: Affordable 2 Bedroom Apartment
- Plot 38: 1 Bedroom Apartment
- Plot 39: 2 Bedroom Apartment
- Plot 40: 2 Bedroom Apartment

FOURTH FLOOR PLAN (As approved under BH2020/00355)



Schedule of Accommodation

- Plot 34: 2 Bedroom Apartment
- Plot 35: 1 Bedroom Apartment
- Plot 36: 2 Bedroom Apartment
- Plot 37: Affordable 2 Bedroom Apartment
- Plot 38: 1 Bedroom Apartment
- Plot 39: 2 Bedroom Apartment
- Plot 40: 2 Bedroom Apartment

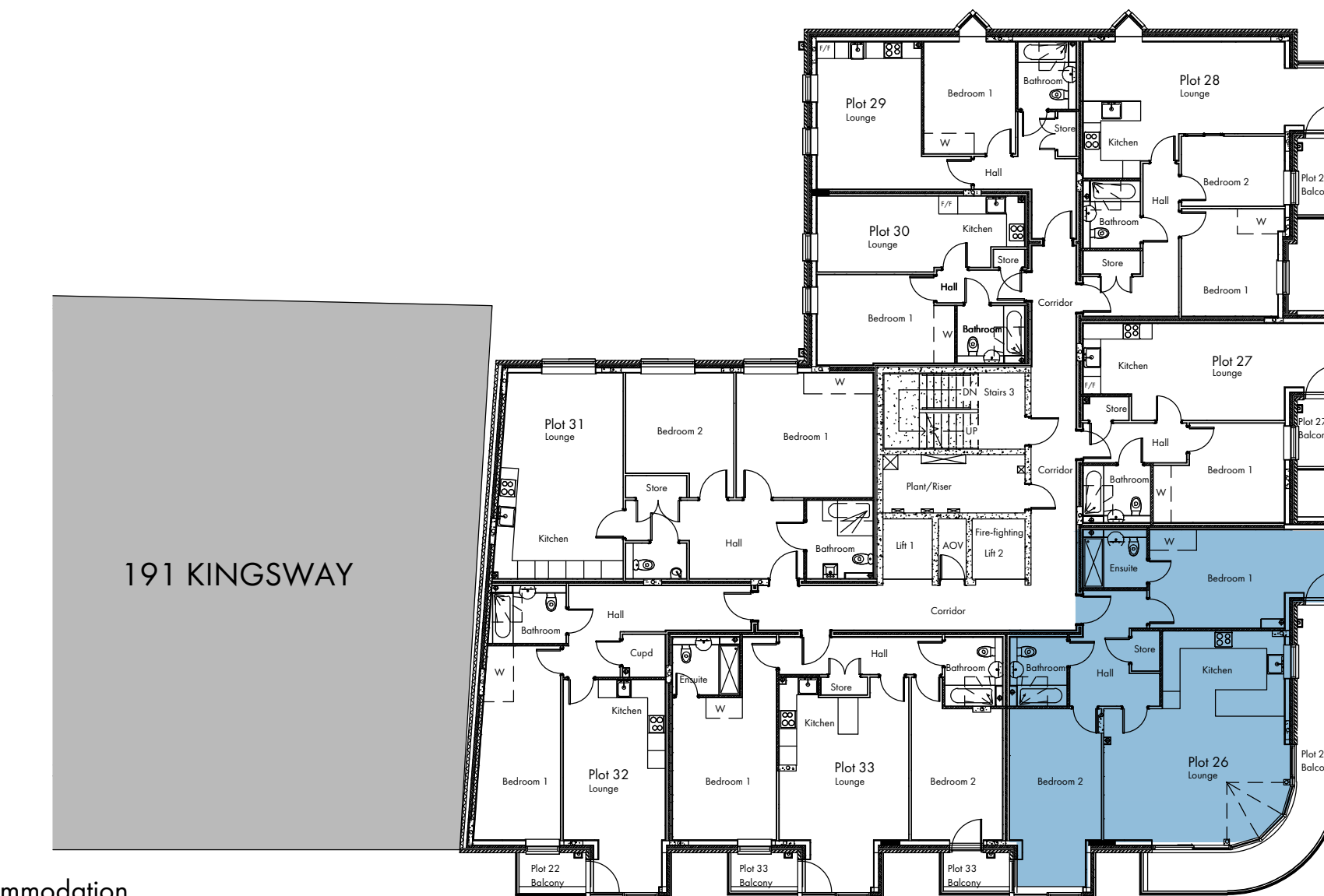
FOURTH FLOOR PLAN - With amendment



Schedule of Accommodation

- Plot 26: 3 Bedroom Apartment
- Plot 27: 1 Bedroom Apartment
- Plot 28: Affordable 2 Bedroom Apartment
- Plot 29: 1 Bedroom Studio Apartment
- Plot 30: 1 Bedroom Studio Apartment
- Plot 31: Affordable 2 Bedroom Apartment
- Plot 32: 1 Bedroom Apartment
- Plot 33: 2 Bedroom Apartment

THIRD FLOOR (As approved under BH2020/00355)



Schedule of Accommodation

- Plot 26: 2 Bedroom Apartment
- Plot 27: 1 Bedroom Apartment
- Plot 28: Affordable 2 Bedroom Apartment
- Plot 29: 1 Bedroom Studio Apartment
- Plot 30: 1 Bedroom Studio Apartment
- Plot 31: Affordable 2 Bedroom Apartment
- Plot 32: 1 Bedroom Apartment
- Plot 33: 2 Bedroom Apartment

THIRD FLOOR PLAN - With amendment



D	Minor amendment for planning	26.08.21	DW
C	Plans updated for planning	21.01.20	DW
B	Plans updated for planning	01.11.19	DW
A	Plans updated for planning	28.10.19	DW
Originator	JMG/LW	Approved	
Date	17.09.2019	Scale	1:200 @ A1
Drawing No.	5471-037	Rev.	D
		Sheet No.	1/1