

NOTES

PROJECT No. 236531

CELL No. 90846

PROJ No.			
PROJ No.			
PROJ No.	236531	31/08/21	WHP/VHF
3	PLANNING		
PROJ No.	173537	07/06/16	HFC/HFC
2	PLANNING ISSUE		
PROJ No.	173537	24/05/16	PS PS
1	CONVERSION		
ISS	REVISION	DATE	DRN APP



CELLNEX UK  
 R+, 4TH FLOOR, 2 BLA GRAVE STREET, READING, RG1 1AZ  
 Tel. 020 4526 8553

SITE No. 87235  
 GREENFORD GREENFORD ROAD  
 ALLIED SANIF PLC  
 412 GREENFORD ROAD  
 EALING  
 GREATER LONDON 3  
 UB6 9AH

NGR TQ 14430 82170

OS GRID 514430 182170

TITLE  
 SITE PLAN  
 PROPOSED  
 H3G & EE LTD

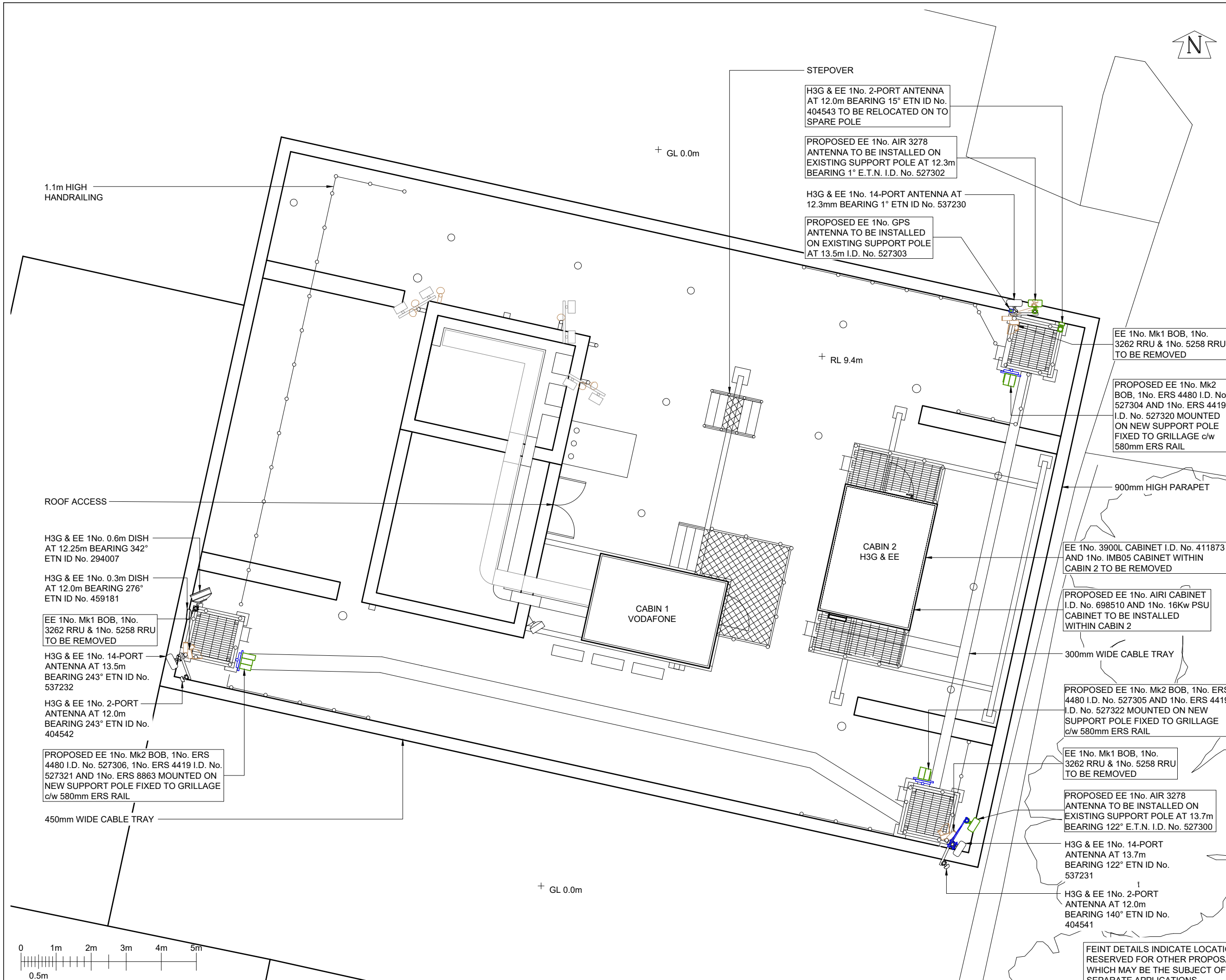
SCALE 1:100

DRAWN PS 23/05/16

APPROVED WHP 31/08/21

DRG No. Sheet 1 of 1 Rev

87235-02-100-MD003 3



1.1m HIGH HANDRAILING

ROOF ACCESS

H3G & EE 1No. 0.6m DISH AT 12.25m BEARING 342° ETN ID No. 294007

H3G & EE 1No. 0.3m DISH AT 12.0m BEARING 276° ETN ID No. 459181

EE 1No. Mk1 BOB, 1No. 3262 RRU & 1No. 5258 RRU TO BE REMOVED

H3G & EE 1No. 14-PORT ANTENNA AT 13.5m BEARING 243° ETN ID No. 537232

H3G & EE 1No. 2-PORT ANTENNA AT 12.0m BEARING 243° ETN ID No. 404542

PROPOSED EE 1No. Mk2 BOB, 1No. ERS 4480 I.D. No. 527306, 1No. ERS 4419 I.D. No. 527321 AND 1No. ERS 8863 MOUNTED ON NEW SUPPORT POLE FIXED TO GRILLAGE c/w 580mm ERS RAIL

450mm WIDE CABLE TRAY

STEPOVER

H3G & EE 1No. 2-PORT ANTENNA AT 12.0m BEARING 15° ETN ID No. 404543 TO BE RELOCATED ON TO SPARE POLE

PROPOSED EE 1No. AIR 3278 ANTENNA TO BE INSTALLED ON EXISTING SUPPORT POLE AT 12.3m BEARING 1° E.T.N. I.D. No. 527302

H3G & EE 1No. 14-PORT ANTENNA AT 12.3mm BEARING 1° ETN ID No. 537230

PROPOSED EE 1No. GPS ANTENNA TO BE INSTALLED ON EXISTING SUPPORT POLE AT 13.5m I.D. No. 527303

EE 1No. Mk1 BOB, 1No. 3262 RRU & 1No. 5258 RRU TO BE REMOVED

PROPOSED EE 1No. Mk2 BOB, 1No. ERS 4480 I.D. No. 527304 AND 1No. ERS 4419 I.D. No. 527320 MOUNTED ON NEW SUPPORT POLE FIXED TO GRILLAGE c/w 580mm ERS RAIL

900mm HIGH PARAPET

EE 1No. 3900L CABINET I.D. No. 411873 AND 1No. IMB05 CABINET WITHIN CABIN 2 TO BE REMOVED

PROPOSED EE 1No. AIRI CABINET I.D. No. 698510 AND 1No. 16Kw PSU CABINET TO BE INSTALLED WITHIN CABIN 2

300mm WIDE CABLE TRAY

PROPOSED EE 1No. Mk2 BOB, 1No. ERS 4480 I.D. No. 527305 AND 1No. ERS 4419 I.D. No. 527322 MOUNTED ON NEW SUPPORT POLE FIXED TO GRILLAGE c/w 580mm ERS RAIL

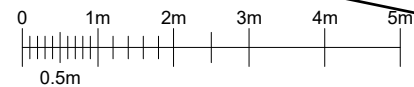
EE 1No. Mk1 BOB, 1No. 3262 RRU & 1No. 5258 RRU TO BE REMOVED

PROPOSED EE 1No. AIR 3278 ANTENNA TO BE INSTALLED ON EXISTING SUPPORT POLE AT 13.7m BEARING 122° E.T.N. I.D. No. 527300

H3G & EE 1No. 14-PORT ANTENNA AT 13.7m BEARING 122° ETN ID No. 537231

H3G & EE 1No. 2-PORT ANTENNA AT 12.0m BEARING 140° ETN ID No. 404541

FEINT DETAILS INDICATE LOCATIONS RESERVED FOR OTHER PROPOSALS WHICH MAY BE THE SUBJECT OF SEPARATE APPLICATIONS

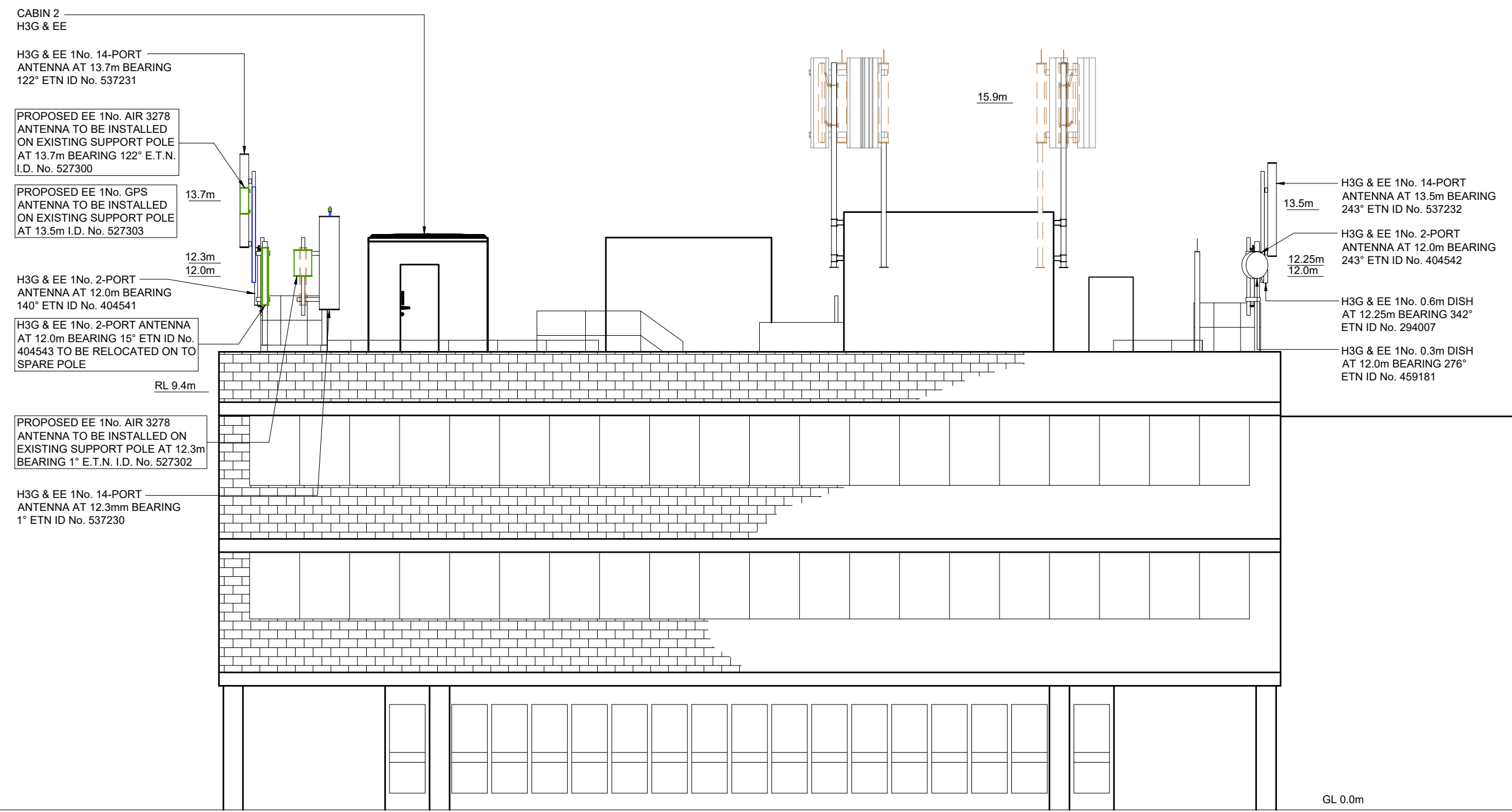




EE 3No. Mk1 BOBs, 3No. 3262 RRUs  
 & 3No. 5258 RRUs TO BE REMOVED

PROPOSED EE 3No. Mk2 BOBs, 3No. ERS 4480  
 I.D. No. 527304, 527305 & 527306, 3No. ERS 4419  
 I.D. No. 527320, 527321 & 527322 AND 1No. ERS  
 8863 MOUNTED ON NEW SUPPORT POLE  
 FIXED TO GRILLAGES c/w 580mm ERS RAILS

NOTES



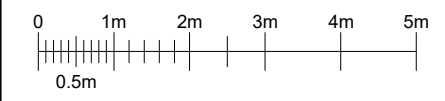
PROJECT No.		236531	
CELL No.		90846	
PROJ No			
PROJ No			
3	PROJ No 236531 PLANNING	31/08/21	WHP/VHF
2	PROJ No 173537 PLANNING ISSUE	07/06/16	HFC/HFC
1	PROJ No 173537 CONVERSION	24/05/16	PS PS
ISS	REVISION	DATE	DRN APP



SITE No **87235**  
 GREENFORD GREENFORD ROAD  
 ALLIED SANIF PLC  
 412 GREENFORD ROAD  
 EALING  
 GREATER LONDON 3  
 UB6 9AH  
 NGR TQ 14430 82170  
 OS GRID 514430 182170

TITLE ELEVATION PROPOSED H3G & EE LTD		
SCALE 1:100		
DRAWN	PS	23/05/16
APPROVED	WHP	31/08/21
DRG No.	Sheet 1 of 1	Rev
87235-02-150-MD003		3

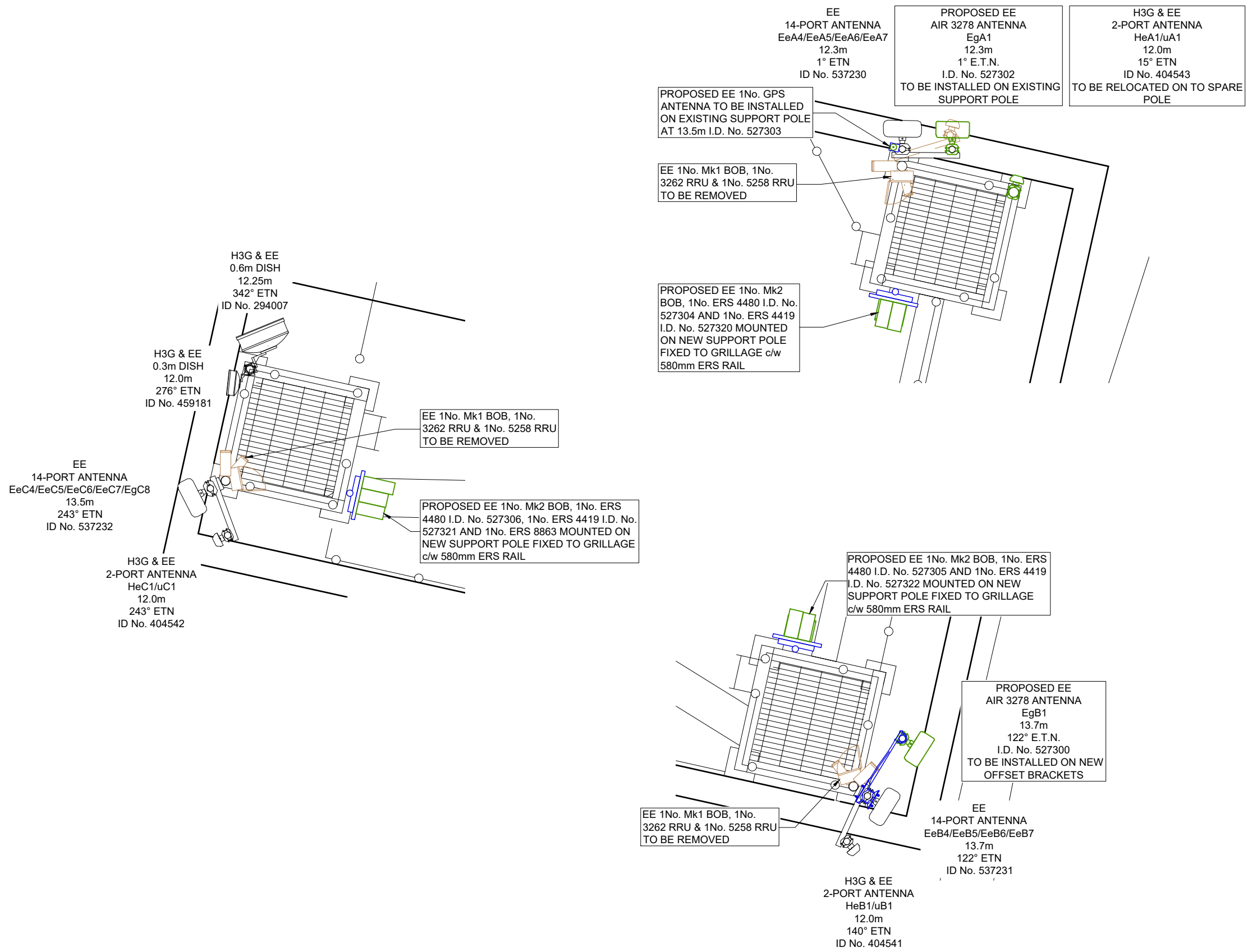
NORTH ELEVATION



FEINT DETAILS INDICATE LOCATIONS  
 RESERVED FOR OTHER PROPOSALS  
 WHICH MAY BE THE SUBJECT OF  
 SEPARATE APPLICATIONS



NOTES



PROJECT No.		236531	
CELL No.		90846	
PROJ No			
PROJ No			
PROJ No	236531		
3	PLANNING	31/08/21	WHP/VHF
PROJ No	173537		
2	PLANNING ISSUE	07/06/16	HFC/HFC
PROJ No	173537		
1	CONVERSION	24/05/16	PS PS
ISS	REVISION	DATE	DRN APP



SITE No **87235**  
 GREENFORD GREENFORD ROAD  
 ALLIED SANIF PLC  
 412 GREENFORD ROAD  
 EALING  
 GREATER LONDON 3  
 UB6 9AH

NGR TQ 14430 82170  
 OS GRID 514430 182170

TITLE  
 ANTENNA PLAN  
 PROPOSED  
 H3G & EE LTD

SCALE 1:50  
 DRAWN PS 23/05/16  
 APPROVED WHP 31/08/21

DRG No. Sheet 1 of 1 Rev  
**87235-02-151-MD003 3**

