



**Showtown**  
External signage - proposal

12th October 2021

*true***North**

PLACEMARQUE+

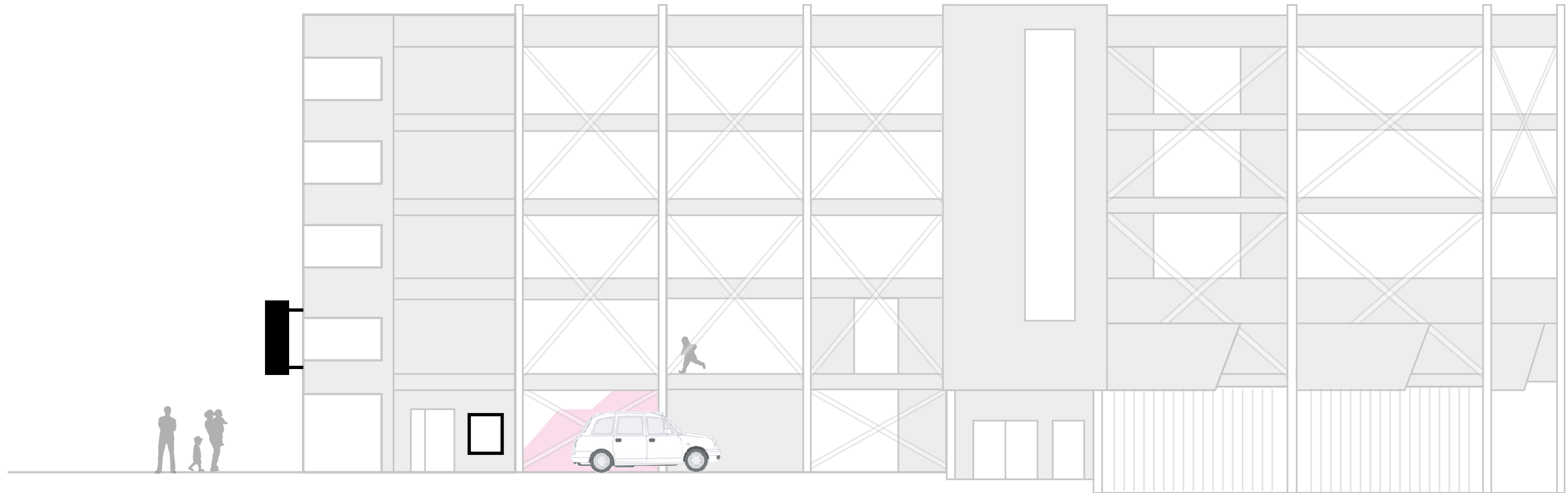


# External signage

---

- Increase visibility and awareness of the museum.
- To help create a welcoming experience for visitors and clearly communicate what to expect inside – the museum of fun and entertainment.
- Highlight the building entrance.

# External signage



Ex1 – Gateway sign

Ex2 – Display Case

Ex3 – High Level Side Fascia

# Ex1 - Gateway sign



## PLACEMARQUE+

### Design Intent Drawing

Project: Showtown Museum, Blackpool  
Sign Type: EX 1 - Main Entrance Sign

Scale 1:10 @ A2

PM261/2019/008 D3

**LIGHTBOX**  
Internally illuminated  
light box. Sign to have  
graphics on x3 sides  
Vinyl detail to face



FRONT VIEW



SIDE VIEW

THE MUSEUM...  
Painted and printed graphics



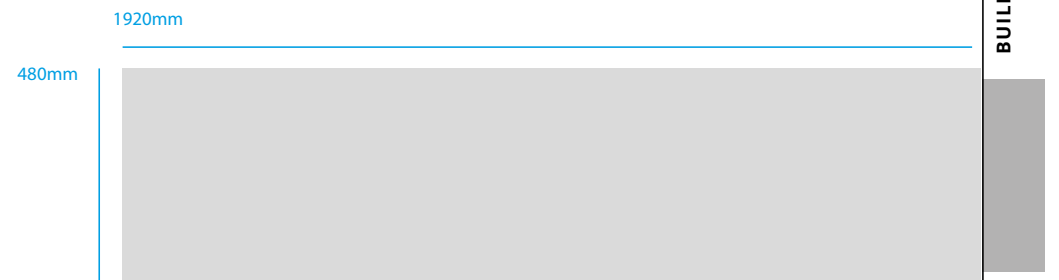
3D VIEW

### SIGN STRUCTURE

Sign to project from building above revolving doors, sign to be supported by hidden internal frame and wall bracket to fix back to building structure.

Final sizes of cantilevered support structure to be confirmed by manufacturer to ensure buildability and durability.

- General Notes**
- This drawing is provided to exhibit design arrangement only
  - Shop drawings supplied by the manufacturer and approved by Wayfinding Consultant and Client are to provide the final specification document for this sign. Shop drawings to indicate fabrication and fastening methods approved by a qualified engineer. Alternative construction that does not change the intended appearance of sign will be considered but will require full client approval
  - All sign content shown is for visualisation purposes only. All final content will be unique to it's location, approved artwork will be supplied to manufacturer by Wayfinding Consultant
  - All dimensions are in millimetres - do not scale from this drawing
  - Manufacturer to ensure stability and build ability aspects suitable to local ground conditions and wall structures



TOP VIEW

BUILDING WALL

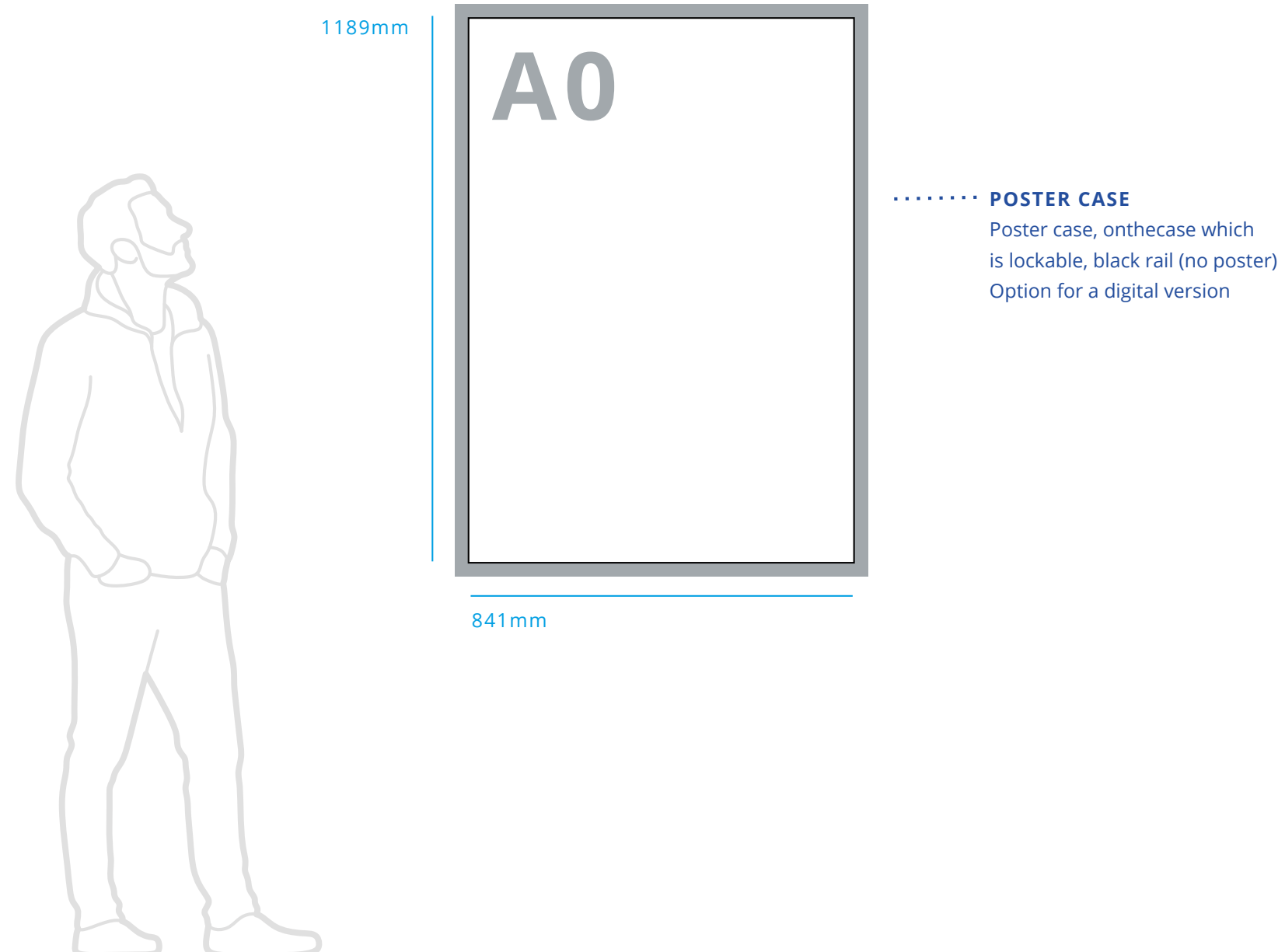


### BRACKET

Sign frame to bolt back to building structure to provide cantilever support to sign.

Final size of brackets to be confirmed by manufacturer.

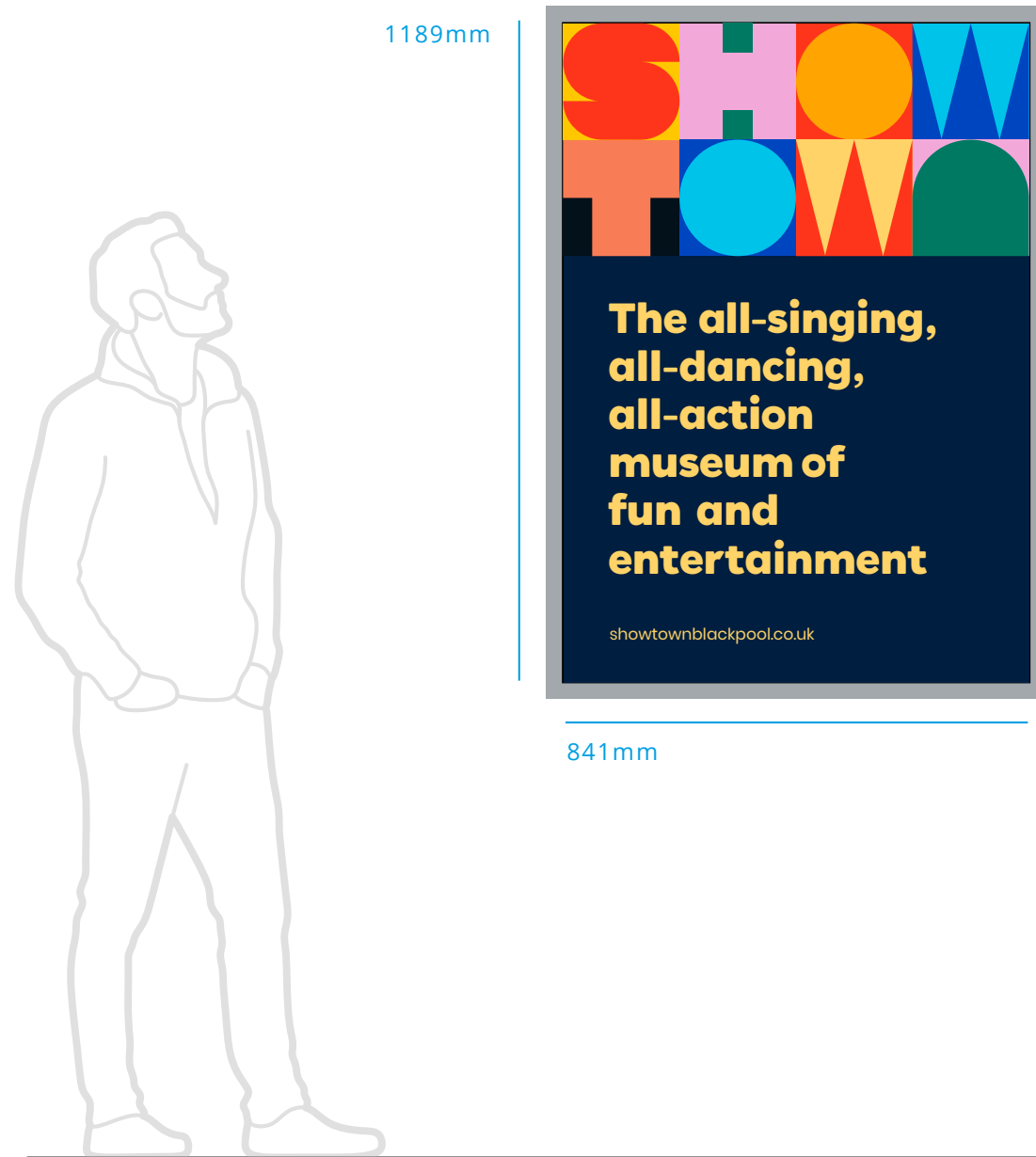
## Ex2 - Display case



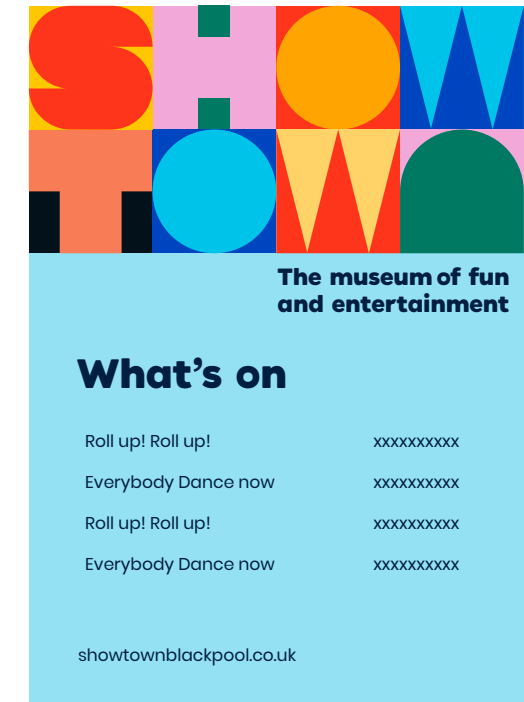
### General Notes

- This drawing is provided to exhibit design arrangement only
- Shop drawings supplied by the manufacturer and approved by Wayfinding Consultant and Client are to provide the final specification document for this sign. Shop drawings to indicate fabrication and fastening methods approved by a qualified engineer. Alternative construction that does not change the intended appearance of sign will be considered but will require full client approval
- All sign content shown is for visualisation purposes only. All final content will be unique to it's location, approved artwork will be supplied to manufacturer by Wayfinding Consultant
- All dimensions are in millimetres - do not scale from this drawing
- Manufacturer to ensure stability and build ability aspects suitable to local ground conditions and wall structures

# Ex2 - Display case, possible content



..... **POSTER CASE**  
Poster case, onthecase which is lockable, black rail (no poster)  
Option for a digital version



# Ex3 - High Level Side Fascia



## PLACEMARQUE+

Design Intent Drawing

Project: Showtown Museum, Blackpool  
Sign Type: EX 3 - High Level Side Fascia

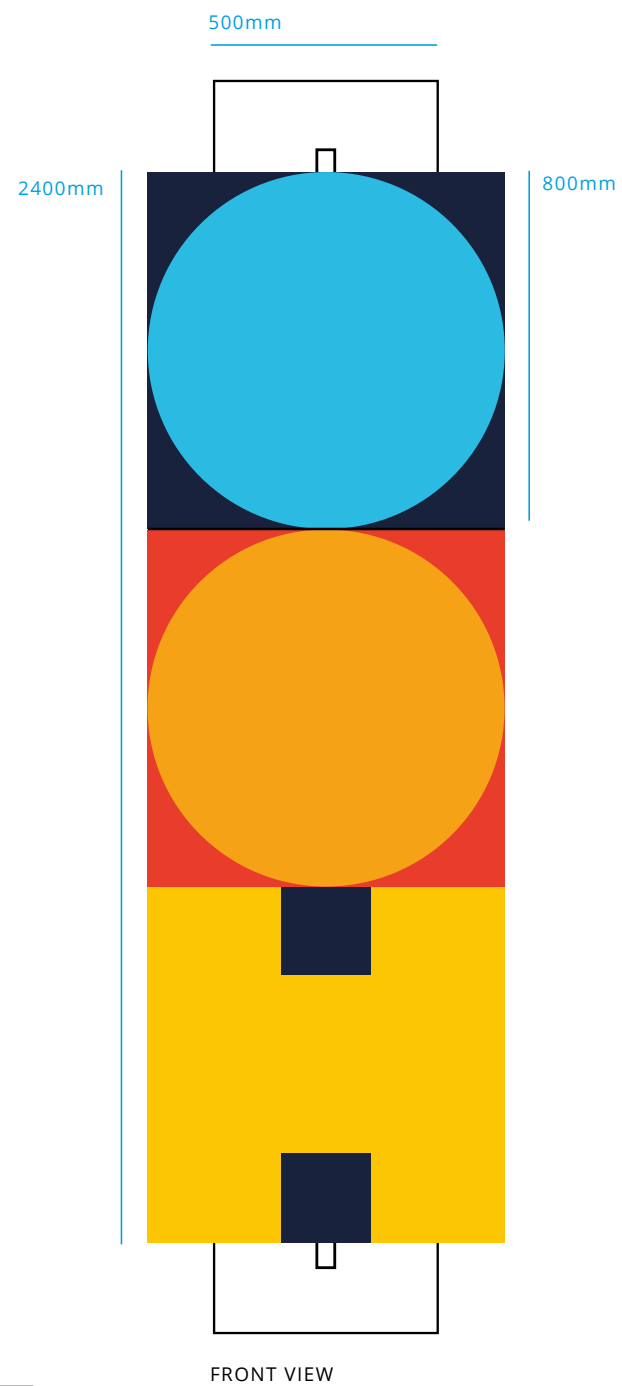
Scale 1:10 @ A2

PM261/2019/010 D3

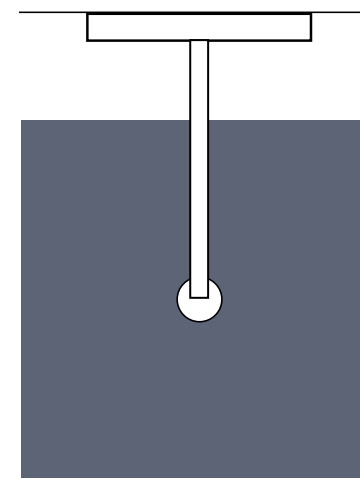
### NOTE

Final sizes of support fixings to be confirmed by manufacturer to ensure buildability and durability

- General Notes**
- This drawing is provided to exhibit design arrangement only
  - Shop drawings supplied by the manufacturer and approved by Wayfinding Consultant and Client are to provide the final specification document for this sign. Shop drawings to indicate fabrication and fastening methods approved by a qualified engineer. Alternative construction that does not change the intended appearance of sign will be considered but will require full client approval
  - All sign content shown is for visualisation purposes only. All final content will be unique to it's location, approved artwork will be supplied to manufacturer by Wayfinding Consultant
  - All dimensions are in millimetres - do not scale from this drawing
  - Manufacturer to ensure stability and build ability aspects suitable to local ground conditions and wall structures



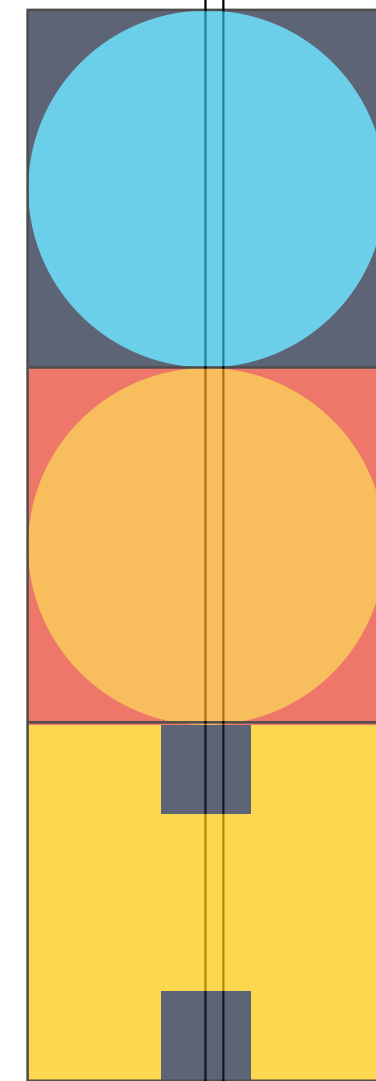
TOP VIEW



### STACKED BOXES

Aluminium formed stacked boxes / panels with painted graphics.  
x3 cubes to rotate as a set

800mm



SIDE VIEW

BUILDING WALL

### BRACKET

C frame to project to allow for a structure  
Central rod to run thr  
x3 cubes to connect s

**Thank you**