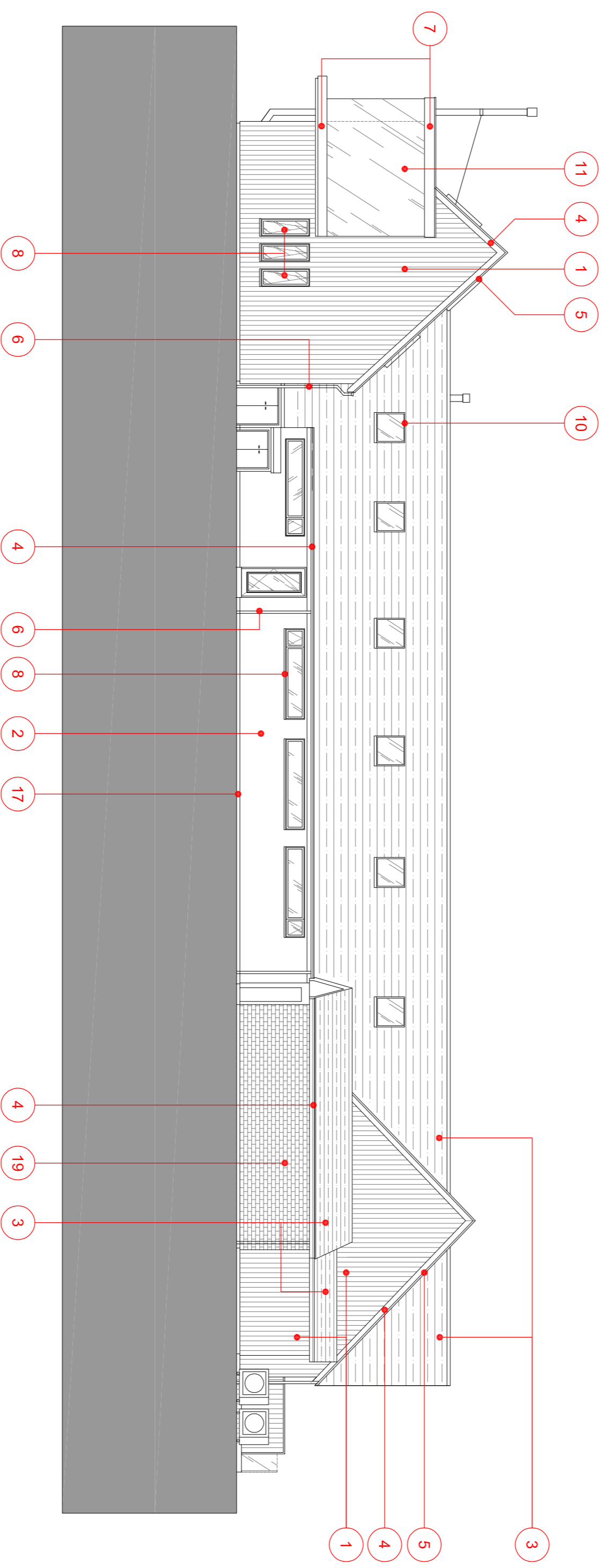
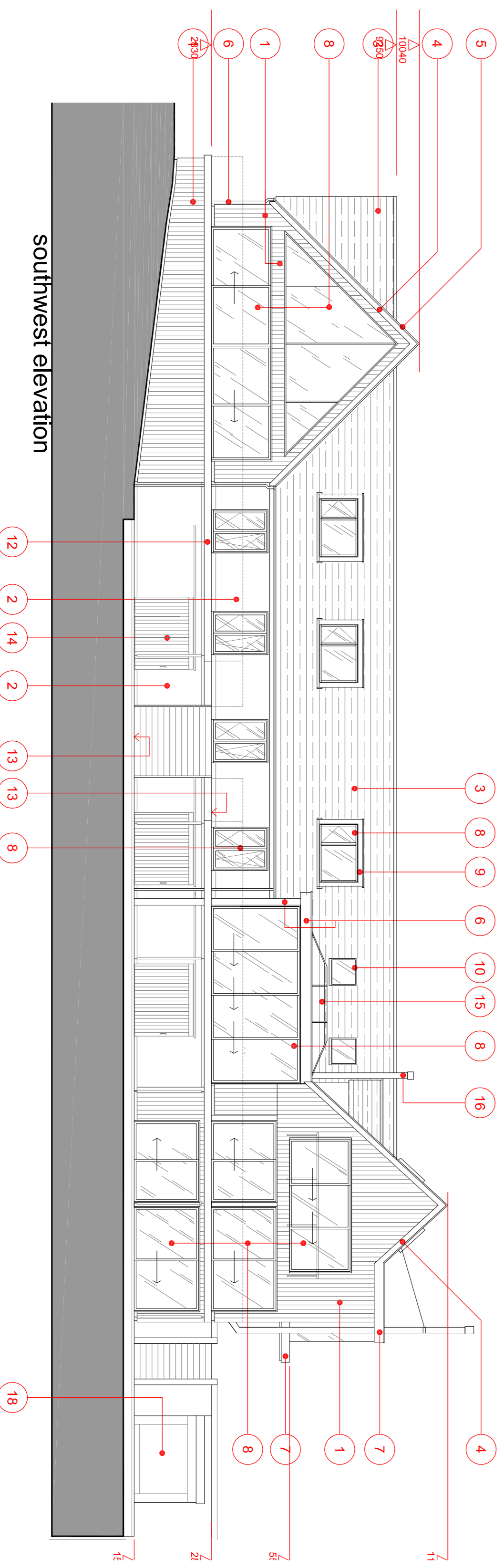


## EXTERNAL FINISHES

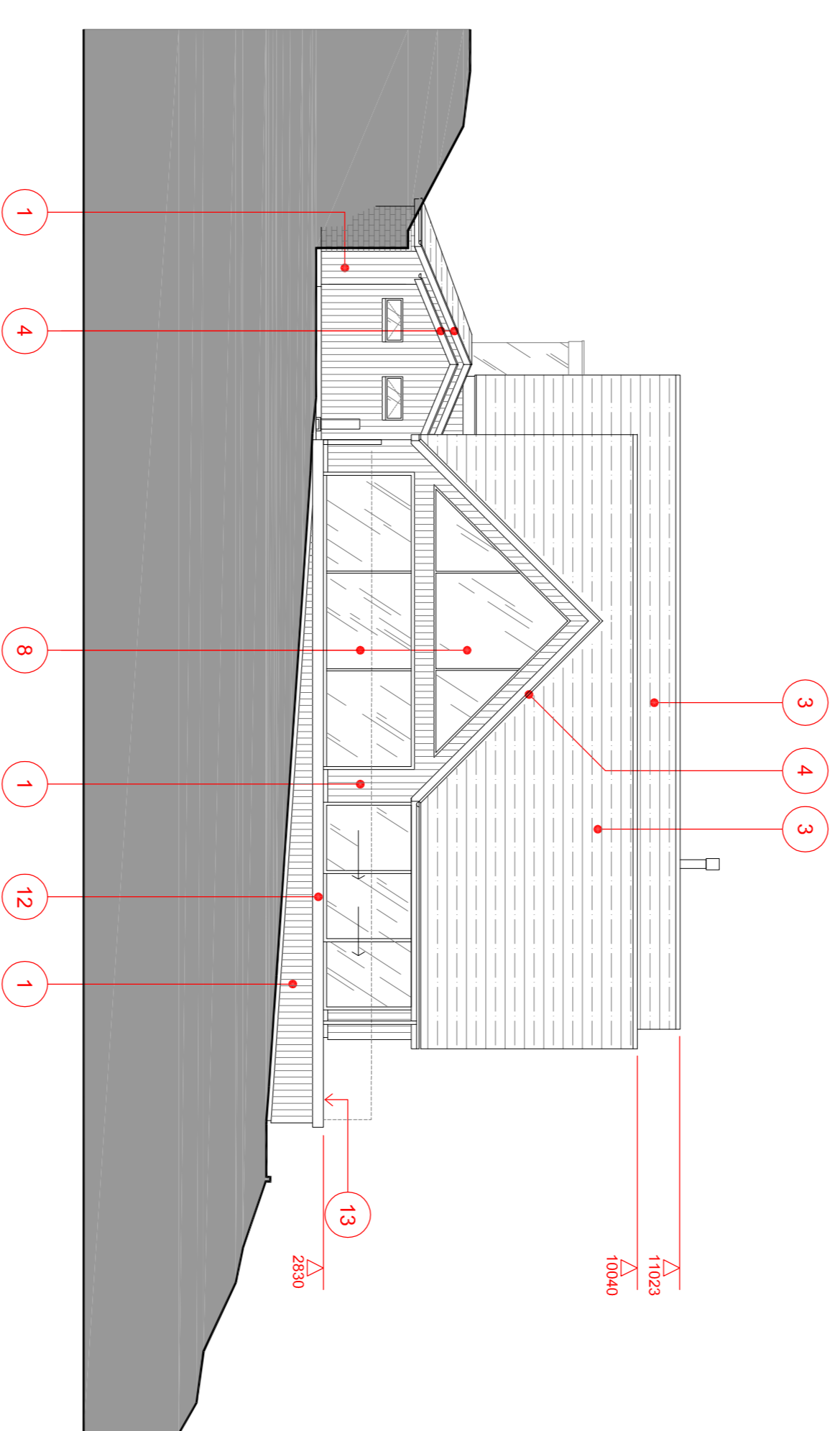
- 1 WALL CLADDING - VERTICAL WESTERN RED CEDAR - SILVA MICROLINE CLADDING - 144MM BOARD WIDTH - FINISH SAWSIN SPF - NATURAL'S FINISH REF: ESPRESSO 17
- 2 WALL RENDER - K-REND THROUGH COLOUR - SCRAPPED TEXTURE COLOUR REF: IVORY
- 3 SPANISH SLATE ROOF WITH MARLEY DRY RIDGE FINISH DARK GREY & LEAD VALLEYS
- 4 FASCIA BARGE SOFFIT BOARD - ALUTEC OR APPROVED EQUIVALENT - RAL 9016 ANTHRACITE GREY
- 5 DRY VERGE - CONTINUOUS SLATE DRY VERGE CAPPING - FINISH BLACK
- 6 RAINWATER GOODS - ALUTEC OR APPROVED EQUIVALENT - HALF ROUND GUTTERS & ROUND DOWN PIPES - FINISH ANTHRACITE GREY MATT FINISH RAL 9016
- 7 FLAT ROOF FASCIA & SOFFIT - ALUTEC OR APPROVED EQUIVALENT - RAL 9016 ANTHRACITE GREY MATT FINISH
- 8 WINDOWS & DOORS / SLIDING DOORS - ALUMINIUM FRAME - DOUBLE GLAZING CW ANTISUN LOW REFLECTIVE GREY COATING - FRAME FINISH RAL 9016 ANTHRACITE GREY MATT FINISH - APPLIES TO ALL WINDOWS & DOORS UNLESS SPECIFIED OTHERWISE
- 9 DORMIER CLADDING - COLOUR COAT URBAN, RAISED SEAM METAL CLADDING, COLOUR REF RAL 9016 ANTHRACITE GREY
- 10 ROOF WINDOWS - ROOFLIGHT Co. NEO RANGE - REF NEO-S9 FLUSH ROOF FIT / RECESSED FRAME - FINISH BLACK
- 11 CORNER ORIEL WINDOW - FRAMELESS GLAZING CW ANTISUN LOW REFLECTIVE GREY COATING
- 12 TERRACE FASCIA - ALUTEC OR ALUMINIUM FRAME FINISH RAL 9016 ANTHRACITE GREY MATT FINISH
- 13 TERRACE FLOOR - LARGE FORMAT PORCELAIN TILE - MANDARIN STONE CONCRETE GREY
- 14 SLIDING DOORS - WRC CLAD - SPEC AS WALL CLADDING
- 15 ROOF LANTERN - ALUMINIUM FRAME FINISH RAL 9016 ANTHRACITE GREY CW ANTISUN LOW REFLECTIVE GREY COATING
- 16 STOVE FLUES - TWIN WALL FLUE - STAINLESS STEEL
- 17 RED BRICK PLINTH TO MATCH EXISTING
- 18 EXISTING WOOD STORE SHED - RECLAD IN WRC TO MATCH HOUSE
- 19 GARAGE - EXISTING MATT RED BRICKWORK
- 20 GARAGE DOOR - TYPE T.B.C. - FINISH RAL 9016 ANTHRACITE GREY



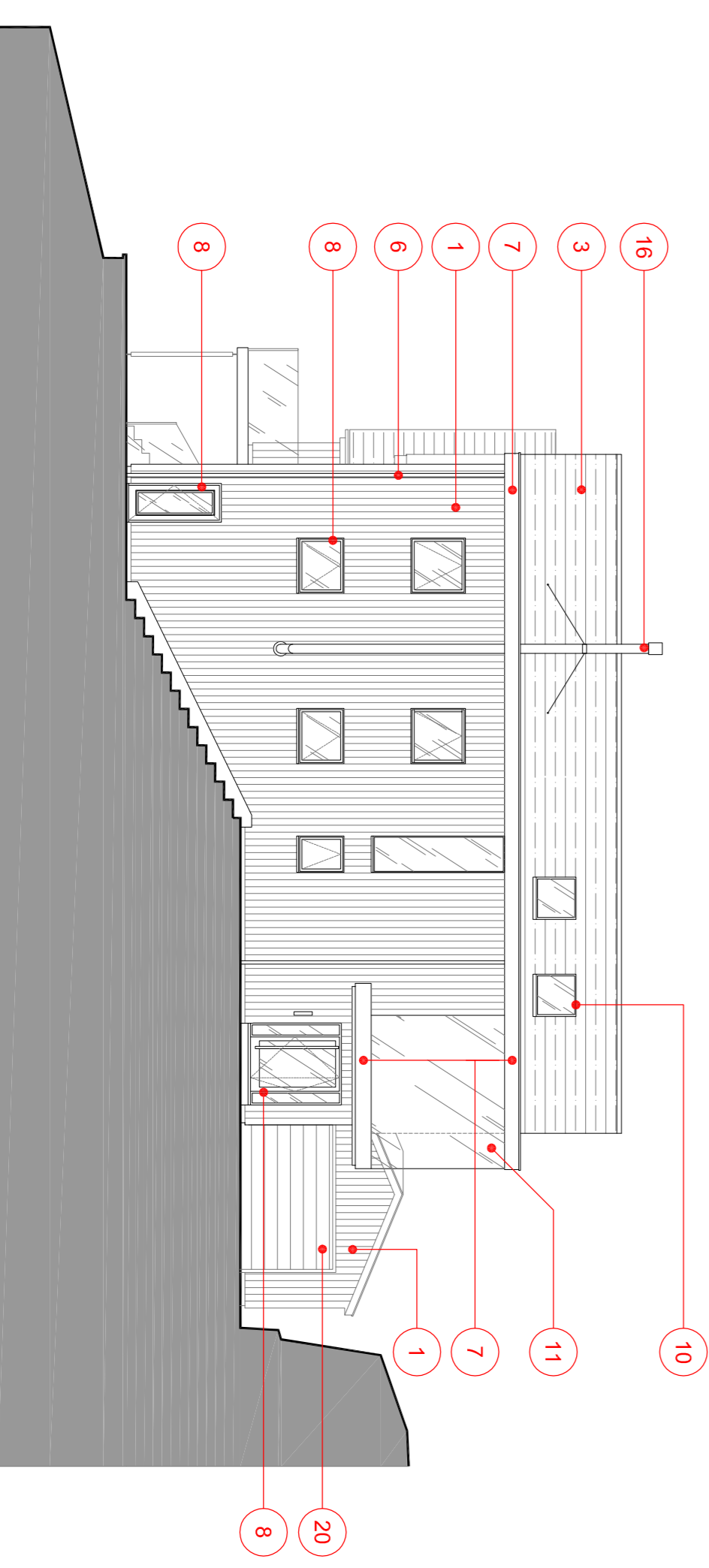
northeast elevation



southwest elevation



northwest elevation



southeast elevation

NOTES:  
ALL DIMENSIONS IN MILLIMETRES.  
DO NOT SCALE FROM DRAWING

REVISIONS DATE BY



Manley Design & Construction Ltd  
The Old Farmhouse  
Middle Westhope, Craven Arms  
Shropshire  
SY7 9JL

- Preliminary
- Tender
- Contract
- As Built

PROJECT TITLE  
Mr & Mrs Briggs -  
Kiln House  
Knowledge  
Ludlow -  
Shropshire  
SY8 3AJ

DRAWING TITLE  
**Proposed External Finishes**

SCALE DRAWN DATE  
1:125@A1 mja 13.09.21  
DRAWING NUMBER REV.NO.  
**KH21 GA05 NMA**