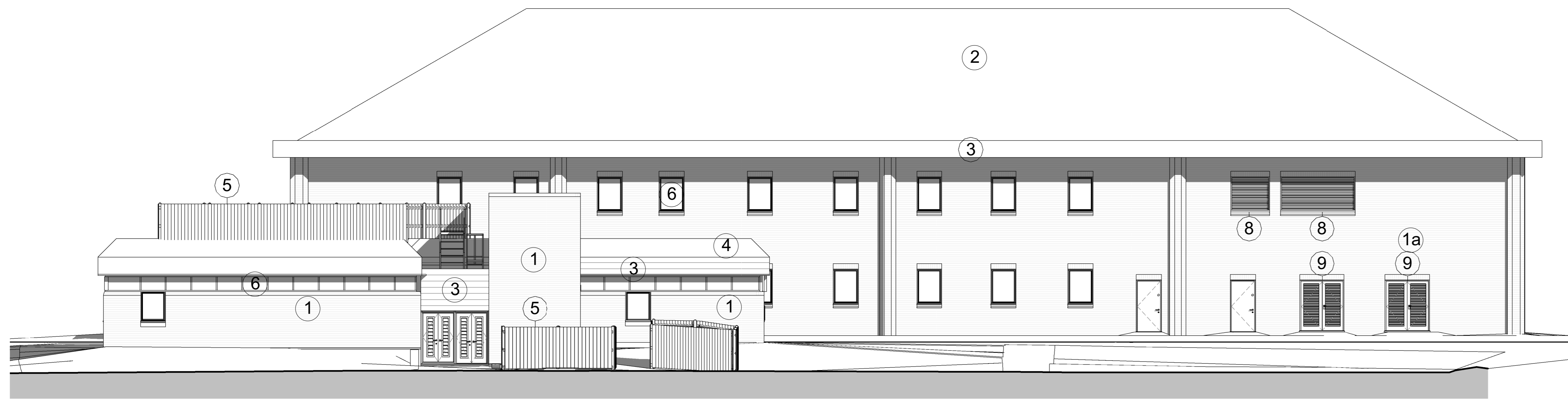
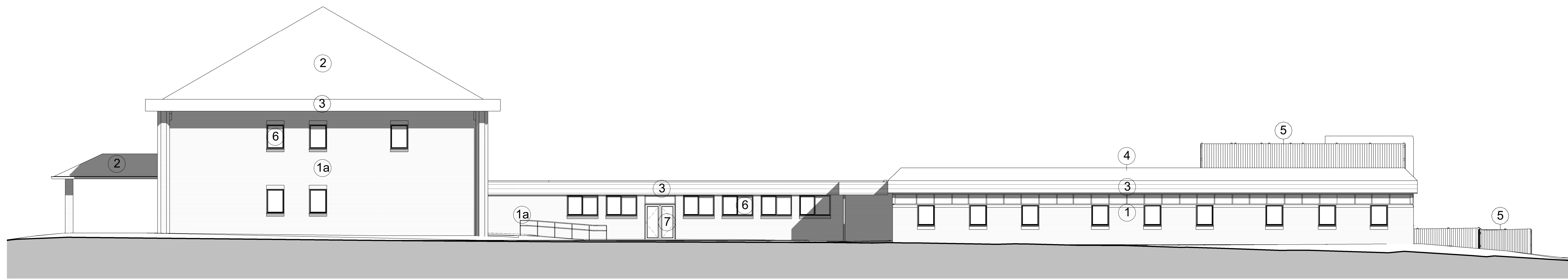


Materials

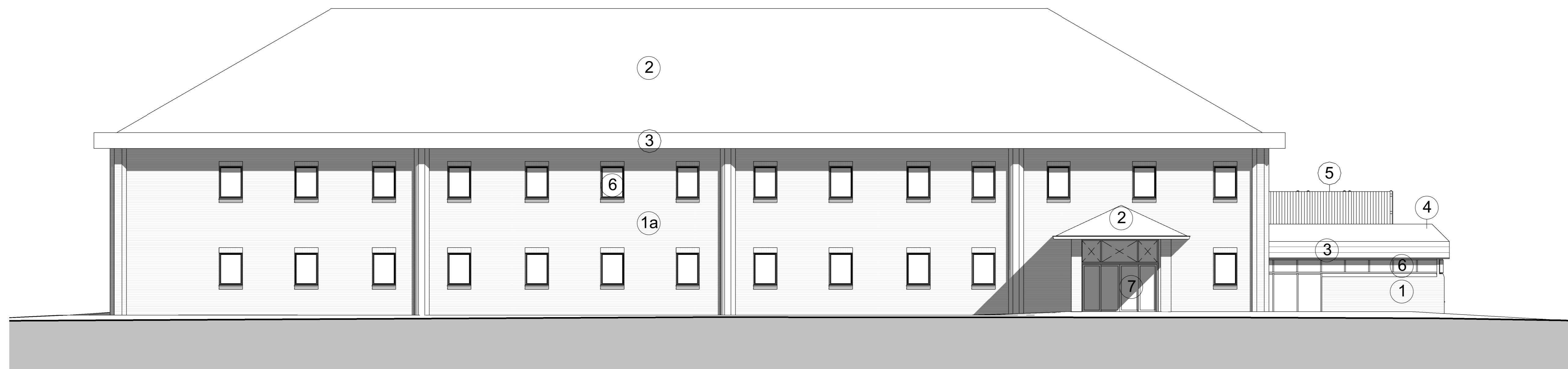
- ① External Facing Brickwork (Brown)
- ② External Facing Brickwork (Buff)
- ③ Standing Seam Roof (Brown)
- ④ Profiled Metal Fascia (Dark Brown)
- ⑤ Profiled Metal Roof (Brown)
- ⑥ Fencing
- ⑦ Glazed Windows, Aluminium Frame (Dark Brown)
- ⑧ Glazed Doors, Aluminium Frame (Dark Brown)
- ⑨ Metal Louvers
- ⑩ Metal Loured Doors



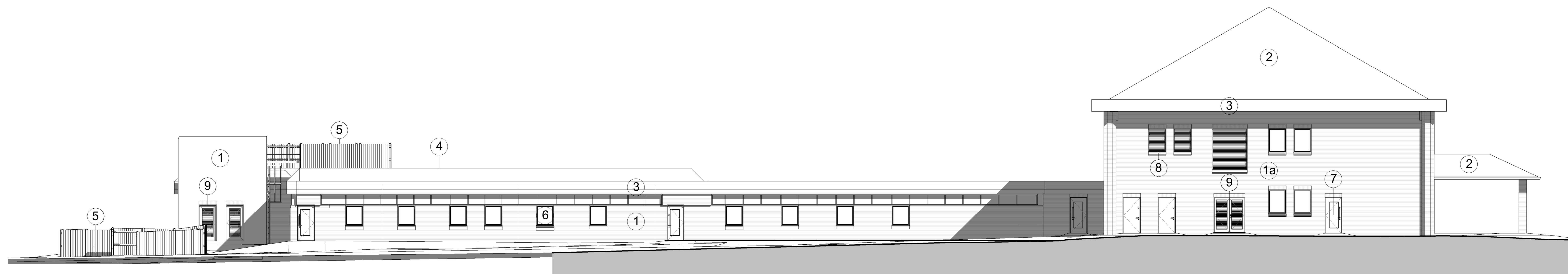
NORTH ELEVATION



EAST ELEVATION



SOUTH ELEVATION



WEST ELEVATION