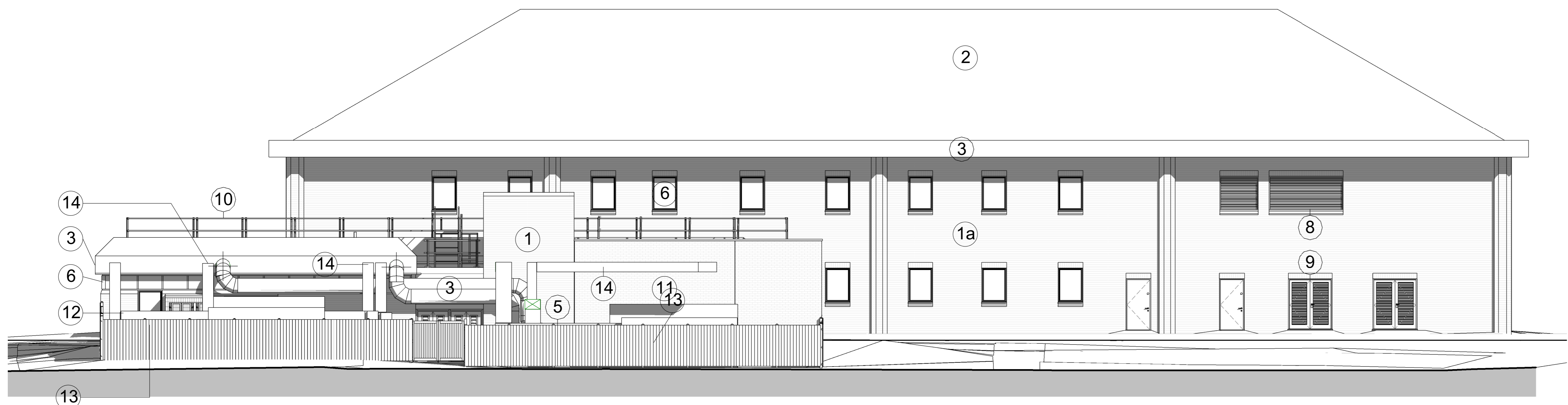
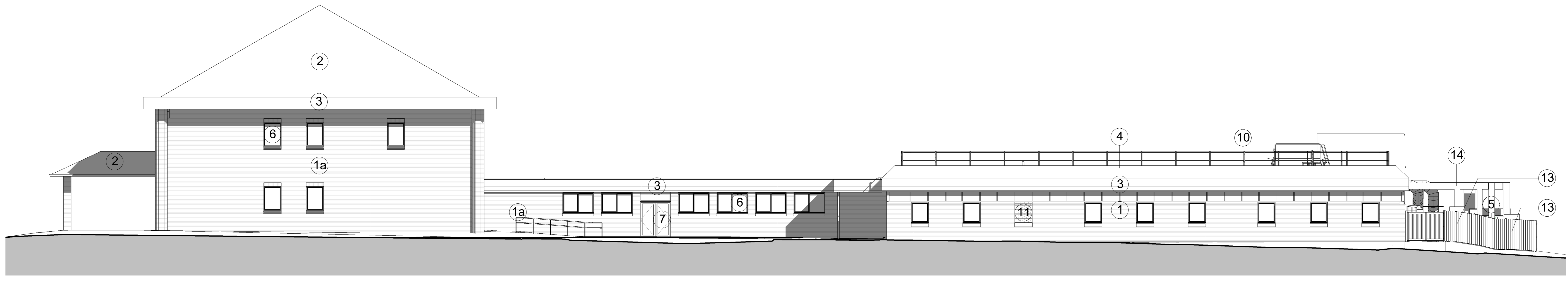


Materials

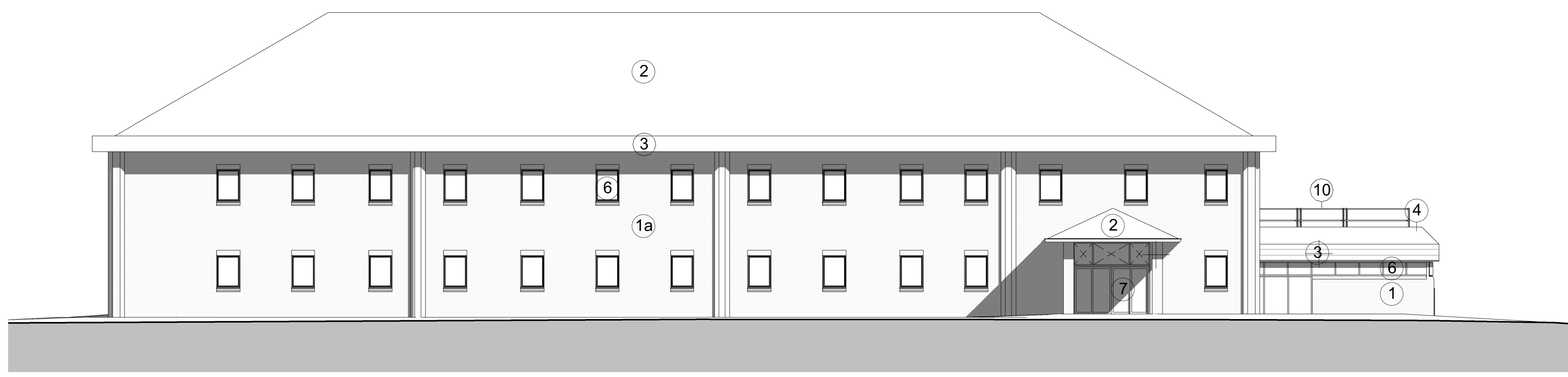
- ① External Facing Brickwork (Brown)
- ② External Facing Brickwork (Buff)
- ③ Standing Seam Roof (Brown)
- ④ Profiled Metal Roof (Dark Brown)
- ⑤ Profiled Metal Roof (Brown)
- ⑥ Timber Fencing
- ⑦ Glazed Windows, Aluminium Frame (Dark Brown)
- ⑧ Glazed Doors, Aluminium Frame (Dark Brown)
- ⑨ Metal Louvers
- ⑩ Metal Loured Doors
- ⑪ Metal Safety Rail
- ⑫ New External Facing Brickwork (Brown)
- ⑬ Steel Mesh Gas Cylinder Enclosure
- ⑭ Air Handling Units
- ⑮ Insulated ventilation ducts



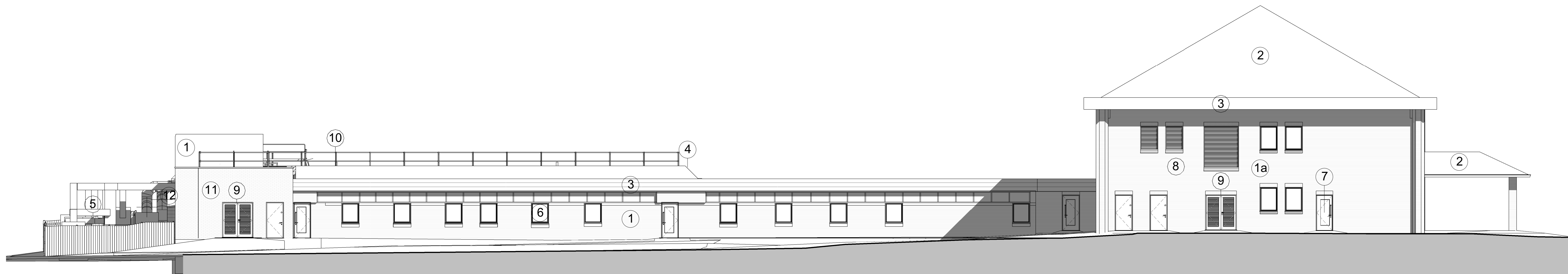
NORTH ELEVATION



EAST ELEVATION



SOUTH ELEVATION



WEST ELEVATION

P01 PLANNING ISSUE 01.10.2021 RMW
 No. Revision Date
 Job
 DENTIST LABS B944 + B944A
 MSET 14-8002
 Drawing
 EXTERNAL ELEVATIONS AS PROPOSED
 Client
 KIER REGIONAL BUILDING

FRANK
SHAW
ASSOCIATES
LIMITED
ARCHITECTS

Jubilee House Mill Lane Sawston Cambridge CB22 3HZ
 Tel 01223 838100 www.frankshawassociates.co.uk
 Email: info@fsa.co.uk
 As indicated@AO RMW
 Job Number Date
 20520 29.09.2021
 Drawing Number Rev
 20520-FSA-ZZ-ZZ-DR-A-0007 P01