

**DO NOT SCALE.  
IF IN DOUBT ASK.**

**SPECIFICATION - MODULAR SPACE SALE**

Building Span: 2x2 No. 12.200m Bays  
 Design: Two Storey Modular Space Sale  
 Floor Loading: 3.0kN/m<sup>2</sup>  
 Structural Ceiling Height: 2700mm  
 Standard Suspended Ceiling Height: 2400mm  
 Roof Pitch: MONO PITCH

**Roof Construction:**  
 FAR GALE 32/1000 Single skin roof profile sheet  
 Colour = Goosewing Grey (BS10A05).

**Floor Construction:**  
 18mm flooring grade plywood over floor joists.

**Rainwater Goods:**  
 External squareline gutter system - Colour: BLACK

**External Wall Construction:**  
 9mm Multipro bonded to plastisol fixed to 35mm x 140mm timber studs with 400mm centres 140mm insulation.  
 Internally lined with 15mm Megadeco.  
 Plasterboard Colour: White  
 Intumescent fire seal top & bottom perimeter

**Exterior Finish:**  
 Main body Colour: Goosewing Grey (BS 10A05)

**External Trim:**  
 Fascia Trim - Colour: Goosewing Grey (BS 10A05)  
 Column Trim - Colour: Goosewing Grey (BS 10A05)  
 Front Wall Plinth (P Flashing) - Colour: Goosewing Grey (BS 10A05)

**Windows:** - See Window Spec for details  
 Windows to be as standard PVC-U, 900 x 1200 outward opening / 900 x 2200 fixed  
 PVC-U White internal Window Liners

**External Doors:**  
 Fire Rated Entrance Doors -1060mm x 1981mm  
 Aperture - 1138mm x 2055mm  
 Colour: Goosewing Grey (BS 10A05)  
 Lever Handle and push pad  
 60 Minutes fire rated  
 2xG/GG

**Skirting:**  
 75mm grey, sit on two part plastic top and bottom skirting

**Ceiling Finish:**  
 15mm Megadeco Plain Plasterboard ceiling sealed to perimeter and joints with intumescent sealant.  
 Acoustic suspended ceiling throughout Colour: White

**Floor Covering:**  
 Polysafe Standard 2.0mm sheet vinyl Safety Flooring - Colour: ASH GREY (4540)  
 All joints welded using weldrod - Colour: 2090  
 Rolls 843mm cut back from bay edge each side  
 1686mm infill on site

**Ironmongery:**  
 Satin Anodised Aluminium (SAA) All Locks suited.

**Internal Partitioning:** -  
 45DB-30FR Partitioning.  
 70x30mm galvanised steel studding lined each side with single layer of 15mm v/f Megadeco - Colour: White.  
 Insulated with: 25mm Glasswool Partition Roll (1200mm) INSR025S.

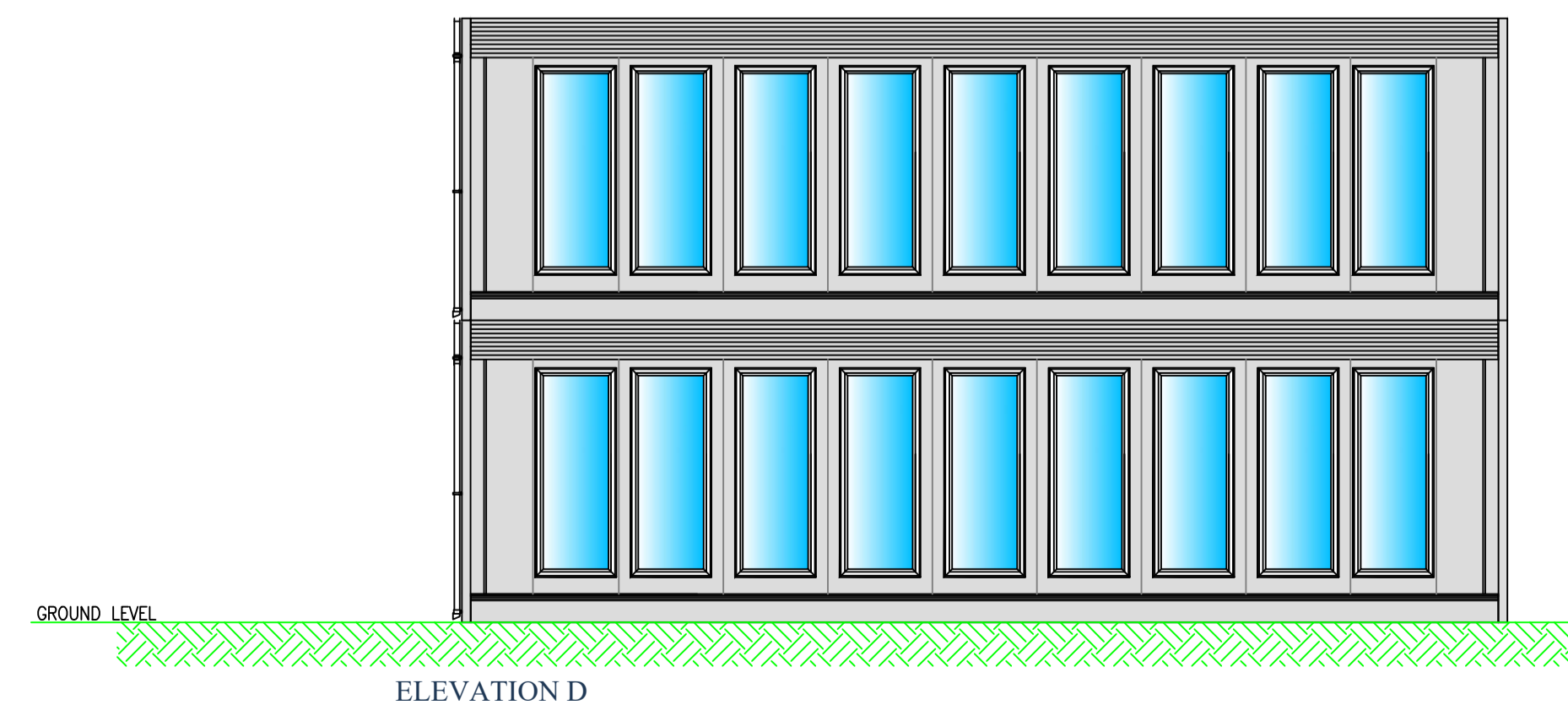
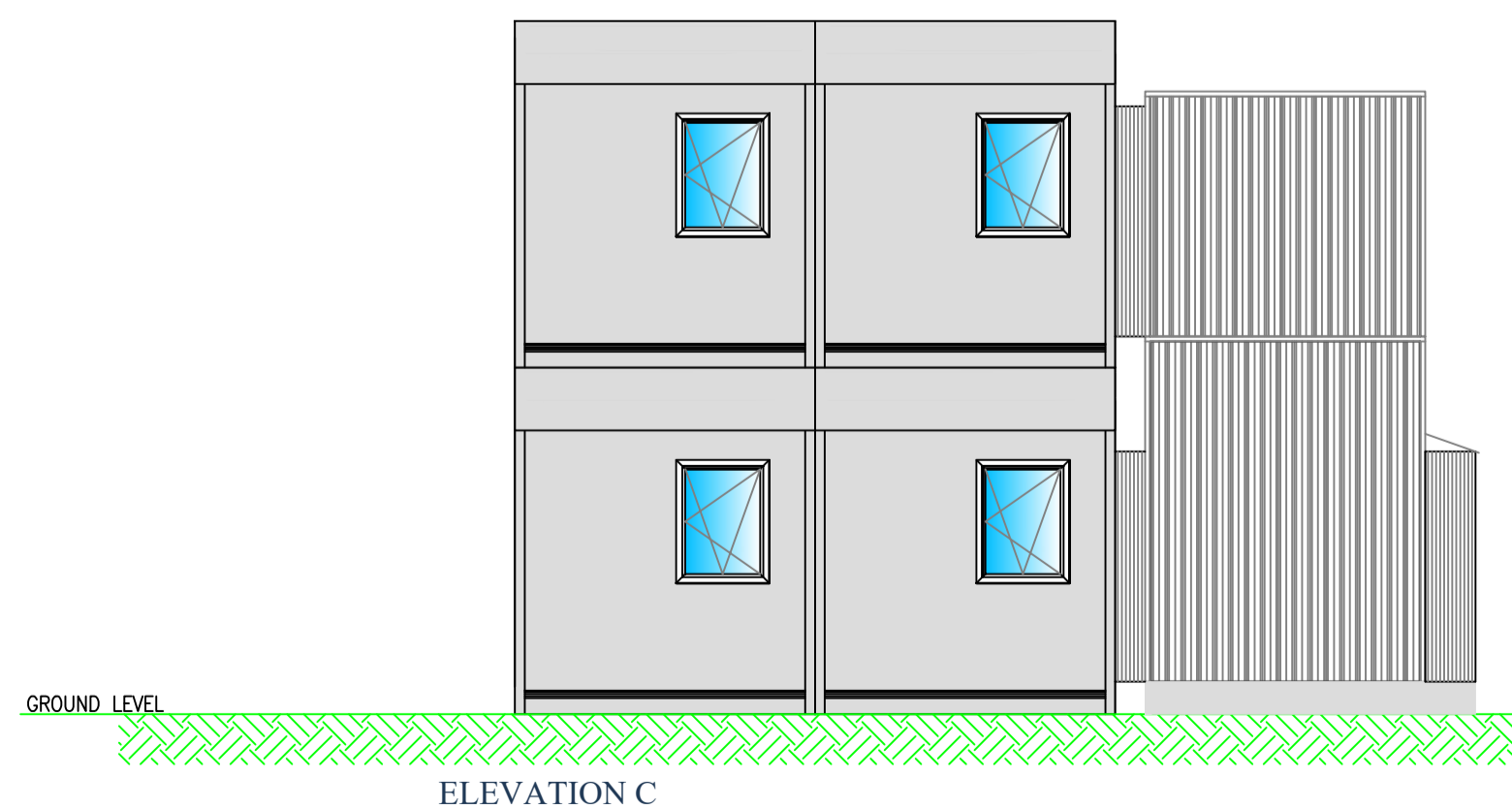
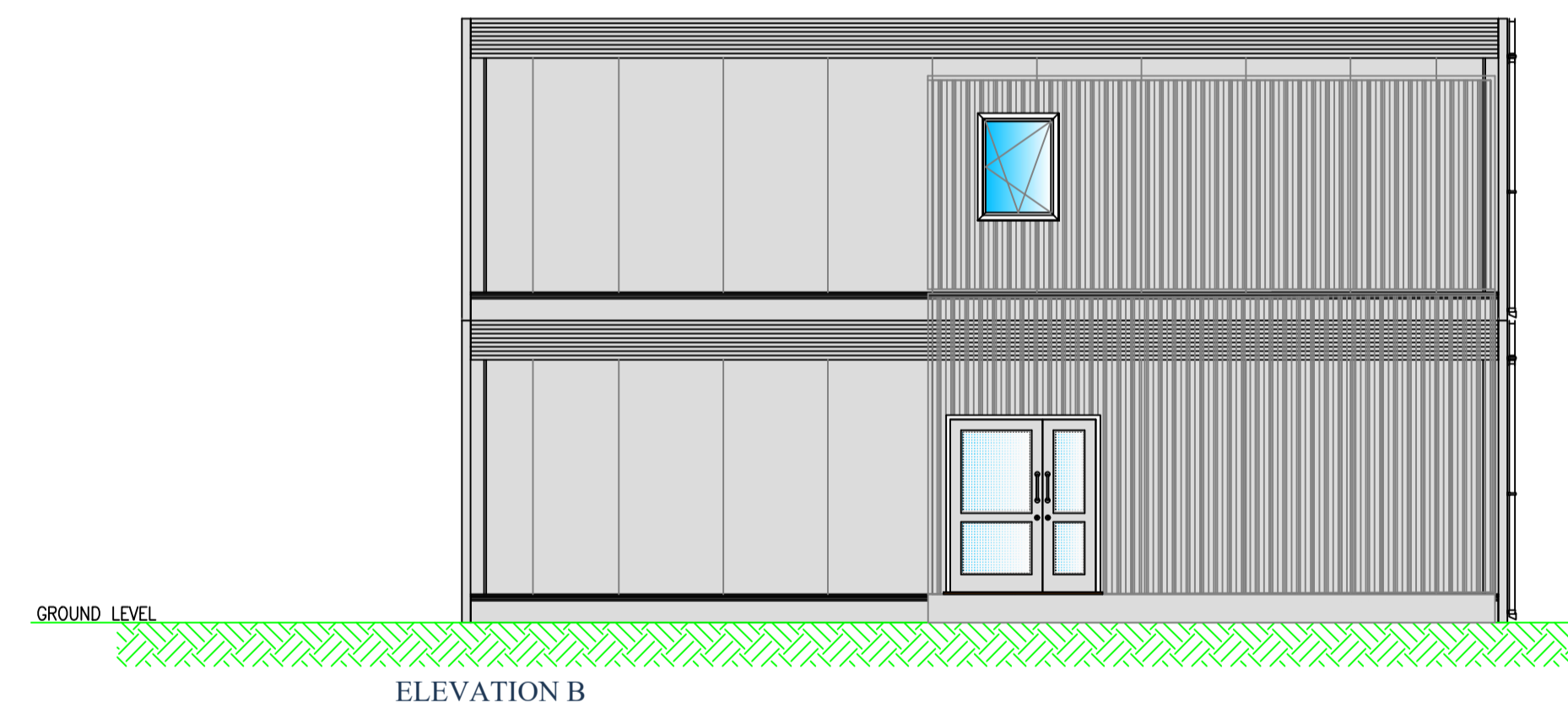
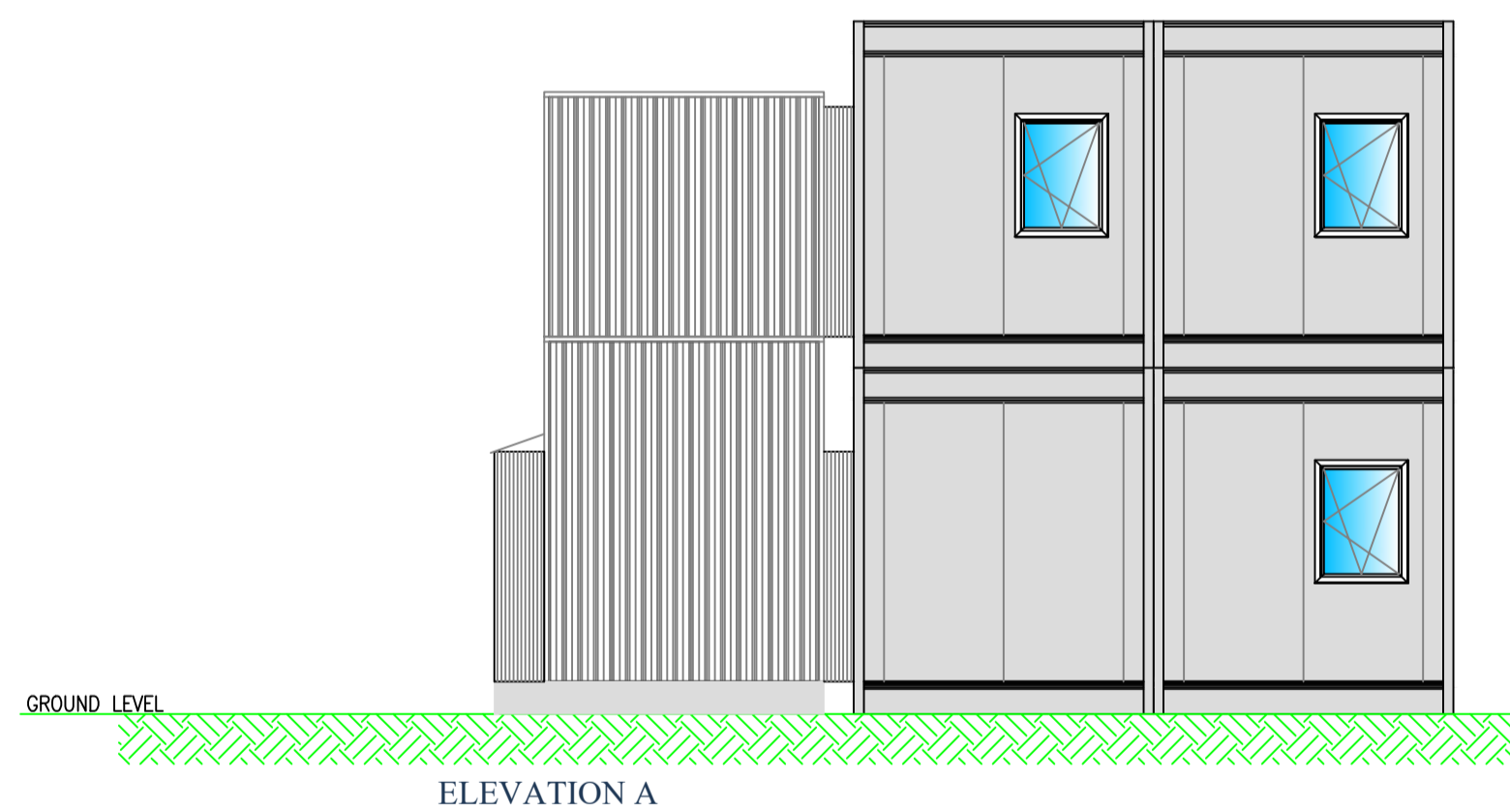
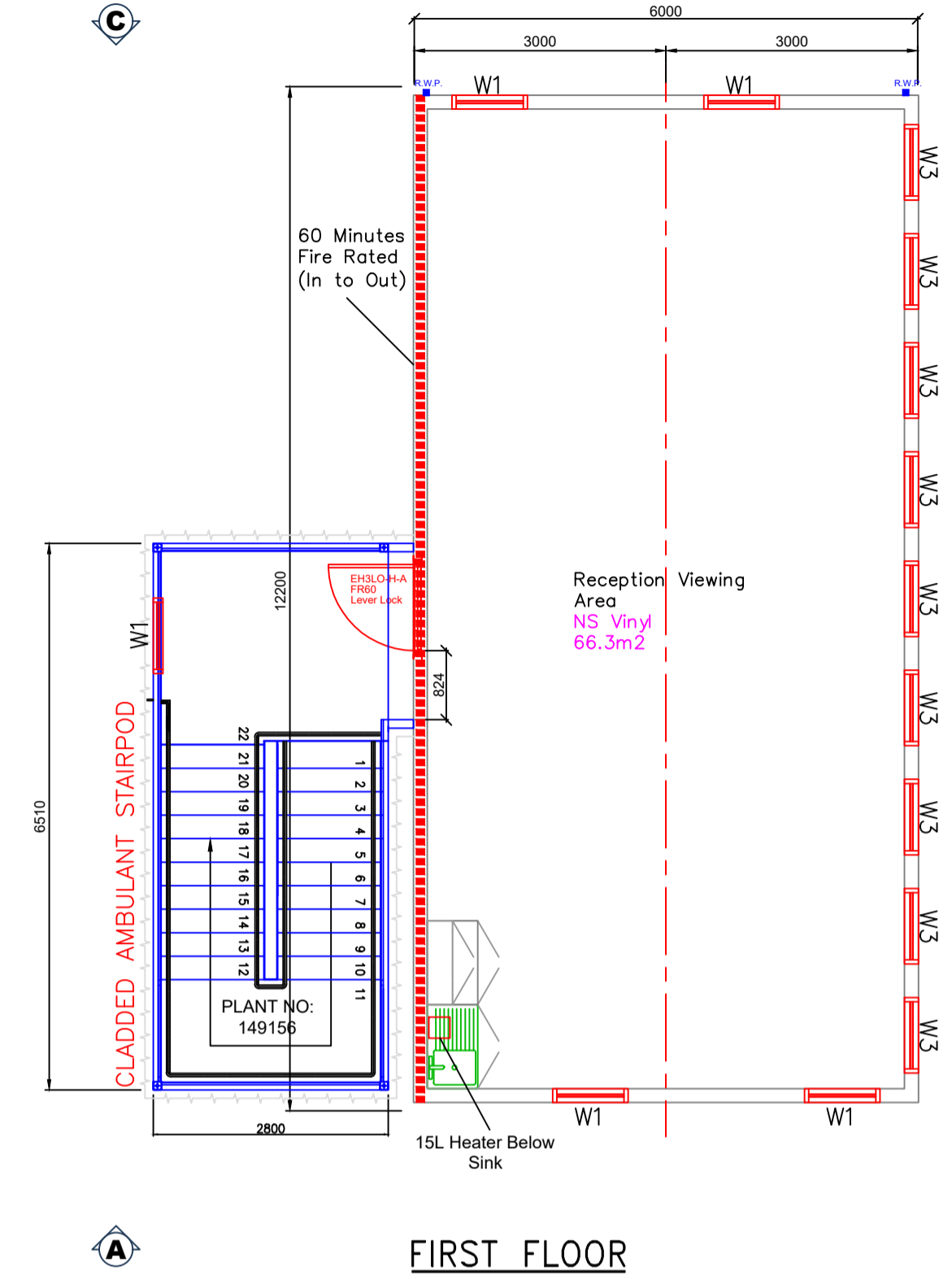
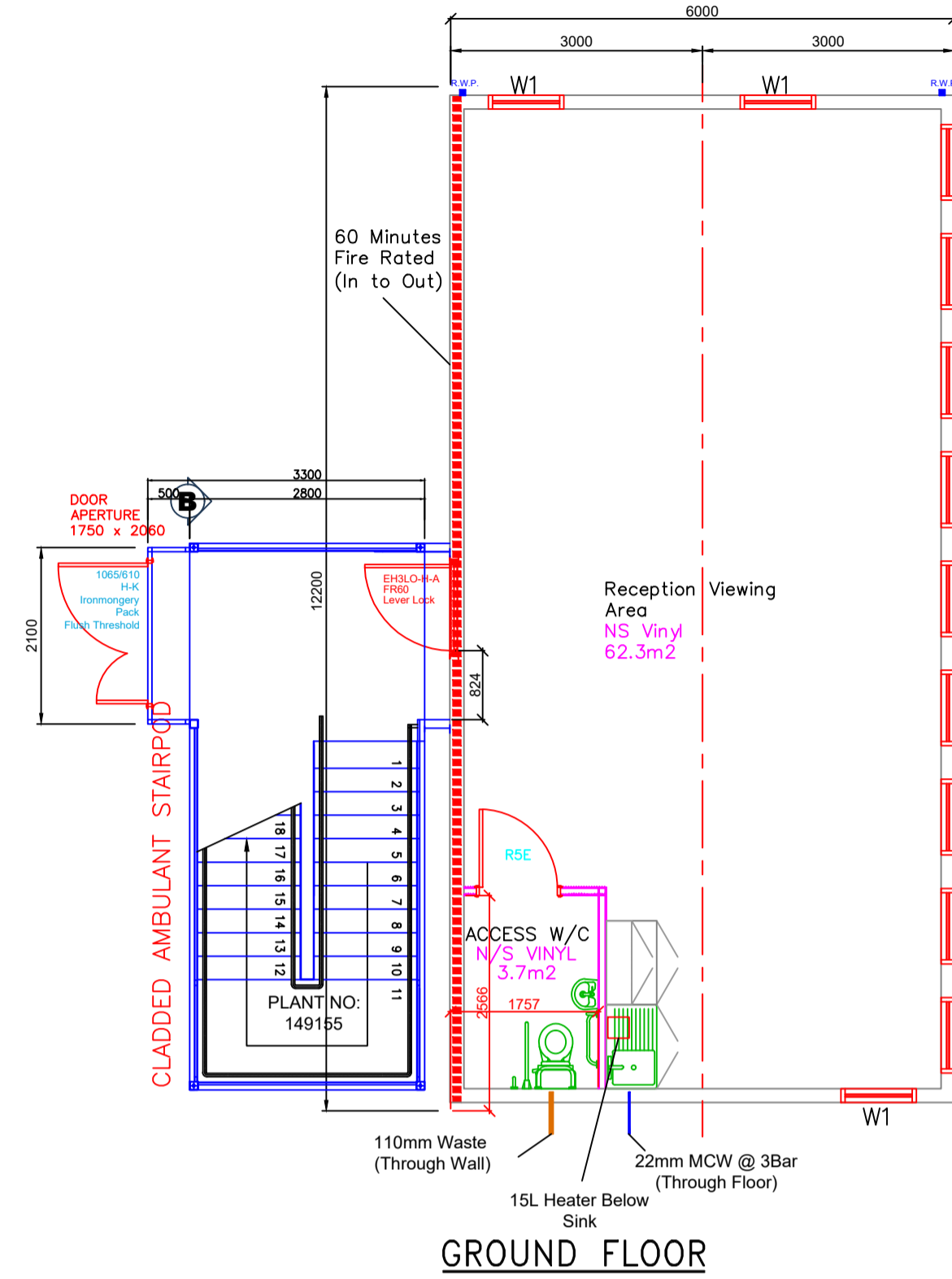
Embossed Plastic 'H' section plasterboard jointing system - Colour: White  
 Flexi external wall corners / J Sections to internal corners - Colour: White

**Fittings:**

**Kitchen Units:**  
 Sink units - Colour: **Greenwich Oak**.  
 28mm Post Formed Worktop  
 Colour: Black On chrome legs.  
 300mm Whiterock Upstand to run length of worktop.

**Window Blinds:**  
 Vertical blinds to W3 Windows - Colour: Grey  
 Roller blinds to W1 Windows - Colour: Grey

**Extras:**  
 Vermin Skirting



**NOTES:**

**PVC-U WINDOW SPECIFICATION**

**W1**  
 WHITE PVC-U DOUBLE GLAZED  
 28mm SEALED UNIT  
 FULLY OPENING TILT & TURN SASH  
 COOKER/HANDLES AND THROLE VENT  
 SIZE: 900 X 1200  
 500mm Trickle Vent  
 PLEASE NOTE: WHEN WINDOWS ARE IN TILT POSITION THEY ARE RESTRICTED TO 150mm FULLY OPENING INWARDS FOR CLEANING PURPOSES ONLY.

**W3**  
 WHITE PVC-U DOUBLE GLAZED WINDOW DOUBLE GLAZED  
 INNER - 6.8mm Clear Laminated  
 16mm Silver Spacer Bar 80% Argon Filled Cavity  
 OUTER - 6mm Clear Soft Coat Toughened  
 20mm Copper Mesh Reinforcement Squares  
 SIZE: 900 X 2200mm  
 500mm Trickle Vent

Window positions indicative, dependant on module availability at time of order. Furniture for illustration purposes only.

Rev	By	Description	Date
C7	HS	RWPs Added, Vinyl Note Amended	21/09/2021
C6	HS	Room Name Amended	18/09/2021
C5	HS	Spec Amended, Window Removed, Elevations Amended	14/09/2021
C4	HS	External Staircase Amended	10/09/2021
C3	HS	Staircases Amended Back to Cladded	09/09/2021
C2	HS	Spec Amended	27/08/2021
C1	HS	Drawing Productionised	23/08/2021
P5	HS	Staircase Amended	18/08/2021
P4	HS	Furniture Added	18/08/2021
P3	AJS	Revised To Clients Comments	16/07/2021
P2	AJS	2nd Option Added With Elevations	07/07/2021
P1	HS	Floor Plan Amended	22/06/2021
P0	AJS	First Issue	26/04/2021



**HEAD OFFICE**

PREMIER MODULAR LIMITED, CATFOSS LANE,  
 BRANDESBURTON, DRIFFIELD  
 EAST YORKSHIRE YO25 8EJ  
 Telephone: (01964) 545000 Fax: (01964) 545001  
 email: sales@premiermodular.co.uk  
 internet: www.premiermodular.co.uk

THIS DRAWING AND DESIGN IS THE SOLE PROPERTY OF WACO UK AND MUST NOT BE COPIED, LOANED OR COMMUNICATED, IN WHOLE OR PART TO ANY THIRD PARTY WITHOUT CONSENT FROM THE COMPANY.

Client	BAE Systems
Project	Govan
Title	General Arrangement Modular Accommodation

Scale (at A1)	1: 50	Drawn	AJS	Date:	26/04/2021	Checked		
Drawing No.	32909-PML-B1-XX-DR-A-0001						Rev	C7