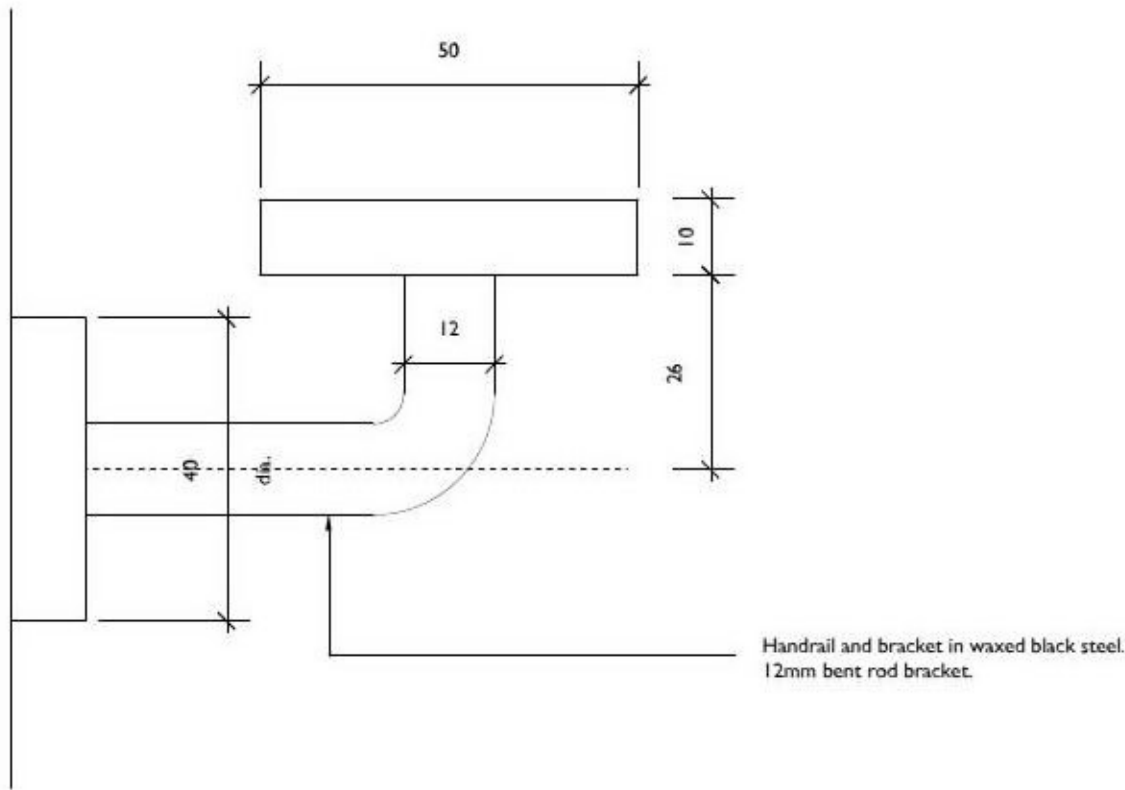
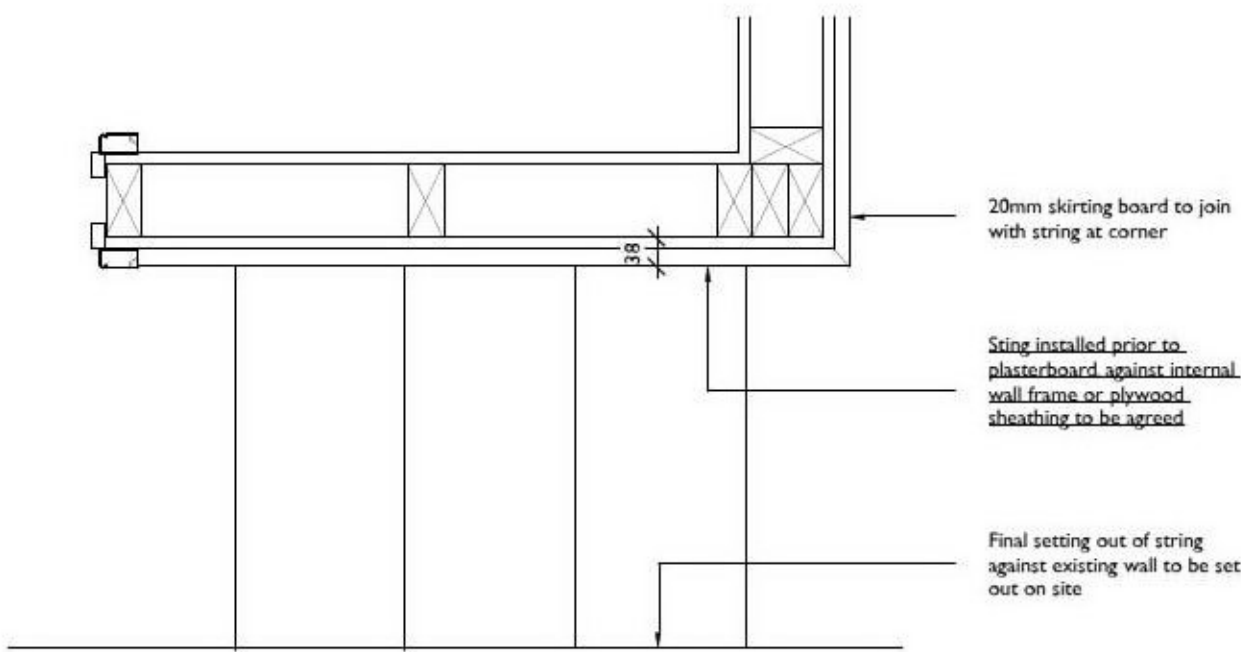


Stair Section - 1:10



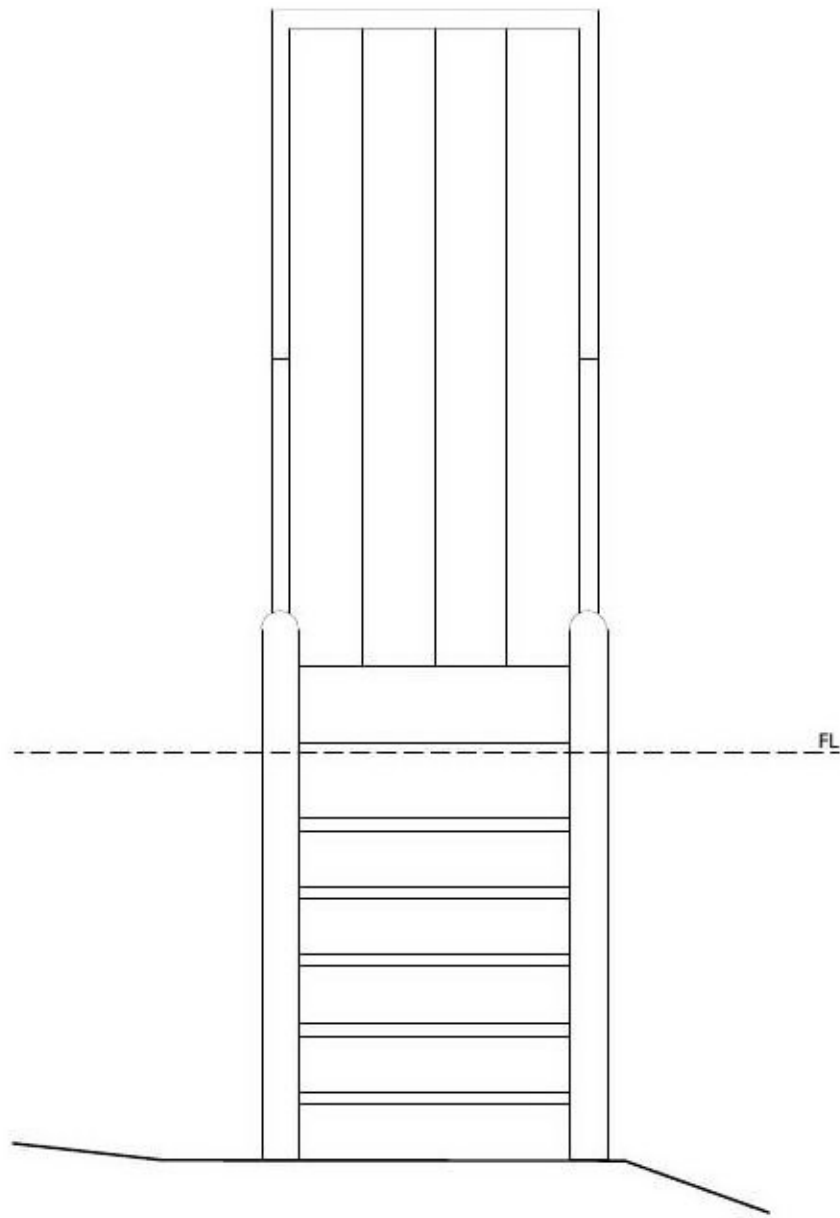
Stair Handrail Against Wall - 1:1



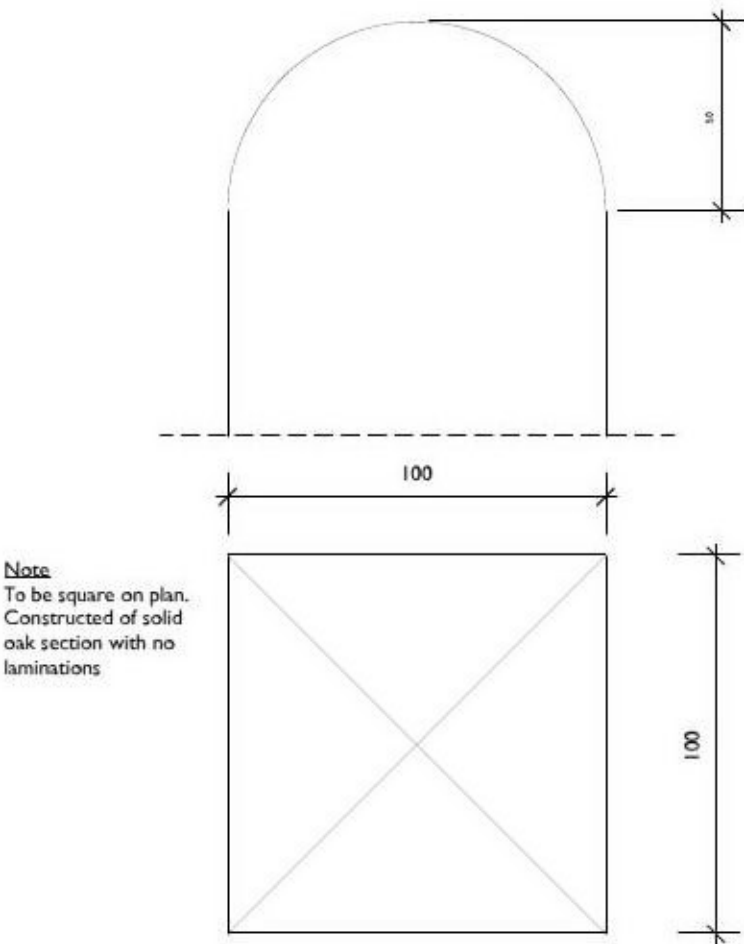
Stair Plan - 1:10

General Notes		
Floor to floor	-	692mm (TBC)
Goings	-	225mm (Painted softwood)
Rise	-	4 at 173mm (Painted softwood)
Step detail	-	25mm full half round front nosing. Back joint to joiners discretion
Newel posts	-	n/a
String	-	38 x approx 235mm (painted softwood)
Ballusters	-	n/a
Handrail	-	900mm high (50 x 10mm waxed black steel as detailed)
Underside	-	Carassing to joiners discretion
Apron base rail	-	n/a
String capping	-	n/a
Between strings	-	To suit width between walls

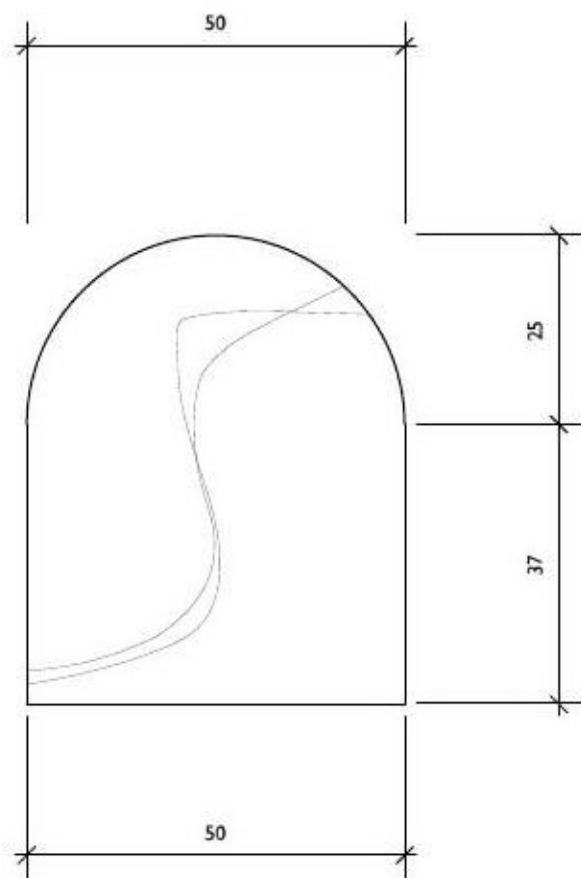
Internal Stair Details



Elevations - 1:20



Newel Post - 1:2



Handrail - 1:1

General Notes		
Floor to floor	-	1080mm (TBC?)
Goings	-	210mm* (oak)
Rise	-	6 at 180mm* (Open riser - 12mm dia. mild steel rod to restrict to 100mm max opening)
Step detail	-	32mm square edge. Back joint to joiners discretion
Newel posts	-	100 x 100 (oak)
String	-	38 x approx. 225mm (oak)
Ballusters	-	n/a
Spindles	-	20 x 20mm (max 100mm spacing centre on string at equal spacing)
Handrail	-	900mm high (oak as detailed)
Underside	-	Exposed Oak Carassing to joiners discretion
Apron base rail	-	n/a
String capping	-	n/a
Between strings	-	Aprox 775mm. Set by handrail termination on existing door surround as shown

This drawing to be read strictly in accordance with the General Joinery Notes on drawing no. 4021-1-16

ROGER BALMER  
DESIGN

FOUNTAIN HOUSE STUDIO THE STREET EAST BERGHOLT COLCHESTER CO7 6TB

Client	Project	Drawing
Mr and Mrs Ambrose	Shirburn Mill, Mill Hill, Lawford	Stair Details Sheet 3

Scale	Date	Del.	Drawing no.	Rev.
As noted at A1	September 2021	BOC	4021 - 18	

Contractors must verify all dimensions and information on site prior to commencement of work. Do not scale from drawing.  
© Roger A Balmer Ltd