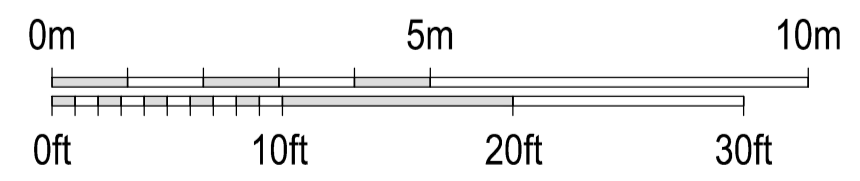
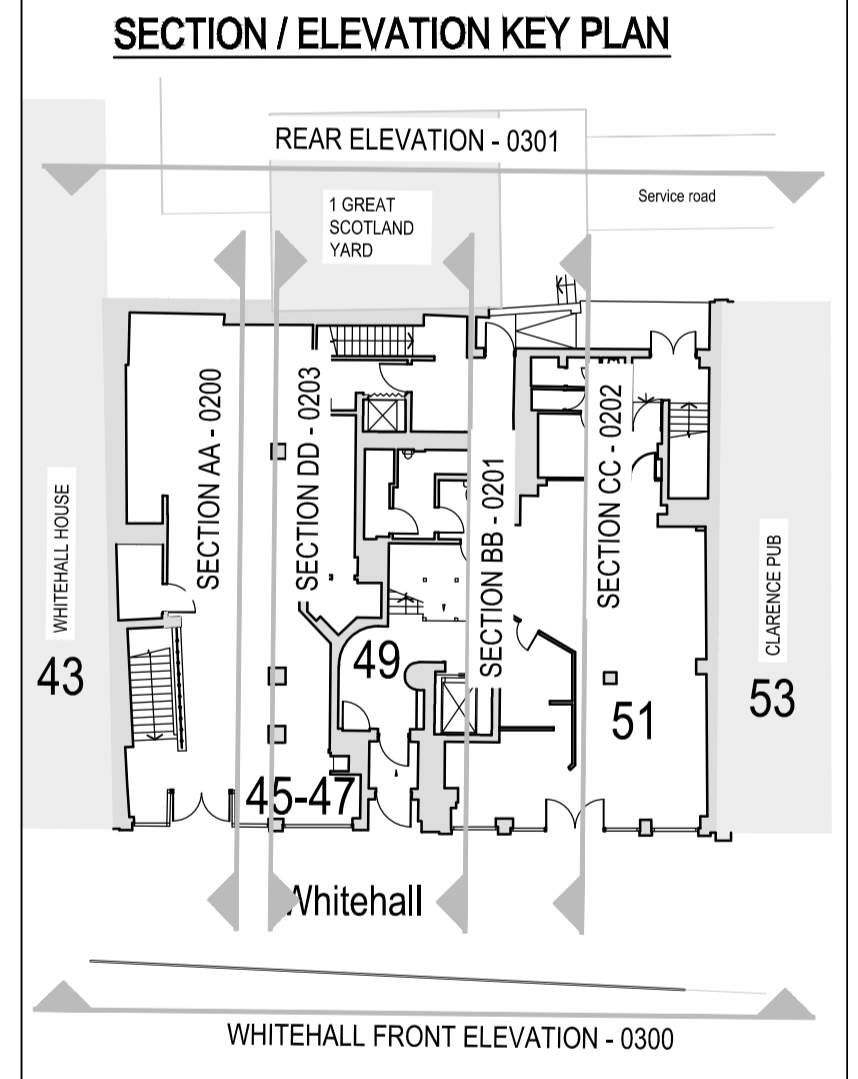




Estimated outline of 55 Whitehall (Department of International Trade)

Do not scale from this drawing, except for town planning purposes.
 Work to figured dimensions only.
 This drawing is the property of Brimelow McSweeney Architects and copyright is reserved by them.
 This drawing is issued on condition that it is not copied, used or disclosed by or to any unauthorised person without the prior written consent of Brimelow McSweeney Architects.
 The areas on the drawing have been measured directly from a CAD drawing and have no tolerances added or subtracted.
 The areas have been calculated in accordance with the Code of Measuring Practice, 6th Edition (2007) using the stated options NIA, GIA, GEA. They are approximate and relate to the likely areas of the building at the current state of the design. Any decisions to be made on the basis of these predictions, whether as to project viability, pre-letting, lease agreements and the like, should make allowance for the following:
 - Design development
 - Accurate site survey, site levels and dimensions need to be fully evaluated
 - Allowance for construction methods and building tolerances.
 - Local authority consents

rev	date	drawn by	chkd	description
/	26.03.18	GC	SMD	First Issue
A	10.05.18	GC	SMD	Issued for Planning
B	21.03.19	AW	SMD	Issued for Information
C	14.09.21	SMD	SMD	Issued for Planning



status **FOR PLANNING**

BRIMELOW McSWEENEY ARCHITECTS
 26 Great Queen Street, Covent Garden, London WC2B 5BL
 tel: 020 7831 7835 - email: admin@bm-architects.co.uk



project
 45-51 Whitehall
 London SW1A 2BX

title
 Existing Whitehall Elevation

scale	date	drawn
1:100@A1	19-03-18	GC
1:200@A3		

drawing no. **1743-0300** revision **C**