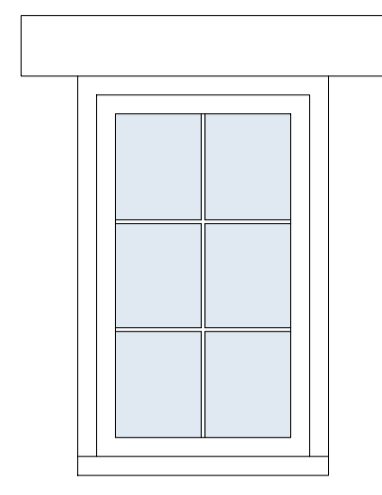
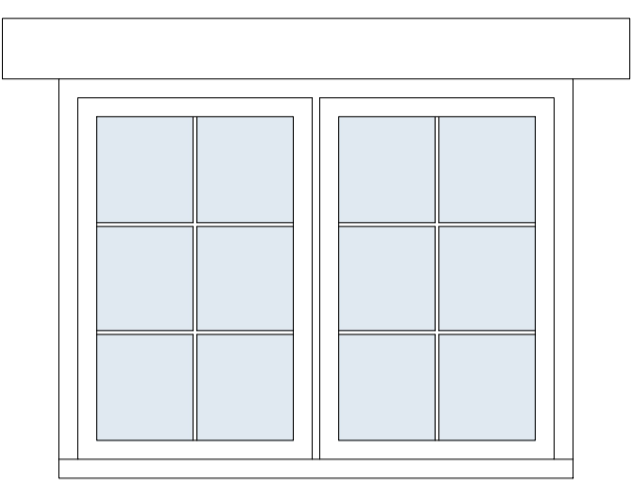


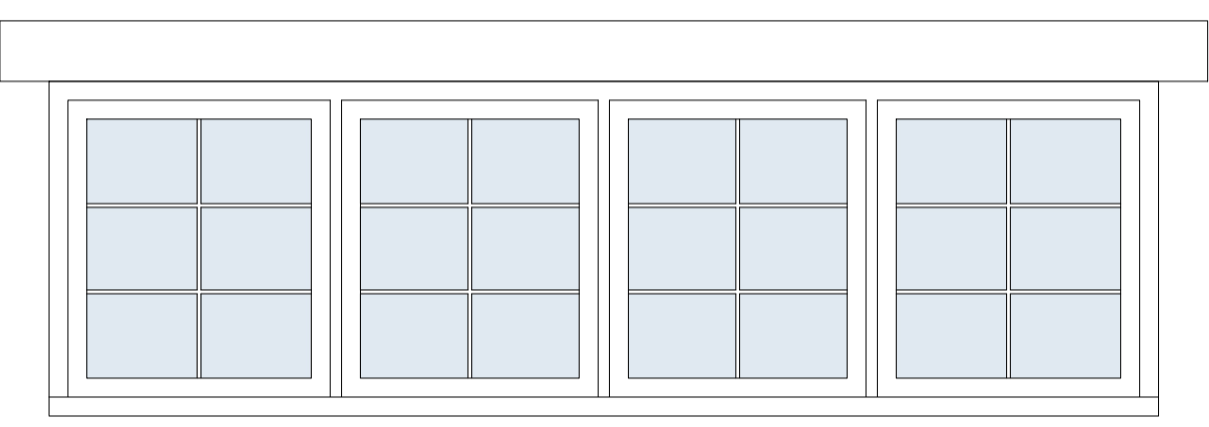
- NOTES:
- 1) New hardwood window frames
 - 2) All glazing clips, gaskets and weather seals and window furniture omitted for clarity.
 - 3) Slim double glazed sealed unit to consist of 4mm glass / 6mm cavity / 4mm glass with warm edge spacer.
 - 4) Safety glass to be used in any critical locations in accordance with A.D Part K.
 - 5) Window furniture to consist of a satin chrome finish.
 - 6) All opening sizes TBC prior to window production review.
 - 7) For details of window positions, please refer to drawing '1525 - 04'.
 - 8) Drawing produced for planning purposes only.



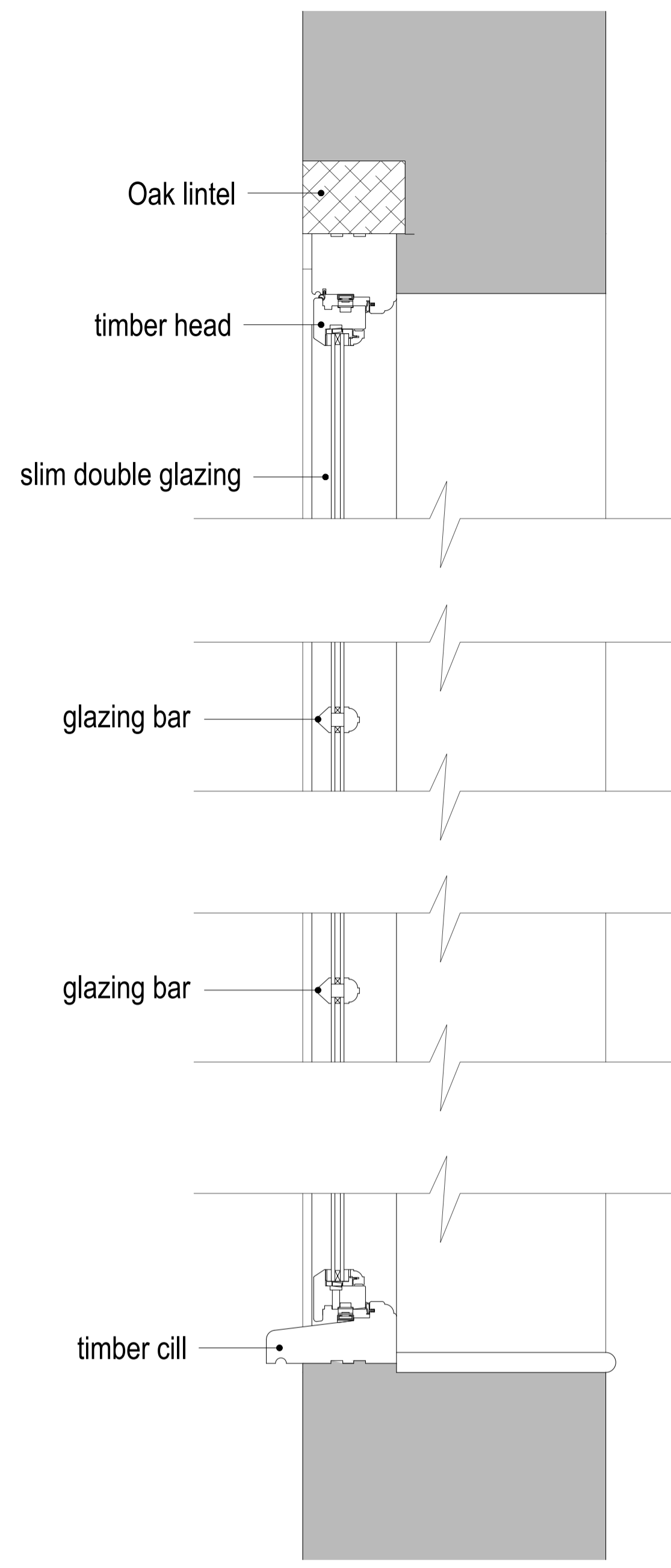
Window Type 1 (Scale 1:20 @ A1):
(D3 & D10).



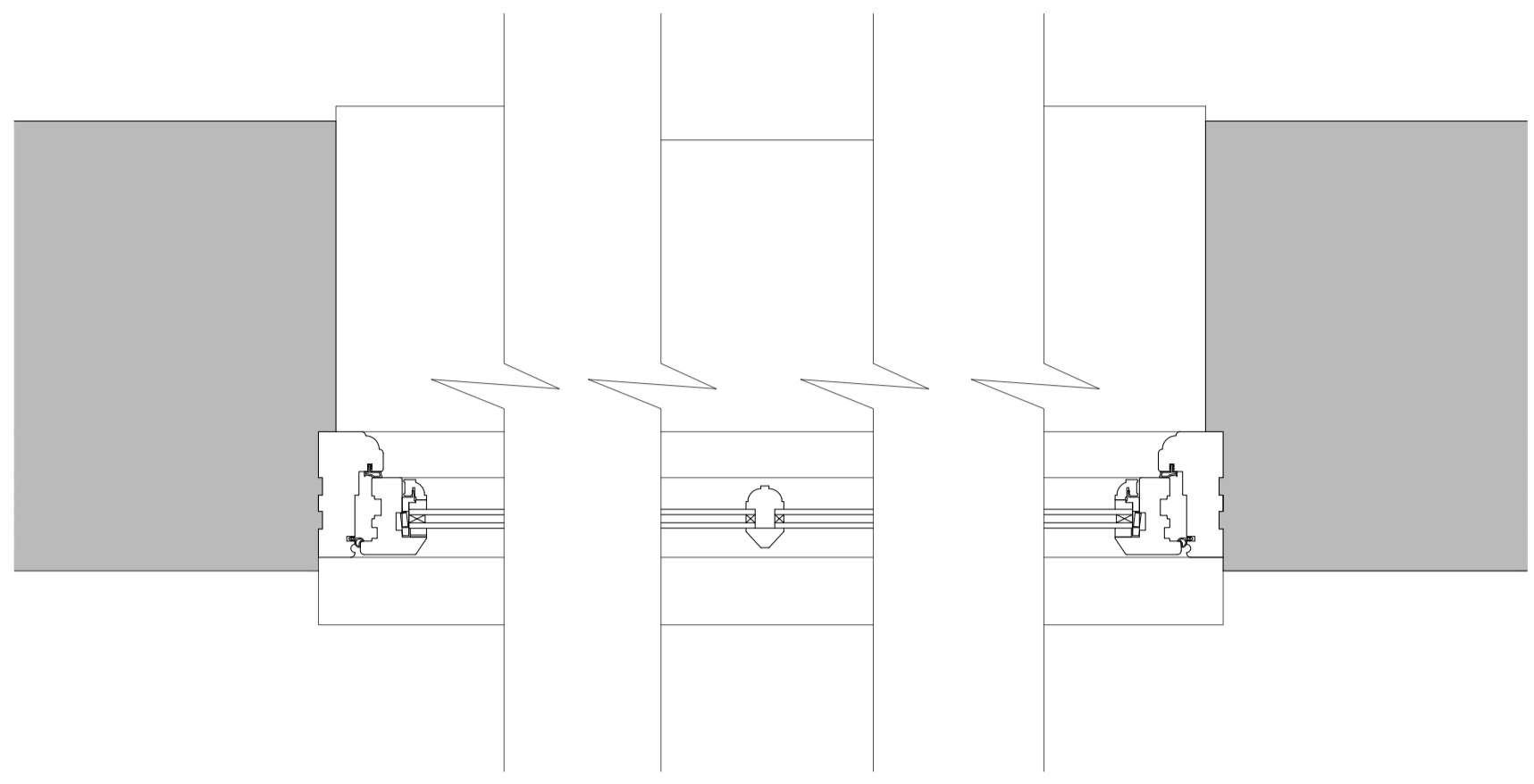
Window Type 2 (Scale 1:20 @ A1):
(D4, D5, D6, D7 & D8).



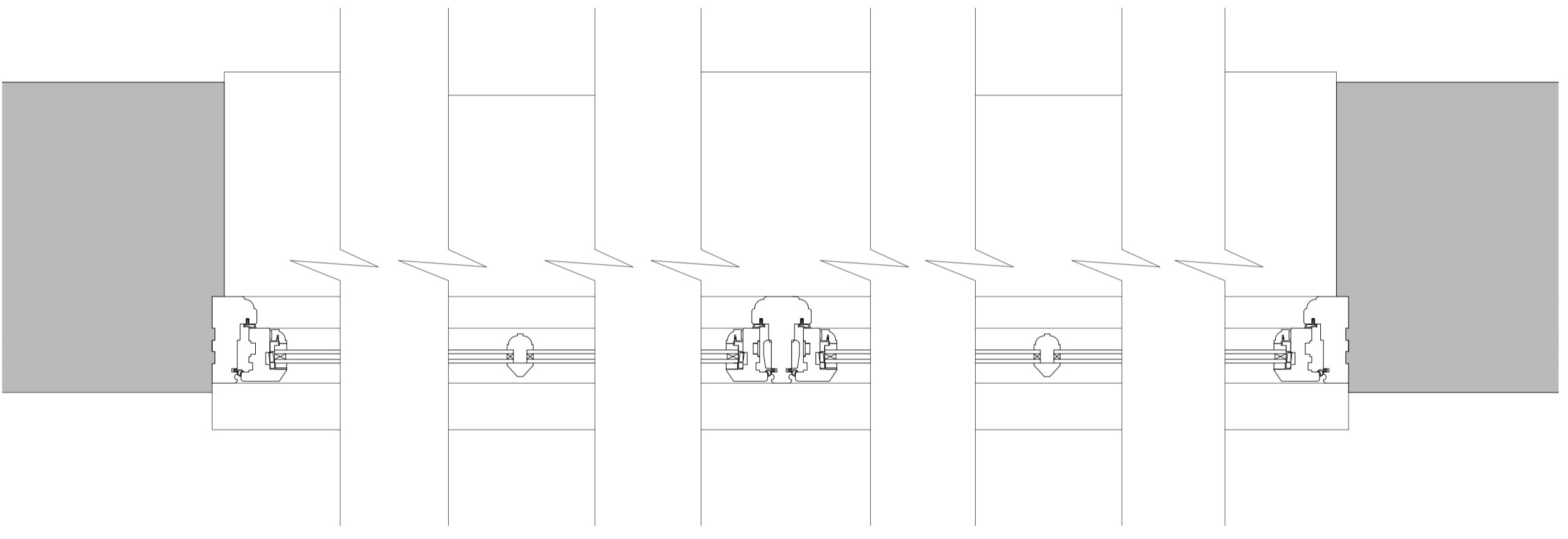
Window Type 3 (Scale 1:20 @ A1):
(D9 & D11).



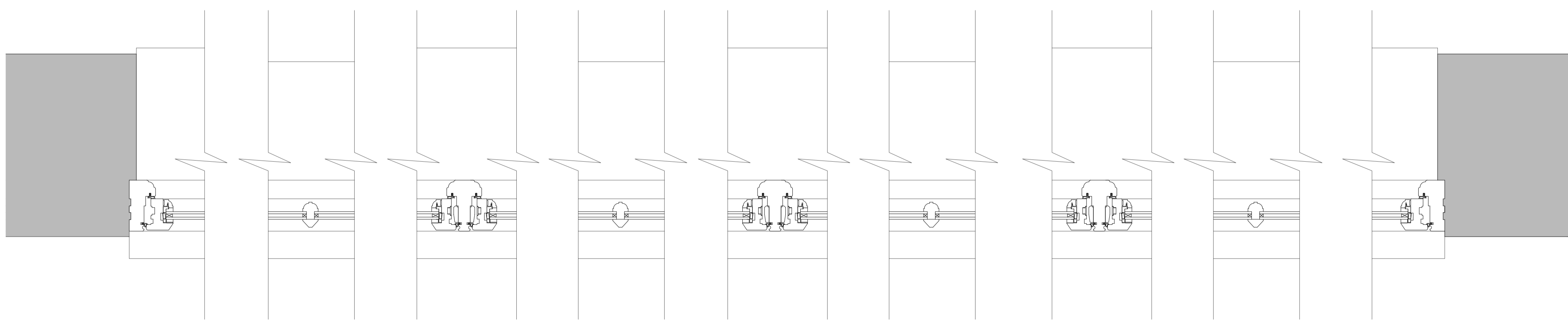
WINDOW TYPE 1, 2 & 3 DETAILS (SECTION)
(Scale 1:5 @ A1)



WINDOW TYPE 1 DETAILS (PLAN)
(Scale 1:5 @ A1)



WINDOW TYPE 2 DETAILS (PLAN)
(Scale 1:5 @ A1)



WINDOW TYPE 3 DETAILS (PLAN)
(Scale 1:5 @ A1)



VISUAL SCALE 1:5



VISUAL SCALE 1:20

<p>PLANNING</p> <p>Comments/Revision Notes: N/A</p>	<p>Job No. 1525</p>	<p>8 High Street, Collyweston, Stamford, PE9 3PW</p>
	<p>Drawing No. 05</p>	<p>Proposed Window Details</p> <p>RTK Stamford Ltd.</p> <p>01780 482483 No.20 - PE9 2ZF www.rtkstam.com</p>
	<p>Revision -</p>	
	<p>Scale 1:5/20 @ A1</p>	<p>Issue Date 07.10.2021</p>

Drawing to be scaled for planning purposes only. All dimensions to be verified on site. All drawings are the copyright of RTK Stamford Ltd.

