

- MATERIALS
01. Karma White Handmade laid in traditional 'English Bond' pattern and matching mortar. Kalei finish to be brushed applied to entire brick surface

02. Roofline stainless steel standing seam roof in 'Classic' finish

03. Roofline stainless steel rainwater guttering and downpipes in 'Classic' finish

04. Solid European oak entrance door with concealed hinges

05. Thermally broken aluminium windows with white powder coat finish

06. Thermally broken rooflights with natural SS finish to match roof finish

07. Insitu concrete lintel and sill

08. Mild steel vision screen with white powder coat finish

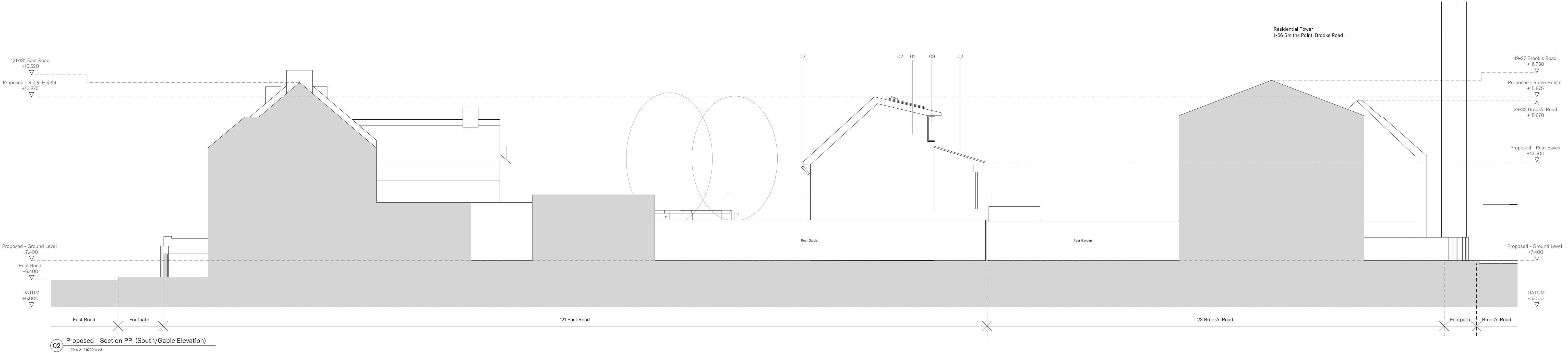
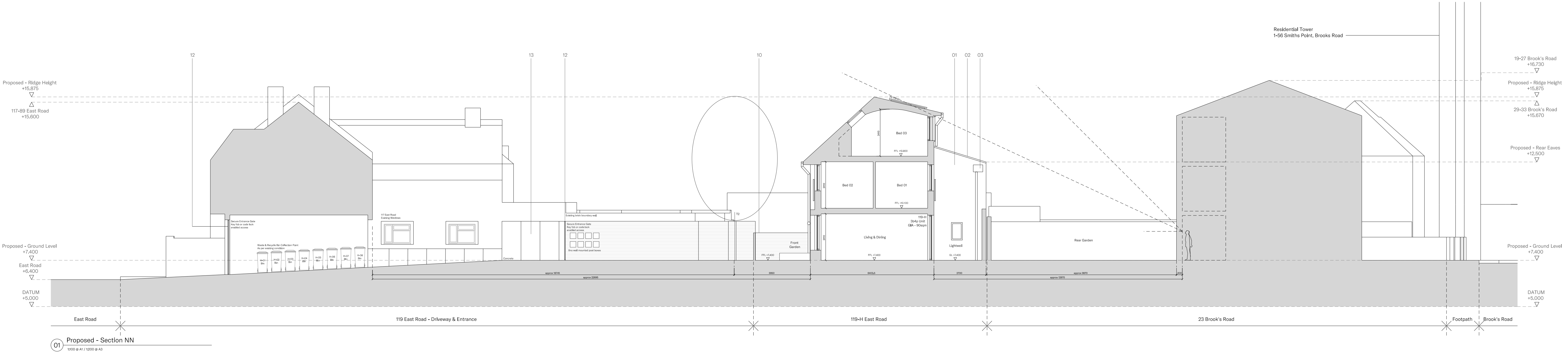
09. Timber screen with external grade paint finish

10. Timber fence with external grade paint finish

11. Timber clad external storage unit with external grade paint finish and sedum roof - refer to drawing 'P-500' for further details

12. Mild steel gates with zinc plated (clear passivated) finish

13. Mild steel boundary edging with zinc plated (clear passivated) finish



Revisions

Rev.	Description	Drawn	Date
P1	Planning	MD	10.09.21

Notes

© Thomas-McBrien

The drawings are for information purposes only. Do not scale from drawings. All dimensions to be checked onsite - errors to be reported immediately to the Architect. To be read in junction with all relevant Architects', Structural & Services Engineers' drawings and specifications. Copyright of Thomas-McBrien Ltd. All rights reserved. No implied license exists. The drawings may not be reproduced, edited or copied without written consent Thomas-McBrien Limited.



Key



Thomas-McBrien  
Architects

RFSK  
2 Butcher Row  
London E14 8DS  
  
020 3633 5035  
mail.thomas-mcbrien.com  
thomas-mcbrien.com

Project	Best Court, 119 East Road, London, E15 3QS	Project No.
Client	Tulip Properties & Real Estate Ltd	2002
Date	August 2021	Drawing No.
Scale	1:100 @ A1 / 1:200 @ A3	P-216
Drawing Title	Proposed - Section NN & PP	Rev No.
Drawn	MD	P1
Checked	BMB	